

Need a Mortgage in principle  
to make offers? Call us now  
for quick assistance!  
**0121 775 0101**



Do you need to sell?  
Start your journey now!  
Call us we can help.  
**01564 777 314**



**SCAN FOR MORE INFO**  
**SIZE** - 1539 Sq Ft  
**TENURE** - Freehold  
**COUNCIL TAX** - Solihull Metropolitan Borough Council D  
**BROADBAND** - Upload Max 8 Mbps  
Download Max 40 Mbps  
**MOBILE** - EE Three O2 Vodafone  
**EPC** - D  
**PARKING** - Driveway Parking  
**FLOODRISK** - No Risk  
**SERVICES** - Heating is Calor Gas &  
Sewerage is via a Septic Tank.  
**COVENANTS** - N/A  
Are you an investor  
interested in expanding your  
portfolio?

## Top Lock View, Knowle

Offers Over £700,000

Rare opportunity to purchase this fantastic three-bedroom dormer property set on Knowle Locks just off Kenilworth Road. With 360-degree views, a beautiful private wooded area, and three double bedrooms, this home is within walking distance of Knowle High Street and is not to be missed!

### FEATURES

- Three Bedroom Detached Dormer Property
- Extended Lounge
- Dining Room
- Kitchen and Utility
- 360 Degree Field Views
- Circa 0.40 plot
- Set on the Knowle Locks
- Walking Distance to Knowle High Street



SCAN TO **VIEW OUR**  
**WEEKLY FILMS &**  
**SUBSCRIBE**



### Sneak Peeks

Every week, we unveil "Sneak Peeks," a feature showcasing exclusive properties before they hit Rightmove and other platforms.



### The Landlord Club

Join our Landlord Club for weekly updates on legislation, market trends, and our Letting Director's 'Investment Pick of the Week' for optimal ROI.



### HTSPMD

Tune into 'How's The Solihull Property Market Dom' weekly for a quick, insightful snapshot of the market.



### The Mortgage Update

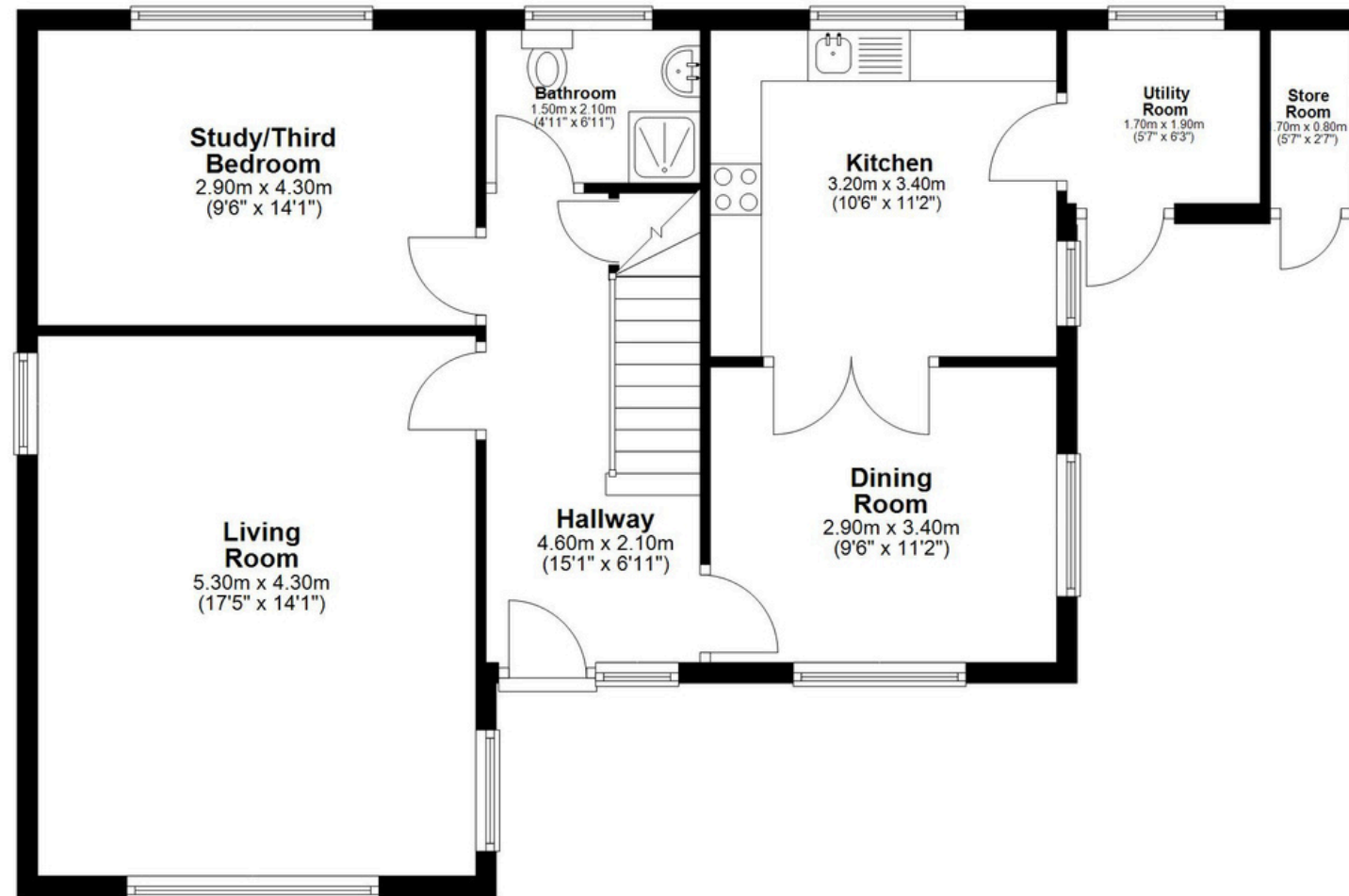
Get weekly insights and the best deals with our Mortgage Update, your shortcut to navigating the complex mortgage landscape confidently.

**Call 01564 777 314 to provide your investment criteria for alerts.**



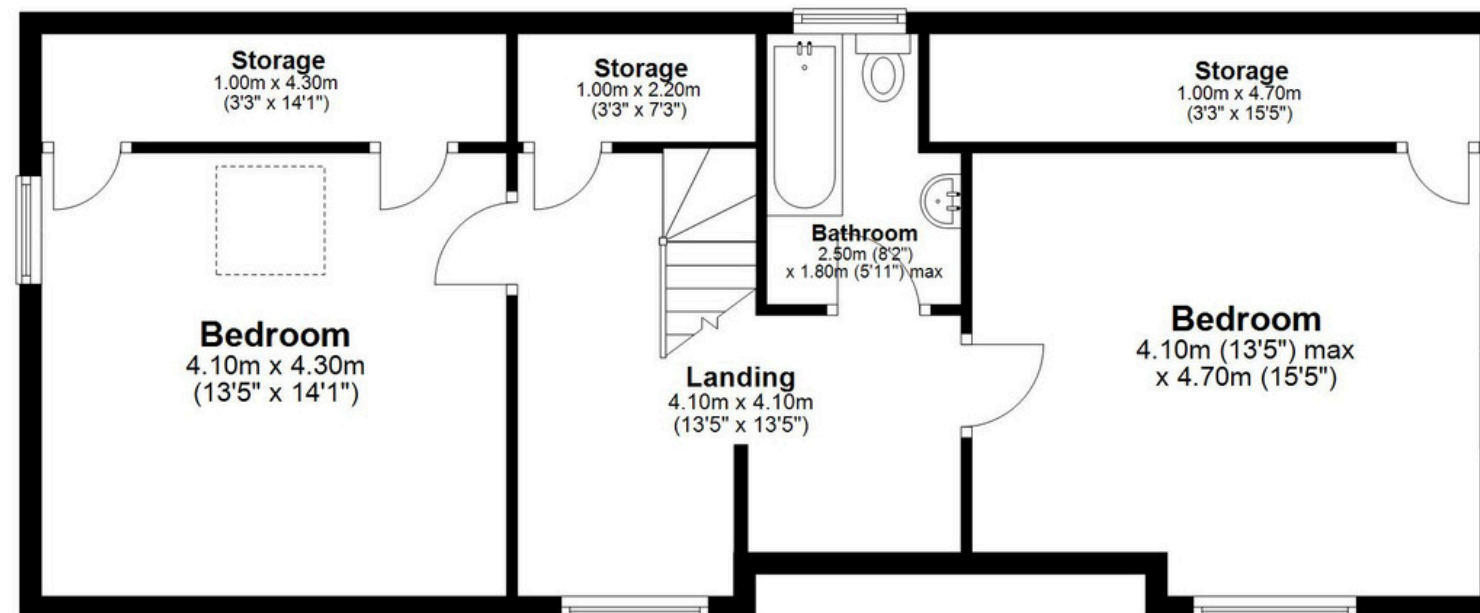
## Ground Floor

Approx. 75.9 sq. metres (817.5 sq. feet)



## First Floor

Approx. 67.1 sq. metres (722.3 sq. feet)



Total area: approx. 143.0 sq. metres (1539.8 sq. feet)

**Top Lock View, Kenilworth Road, Knowle**