

**Need a Mortgage in principle to make offers?** Call us now for quick assistance!  
**0121 775 0101**



**Do you need to sell? Start your journey now!** Call us we can help.  
**0121 775 0101**



**SCAN FOR MORE INFO**  
**SIZE** - 1190 Sq Ft  
**TENURE** - Freehold  
**COUNCIL TAX** - Solihull MBC - C  
**BROADBAND** - Upload Max 1000Mbps  
Download Max 1800Mbps  
**MOBILE** - EE Three O2  
**EPC** - D - 63  
**PARKING** - For at least 2 Cars  
**FLOODRISK** - Very Low  
**SERVICES** - Mains  
**COVENANTS** - N/A

## CASTLE LANE

Solihull, B92

This semi-detached house presents an excellent opportunity for families seeking a well-maintained and spacious home. Immaculately maintained, the family home not only offers comfortable living but also presents further potential for extension, subject to planning permission. With its desirable location and thoughtful layout, this property is sure to appeal to those looking for a perfect family home in Solihull.

### FEATURES

- Well Maintained Semi-Detached Family Home
- Potential to Further Extend (STPP)
- Lounge with Deep Bay Window
- Dining Room with Door to Garden
- Extended Fitted Kitchen
- Principal Bedroom with Fitted Wardrobes
- Double Bedroom Two with Fitted Wardrobes and Third Single Bedroom
- Family Bathroom
- Private Rear Garden and Driveway Parking
- Walking Distance to Olton Train Station

**Are you an investor interested in expanding your portfolio?**

**Call 0121 775 0101 to provide your investment criteria for alerts.**



### Sneak Peeks

Every week, we unveil "Sneak Peeks," a feature showcasing exclusive properties before they hit Rightmove and other platforms.

### The Landlord Club

Join our Landlord Club for weekly updates on legislation, market trends, and our Letting Director's 'Investment Pick of the Week' for optimal ROI.

### HTSPMD

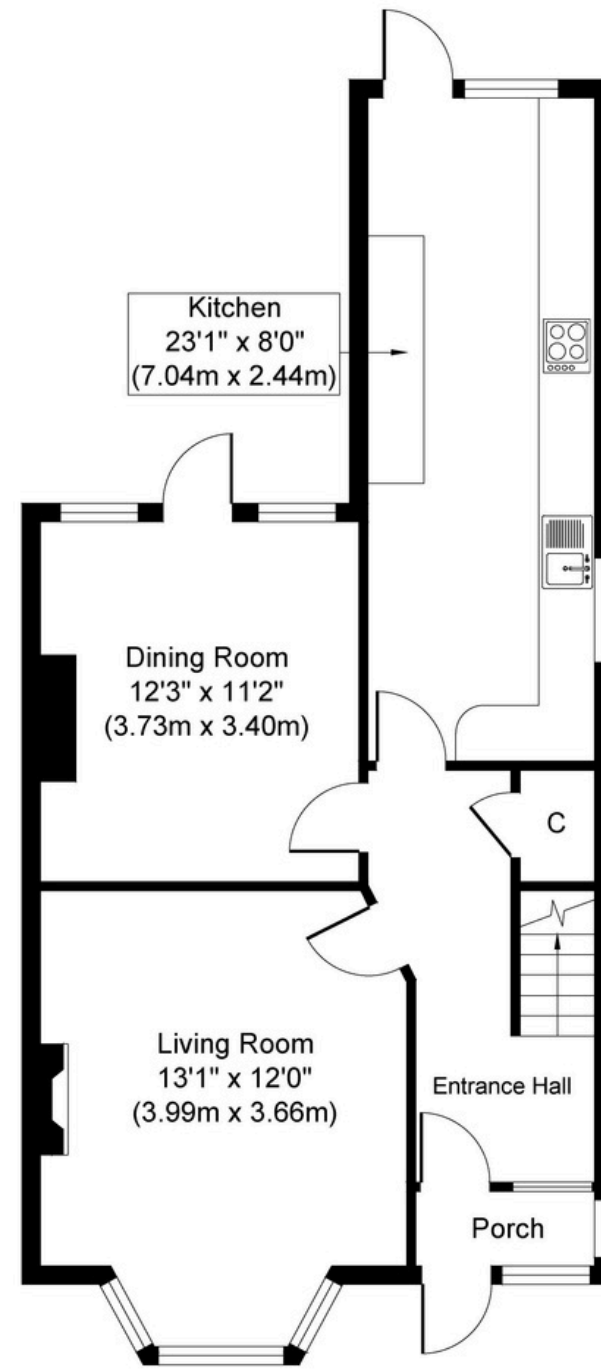
Tune into 'How's The Solihull Property Market Dom' weekly for a quick, insightful snapshot of the market.

### The Mortgage Update

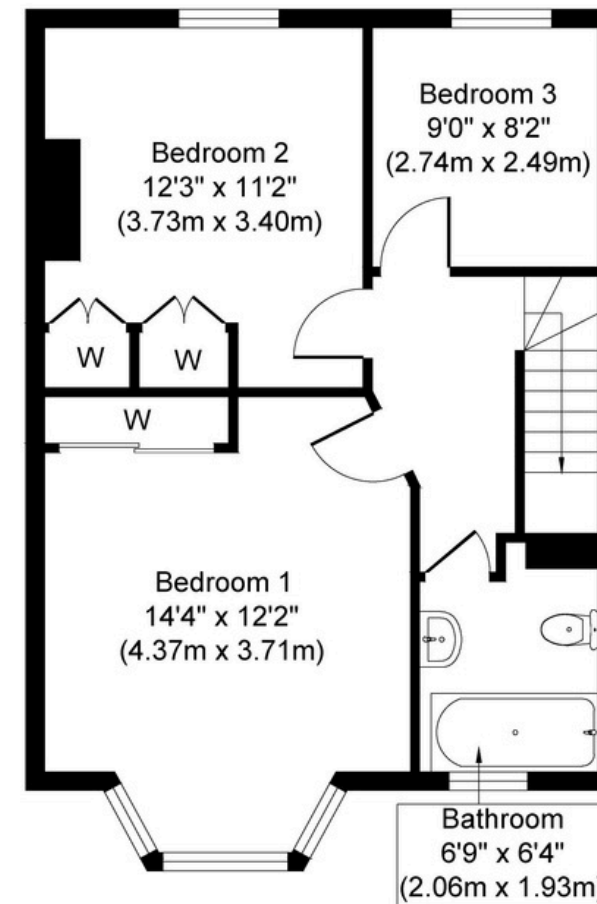
Get weekly insights and the best deals with our Mortgage Update, your shortcut to navigating the complex mortgage landscape confidently.

SCAN TO VIEW OUR WEEKLY FILMS & SUBSCRIBE





**Ground Floor**  
**Approximate Floor Area**  
**655 sq. ft**  
**(60.84 sq. m)**



**First Floor**  
**Approximate Floor Area**  
**535 sq. ft**  
**(49.67 sq. m)**

Whilst every attempt has been made to ensure the accuracy of the floor plan contained here, measurements of doors, windows, rooms and any other items are approximate and no responsibility is taken for any error, omission, or mis-statement. The measurements should not be relied upon for valuation, transaction and/or funding purposes. This plan is for illustrative purposes only and should be used as such by any prospective purchaser or tenant.

The services, systems and appliances shown have not been tested and no guarantee as to their operability or efficiency can be given.