

Need a Mortgage in principle
to make offers? Call us now
for quick assistance!
0121 775 0101



Do you need to sell?
Start your journey now!
Call us we can help.
0121 775 0101



SCAN FOR MORE INFO
SIZE - 1004 Sq Ft
TENURE - Freehold
COUNCIL TAX - Solihull Metropolitan Borough Council - C
BROADBAND - Upload Max 220Mbps
Download Max 1800Mbps
MOBILE - O2 Vodafone
EPC - E - 45
PARKING - For at least 2 Cars
FLOODRISK - Very Low
SERVICES - Mains
COVENANTS - N/A

Are you an investor
interested in expanding your
portfolio?

**Call 0121 775 0101 to provide your
investment criteria for alerts.**

ASHBROOK CRESCENT

Hillfield, B91

This beautifully presented mid-terraced family home offers a perfect blend of comfort and modern living. Built in 1994, this property spans an impressive 1,004 square feet and is ideally situated within the sought-after Tudor Grange school catchment area, making it an excellent choice for families.

FEATURES

- Beautifully Presented Mid Terraced Property
- Modern Kitchen with Integrated Appliances
- Bright Lounge
- Sun Room/Dining Room
- Two Good Sized First Floor Bedrooms
- Luxury Family Shower Room
- Principal Bedroom on the Second Floor with En-Suite Shower Room
- Low Maintenance and Private Rear Garden
- Driveway Parking for Two Vehicles
- Tudor Grange Academy Catchment



SCAN TO **VIEW OUR
WEEKLY FILMS &
SUBSCRIBE**

Sneak Peeks

Every week, we unveil "Sneak Peeks," a feature showcasing exclusive properties before they hit Rightmove and other platforms.

The Landlord Club

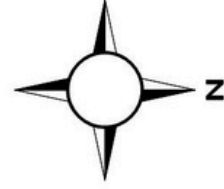
Join our Landlord Club for weekly updates on legislation, market trends, and our Letting Director's 'Investment Pick of the Week' for optimal ROI.

HTSPMD

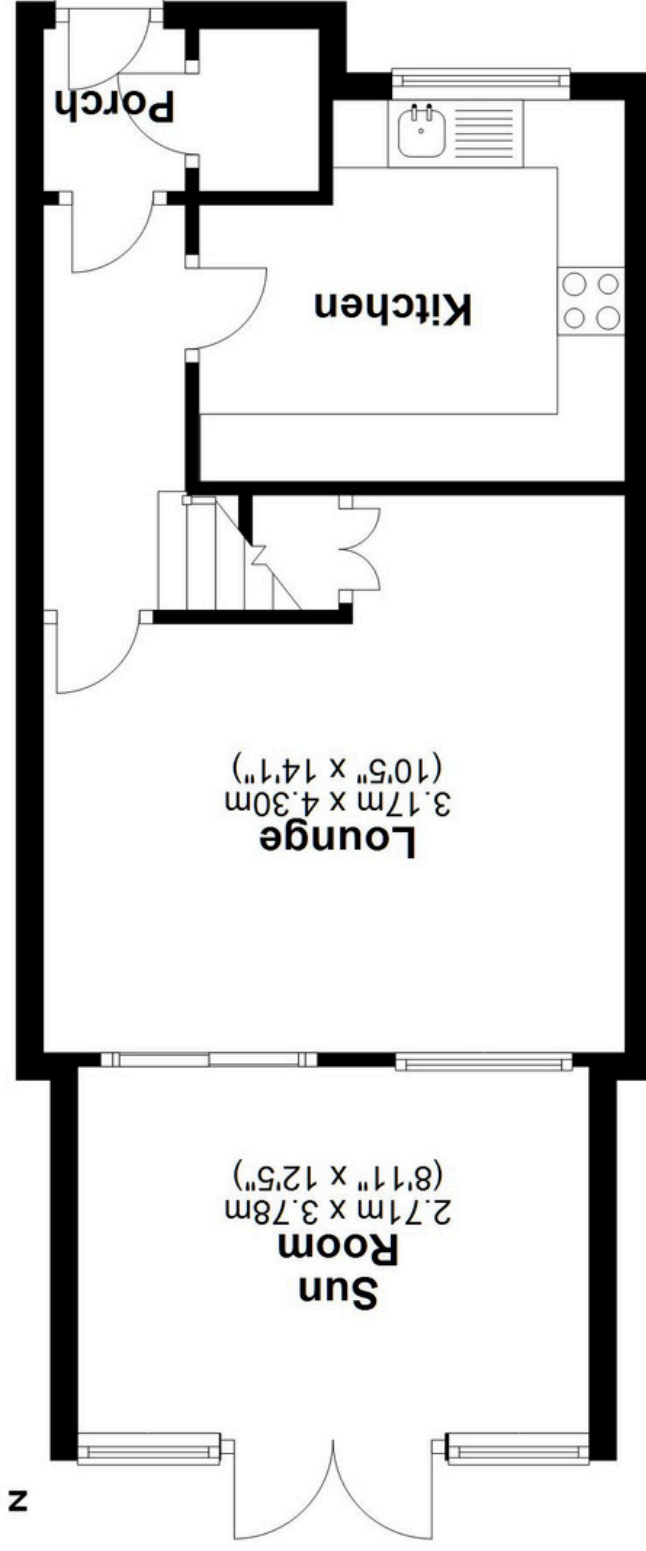
Tune into 'How's The Solihull Property Market Dom' weekly for a quick, insightful snapshot of the market.

The Mortgage Update

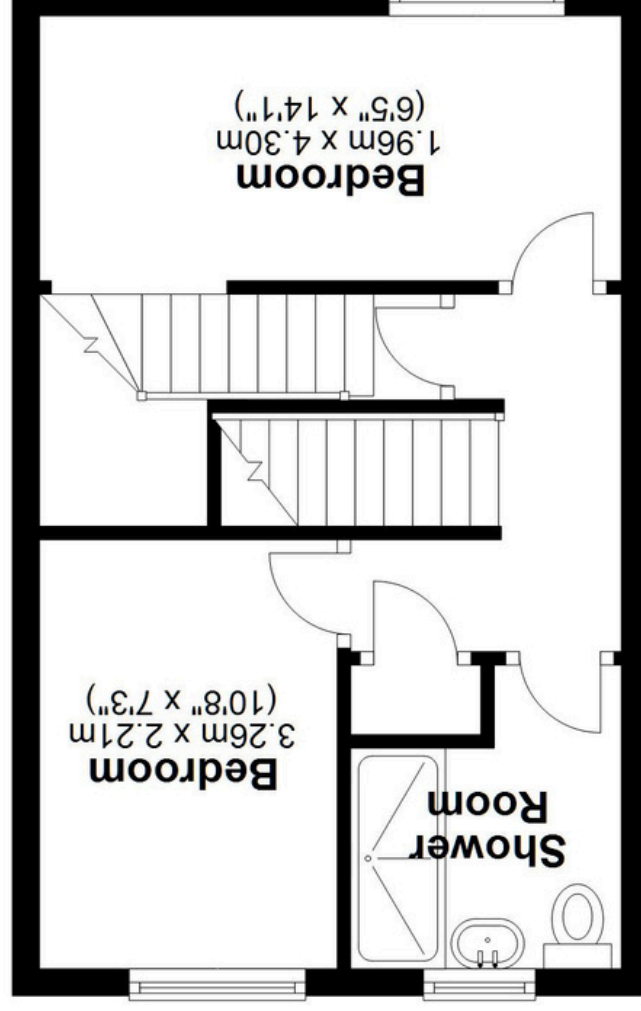
Get weekly insights and the best deals with our Mortgage Update, your shortcut to navigating the complex mortgage landscape confidently.



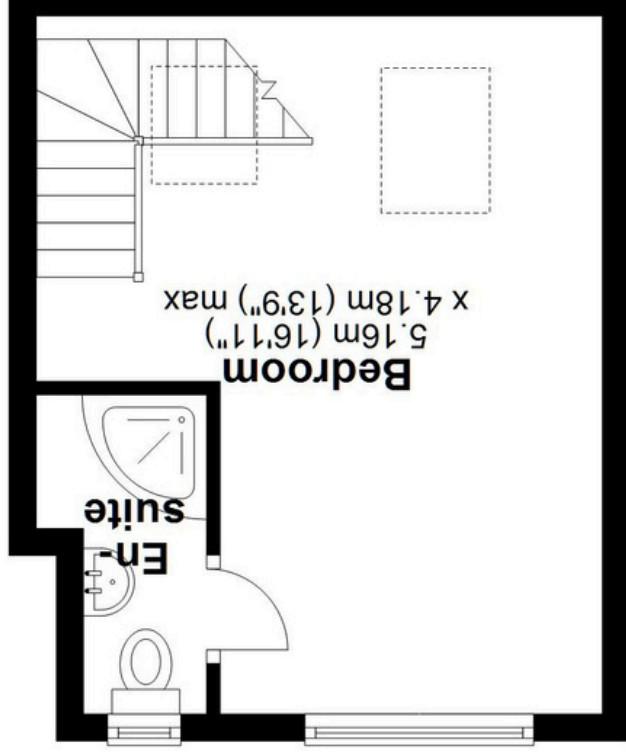
Ground Floor
Approx. 42.0 sq. metres (451.7 sq. feet)



First Floor
Approx. 30.3 sq. metres (325.9 sq. feet)



Second Floor
Approx. 21.1 sq. metres (227.1 sq. feet)



Total area: approx. 93.3 sq. metres (1004.7 sq. feet)

This floor plan is for illustration purposes only, this is not intended to be a measured/scaled survey or comply with RICS guidelines. All measurements (including total floor area) openings, orientation and floor area are approximate. No details are guaranteed, they cannot be relied upon for any purpose and do not form part of any agreement. A party must rely upon its own inspection(s). No responsibility is taken for any error, omission, or mis-statement.
Plan produced using PlanUp.