

Need a Mortgage in principle
to make offers? Call us now
for quick assistance!
0121 775 0101



Do you need to sell?
Start your journey now!
Call us we can help.
0121 775 0101



SCAN FOR MORE INFO
SIZE - 1383 Sq Ft
TENURE - Freehold
COUNCIL TAX - Solihull MBC - D
BROADBAND - Upload Max 1000Mbps
Download Max 1800Mbps
MOBILE - O2 Vodafone
EPC - C - 74
PARKING - For at least 2 Cars
FLOODRISK - Very Low
SERVICES - Mains
COVENANTS - N/A

Are you an investor
interested in expanding your
portfolio?

**Call 0121 775 0101 to provide your
investment criteria for alerts.**

MIDDLEWOOD CLOSE

Solihull, B91

This well presented three-bedroom mid terrace house is located in a popular area and is within walking distance to Solihull Town Centre. The property offers spacious family accommodation and is truly ideal for comfortable living.

FEATURES

- Well Presented Three Bedroom Mid Terraced Property
- Quiet Cul-de-Sac Location
- Downstairs W.C.
- Second Floor Lounge
- Principal Bedroom with En-Suite
- Jack & Jill Shower Room
- Neat Rear Garden
- Single Integral Garage
- Driveway Parking
- Close to Solihull Town Centre



SCAN TO **VIEW OUR**
WEEKLY FILMS &
SUBSCRIBE

Sneak Peeks

Every week, we unveil "Sneak Peeks," a feature showcasing exclusive properties before they hit Rightmove and other platforms.

The Landlord Club

Join our Landlord Club for weekly updates on legislation, market trends, and our Letting Director's 'Investment Pick of the Week' for optimal ROI.

HTSPMD

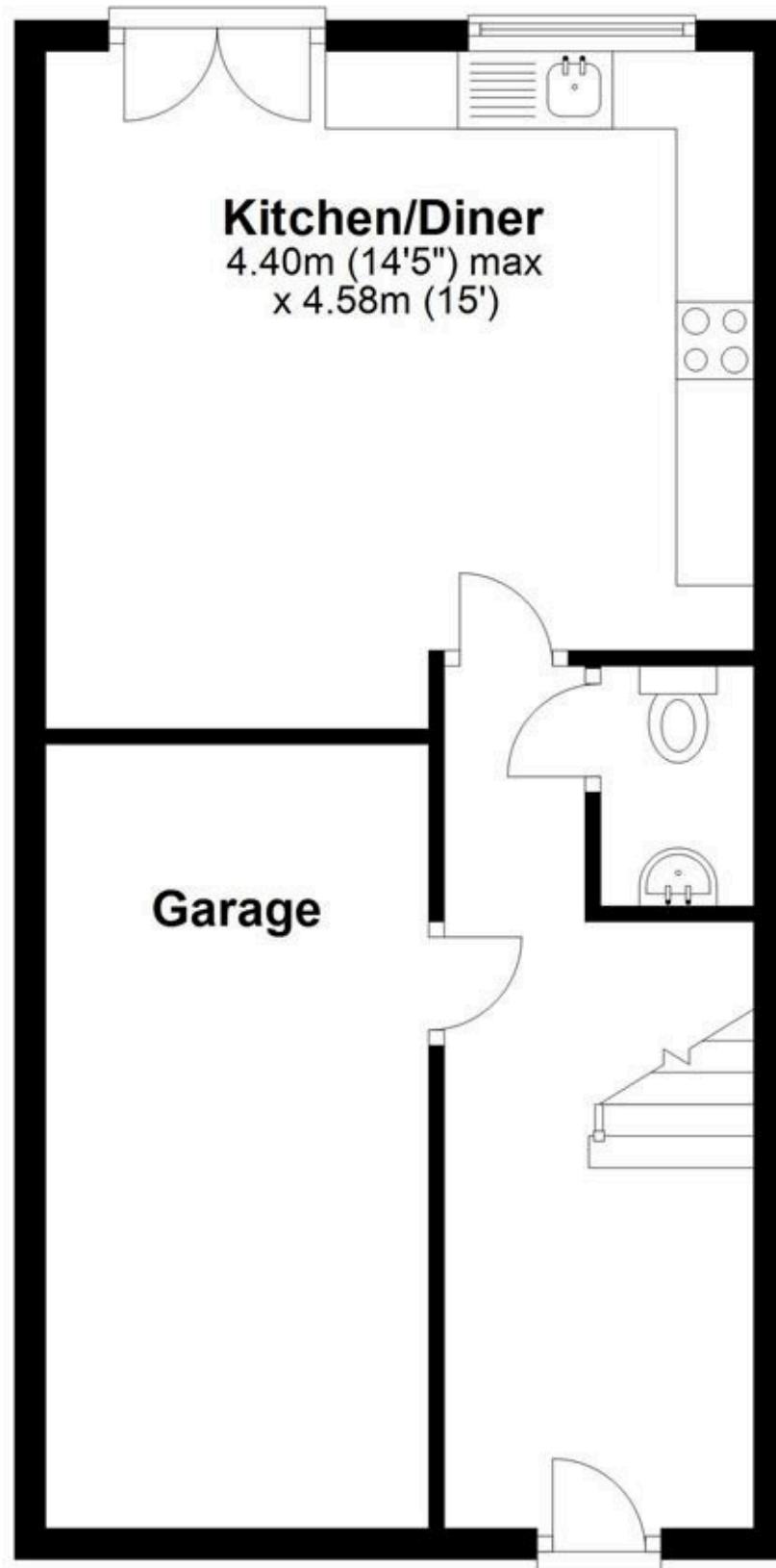
Tune into 'How's The Solihull Property Market Dom' weekly for a quick, insightful snapshot of the market.

The Mortgage Update

Get weekly insights and the best deals with our Mortgage Update, your shortcut to navigating the complex mortgage landscape confidently.

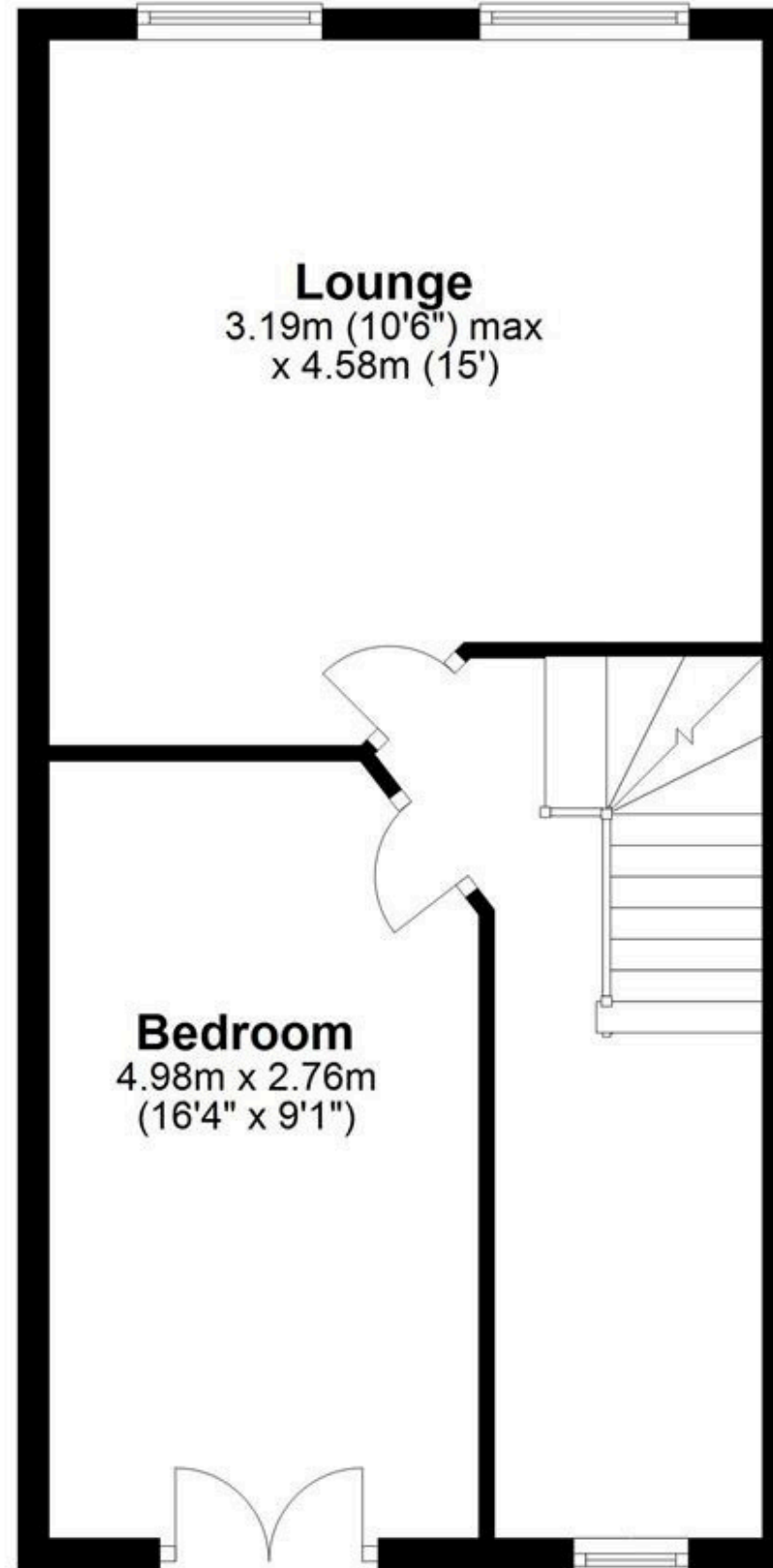
Ground Floor

Approx. 43.7 sq. metres (469.9 sq. feet)



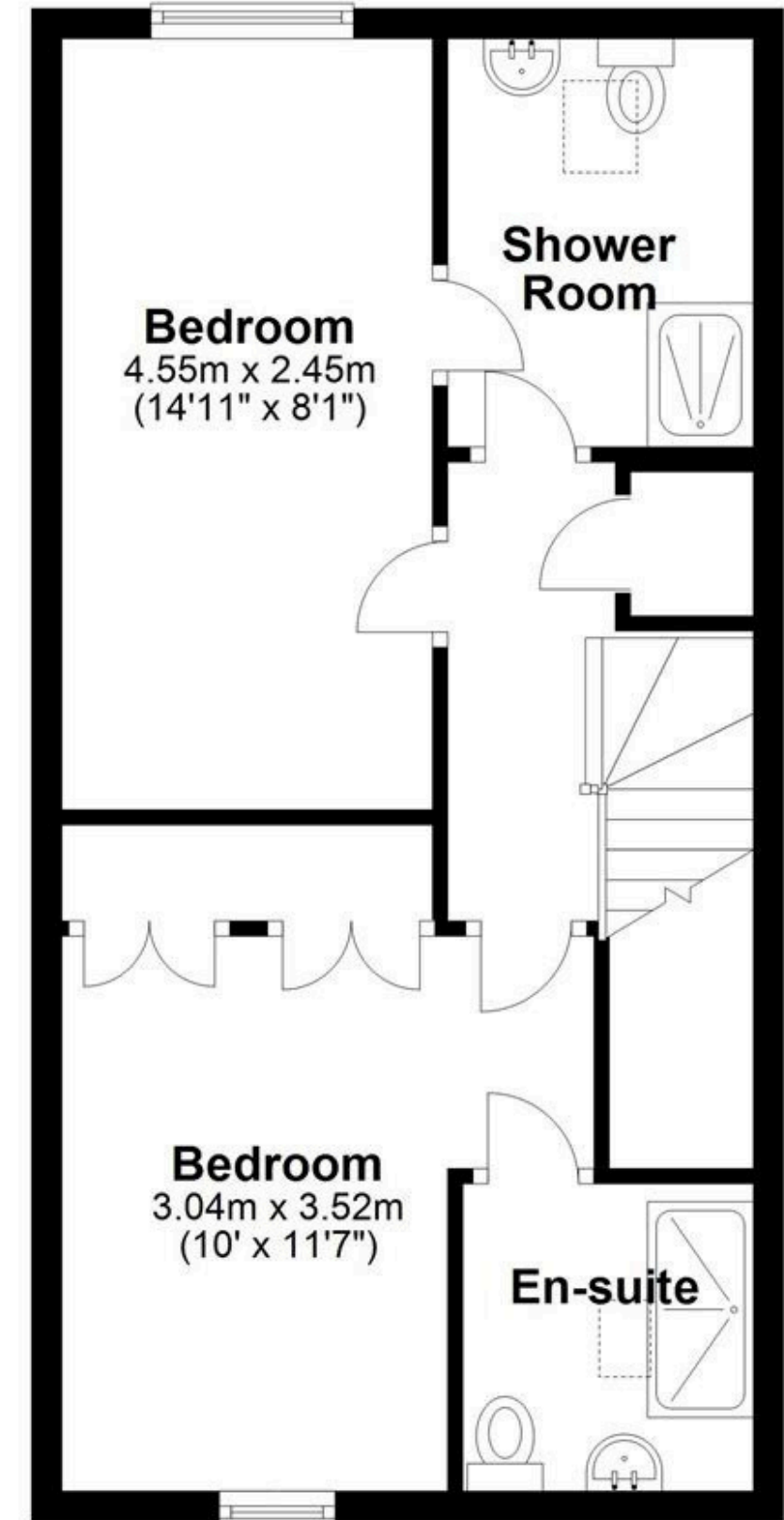
First Floor

Approx. 43.9 sq. metres (473.0 sq. feet)



Second Floor

Approx. 40.9 sq. metres (440.4 sq. feet)



Total area: approx. 128.5 sq. metres (1383.2 sq. feet)