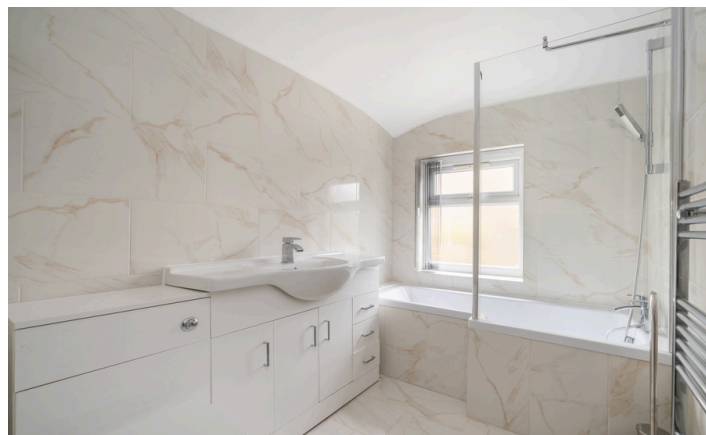


Need a Mortgage in principle to make offers? Call us now for quick assistance!
0121 775 0101



Do you need to sell? Start your journey now! Call us we can help.
0121 775 0101



SCAN FOR MORE INFO
SIZE - 1019 Sq Ft
TENURE - Freehold
COUNCIL TAX - Birmingham City Council - C
BROADBAND - Upload Max 220Mbps
Download Max 1000Mbps
MOBILE - EE O2
EPC - B - 83
PARKING - For at least 4 Cars
FLOODRISK - Very Low
SERVICES - Mains
COVENANTS - N/A

SOLIHULL LANE

Offers Over £300,000

Welcome to Solihull Lane in Hall Green - a charming semi-detached house that offers a fantastic opportunity for first time buyers, investors or those looking to downsize. Don't miss out on this wonderful opportunity to own a property in a sought-after location, with no upward chain and tastefully decorated in the popular grey and white colour scheme. This home is ready for you to move in and add your personal touch to make it truly yours.

FEATURES

- No Upward Chain
- Refurbished Property
- Lounge with Bay Window
- Open Plan Fitted Kitchen/Dining Room
- Spacious Conservatory
- Two Two Good Sized Double Bedrooms & Third Single
- Modern Family Bathroom
- Driveway Parking for Numerous Vehicles
- Private Rear Garden
- Conveniently Located for Local Amenities

Are you an investor interested in expanding your portfolio?

Call 0121 775 0101 to provide your investment criteria for alerts.



SCAN TO VIEW OUR WEEKLY FILMS & SUBSCRIBE

Sneak Peeks

Every week, we unveil "Sneak Peeks," a feature showcasing exclusive properties before they hit Rightmove and other platforms.

The Landlord Club

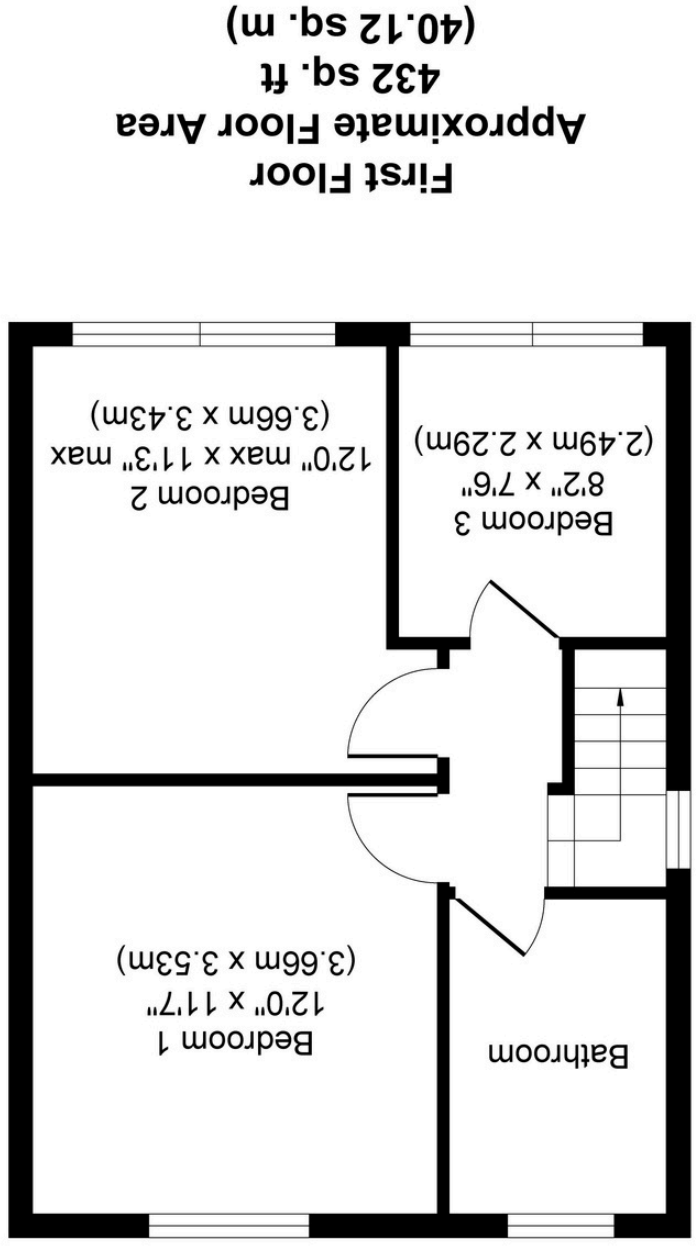
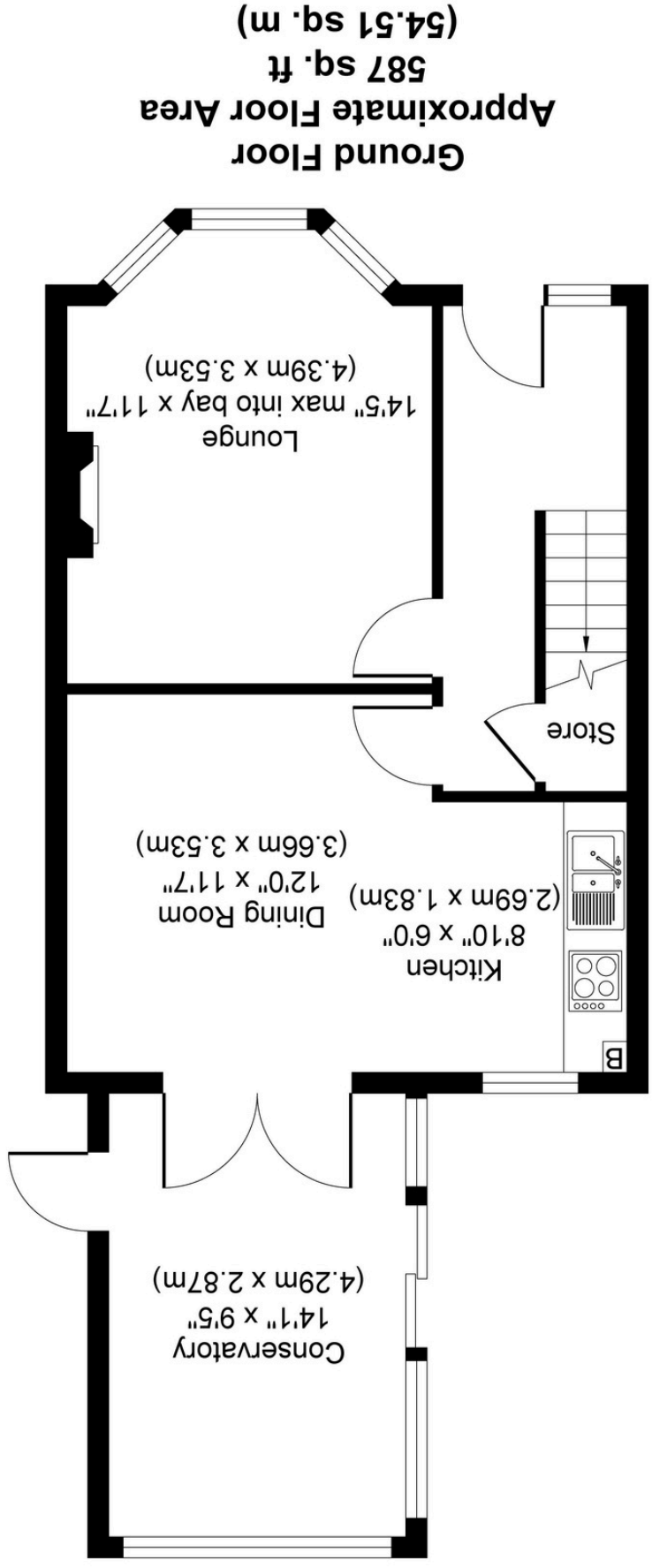
Join our Landlord Club for weekly updates on legislation, market trends, and our Letting Director's 'Investment Pick of the Week' for optimal ROI.

HTSPMD

Tune into 'How's The Solihull Property Market Dom' weekly for a quick, insightful snapshot of the market.

The Mortgage Update

Get weekly insights and the best deals with our Mortgage Update, your shortcut to navigating the complex mortgage landscape confidently.



Whilst every attempt has been made to ensure the accuracy of the floor plan contained here, measurements of doors, windows, rooms and any other items are approximate and no responsibility is taken for any error, omission, or mis-statement. The measurements should not be relied upon for valuation, transaction and/or funding purposes. This plan is for illustrative purposes only and should be used as such by any prospective purchaser or tenant. The services, systems and appliances shown have not been tested and no guarantee as to their operability or efficiency can be given.

Copyright V360 Ltd 2024 | www.houseviz.com