

Need a Mortgage in principle to make offers? Call us now for quick assistance!  
0121 775 0101



Do you need to sell? Start your journey now! Call us we can help.  
0121 775 0101



**SCAN FOR MORE INFO**  
**SIZE** - 1641 Sq Ft  
**TENURE** - Freehold  
**COUNCIL TAX** - Solihull MBC - E  
**BROADBAND** - Upload Max 1000 Mbps  
 Download Max 1000 Mbps  
**MOBILE** - EE Three O2 Vodafone  
**EPC** - D - 66  
**PARKING** - For at least 4 Cars  
**FLOODRISK** - Very Low  
**SERVICES** - Mains  
**COVENANTS** - N/A

## WIDNEY LANE

Offers Over £550,000

This delightful semi-detached house, built in the late 1930s, offers a perfect blend of character and modern comfort. Boasting four generously sized bedrooms and two bathrooms, this property is a spacious family property, and is ideally located for excellent schools and Solihull town centre.

### FEATURES

- Extended Semi-Detached House
- Spacious Accommodation
- Two Reception Rooms
- Fitted Kitchen with Large Breakfast Room/Utility
- Four Excellent Sized Bedrooms
- Family Bathroom
- Driveway Parking for 4 Vehicles
- Single Garage with Side Passageway
- Stunning Private Rear Garden
- Conveniently Located for Local Amenities & Schools

Are you an investor interested in expanding your portfolio?

Call 0121 775 0101 to provide your investment criteria for alerts.



SCAN TO VIEW OUR WEEKLY FILMS & SUBSCRIBE

### Sneak Peeks

Every week, we unveil "Sneak Peeks," a feature showcasing exclusive properties before they hit Rightmove and other platforms.

### The Landlord Club

Join our Landlord Club for weekly updates on legislation, market trends, and our Letting Director's 'Investment Pick of the Week' for optimal ROI.

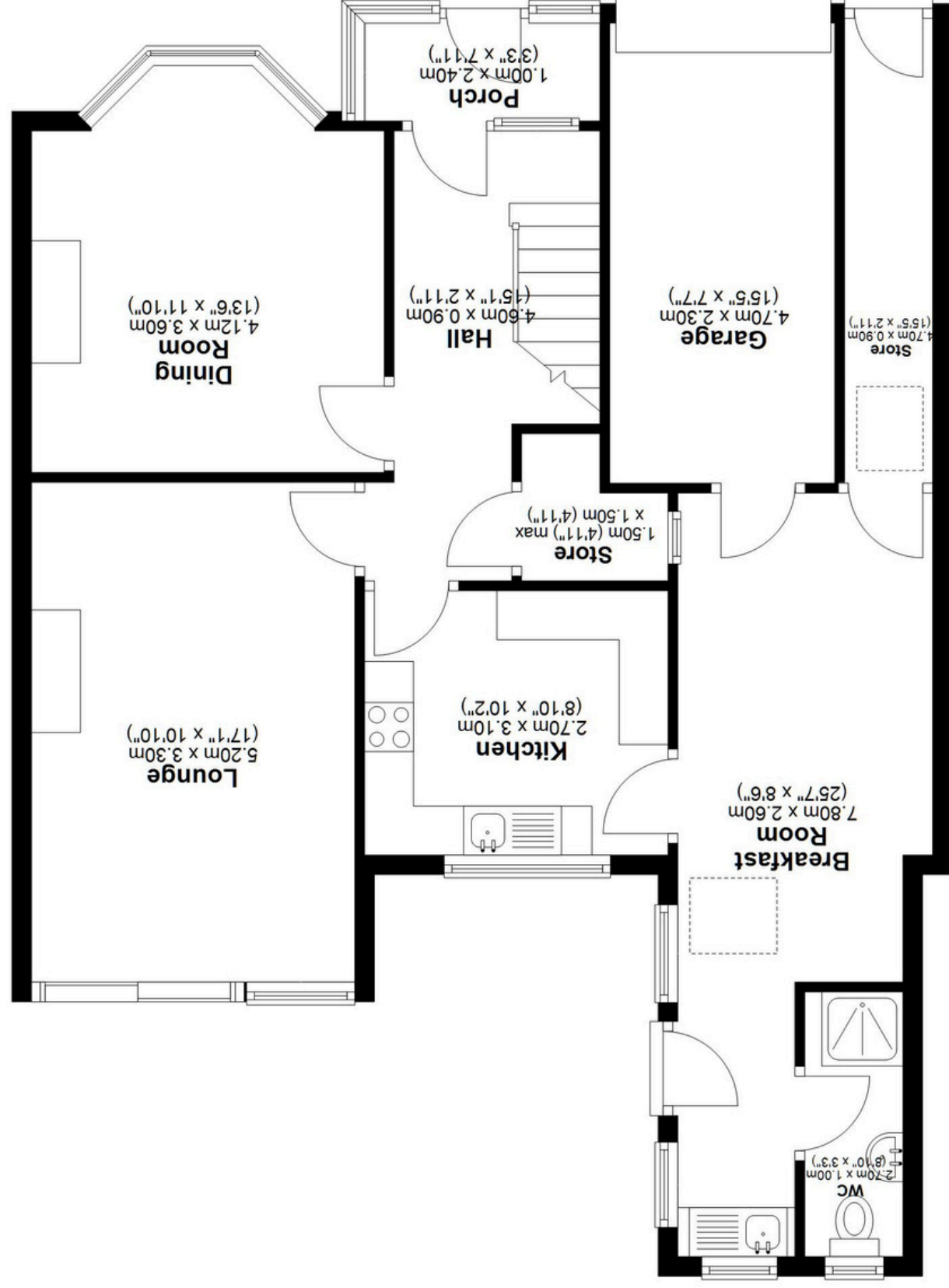
### HTSPMD

Tune into 'How's The Solihull Property Market Dom' weekly for a quick, insightful snapshot of the market.

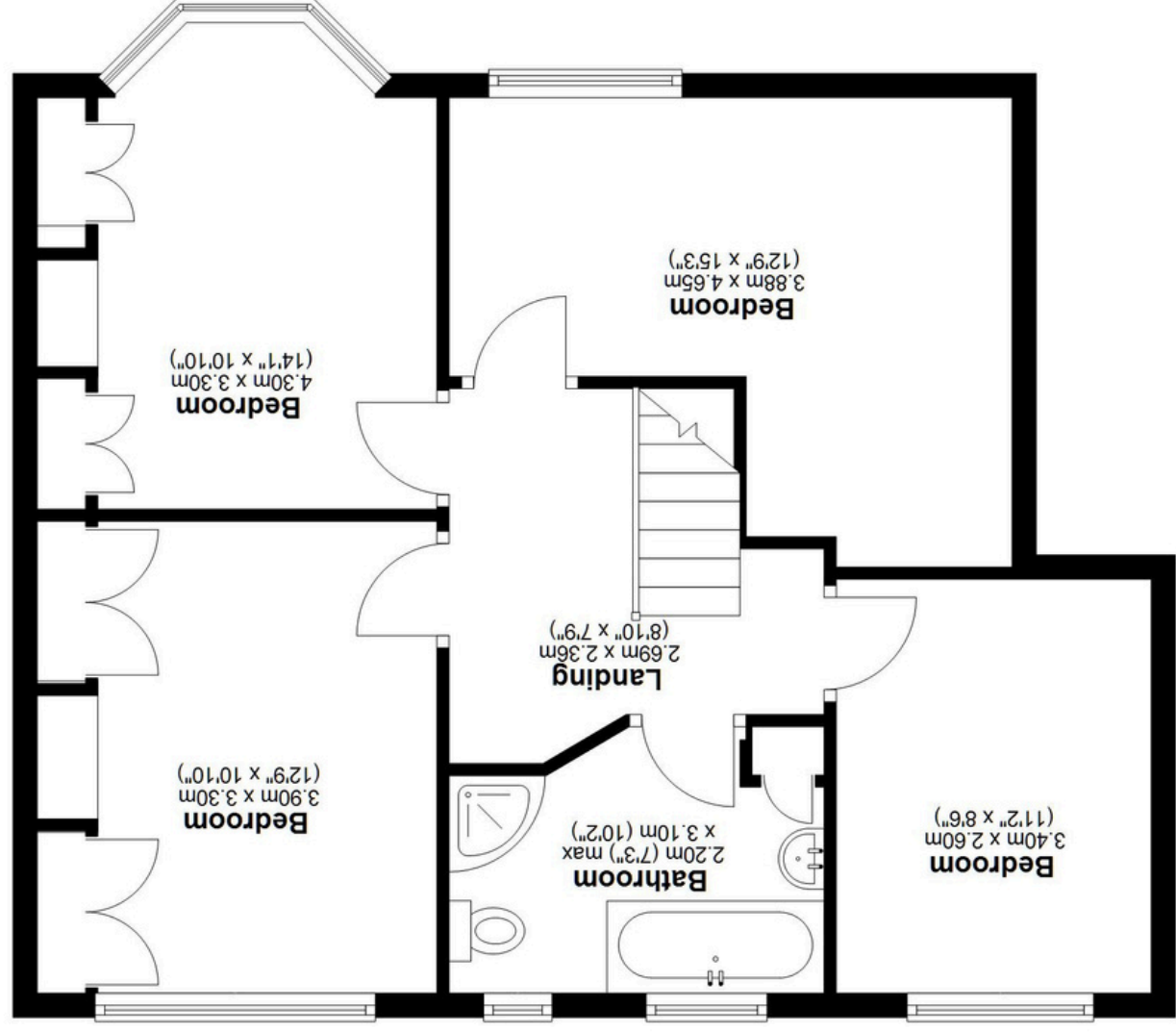
### The Mortgage Update

Get weekly insights and the best deals with our Mortgage Update, your shortcut to navigating the complex mortgage landscape confidently.

**Ground Floor**  
Approx. 89.9 sq. metres (968.0 sq. feet)



**First Floor**  
Approx. 64.1 sq. metres (690.0 sq. feet)



Total area: approx. 154.0 sq. metres (1658.0 sq. feet)

44 Widney Lane, Solihull