

Need a Mortgage in principle
to make offers? Call us now
for quick assistance!
0121 775 0101



Do you need to sell?
Start your journey now!
Call us we can help.
0121 775 0101



SCAN FOR MORE INFO
SIZE - 967 Sq Ft
TENURE - Freehold
COUNCIL TAX - Solihull MBC - E
BROADBAND - Upload Max 1000Mbps
Download Max 1000Mbps
MOBILE - EE O2 Vodafone
EPC - D - 65
PARKING - For 1 Car
FLOODRISK - Very Low
SERVICES - Mains
COVENANTS - N/A

Are you an investor
interested in expanding your
portfolio?

**Call 0121 775 0101 to provide your
investment criteria for alerts.**

THORNGROVE AVENUE

Solihull, B91

Nestled in the sought-after area of Thorngrove Avenue in Hillfield, Solihull this charming detached family home is offered with no upward chain. This property presents an excellent opportunity for families wishing to take advantage of the popular Tudor Grange catchment or those looking to downsize.

FEATURES

- Detached Family Home
- Lounge with Bay Window
- Kitchen/Dining Room
- Ground Floor Toilet
- Two Double Bedrooms with Fitted Wardrobes
- Third Single Bedroom
- Family Bathroom
- Private Rear Garden
- Driveway Parking & Single Garage
- Potential to Extend (STPP)
- Excellent Location for Solihull Town Centre & Widney Manor Train Station



SCAN TO **VIEW OUR
WEEKLY FILMS &
SUBSCRIBE**

Sneak Peeks

Every week, we unveil "Sneak Peeks," a feature showcasing exclusive properties before they hit Rightmove and other platforms.

The Landlord Club

Join our Landlord Club for weekly updates on legislation, market trends, and our Letting Director's 'Investment Pick of the Week' for optimal ROI.

HTSPMD

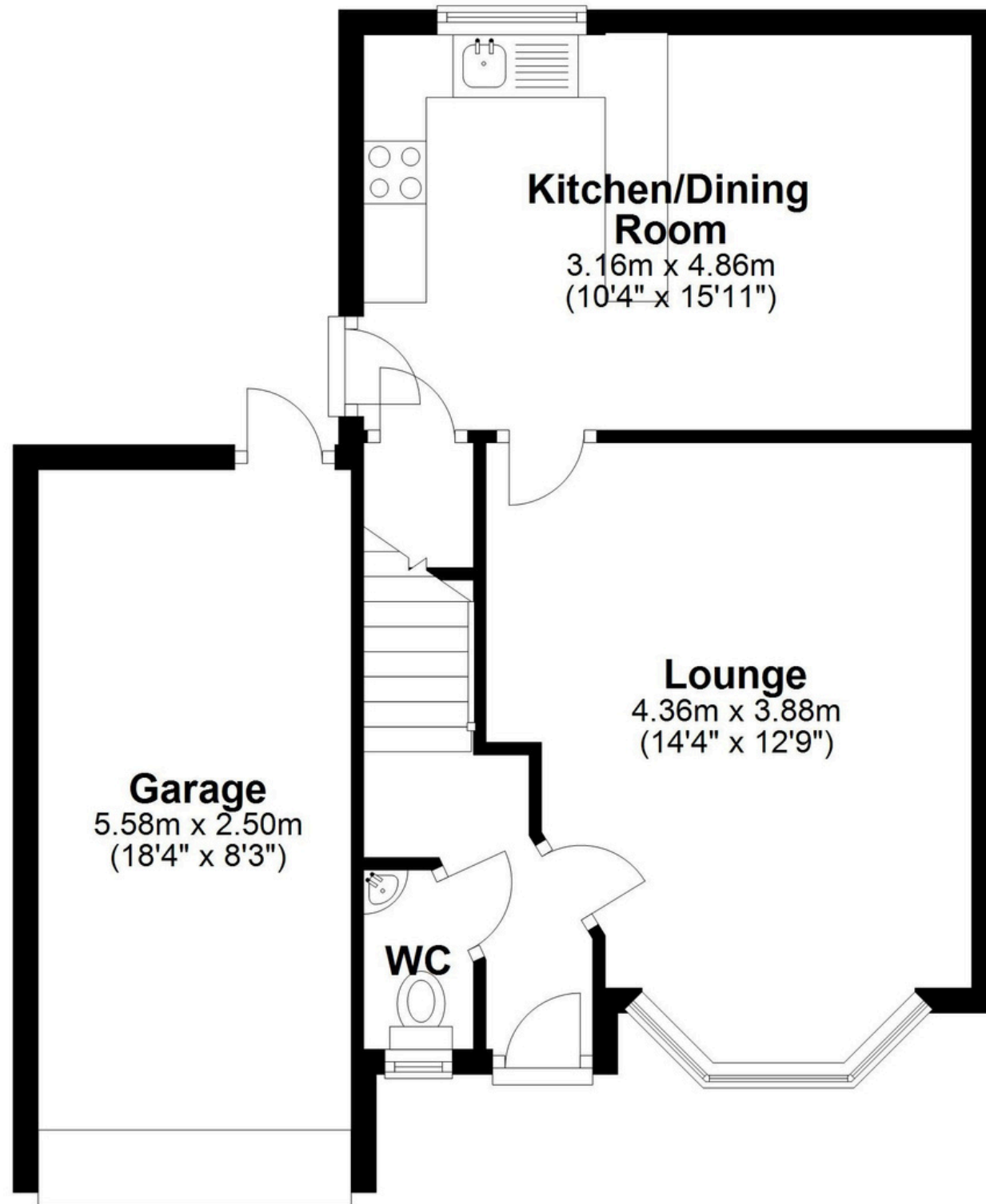
Tune into 'How's The Solihull Property Market Dom' weekly for a quick, insightful snapshot of the market.

The Mortgage Update

Get weekly insights and the best deals with our Mortgage Update, your shortcut to navigating the complex mortgage landscape confidently.

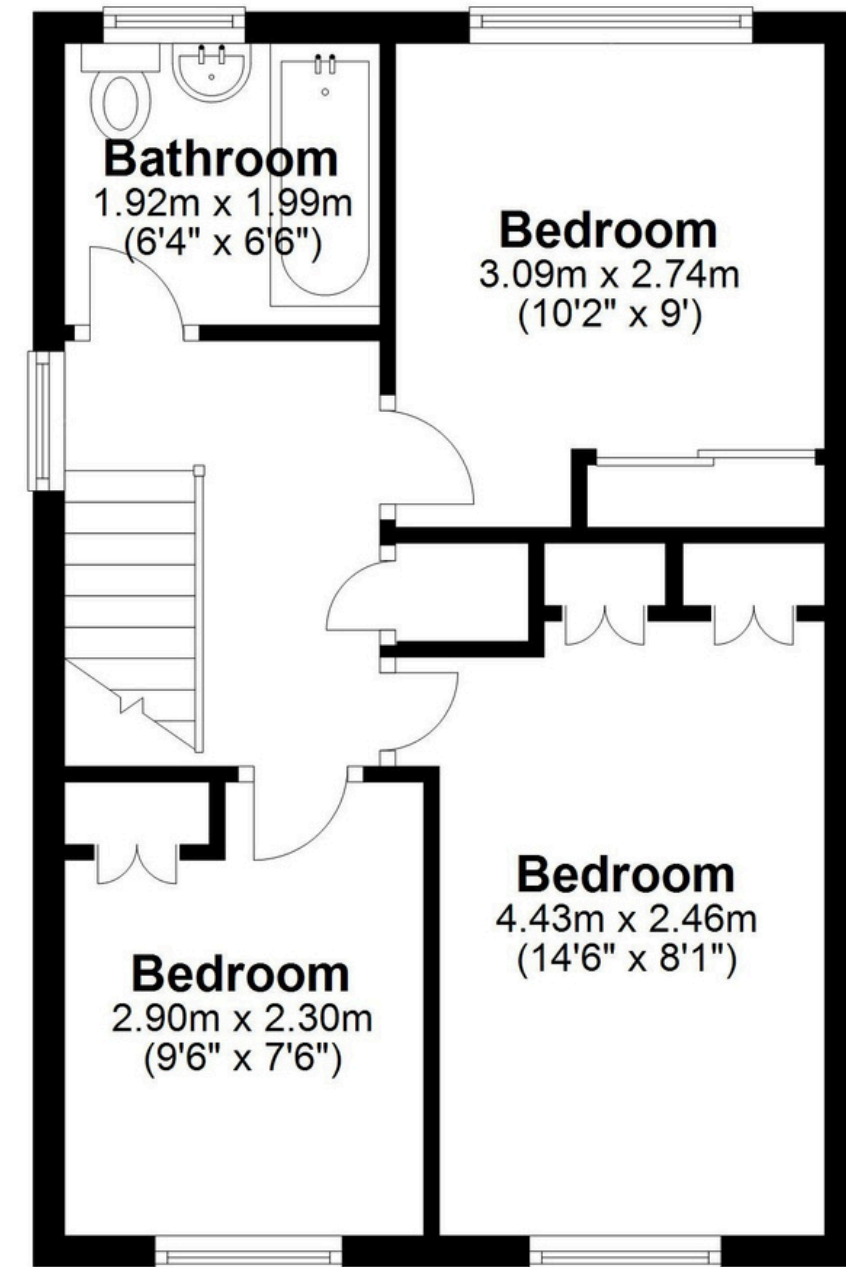
Ground Floor

Approx. 52.7 sq. metres (566.9 sq. feet)



First Floor

Approx. 37.2 sq. metres (400.7 sq. feet)



Total area: approx. 89.9 sq. metres (967.6 sq. feet)

This floor plan is for illustration purposes only, this is not intended to be a measured/scaled survey or comply with RICS guidelines. All measurements (including total floor area) openings, orientation and floor area are approximate. No details are guaranteed, they cannot be relied upon for any purpose and do not form part of any agreement. A party must rely upon its own inspection(s). No responsibility is taken for any error, omission, or mis-statement.

Plan produced using PlanUp.