

Need a Mortgage in principle
to make offers? Call us now
for quick assistance!
0121 775 0101



Do you need to sell?
Start your journey now!
Call us we can help.
0121 775 0101



SCAN FOR MORE INFO
SIZE - 1212 Sq Ft
TENURE - Freehold
COUNCIL TAX - Solihull MBC - E
BROADBAND - Upload Max 1000Mbps
Download Max 1000Mbps
MOBILE - EE Three
EPC - D - 66
PARKING - For at least 4 Cars
FLOODRISK - Very Low
SERVICES - Mains
COVENANTS - N/A

Are you an investor
interested in expanding your
portfolio?

**Call 0121 775 0101 to provide your
investment criteria for alerts.**

MAYBRIDGE DRIVE

Hillfield, B91

Located in a quiet cul-de-sac in the charming Hillfield area of Solihull, this stunning detached house is situated in the sought-after Tudor Grange catchment area and combines convenience with tranquillity, making it an ideal place to call home. Don't miss the opportunity to make this beautifully presented house your own and enjoy the best of family living in this desirable location.

FEATURES

- Beautifully Presented Detached Family Home
- Tudor Grange Catchment
- Spacious Lounge & Separate Dining Room
- Fitted Kitchen with Range Cooker
- Utility & Store Room
- Four Good Sized Bedrooms
- Modern Family Bathroom
- Private North West Facing Rear Garden
- Driveway Parking for Four Vehicles
- Excellent Location for Solihull Town Centre
- 10 Minute Walk to Widney Manor Train Station



SCAN TO **VIEW OUR**
WEEKLY FILMS &
SUBSCRIBE



Sneak Peeks

Every week, we unveil "Sneak Peeks," a feature showcasing exclusive properties before they hit Rightmove and other platforms.



The Landlord Club

Join our Landlord Club for weekly updates on legislation, market trends, and our Letting Director's 'Investment Pick of the Week' for optimal ROI.



HTSPMD

Tune into 'How's The Solihull Property Market Dom' weekly for a quick, insightful snapshot of the market.

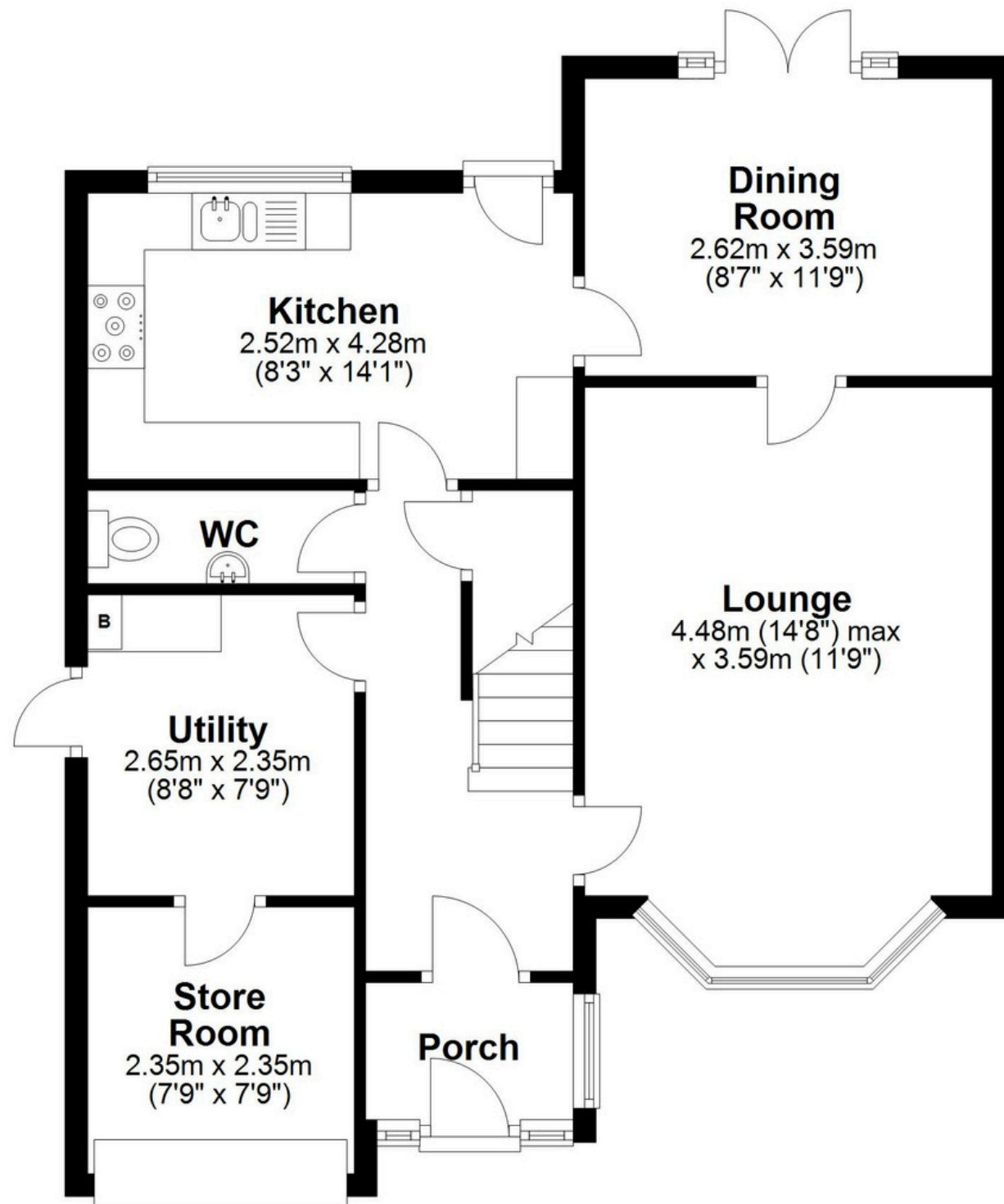


The Mortgage Update

Get weekly insights and the best deals with our Mortgage Update, your shortcut to navigating the complex mortgage landscape confidently.

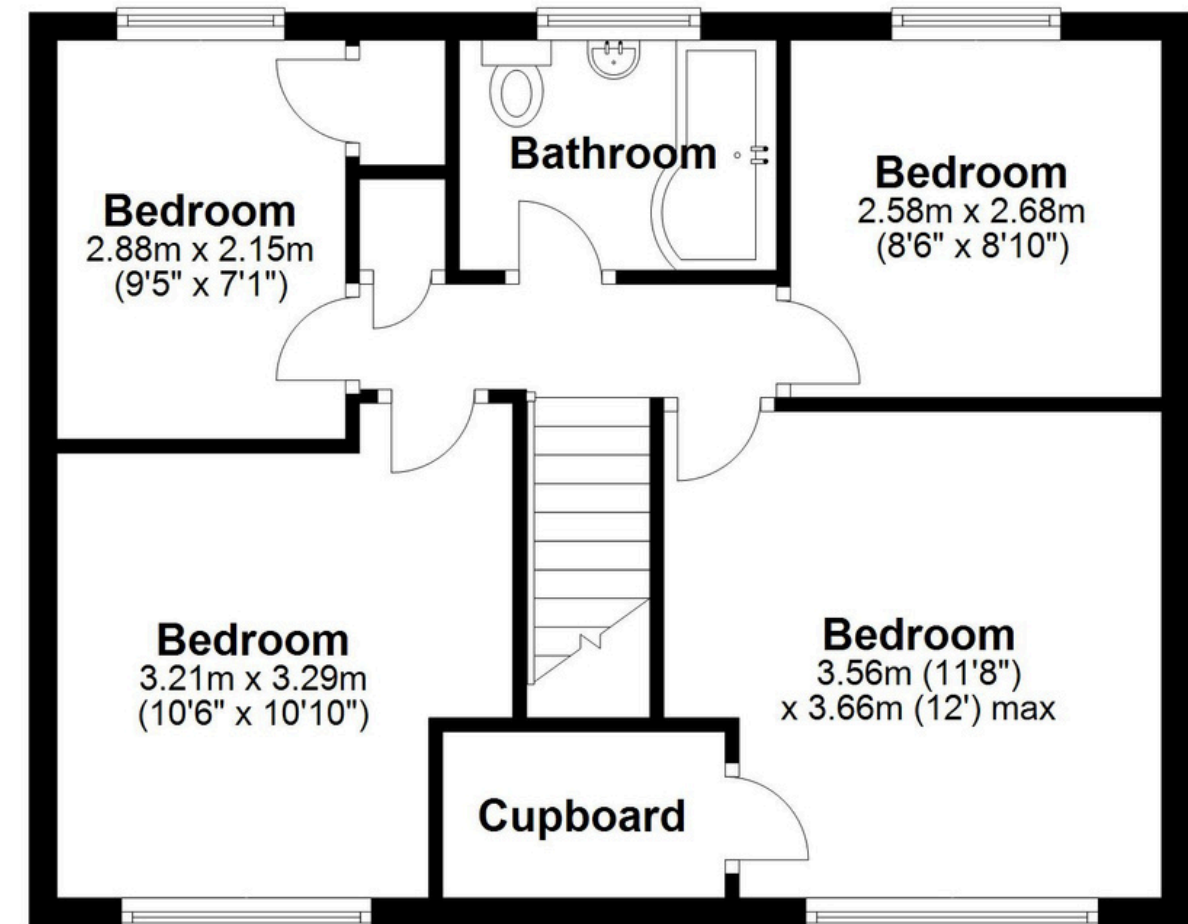
Ground Floor

Approx. 63.0 sq. metres (677.7 sq. feet)



First Floor

Approx. 49.7 sq. metres (535.2 sq. feet)



Total area: approx. 112.7 sq. metres (1212.8 sq. feet)

This floor plan is for illustration purposes only, this is not intended to be a measured/scaled survey or comply with RICS guidelines. All measurements (including total floor area) openings, orientation and floor area are approximate. No details are guaranteed, they cannot be relied upon for any purpose and do not form part of any agreement. A party must rely upon its own inspection(s). No responsibility is taken for any error, omission, or mis-statement.
Plan produced using PlanUp.