

Need a Mortgage in principle
to make offers? Call us now
for quick assistance!
0121 775 0101



Do you need to sell?
Start your journey now!
Call us we can help.
0121 775 0101



SCAN FOR MORE INFO
SIZE - 1237 Sq Ft
TENURE - Freehold
COUNCIL TAX - Solihull MBC - E
BROADBAND - Upload Max 1G000Mbps
Download Max 1000Mbps
MOBILE - O2 Vodafone
EPC - C - 69
PARKING - For at least 3 Cars
FLOODRISK - Very Low
SERVICES - Mains
COVENANTS - N/A

Are you an investor
interested in expanding your
portfolio?

**Call 0121 775 0101 to provide your
investment criteria for alerts.**

HAY LANE

Offers in the region of £500,000

Welcome to this stunning detached family home located on the sought-after Monkspath development on Hay Lane. This beautifully presented property offers ample room for a growing family. Don't miss the opportunity to make this detached family home your own and enjoy the comfort and style it has to offer.

FEATURES

- Detached family Home in Popular Location
- Potential to Extend (STPP)
- Lounge with Feature Bay Window
- Stunning Open Plan Breakfast kitchen/Family/Dining Room
- Separate Utility Room
- Two Double Bedrooms and Single Third
- En-Suite & Family Bathroom
- Private Rear Garden
- Driveway Parking with Single Garage
- Convenient Location



SCAN TO VIEW OUR
WEEKLY FILMS &
SUBSCRIBE

Sneak Peeks

Every week, we unveil "Sneak Peeks," a feature showcasing exclusive properties before they hit Rightmove and other platforms.

The Landlord Club

Join our Landlord Club for weekly updates on legislation, market trends, and our Letting Director's 'Investment Pick of the Week' for optimal ROI.

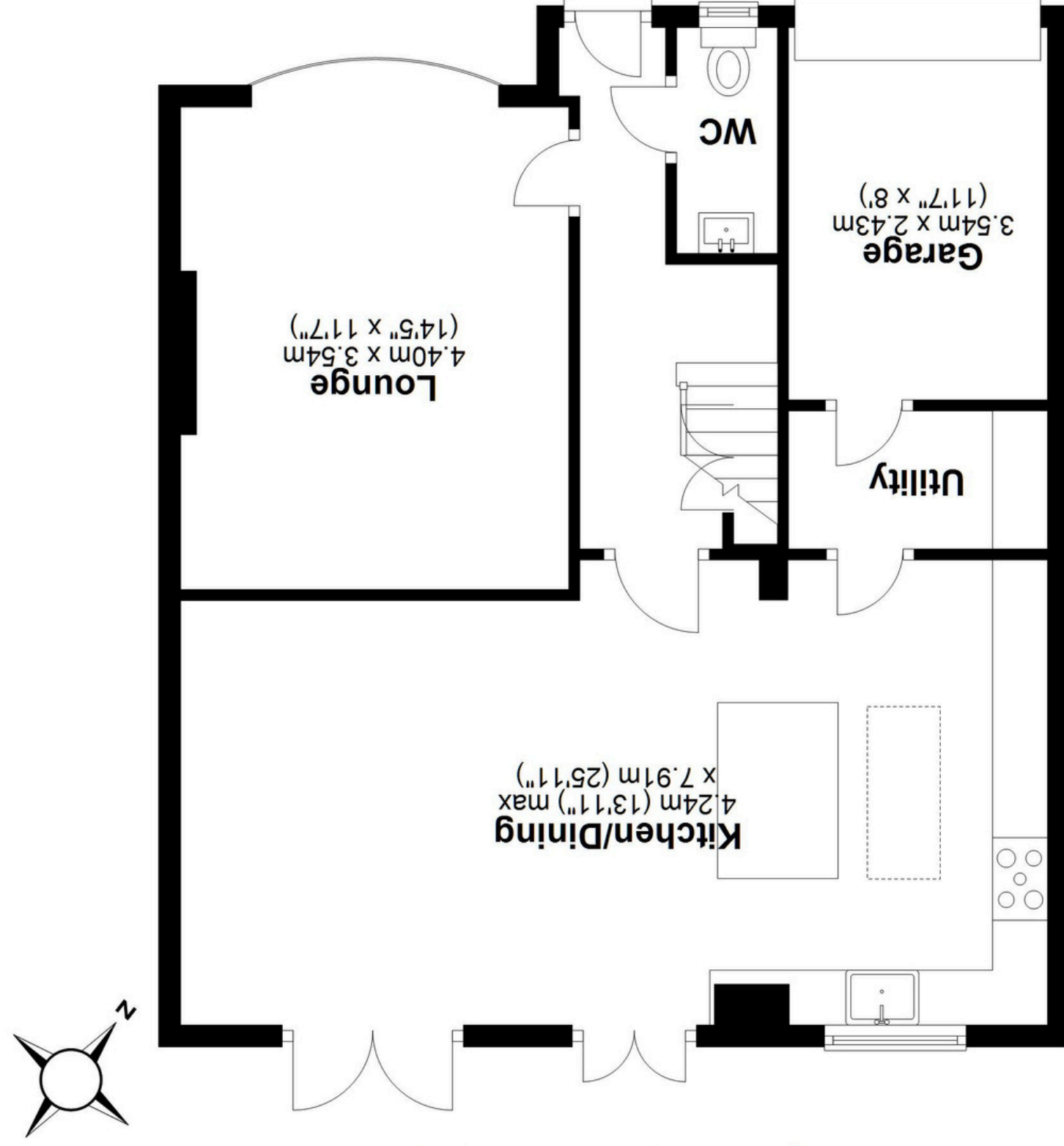
HTSPMD

Tune into 'How's The Solihull Property Market Dom' weekly for a quick, insightful snapshot of the market.

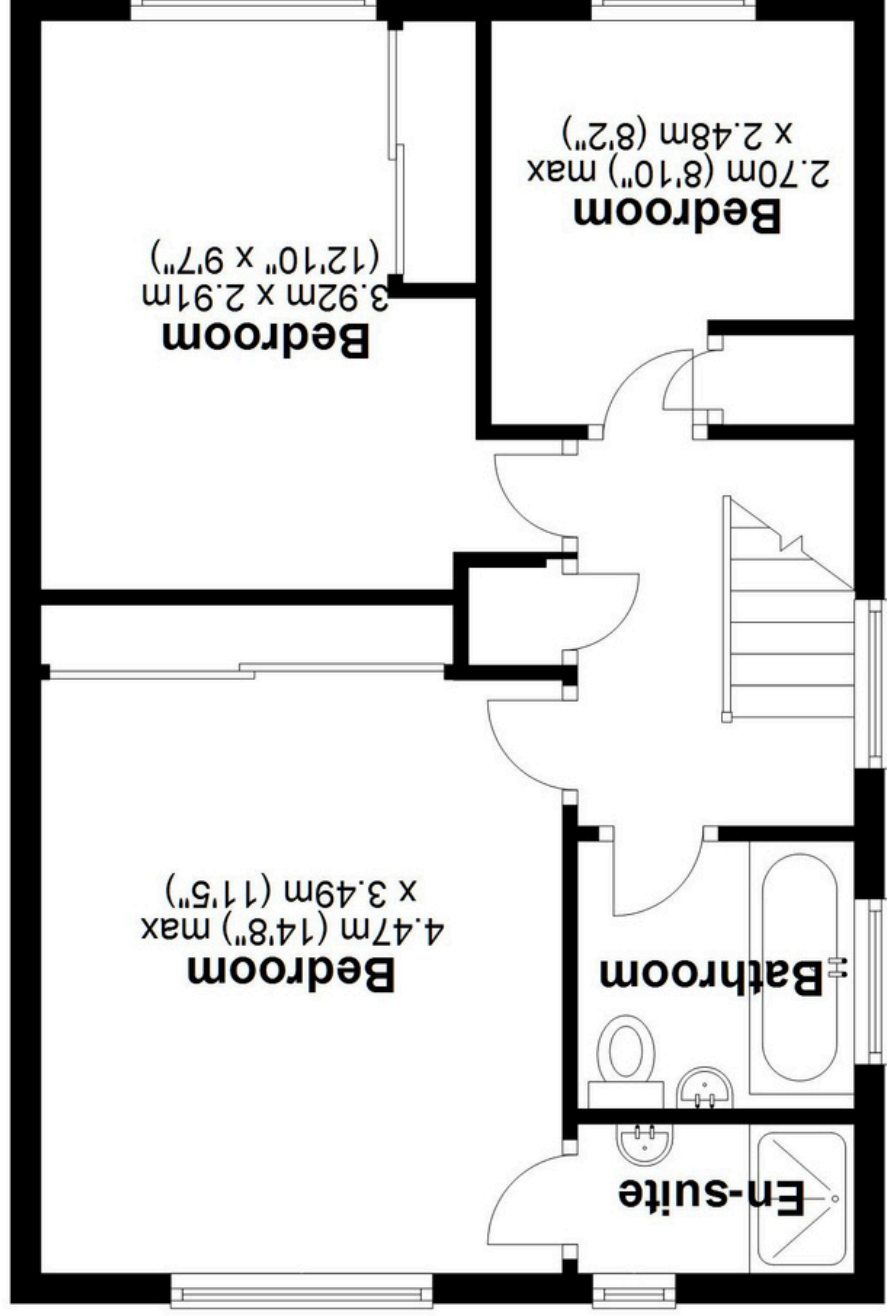
The Mortgage Update

Get weekly insights and the best deals with our Mortgage Update, your shortcut to navigating the complex mortgage landscape confidently.

Ground Floor
Approx. 69.5 sq. metres (748.6 sq. feet)



First Floor
Approx. 45.4 sq. metres (488.8 sq. feet)



Total area: approx. 115.0 sq. metres (1237.4 sq. feet)

This floor plan is for illustration purposes only, this is not intended to be a measured/scaled survey or comply with RICS guidelines. All measurements (including total floor area) openings, orientation and floor area are approximate. No details are guaranteed, they cannot be relied upon for any purpose and do not form part of any agreement. A party must rely upon its own inspection(s). No responsibility is taken for any error, omission, or mis-statement.
Plan produced using PlanUp.