

Need a Mortgage in principle to make offers? Call us now for quick assistance!
0121 775 0101



Do you need to sell? Start your journey now! Call us we can help.
0121 775 0101



PARKDALE ROAD

Offers Over £260,000

SCAN FOR MORE INFO

SIZE - 847 Sq Ft
TENURE - Freehold
COUNCIL TAX - Birmingham City Council - B
BROADBAND - Upload Max 1000Mbps
Download Max 1000Mbps
MOBILE - EE Three O2 Vodafone
EPC - D - 63
PARKING - For at least 2 Cars
FLOODRISK - Very Low
SERVICES - Mains
COVENANTS - N/A

This charming semi-detached house offers a delightful opportunity for a new family to call it home. Built in the 1950's the extended and well maintained property is perfect for first time buyers, those wishing to downsize or even investors wanting to add to their portfolio.

FEATURES

- Extended Family Home
- Lounge with Bay Window to Front
- Breakfast Kitchen/Dining Room
- Two Double Bedrooms
- Third Single Bedroom
- Modern Family Bathroom
- Private Rear Garden
- Driveway Parking
- Conveniently Located for Local Amenities

Are you an investor interested in expanding your portfolio?

Call 0121 775 0101 to provide your investment criteria for alerts.



SCAN TO VIEW OUR WEEKLY FILMS & SUBSCRIBE

Sneak Peeks

Every week, we unveil "Sneak Peeks," a feature showcasing exclusive properties before they hit Rightmove and other platforms.

The Landlord Club

Join our Landlord Club for weekly updates on legislation, market trends, and our Letting Director's 'Investment Pick of the Week' for optimal ROI.

HTSPMD

Tune into 'How's The Solihull Property Market Dom' weekly for a quick, insightful snapshot of the market.

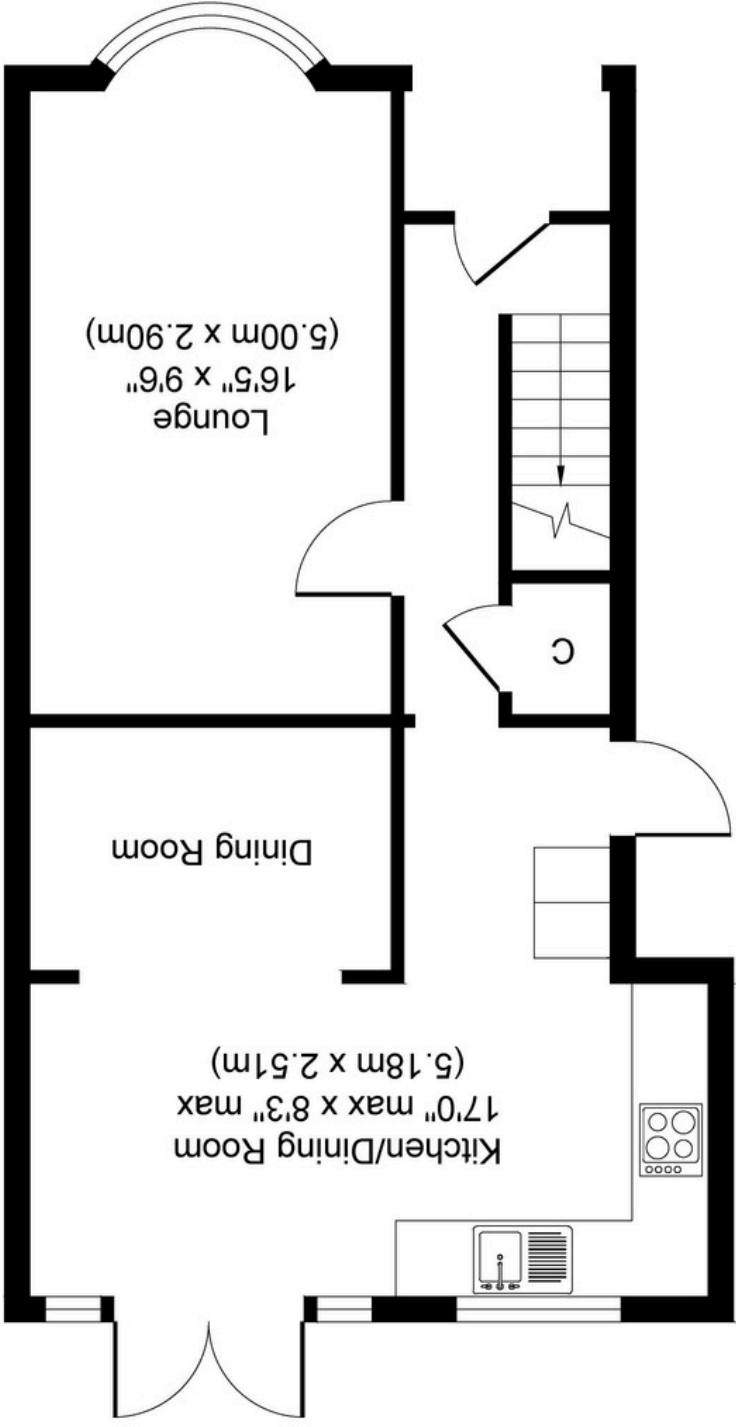
The Mortgage Update

Get weekly insights and the best deals with our Mortgage Update, your shortcut to navigating the complex mortgage landscape confidently.

Whilst every attempt has been made to ensure the accuracy of the floor plan contained here, measurements of doors, windows, rooms and any other items are approximate and no responsibility is taken for any error, omission, or mis-statement. The measurements should not be relied upon for valuation, transaction and/or funding purposes. This plan is for illustrative purposes only and should be used as such by any prospective purchaser or tenant. The services, systems and appliances shown have not been tested and no guarantee as to their operability or efficiency can be given.

Copyright V360 Ltd 2024 | www.houseviz.com

Ground Floor
492 sq. ft
(45.70 sq. m)
Approximate Floor Area



First Floor
355 sq. ft
(32.96 sq. m)
Approximate Floor Area

