

Need a Mortgage in principle  
to make offers? Call us now  
for quick assistance!  
**0121 775 0101**



Do you need to sell?  
Start your journey now!  
Call us we can help.  
**0121 775 0101**



**SCAN FOR MORE INFO**  
**SIZE** - 2724 Sq Ft  
**TENURE** - Freehold  
**COUNCIL TAX** - Solihull MBC - G  
**BROADBAND** - Upload Max 220GBps  
Download Max 1000GBps  
**MOBILE** - EE  
**EPC** - B - 84  
**PARKING** - For at least 2 Cars  
**FLOODRISK** - Very Low  
**SERVICES** - Mains  
**COVENANTS** - N/A

Are you an investor  
interested in expanding your  
portfolio?

**Call 0121 775 0101 to provide your  
investment criteria for alerts.**

## BROCKHURST LANE

Dickens Heath, B90

Nestled on the edge of Dickens Heath, this detached house is a true gem waiting to be discovered.

Offering a contemporary lifestyle with a touch of sophistication, the property overlooks the Stratford upon Avon canal and has a picturesque setting for a peaceful lifestyle. Boasting four bedrooms and four bathrooms, it truly is a fantastic family home.

### FEATURES

- Executive Detached Family Home
- Beautifully Presented Throughout
- Two Reception Rooms
- Stunning Kitchen/Family Room with Bi-Fold Doors
- Utility Room with Access to a Large Room Over the Garage
- Three Bedrooms with Fitted Wardrobes & En-Suite Facilities
- Fourth Double Bedroom and Family Bathroom
- Stunning Private Rear Garden with Outdoor Kitchen/Seating Area
- Driveway Parking and Double Garage
- Solar Panels & Tesla Battery



SCAN TO VIEW OUR  
WEEKLY FILMS &  
SUBSCRIBE

### Sneak Peeks

Every week, we unveil "Sneak Peeks," a feature showcasing exclusive properties before they hit Rightmove and other platforms.

### The Landlord Club

Join our Landlord Club for weekly updates on legislation, market trends, and our Letting Director's 'Investment Pick of the Week' for optimal ROI.

### HTSPMD

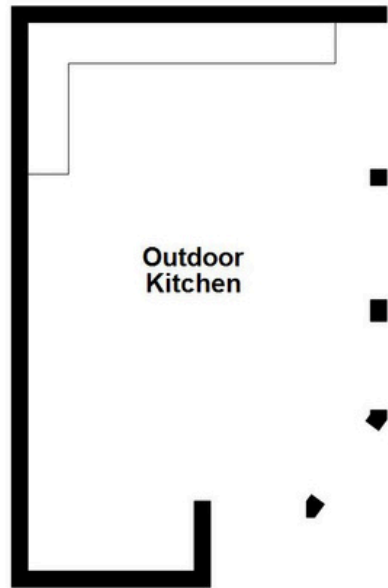
Tune into 'How's The Solihull Property Market Dom' weekly for a quick, insightful snapshot of the market.

### The Mortgage Update

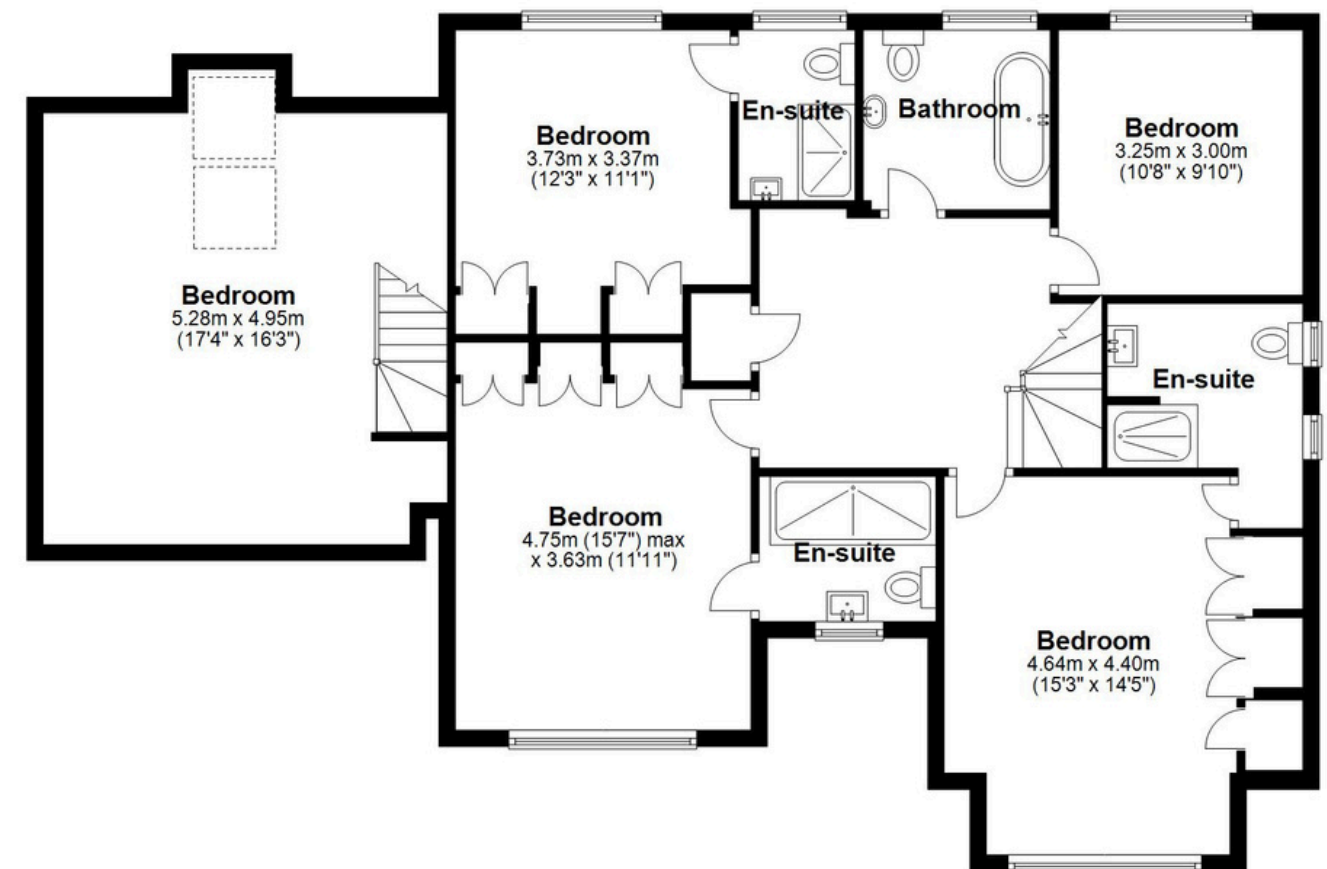
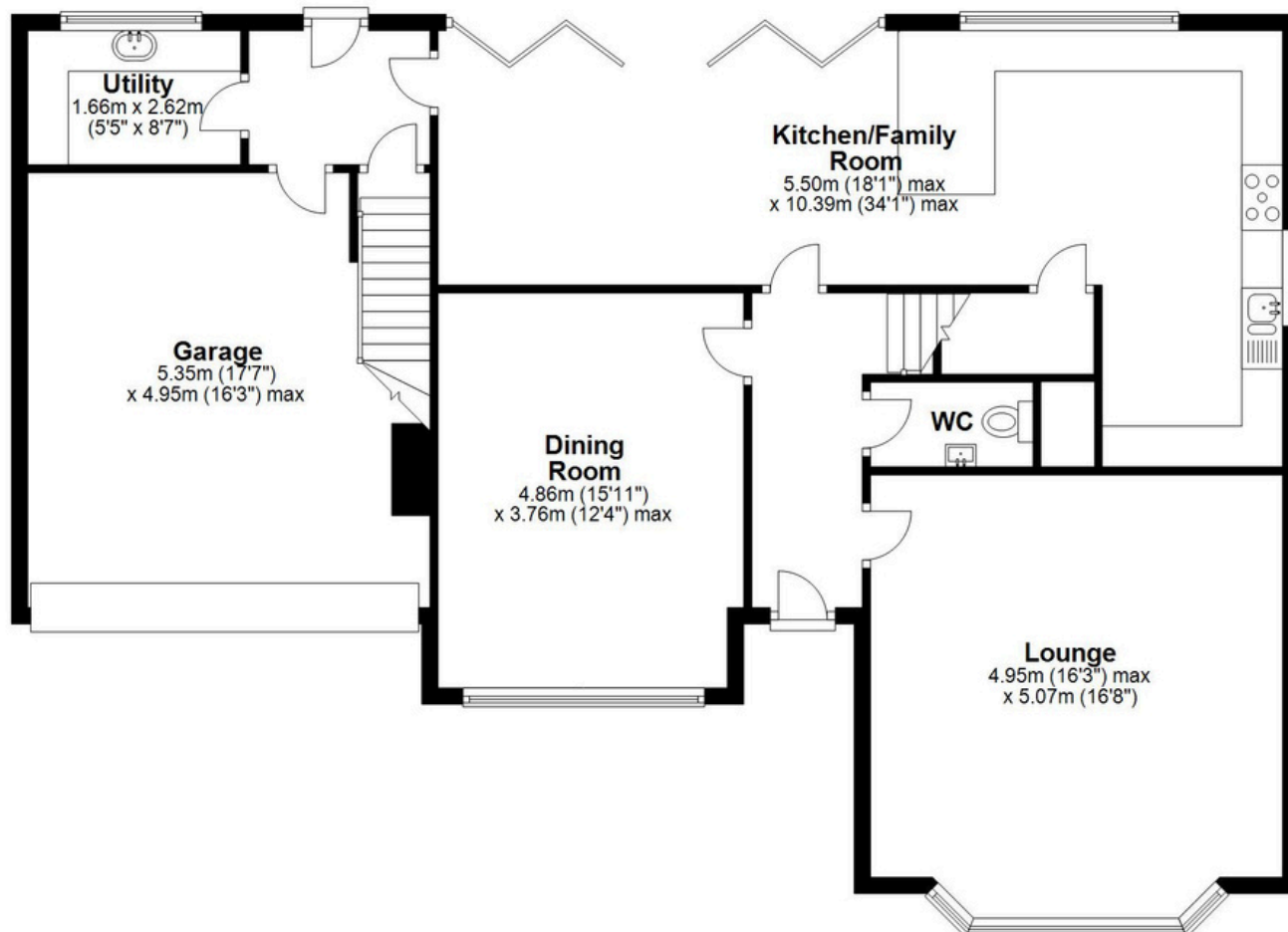
Get weekly insights and the best deals with our Mortgage Update, your shortcut to navigating the complex mortgage landscape confidently.



**Main area: approx. 135.2 sq. metres (1455.4 sq. feet)**  
Plus outdoor kitchen, approx. 26.0 sq. metres (279.4 sq. feet)



Approx. 117.9 sq. metres (1269.0 sq. feet)



Main area: Approx. 253.1 sq. metres (2724.4 sq. feet)

Plus outdoor kitchen, approx. 26.0 sq. metres (279.4 sq. feet)

This floor plan is for illustration purposes only, this is not intended to be a measured/scaled survey or comply with RICS guidelines. All measurements (including total floor area) openings, orientation and floor area are approximate. No details are guaranteed, they cannot be relied upon for any purpose and do not form part of any agreement. A party must rely upon its own inspection(s). No responsibility is taken for any error, omission, or mis-statement.  
Plan produced using PlanUp.