

Need a Mortgage in principle to make offers? Call us now for quick assistance!
0121 775 0101



Do you need to sell? Start your journey now! Call us we can help.
0121 775 0101



SCAN FOR MORE INFO
SIZE - 1466 Sq Ft
TENURE - Freehold
COUNCIL TAX - Solihull MBC - E
BROADBAND - Upload Max 1000MBps
Download Max 1000MBps
MOBILE - EE Three O2
EPC - D - 64
PARKING - For at least 4 Cars
FLOODRISK - Very Low
SERVICES - Mains
COVENANTS - N/A

RESERVOIR ROAD

Offers in the region of £565,000

Located on Reservoir Road in Solihull, this charming semi-detached house offers a wonderful opportunity for a new homeowner. With the potential to further extend the property (subject to planning permission), this home presents a fantastic opportunity for those looking to create their dream living space in a sought-after location.

FEATURES

- Semi-Detached Family Home with Potential to Further Extend (STPP)
- Re-Decorated within the Last 3 Years to Include a New Kitchen
- Two Reception Rooms
- To Large Double Bedrooms
- Third Good Sized Double Bedroom & Fourth Single
- Modern Family Bathroom
- Private Landscaped Rear Garden with Wrap Around Patio
- Driveway Parking for Four Vehicles
- Single Garage
- Convenient Location

Are you an investor interested in expanding your portfolio?

Call 0121 775 0101 to provide your investment criteria for alerts.



SCAN TO VIEW OUR WEEKLY FILMS & SUBSCRIBE

Sneak Peeks

Every week, we unveil "Sneak Peeks," a feature showcasing exclusive properties before they hit Rightmove and other platforms.

The Landlord Club

Join our Landlord Club for weekly updates on legislation, market trends, and our Letting Director's 'Investment Pick of the Week' for optimal ROI.

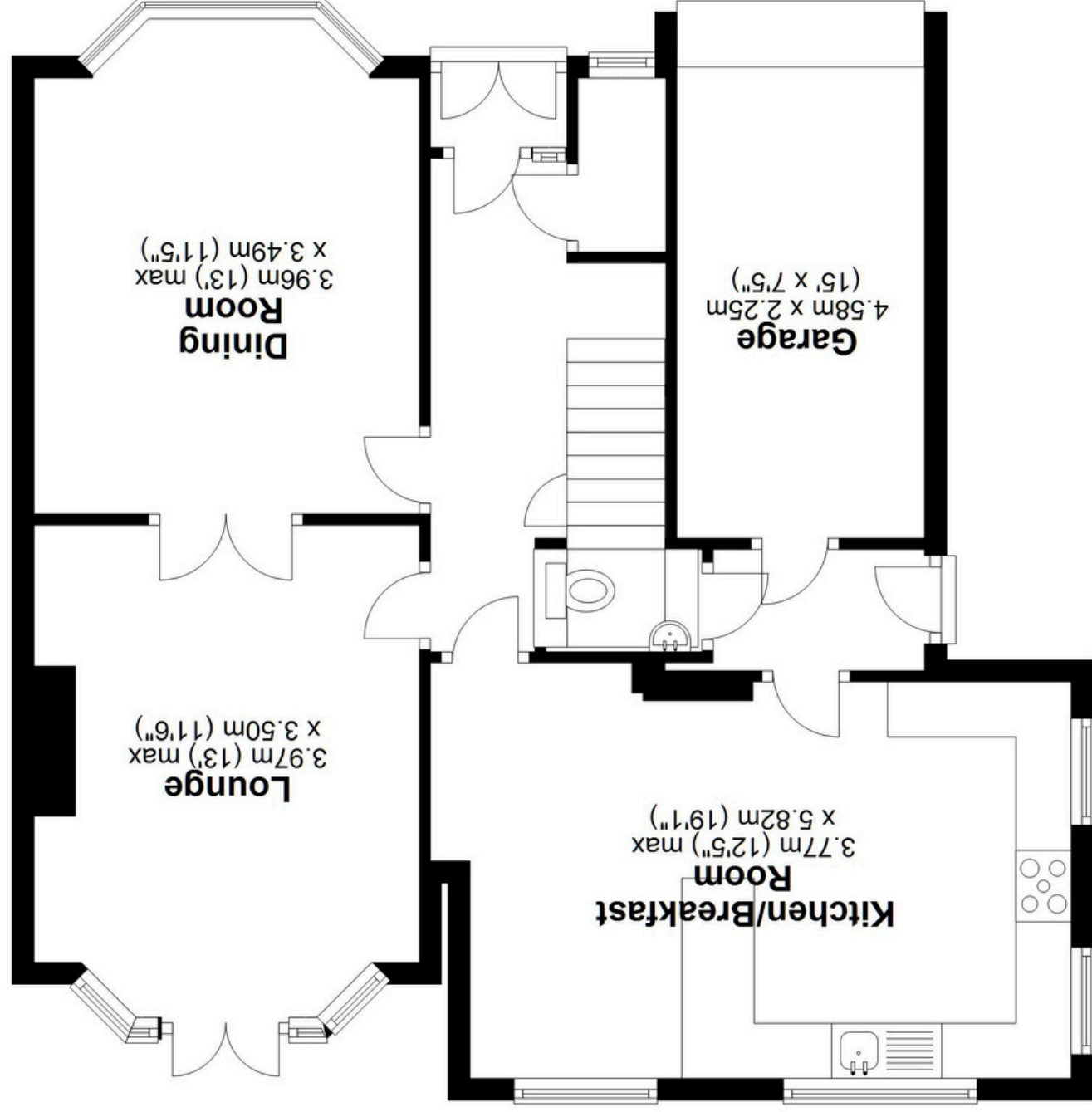
HTSPMD

Tune into 'How's The Solihull Property Market Dom' weekly for a quick, insightful snapshot of the market.

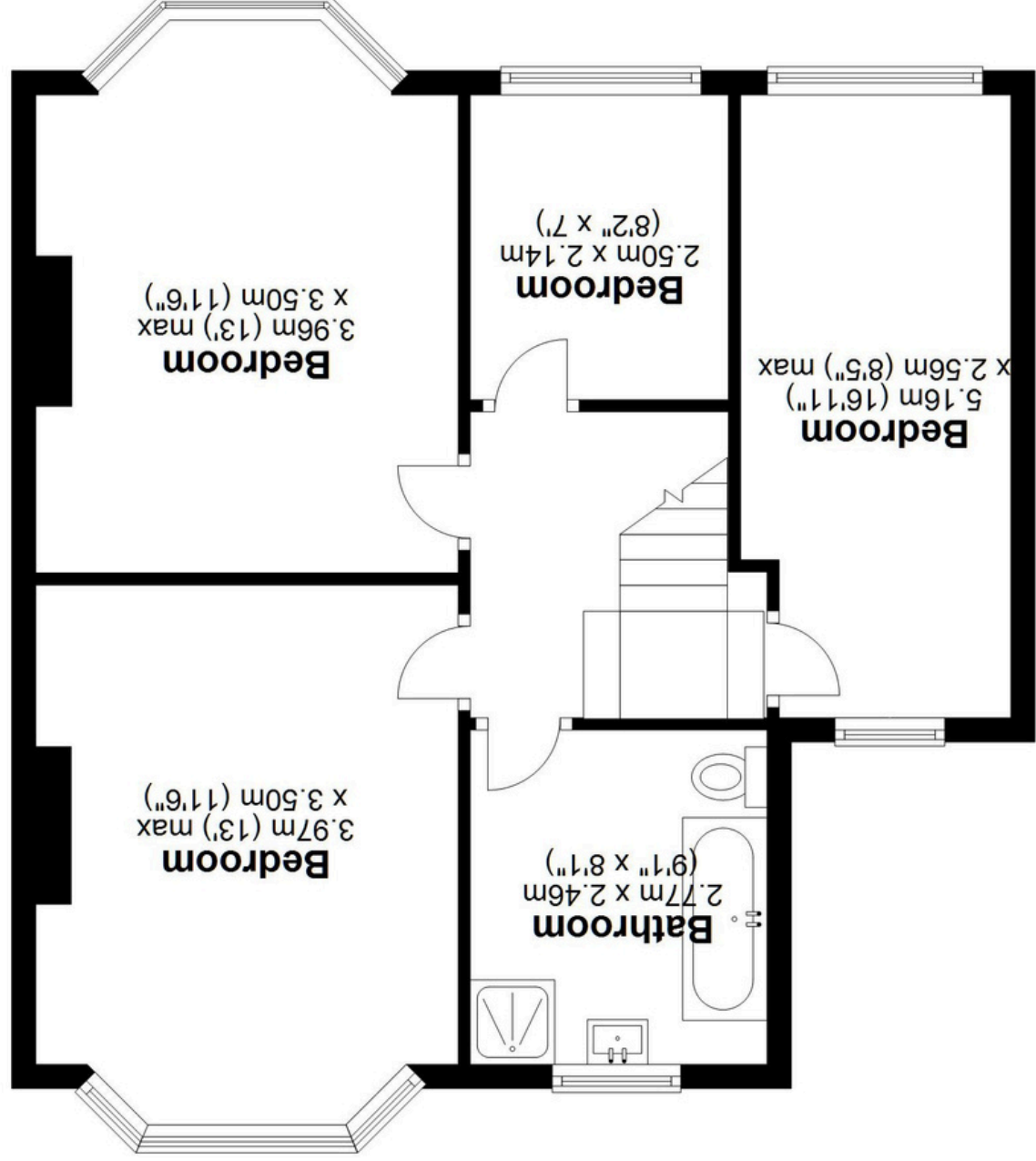
The Mortgage Update

Get weekly insights and the best deals with our Mortgage Update, your shortcut to navigating the complex mortgage landscape confidently.

Ground Floor
Approx. 75.7 sq. metres (815.3 sq. feet)



First Floor
Approx. 60.5 sq. metres (651.4 sq. feet)



Total area: approx. 136.3 sq. metres (1466.7 sq. feet)

This floor plan is for illustration purposes only, this is not intended to be a measured/scaled survey or comply with RICS guidelines. All measurements (including total floor area) openings, orientation and floor area are approximate. No details are guaranteed, they cannot be relied upon for any purpose and do not form part of any agreement. A party must rely upon its own inspection(s). No responsibility is taken for any error, omission, or mis-statement.

Plan produced using PlanUp.

