

Need a Mortgage in principle to make offers? Call us now for quick assistance!
0121 775 0101



Do you need to sell? Start your journey now! Call us we can help.
0121 775 0101



SCAN FOR MORE INFO
SIZE - 688 Sq Ft
TENURE - Freehold
COUNCIL TAX - Solihull MBC - C
BROADBAND - Upload Max 1000Mbps
Download Max 1000Mbps
MOBILE - Three O2 Vodaphone
EPC - D - 65
PARKING - For at least 2 Cars
FLOODRISK - Very Low
SERVICES - Mains
COVENANTS - N/A

WAGON LANE

Offers in the region of £260,000

Nestled in Wagon Lane, Solihull, this delightful semi-detached house is a gem waiting to be discovered. Boasting a warm and inviting ambiance, this property is perfect for those looking to step onto the property ladder. Don't miss the opportunity to make this charming semi-detached house your own.

FEATURES

- Fabulous First Time Buyer Home
- Tastefully Decorated Throughout
- Open Plan Living/Dining Room/Kitchen
- Principal Double Bedroom
- Second Good Sized Double Bedroom
- Modern Family Bathroom
- Driveway Parking for Two Vehicles
- Private Rear Garden
- Excellent Location

Are you an investor interested in expanding your portfolio?

Call 0121 775 0101 to provide your investment criteria for alerts.



SCAN TO VIEW OUR WEEKLY FILMS & SUBSCRIBE

Sneak Peeks

Every week, we unveil "Sneak Peeks," a feature showcasing exclusive properties before they hit Rightmove and other platforms.

The Landlord Club

Join our Landlord Club for weekly updates on legislation, market trends, and our Letting Director's 'Investment Pick of the Week' for optimal ROI.

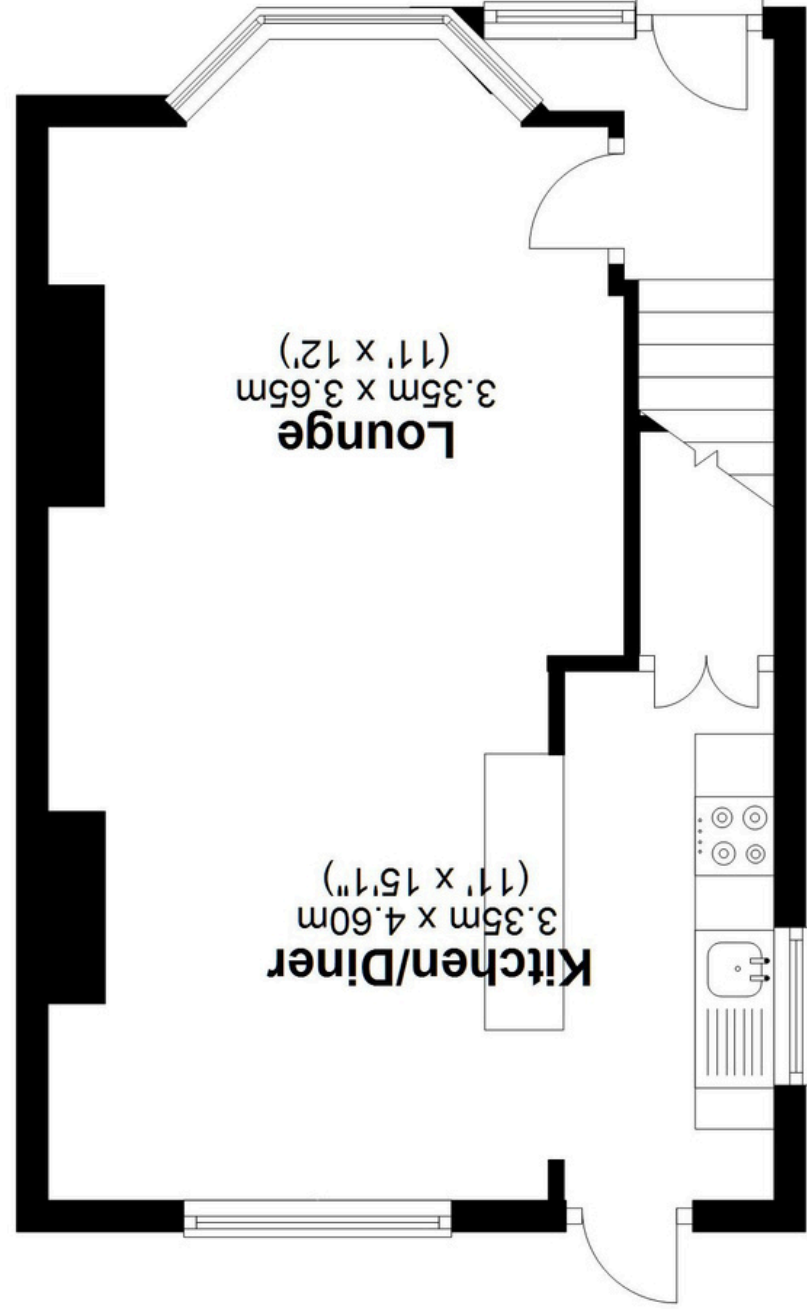
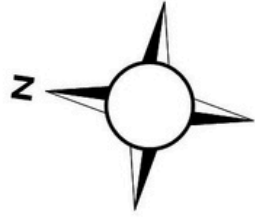
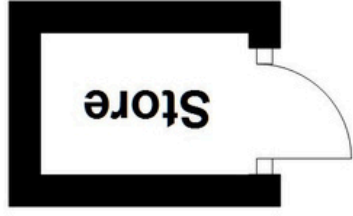
HTSPMD

Tune into 'How's The Solihull Property Market Dom' weekly for a quick, insightful snapshot of the market.

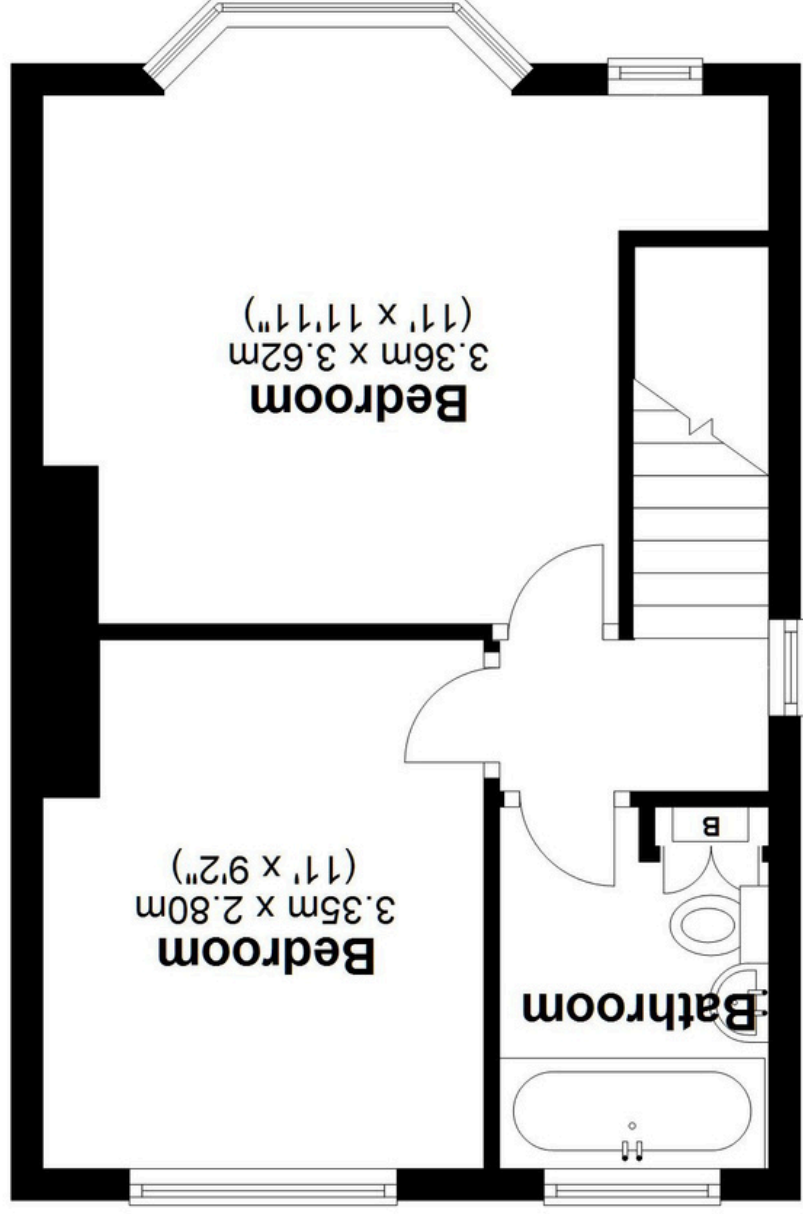
The Mortgage Update

Get weekly insights and the best deals with our Mortgage Update, your shortcut to navigating the complex mortgage landscape confidently.

Ground Floor
Main area: approx. 32.5 sq. metres (349.4 sq. feet)
Plus outbuildings, approx. 1.2 sq. metres (12.8 sq. feet)



First Floor
Approx. 31.5 sq. metres (339.4 sq. feet)



Main area: Approx. 64.0 sq. metres (688.9 sq. feet)
Plus outbuildings, approx. 1.2 sq. metres (12.8 sq. feet)

This floor plan is for illustration purposes only, this is not intended to be a measured/scaled survey or comply with RICS guidelines. All measurements (including total floor area) openings, orientation and floor area are approximate. No details are guaranteed, they cannot be relied upon for any purpose and do not form part of any agreement. A party must rely upon its own inspection(s). No responsibility is taken for any error, omission, or mis-statement.
Plan produced using PlanUp.