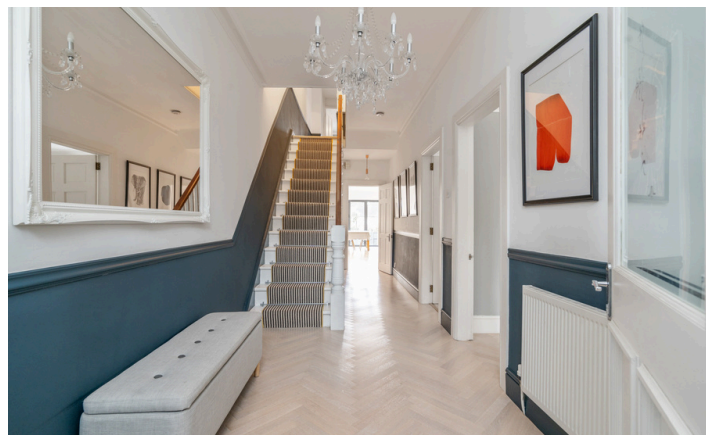


Need a Mortgage in principle to make offers? Call us now for quick assistance!
0121 775 0101



Do you need to sell? Start your journey now! Call us we can help.
0121 775 0101



SCAN FOR MORE INFO
SIZE - 1621 Sq Ft
TENURE - Freehold
COUNCIL TAX - Solihull MBC - E
BROADBAND - Upload Max 1000Mbps
Download Max 1000Mbps
MOBILE - EE O2
EPC - D - 61
PARKING - For 1 Car
FLOODRISK - Very Low
SERVICES - Mains
COVENANTS - N/A

RICHMOND ROAD

Asking Price £500,000

Nestled on Richmond Road is this Victorian mid-terraced family home, a true gem waiting to be discovered. Built in the 1900's, this property exudes character and charm, boasting original features such as high ceilings, fireplaces and sash windows that blend seamlessly with modern touches.

FEATURES

- Beautiful Victorian Mid Terraced Family Home
- Tastefully Presented Throughout
- Two Large Reception Rooms
- Stunning Kitchen/Breakfast Room with Bi-Fold Doors
- Two Generously Sized Double Bedrooms with Fitted Wardrobes
- Third Good Sized Third and Single Fourth Bedroom
- Four Piece Family Bathroom
- Rear Garden with Wrap Around Decked Area
- Driveway Parking
- Conveniently Located for Local Amenities & Olton Train Station

Are you an investor interested in expanding your portfolio?

Call 0121 775 0101 to provide your investment criteria for alerts.



SCAN TO VIEW OUR WEEKLY FILMS & SUBSCRIBE

Sneak Peeks

Every week, we unveil "Sneak Peeks," a feature showcasing exclusive properties before they hit Rightmove and other platforms.

The Landlord Club

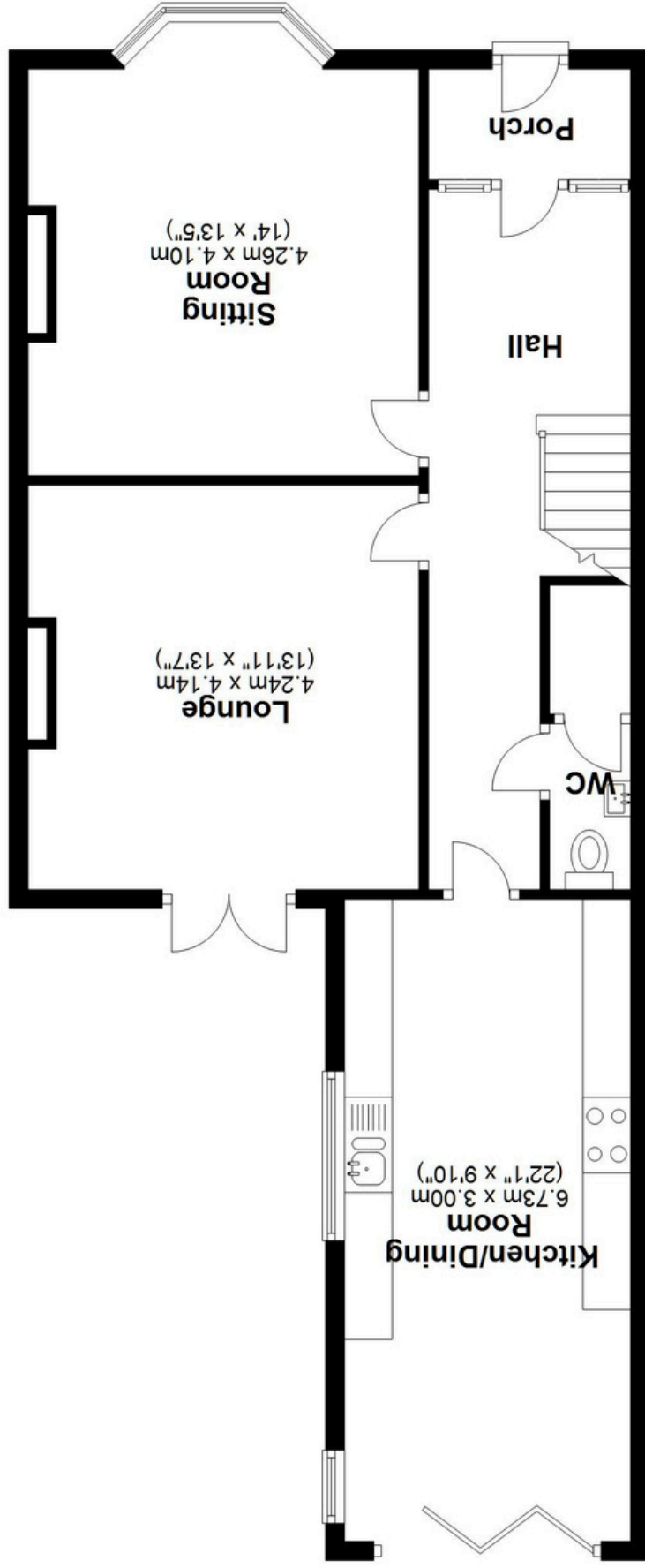
Join our Landlord Club for weekly updates on legislation, market trends, and our Letting Director's 'Investment Pick of the Week' for optimal ROI.

HTSPMD

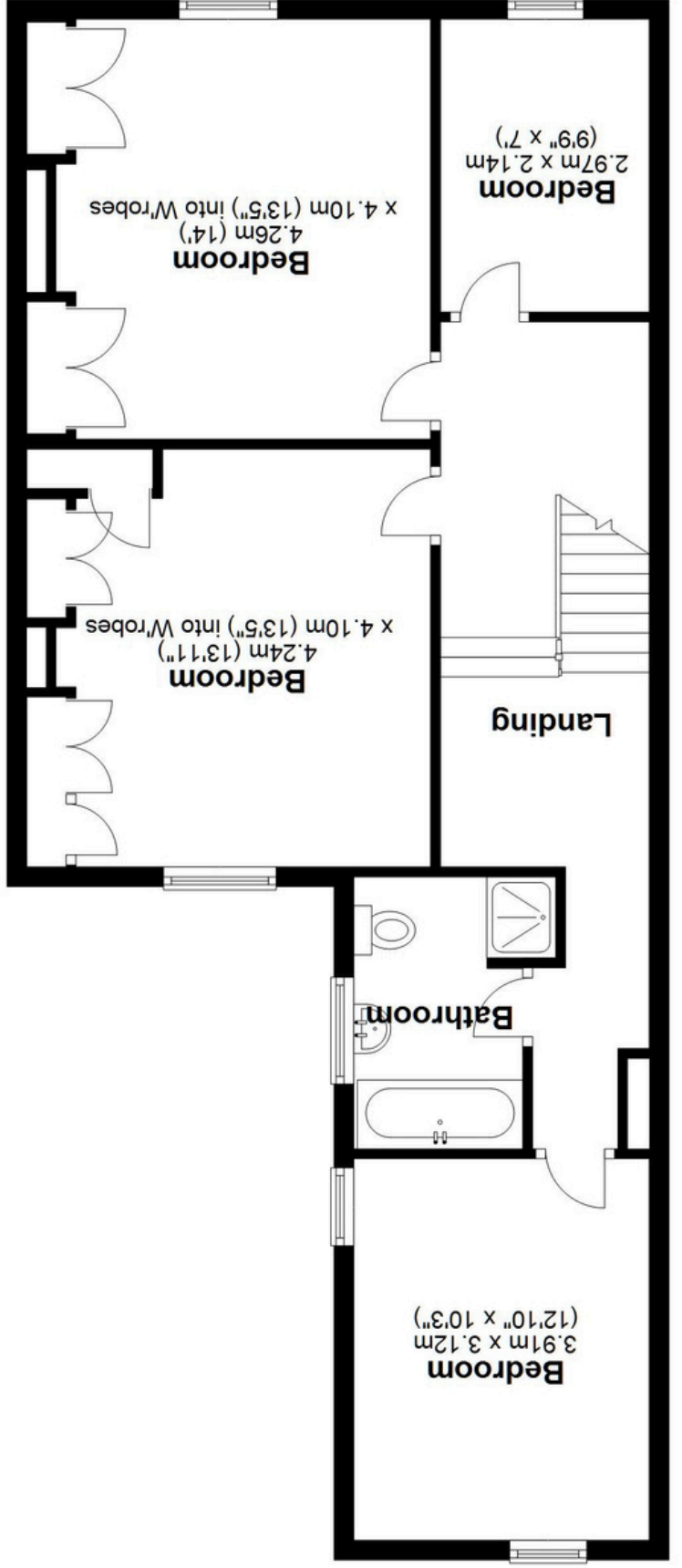
Tune into 'How's The Solihull Property Market Dom' weekly for a quick, insightful snapshot of the market.

The Mortgage Update

Get weekly insights and the best deals with our Mortgage Update, your shortcut to navigating the complex mortgage landscape confidently.



Ground Floor
Approx. 75.2 sq. metres (809.0 sq. feet)



First Floor
Approx. 75.5 sq. metres (812.6 sq. feet)

Total area: approx. 150.6 sq. metres (1621.5 sq. feet)

This floor plan is for illustration purposes only, this is not intended to be a measured/scaled survey or comply with RICS guidelines. All measurements (including total floor area) openings, orientation and floor area are approximate. No details are guaranteed, they cannot be relied upon for any purpose and do not form part of any agreement. A party must rely upon its own inspection(s). No responsibility is taken for any error, omission, or mis-statement.
Plan produced using PlanUp.