

Need a Mortgage in principle to make offers? Call us now for quick assistance!  
0121 775 0101



Do you need to sell? Start your journey now! Call us we can help.  
0121 775 0101



## WHITCHURCH LANE

Offers in the region of £850,000

### SCAN FOR MORE INFO

**SIZE** - 2483 Sq Ft  
**TENURE** - Freehold  
**COUNCIL TAX** - Solihull MBC - G  
**BROADBAND** - Upload Max 220Mbps  
 Download Max 1000Mbps  
**MOBILE** - EE Three O2 Vodafone  
**EPC** - C - 76  
**PARKING** - For at least 2 Cars on Drive  
**FLOODRISK** - Very Low  
**SERVICES** - Mains  
**COVENANTS** - N/A

Are you an investor interested in expanding your portfolio?

Call 0121 775 0101 to provide your investment criteria for alerts.

Nestled in the charming Whitchurch Lane on the periphery of Dickens Heath, this executive detached family home is a true gem waiting to be discovered. Boasting 2 reception rooms, 5 bedrooms and 3 bathrooms, this stunning property offers ample space for a growing family. With no upward chain, this property is ready for you to move straight in and start creating lasting memories. Don't miss the opportunity to make this exquisite detached house your new home.

### FEATURES

- Executive Detached Family Residence
- Dining Room, Lounge & Study
- Fitted Breakfast Kitchen with Family Area
- Principal Bedroom with Juliet Balcon & En-Suite Bathroom
- Bedroom 2 with En-Suite Shower Room
- Three Further Double Bedrooms
- Family Bathroom
- Private Rear Garden with Own Access to Canal Beyond
- Double Garage & Driveway Parking
- No Upward Chain

### Sneak Peeks

Every week, we unveil "Sneak Peeks," a feature showcasing exclusive properties before they hit Rightmove and other platforms.

### The Landlord Club

Join our Landlord Club for weekly updates on legislation, market trends, and our Letting Director's 'Investment Pick of the Week' for optimal ROI.

### HTSPMD

Tune into 'How's The Solihull Property Market Dom' weekly for a quick, insightful snapshot of the market.

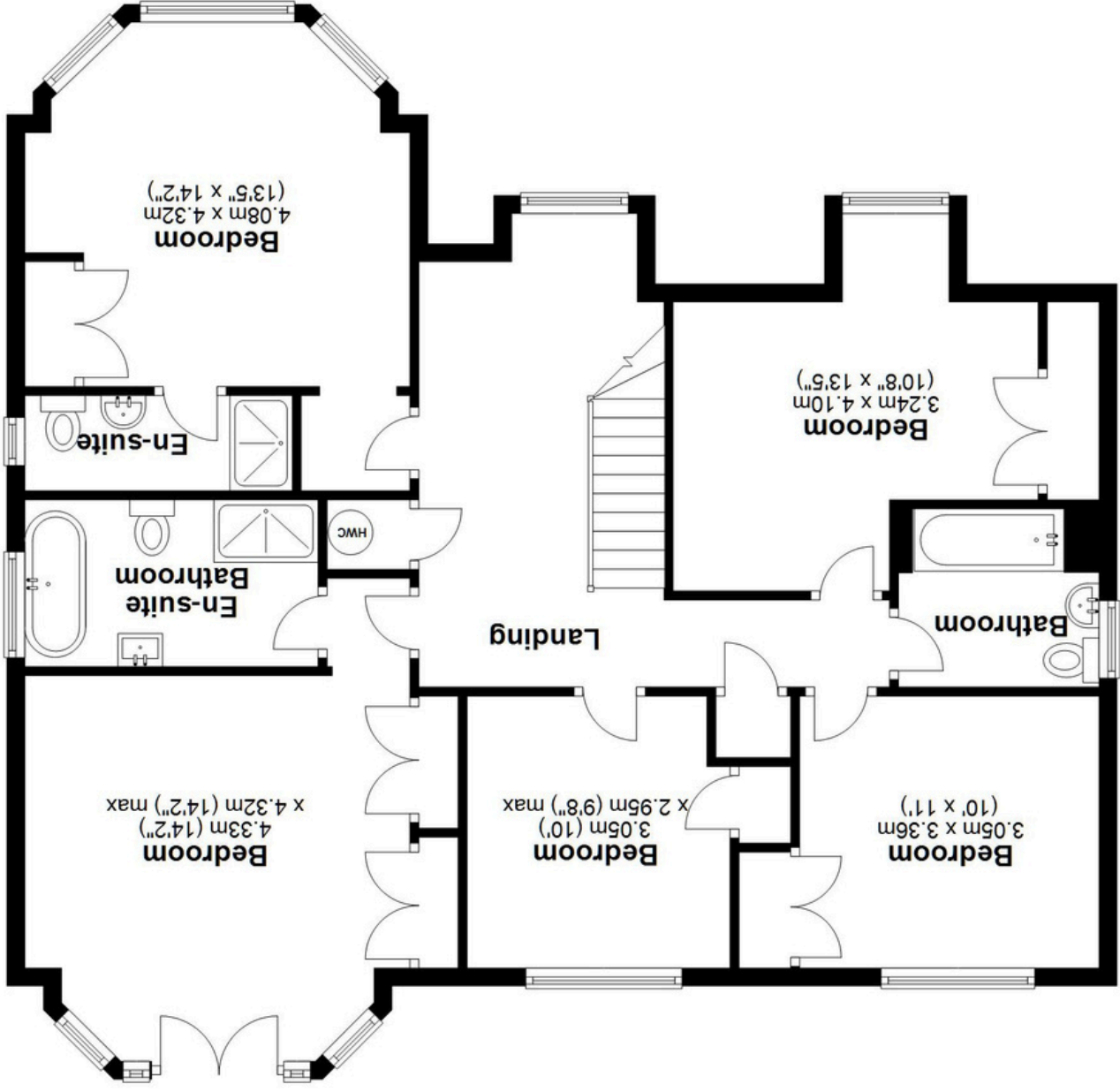
### The Mortgage Update

Get weekly insights and the best deals with our Mortgage Update, your shortcut to navigating the complex mortgage landscape confidently.



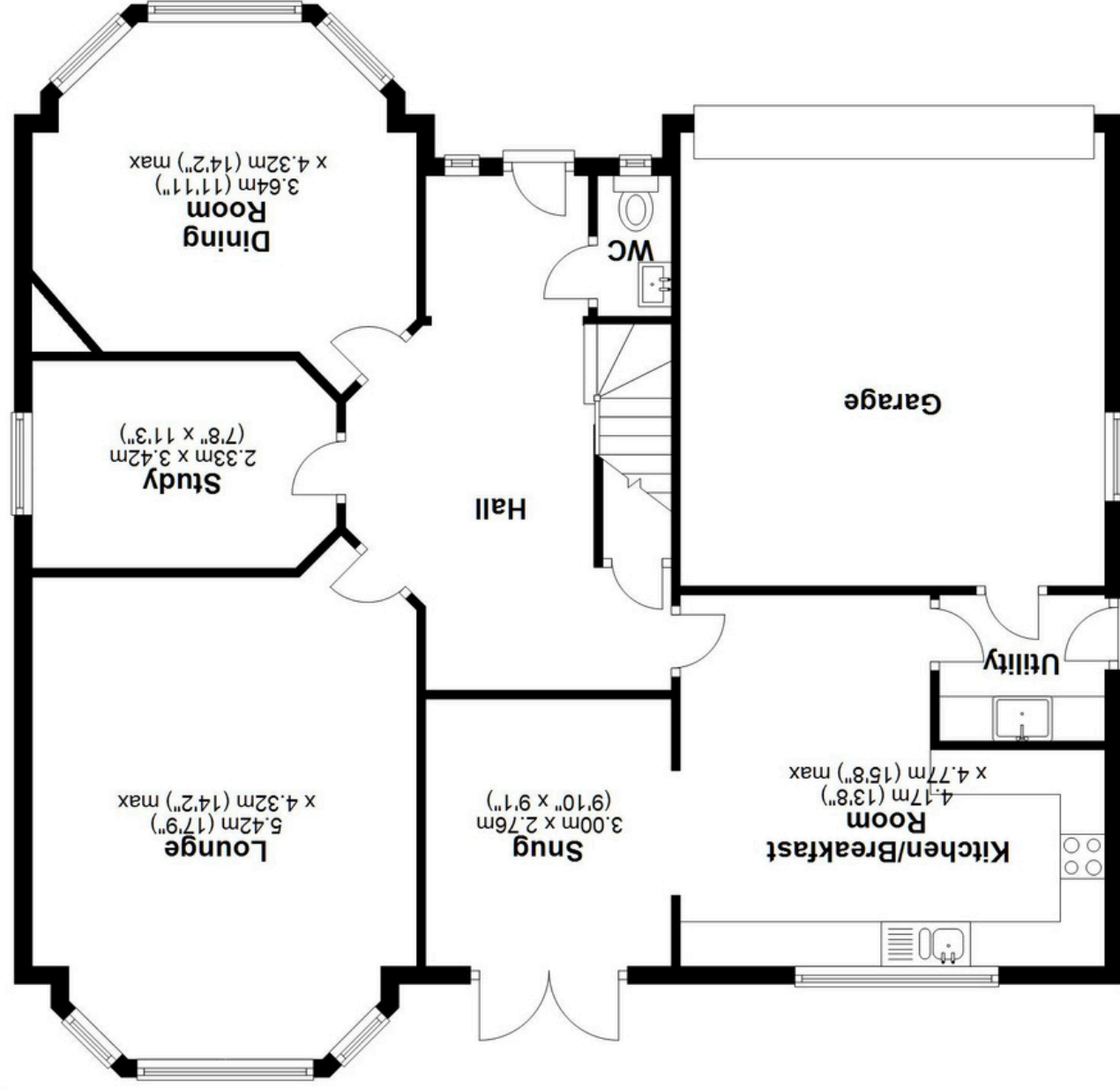
SCAN TO VIEW OUR WEEKLY FILMS & SUBSCRIBE





Approx. 108.1 sq. metres (1163.4 sq. feet)

**First Floor**



Approx. 118.5 sq. metres (1275.2 sq. feet)

**Ground Floor**



Total area: approx. 226.6 sq. metres (2438.6 sq. feet)

This floor plan is for illustration purposes only, this is not intended to be a measured/scaled survey or comply with RICS guidelines. All measurements (including total floor area) openings, orientation and floor area are approximate. No details are guaranteed, they cannot be relied upon for any purpose and do not form part of any agreement. A party must rely upon its own inspection(s). No responsibility is taken for any error, omission, or mis-statement.  
Plan produced using PlanUp.