

Need a Mortgage in principle to make offers? Call us now for quick assistance!
0121 775 0101



Do you need to sell? Start your journey now! Call us we can help.
01564 777 314



36 Hanbury Road, Dorridge

Offers Over £900,000



SCAN FOR MORE INFO
SIZE - 2228 Sq Ft
TENURE - Freehold
COUNCIL TAX - Solihull Metropolitan Borough Council F
BROADBAND - Upload Max 1000 Mbps
 Download Max 1000 Mbps
MOBILE EE, O2
EPC - D
PARKING - Driveway and Garage
FLOODRISK - No Risk
SERVICES - Mains
COVENANTS - N/A

Are you an investor interested in expanding your portfolio?

Call 01564 777 314 to provide your investment criteria for alerts.

A beautifully presented five-bedroom detached home, fully modernised throughout. Featuring an open plan kitchen/diner, conservatory, and a private garden with patio area, this property also includes a double garage and is perfect for family living.

FEATURES

- Five Bedroom Detached House
- Open-Plan Kitchen/Diner
- Lounge with Bay Window
- Conservatory with Garden Views
- Utility Room and Downstairs WC
- Family Bathroom on First Floor
- Principal Bedroom with En-Suite
- Private Garden with Patio Area
- Double Garage

Sneak Peeks

Every week, we unveil "Sneak Peeks," a feature showcasing exclusive properties before they hit Rightmove and other platforms.

The Landlord Club

Join our Landlord Club for weekly updates on legislation, market trends, and our Letting Director's 'Investment Pick of the Week' for optimal ROI.

HTSPMD

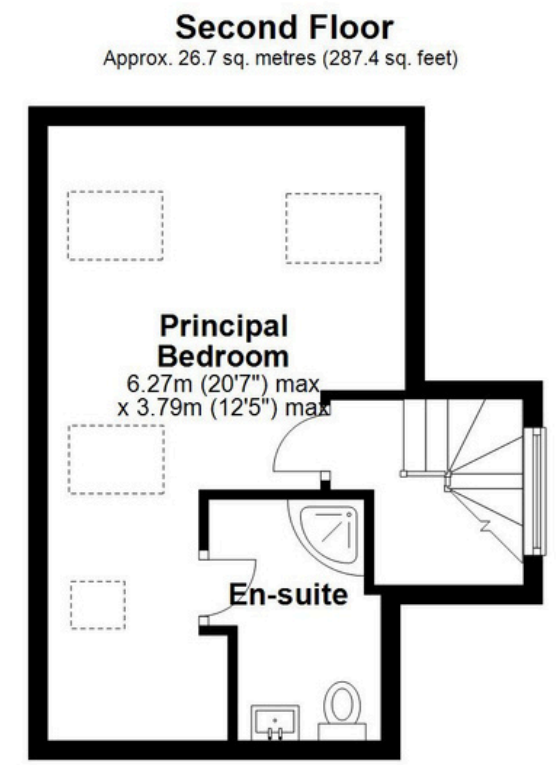
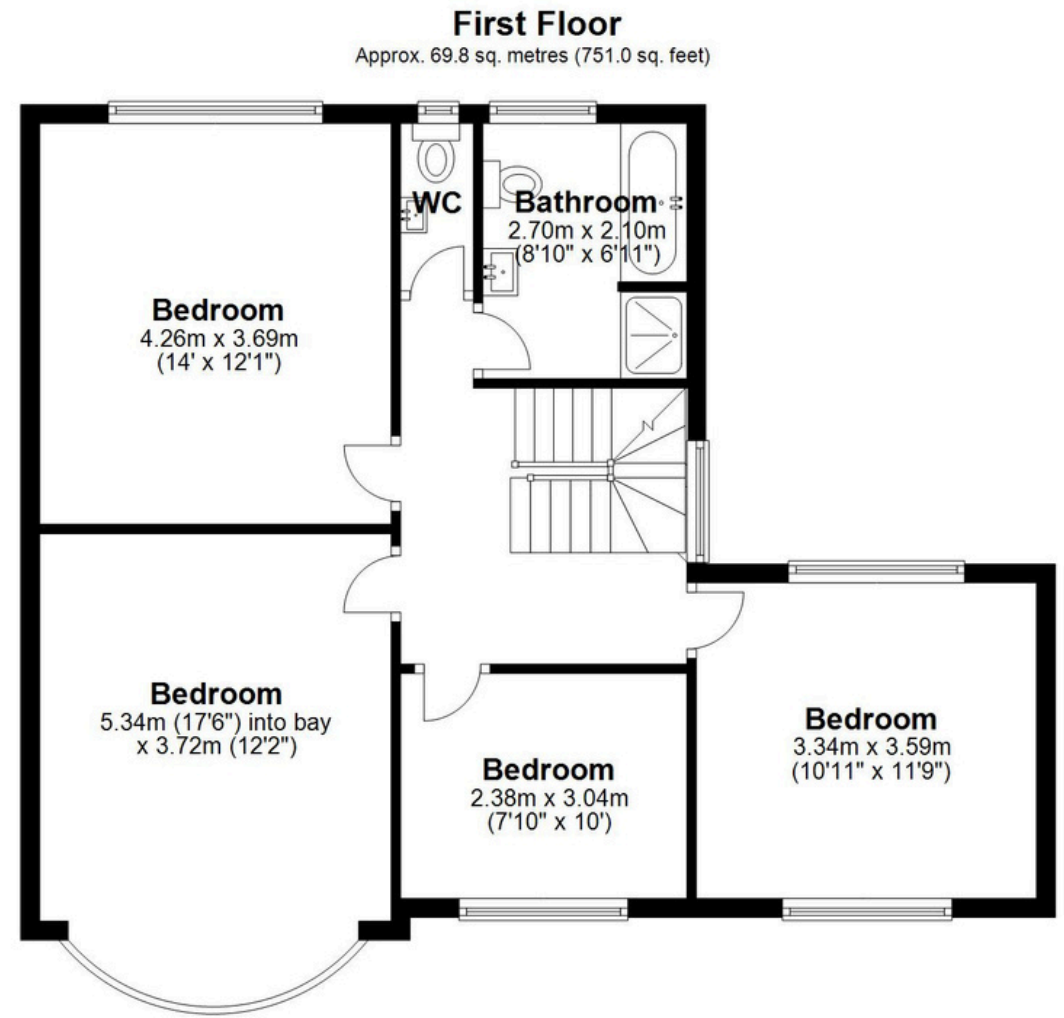
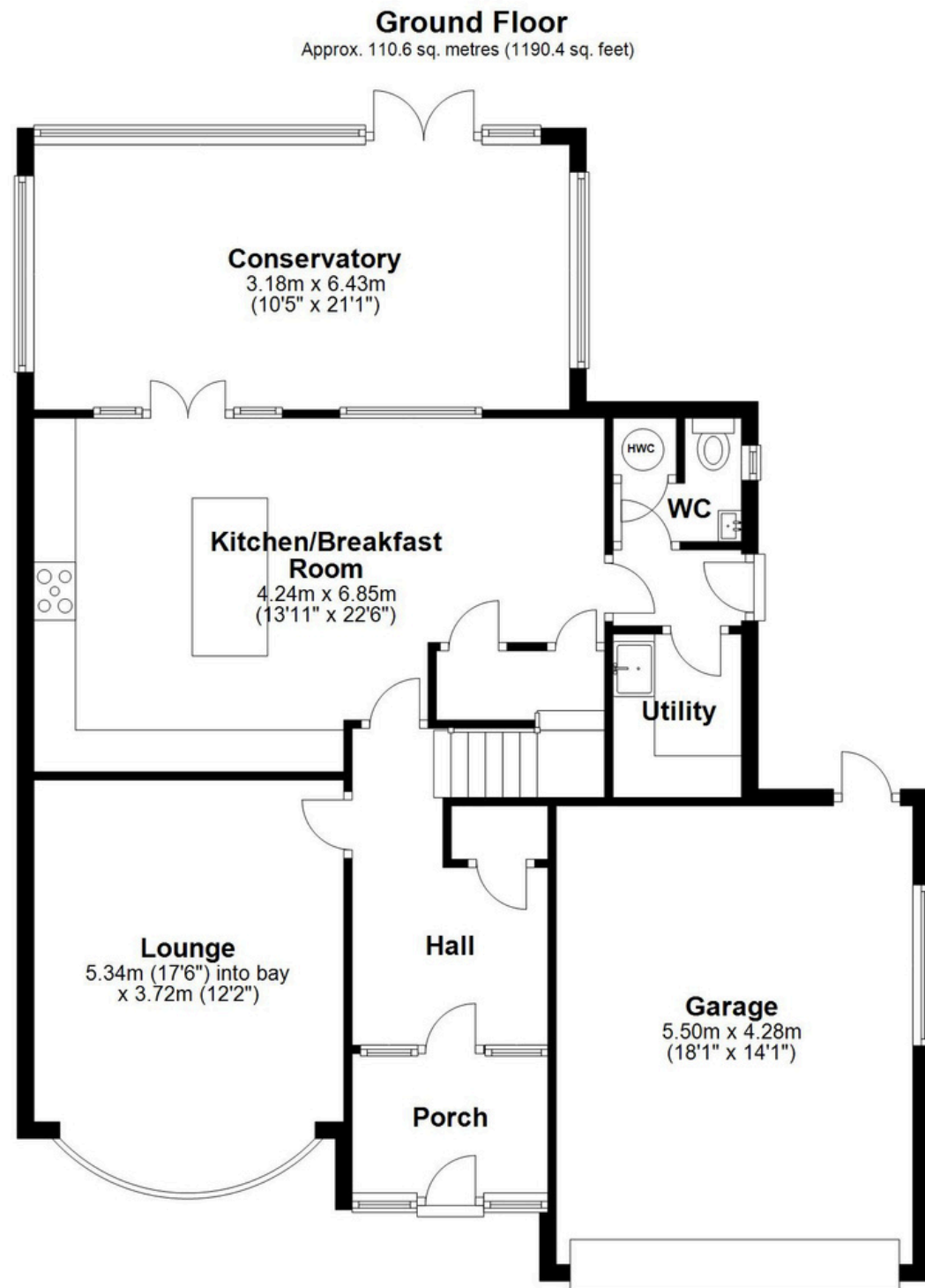
Tune into 'How's The Solihull Property Market Dom' weekly for a quick, insightful snapshot of the market.

The Mortgage Update

Get weekly insights and the best deals with our Mortgage Update, your shortcut to navigating the complex mortgage landscape confidently.



SCAN TO VIEW OUR WEEKLY FILMS & SUBSCRIBE



Total area: approx. 207.1 sq. metres (2228.7 sq. feet)

This floor plan is for illustration purposes only, this is not intended to be a measured/scaled survey or comply with RICS guidelines. All measurements (including total floor area) openings, orientation and floor area are approximate. No details are guaranteed, they cannot be relied upon for any purpose and do not form part of any agreement. A party must rely upon its own inspection(s). No responsibility is taken for any error, omission, or mis-statement.
Plan produced using PlanUp.