

Need a Mortgage in principle
to make offers? Call us now
for quick assistance!
0121 775 0101



Do you need to sell?
Start your journey now!
Call us we can help.
0121 775 0101



CASTLE LANE

Offers in the region of £350,000

SCAN FOR MORE INFO
SIZE - 1457 Sq Ft
TENURE - Freehold
COUNCIL TAX - Solihull MBC - D
BROADBAND - Upload Max 1000Mbps
Download Max 1000Mbps
MOBILE - EE Three O2
EPC - E - 49
PARKING - On Road Parking
FLOODRISK - Very Low
SERVICES - Mains
COVENANTS - N/A

Are you an investor
interested in expanding your
portfolio?

Call **0121 775 0101** to provide your
investment criteria for alerts.

This semi-detached house offers a wonderful opportunity to create a warm and inviting family home. Boasting 4 bedrooms and 2 bathrooms this property is brimming with potential. Embrace the opportunity to transform this house into your dream home, where every corner is filled with the potential for new beginnings and cherished moments.

FEATURES

- An Opportunity to Create a Family Home
- Fantastic Potential
- Two Reception Rooms
- Modern Kitchen with Appliances
- Ground Floor Shower Room
- Two First Floor Double Bedrooms
- Family Bathroom
- Two Further Double Bedrooms to the Second Floor
- Long, Private Mature Rear Garden
- Excellent Location



SCAN TO **VIEW** OUR
WEEKLY FILMS &
SUBSCRIBE

Sneak Peeks

Every week, we unveil "Sneak Peeks," a feature showcasing exclusive properties before they hit Rightmove and other platforms.

The Landlord Club

Join our Landlord Club for weekly updates on legislation, market trends, and our Letting Director's 'Investment Pick of the Week' for optimal ROI.

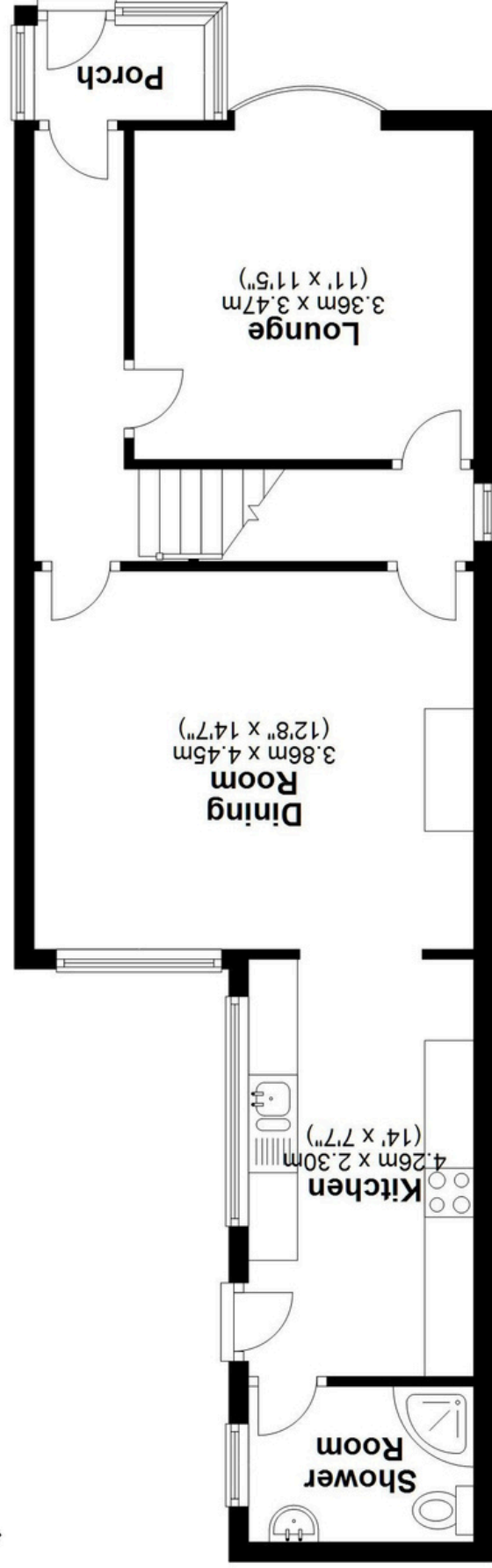
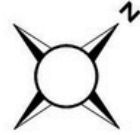
HTSPMD

Tune into 'How's The Solihull Property Market Dom' weekly for a quick, insightful snapshot of the market.

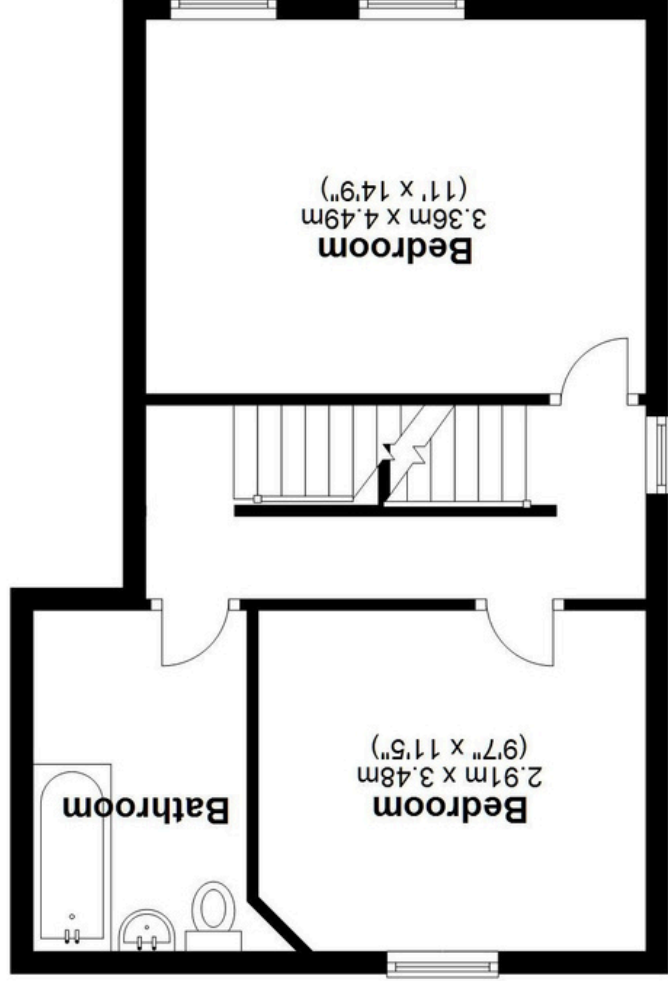
The Mortgage Update

Get weekly insights and the best deals with our Mortgage Update, your shortcut to navigating the complex mortgage landscape confidently.

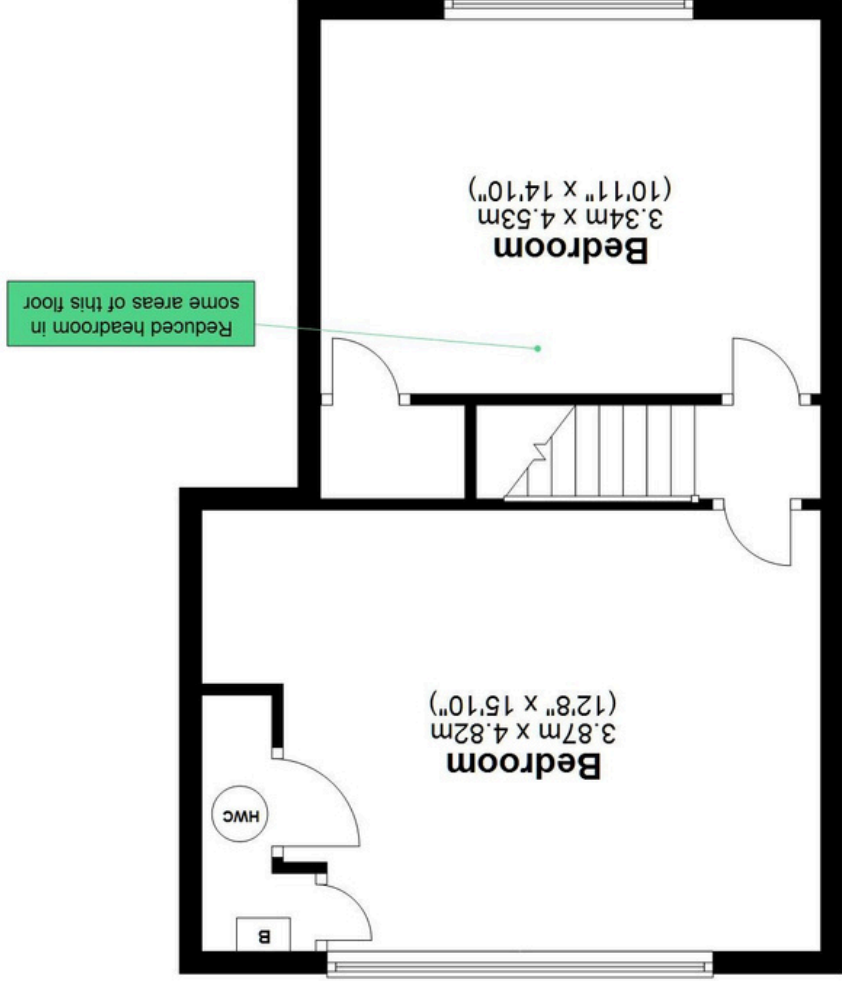
Ground Floor
Approx. 53.3 sq. metres (574.2 sq. feet)



First Floor
Approx. 40.8 sq. metres (438.6 sq. feet)



Second Floor
Approx. 41.3 sq. metres (444.5 sq. feet)



Total area: approx. 135.4 sq. metres (1457.4 sq. feet)

This floor plan is for illustration purposes only, this is not intended to be a measured/scaled survey or comply with RICS guidelines. All measurements (including total floor area) openings, orientation and floor area are approximate. No details are guaranteed, they cannot be relied upon for any purpose and do not form part of any agreement. A party must rely upon its own inspection (s). No responsibility is taken for any error, omission, or mis-statement.

Plan produced using PlanUp.