

Need a Mortgage in principle to make offers? Call us now for quick assistance!
0121 775 0101



Do you need to sell? Start your journey now! Call us we can help.
0121 775 0101



SCAN FOR MORE INFO
SIZE - 1643 Sq Ft
TENURE - Freehold
COUNCIL TAX - Solihull MBC - F
BROADBAND - Upload Max 1000Mbps
 Download Max 1000Mbps
MOBILE - EE Three O2 Vodafone
EPC - E - 54
PARKING - For at least 4 Cars
FLOODRISK - Very Low
SERVICES - Mains
COVENANTS - N/A

WESTBOURNE ROAD

Offers in the region of £625,000

This stunning detached house from the 1920s is a true gem waiting to be discovered. The property exudes character while offering a modern touch that is simply irresistible. If you are looking for a home that combines style and functionality, this handsome detached property on Westbourne Road is a must-see.

FEATURES

- Extended Traditional Detached Residence
- Spacious Accommodation
- Superb Breakfast Kitchen with Dining Area & Utility Room
- Two Reception Rooms
- Two First Floor Double Bedrooms & Third Single/Study
- Modern Family Bathroom with Separate W.C.
- Stunning Second Floor Principal Bedroom
- Extensive Block Paved Driveway & Single Garage
- Private Rear Garden
- Excellent Location

Are you an investor interested in expanding your portfolio?

Call 0121 775 0101 to provide your investment criteria for alerts.



SCAN TO VIEW OUR WEEKLY FILMS & SUBSCRIBE

Sneak Peeks

Every week, we unveil "Sneak Peeks," a feature showcasing exclusive properties before they hit Rightmove and other platforms.

The Landlord Club

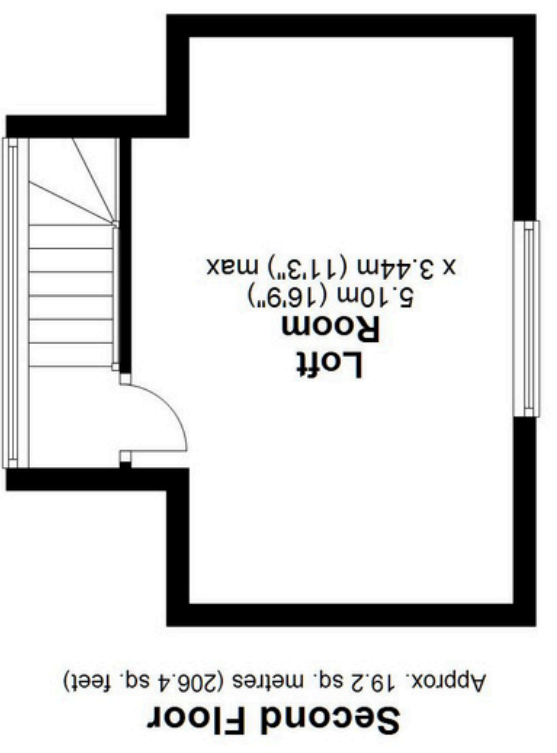
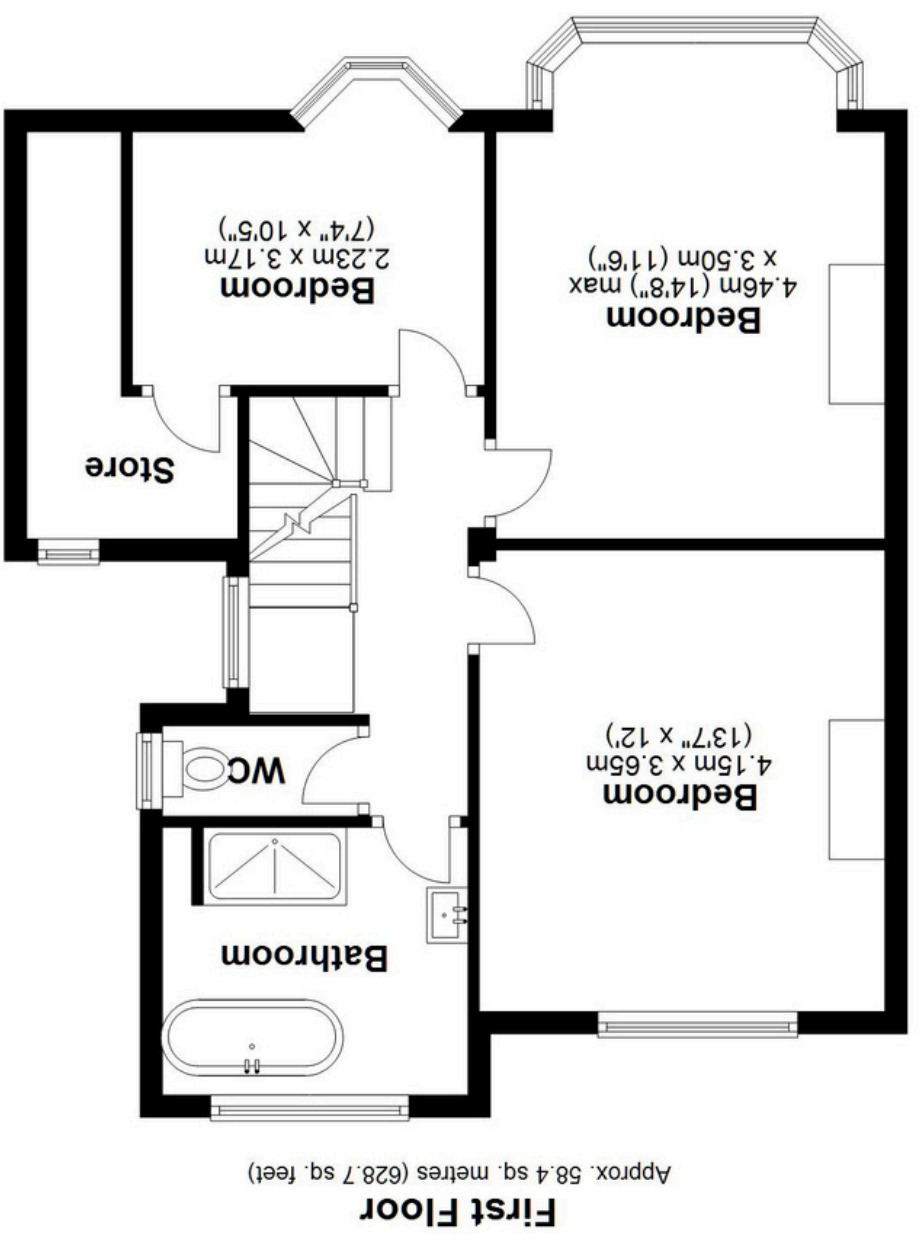
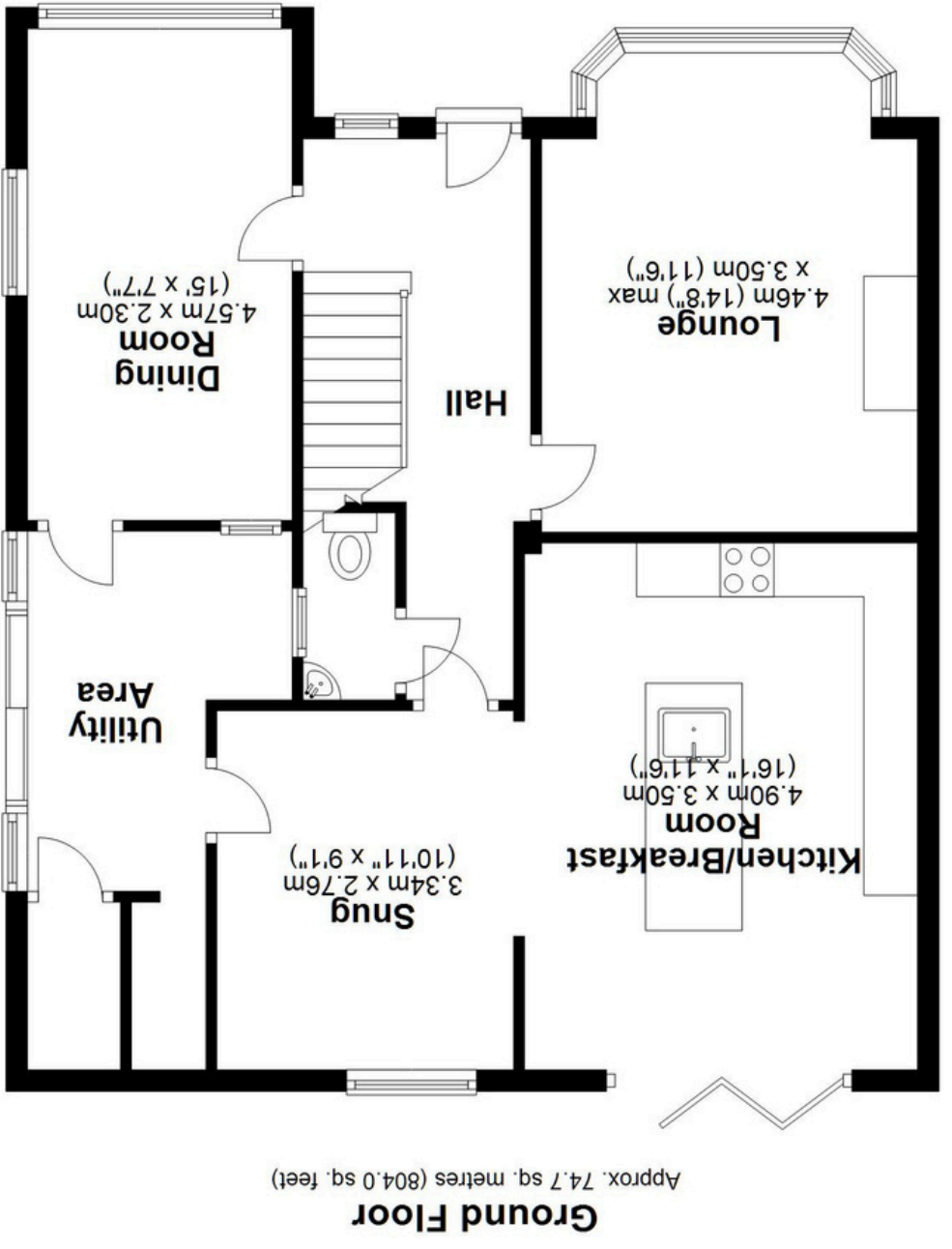
Join our Landlord Club for weekly updates on legislation, market trends, and our Letting Director's 'Investment Pick of the Week' for optimal ROI.

HTSPMD

Tune into 'How's The Solihull Property Market Dom' weekly for a quick, insightful snapshot of the market.

The Mortgage Update

Get weekly insights and the best deals with our Mortgage Update, your shortcut to navigating the complex mortgage landscape confidently.



Total area: approx. 152.3 sq. metres (1639.0 sq. feet)

This floor plan is for illustration purposes only, this is not intended to be a measured/scaled survey or comply with RICS guidelines. All measurements (including total floor area) openings, orientation and floor area are approximate. No details are guaranteed, they cannot be relied upon for any purpose and do not form part of any agreement. A party must rely upon its own inspection (s). No responsibility is taken for any error, omission, or mis-statement.
Plan produced using PlanUp.