

Need a Mortgage in principle to make offers? Call us now for quick assistance!
0121 775 0101



Do you need to sell? Start your journey now! Call us we can help.
01564 777 314



SCAN FOR MORE INFO
SIZE - 2332 Sq Ft
TENURE - Freehold
COUNCIL TAX - Solihull Metropolitan Borough Council G
BROADBAND - Upload Max 1000 Mbps
Download Max 1000 Mbps
MOBILE - EE Three O2 Vodafone
EPC - B
PARKING - Garage and Driveway Parking
FLOODRISK - No Risk
SERVICES - Mains
COVENANTS - N/A

Are you an investor interested in expanding your portfolio?

Call 01564 777 314 to provide your investment criteria for alerts.

1 St Phillips Grove, Bentley Heath

Offers Over £900,000

1 St Phillips Grove is a modern five-bedroom detached house featuring a single-story extension and a loft conversion. This spacious family home is ready to move into, offering five double bedrooms, four bathrooms, and an easy-maintenance private garden. Situated within the Arden Academy catchment area and close to scenic country walks, this property is also sold with no upward chain.

FEATURES

- Extended Five-Bedroom Detached House
- Spacious Through Lounge with Log Burner
- Newly Fitted Kitchen with Open Living Space
- Separate Dining Room
- Five Double Bedrooms
- Four Bathrooms, Including Two En Suites
- Loft Conversion with Walk-In Wardrobe
- Easy-To-Maintain Private Garden
- Detached Double Garage
- Arden Academy Catchment
- No Upward Chain

Sneak Peeks

Every week, we unveil "Sneak Peeks," a feature showcasing exclusive properties before they hit Rightmove and other platforms.

The Landlord Club

Join our Landlord Club for weekly updates on legislation, market trends, and our Letting Director's 'Investment Pick of the Week' for optimal ROI.

HTSPMD

Tune into 'How's The Solihull Property Market Dom' weekly for a quick, insightful snapshot of the market.

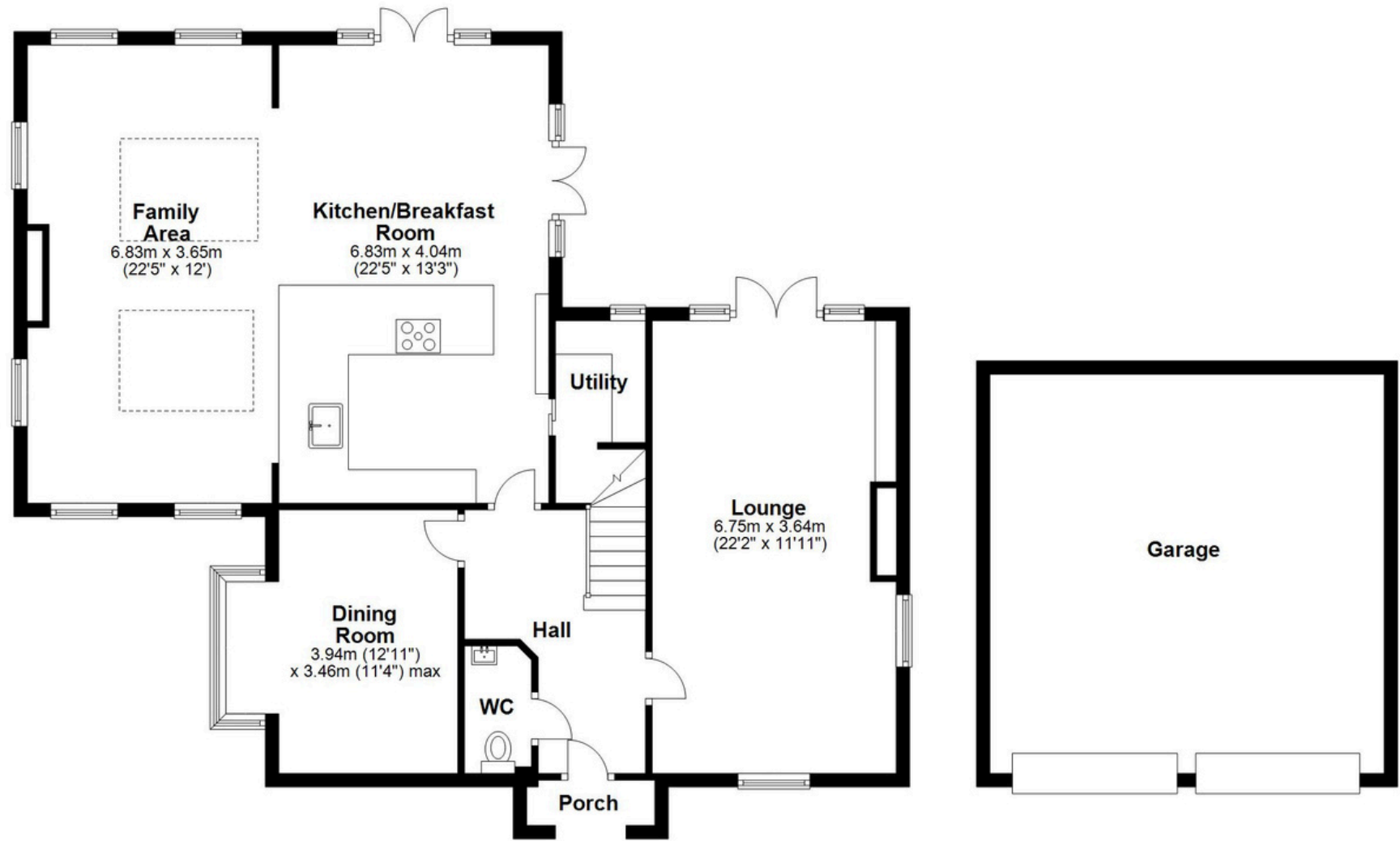
The Mortgage Update

Get weekly insights and the best deals with our Mortgage Update, your shortcut to navigating the complex mortgage landscape confidently.

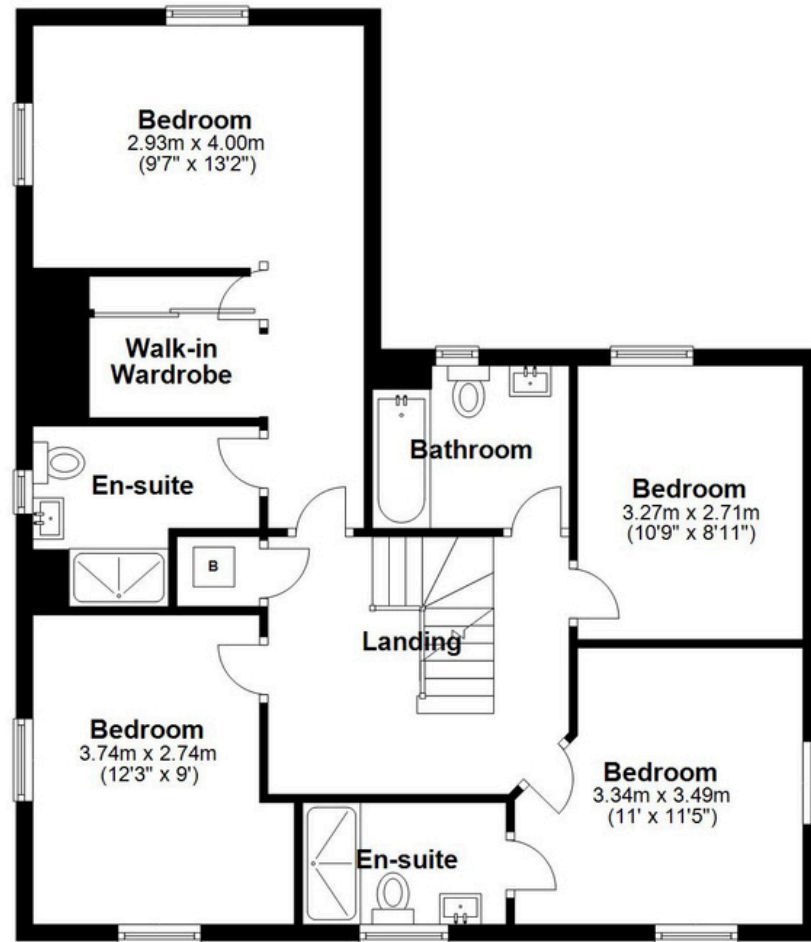


SCAN TO VIEW OUR WEEKLY FILMS & SUBSCRIBE

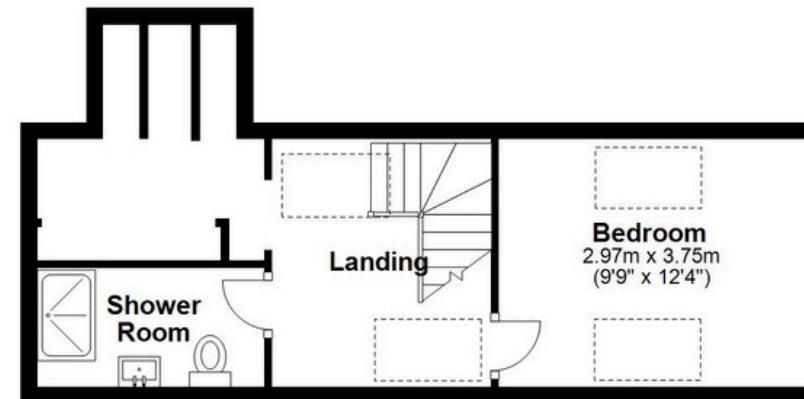
Ground Floor
Approx. 107.6 sq. metres (1157.9 sq. feet)



First Floor
Approx. 79.1 sq. metres (851.3 sq. feet)



Second Floor
Approx. 30.1 sq. metres (323.6 sq. feet)



Total area: approx. 216.7 sq. metres (2332.8 sq. feet)

This floor plan is for illustration purposes only, this is not intended to be a measured/scaled survey or comply with RICS guidelines. All measurements (including total floor area) openings, orientation and floor area are approximate. No details are guaranteed, they cannot be relied upon for any purpose and do not form part of any agreement. A party must rely upon its own inspection(s). No responsibility is taken for any error, omission, or mis-statement.
Plan produced using PlanUp.