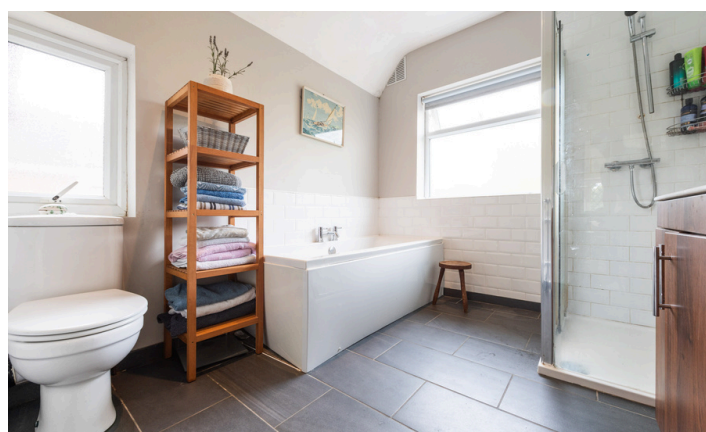


Need a Mortgage in principle to make offers? Call us now for quick assistance!
0121 775 0101



Do you need to sell? Start your journey now! Call us we can help.
0121 775 0101



WARWICK ROAD

Offers Over £600,000



SCAN FOR MORE INFO

SIZE - 1548 Sq Ft
TENURE - Freehold
COUNCIL TAX - Solihull MBC - E
BROADBAND - Upload Max 1000MBps
Download Max 1000MBps
MOBILE - O2 Vodafone
EPC - TD - 59
PARKING - For at least 6 Cars
FLOODRISK - Very Low
SERVICES - Mains
COVENANTS - N/A

Are you an investor interested in expanding your portfolio?

Call 0121 775 0101 to provide your investment criteria for alerts.

Welcome to this charming semi-detached house located on Warwick Road in Solihull. This property boasts 2 reception rooms and 4 bedrooms, offering ample space for comfortable living. Don't miss the opportunity to make this house your home and enjoy the wonderful lifestyle it has to offer.

FEATURES

- Traditional Semi-Detached Family Home
- Two Large Reception Rooms
- Stunning Kitchen/Dining/Family Room with Bi-Fold Doors
- Converted Garage into a Utility, Guest Cloakroom & Store Room
- Two Good Sized Double Bedrooms
- Third Double Bedroom & Fourth Single
- Four Piece Family Bathroom
- Private Rear Garden
- Large Driveway
- Walking Distance to Solihull Town Centre

Sneak Peeks

Every week, we unveil "Sneak Peeks," a feature showcasing exclusive properties before they hit Rightmove and other platforms.

The Landlord Club

Join our Landlord Club for weekly updates on legislation, market trends, and our Letting Director's 'Investment Pick of the Week' for optimal ROI.

HTSPMD

Tune into 'How's The Solihull Property Market Dom' weekly for a quick, insightful snapshot of the market.

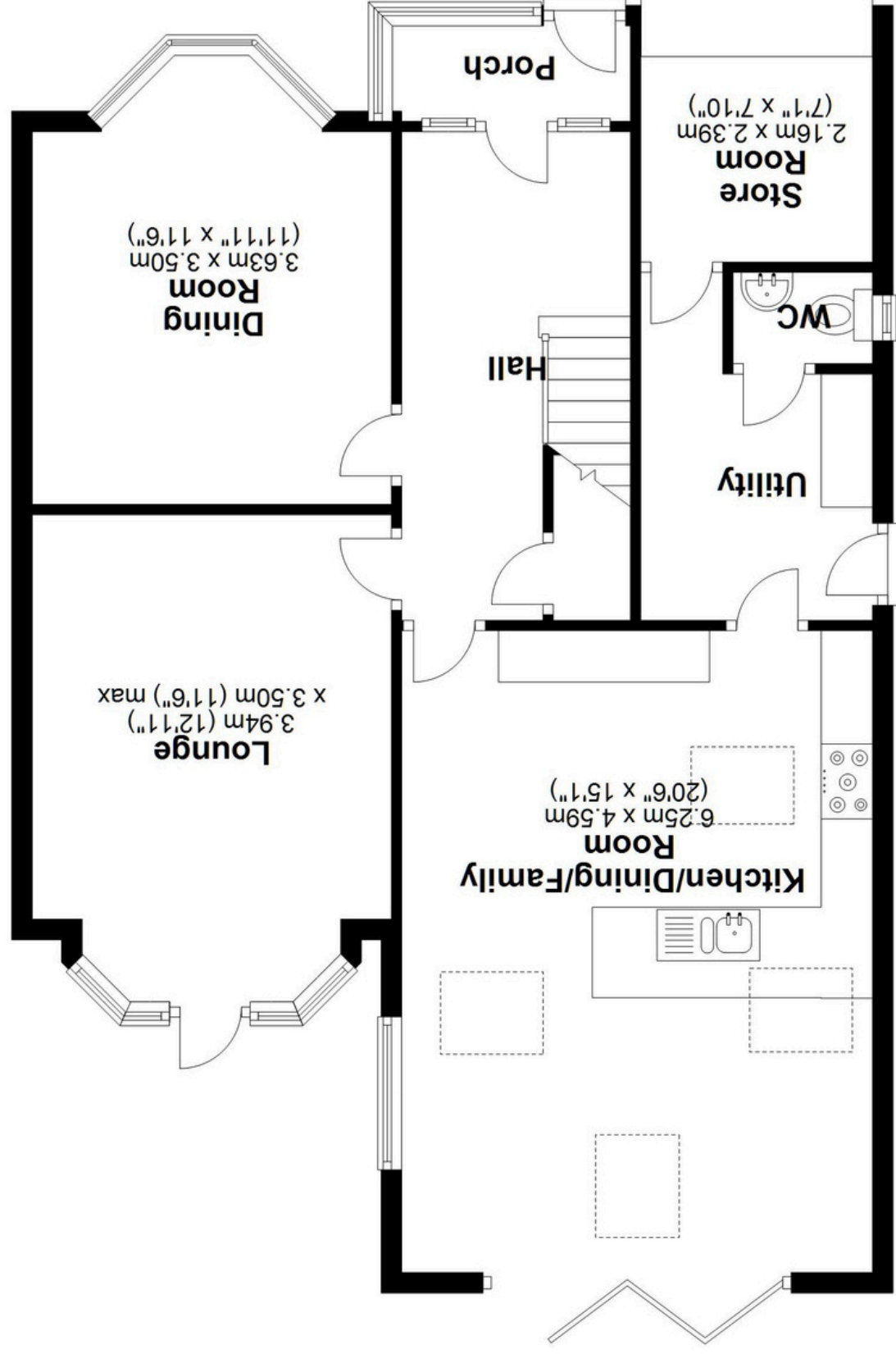
The Mortgage Update

Get weekly insights and the best deals with our Mortgage Update, your shortcut to navigating the complex mortgage landscape confidently.

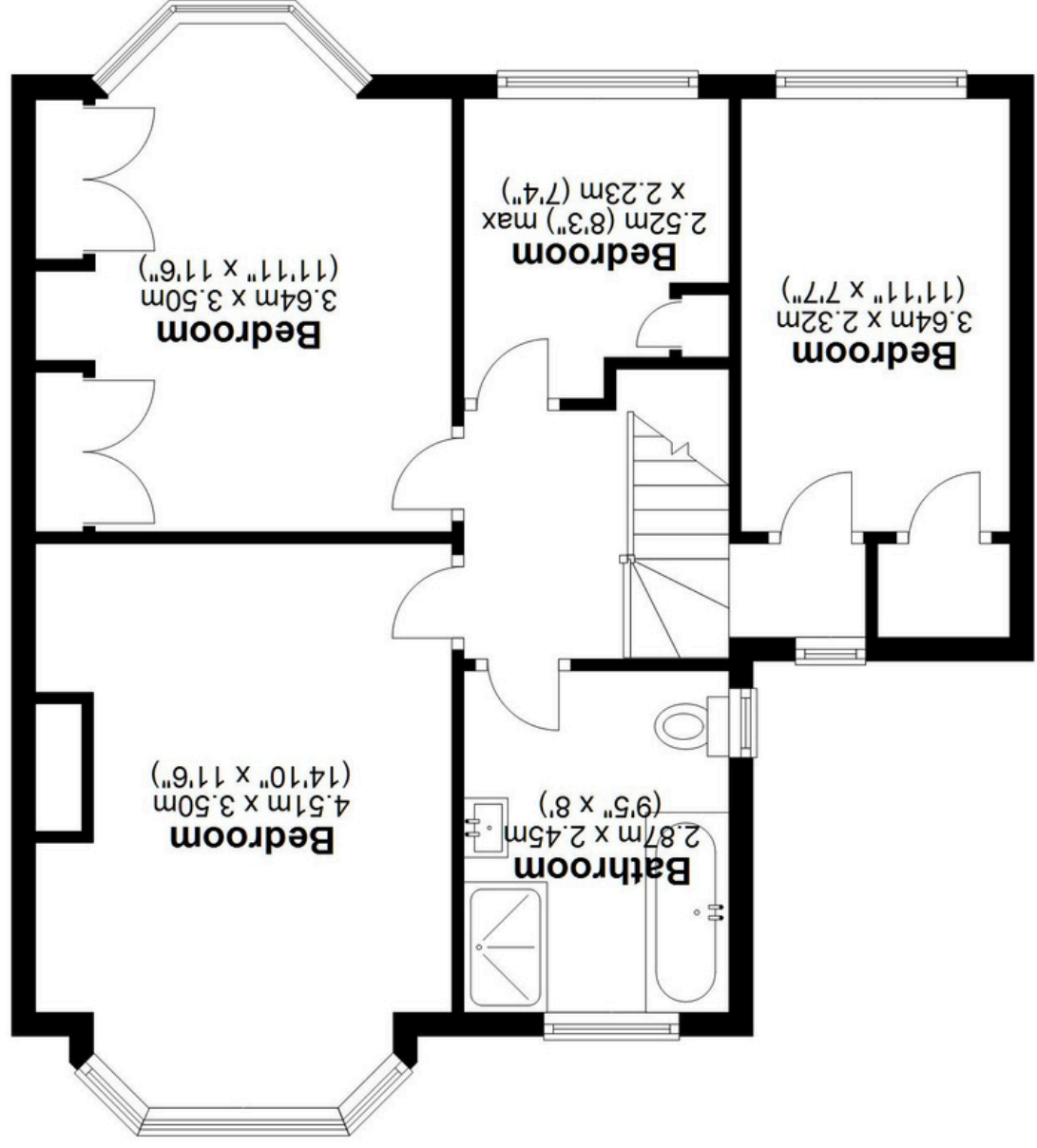


SCAN TO VIEW OUR WEEKLY FILMS & SUBSCRIBE

Ground Floor
Approx. 85.5 sq. metres (919.9 sq. feet)



First Floor
Approx. 58.4 sq. metres (628.6 sq. feet)



Total area: approx. 143.9 sq. metres (1548.5 sq. feet)

This floor plan is for illustration purposes only, this is not intended to be a measured/scaled survey or comply with RICS guidelines. All measurements (including total floor area) openings, orientation and floor area are approximate. No details are guaranteed, they cannot be relied upon for any purpose and do not form part of any agreement. A party must rely upon its own inspection(s). No responsibility is taken for any error, omission, or mis-statement.

Plan produced using PlanUp.

