

Need a Mortgage in principle
to make offers? Call us now
for quick assistance!
0121 775 0101



Do you need to sell?
Start your journey now!
Call us we can help.
01564 777 314



Ivy Lodge, 25 Fetherston Grange Lapworth, B94

SCAN FOR MORE INFO
SIZE - 1068 Sq Ft
TENURE - Leasehold
COUNCIL TAX - Warwick District Council D
BROADBAND - Upload Max 20 Mbps
Download Max 80 Mbps
MOBILE - EE, Vodafone
EPC - D
PARKING - Garage and Driveway Parking
FLOODRISK - No Rise
SERVICES - Mains
COVENANTS - N/A

Nestled in an idyllic rural setting, Fetherston Grange is a charming country house conversion surrounded by mature, established grounds with breathtaking countryside views. This superb three-bedroom property offers versatile living space spread across three floors, making it an ideal choice for those looking to downsize or seeking a lock-up-and-leave option.

FEATURES

- Three Bedroom Apartment
- Part of the Beautiful Fetherston Grange
- Breakfast Kitchen and Living Room
- Principal Bedroom with En Suite
- Garage and Parking
- Superb Communal Gardens
- With Arden Academy Catchment Area

Are you an investor
interested in expanding your
portfolio?

**Call 01564 777 314 to provide your
investment criteria for alerts.**



SCAN TO **VIEW OUR
WEEKLY FILMS &
SUBSCRIBE**

Sneak Peeks

Every week, we unveil "Sneak Peeks," a feature showcasing exclusive properties before they hit Rightmove and other platforms.

The Landlord Club

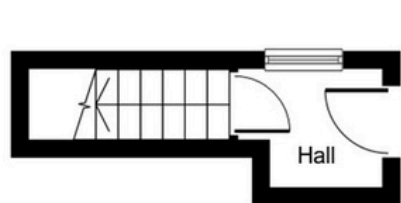
Join our Landlord Club for weekly updates on legislation, market trends, and our Letting Director's 'Investment Pick of the Week' for optimal ROI.

HTSPMD

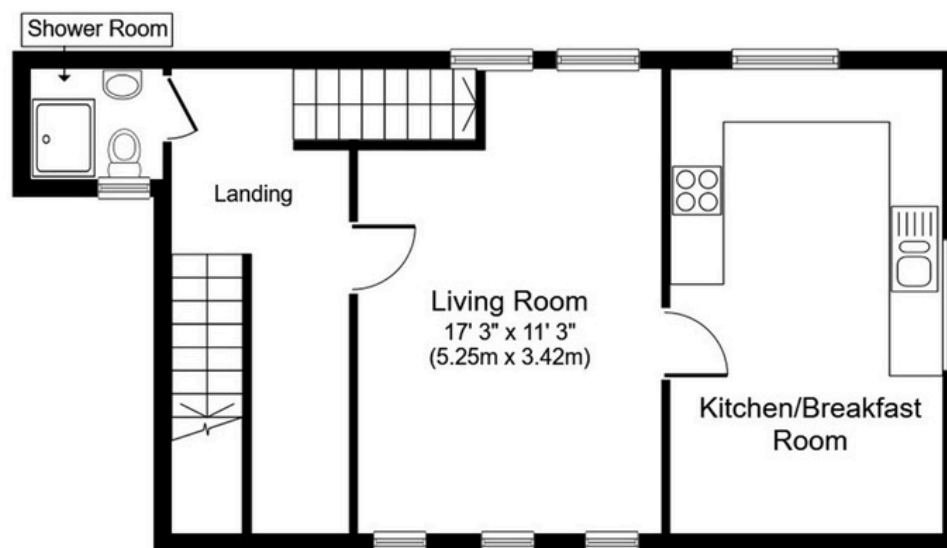
Tune into 'How's The Solihull Property Market Dom' weekly for a quick, insightful snapshot of the market.

The Mortgage Update

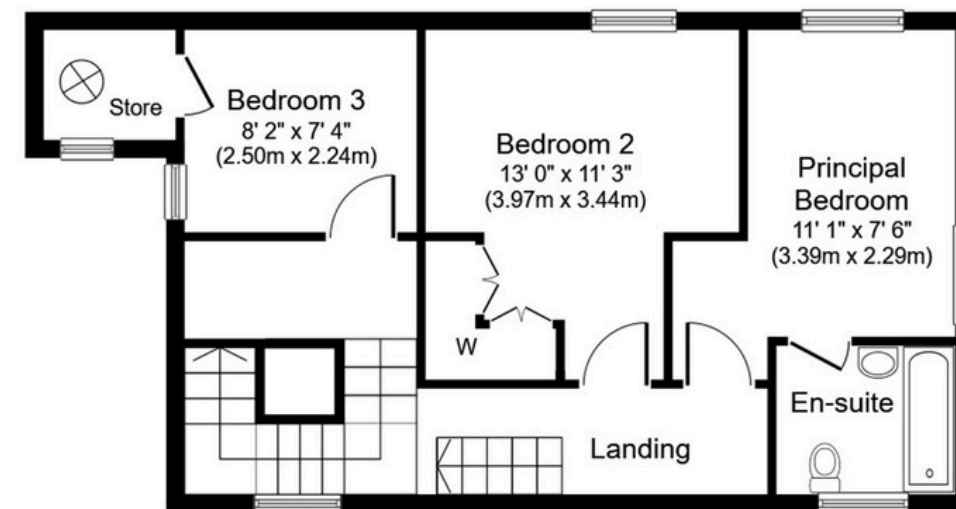
Get weekly insights and the best deals with our Mortgage Update, your shortcut to navigating the complex mortgage landscape confidently.



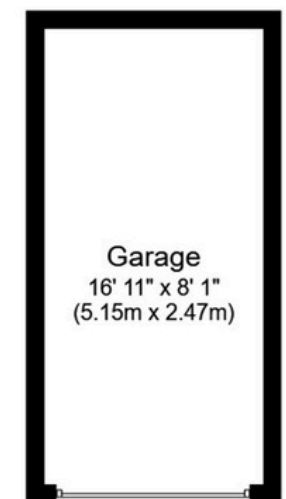
Ground Floor
Approximate Floor Area
42 sq. ft.
(3.9 sq. m.)



First Floor
Approximate Floor Area
513 sq. ft.
(47.6 sq. m.)



Second Floor
Approximate Floor Area
513 sq. ft.
(47.6 sq. m.)



Garage
Approximate Floor Are
137 sq. ft.
(12.7 sq. m.)

Whilst every attempt has been made to ensure the accuracy of the floor plan contained here, measurements of doors, windows, rooms and any other items are approximate and no responsibility is taken for any error, omission, or mis-statement. The measurements should not be relied upon for valuation, transaction and/or funding purposes. This plan is for illustrative purposes only and should be used as such by any prospective purchaser or tenant.

The services, systems and appliances shown have not been tested and no guarantee as to their operability or efficiency can be given.

Copyright V360 Ltd 2024 | www.houseviz.com