

Need a Mortgage in principle to make offers? Call us now for quick assistance!  
0121 775 0101



Do you need to sell? Start your journey now! Call us we can help.  
01564 777 314



## Top Lock View, Knowle

Guide Price of £750,000

Rare opportunity to purchase this fantastic three-bedroom dormer property set on Knowle Locks just off Kenilworth Road. With 360-degree views, a beautiful private wooded area, and three double bedrooms, this home is within walking distance of Knowle High Street and is not to be missed!

### FEATURES

- Three Bedroom Detached Dormer Property
- Extended Lounge
- Dining Room
- Kitchen and Utility
- 360 Degree Field Views
- Circa 0.40 plot
- Set on the Knowle Locks
- Walking Distance to Knowle High Street



### SCAN FOR MORE INFO

**SIZE** - 1539 Sq Ft  
**TENURE** - Freehold  
**COUNCIL TAX** - Solihull Metropolitan Borough Council D  
**BROADBAND** - Upload Max 8 Mbps  
Download Max 40 Mbps  
**MOBILE** - EE Three O2 Vodafone  
**EPC** - D  
**PARKING** - Driveway Parking  
**FLOODRISK** - No Risk  
**SERVICES** - Heating is Calor Gas & Sewerage is via a Septic Tank.  
**COVENANTS** - N/A

Are you an investor interested in expanding your portfolio?

Call 01564 777 314 to provide your investment criteria for alerts.



### Sneak Peeks

Every week, we unveil "Sneak Peeks," a feature showcasing exclusive properties before they hit Rightmove and other platforms.

### The Landlord Club

Join our Landlord Club for weekly updates on legislation, market trends, and our Letting Director's 'Investment Pick of the Week' for optimal ROI.

### HTSPMD

Tune into 'How's The Solihull Property Market Dom' weekly for a quick, insightful snapshot of the market.

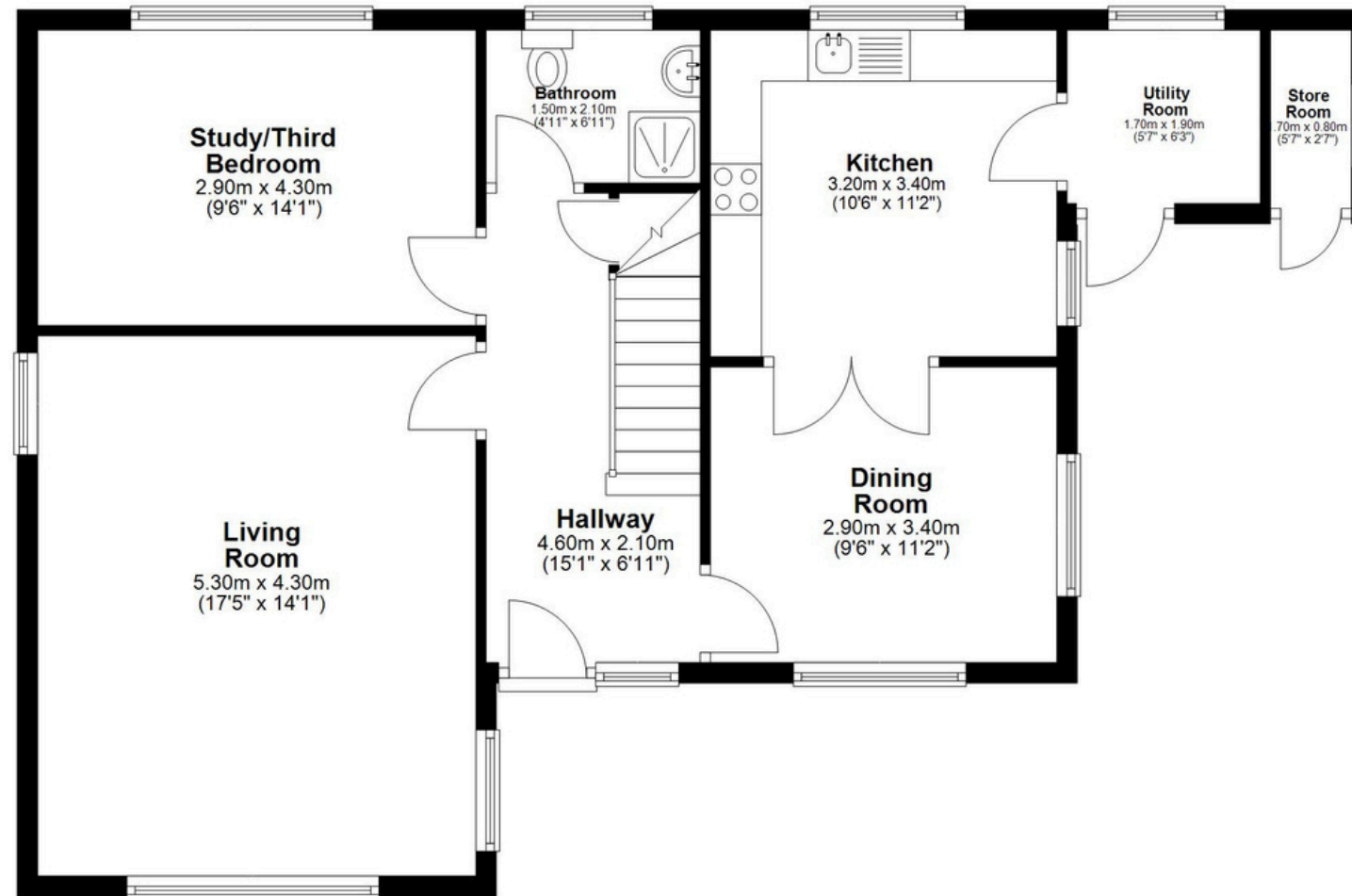
### The Mortgage Update

Get weekly insights and the best deals with our Mortgage Update, your shortcut to navigating the complex mortgage landscape confidently.

SCAN TO VIEW OUR WEEKLY FILMS & SUBSCRIBE

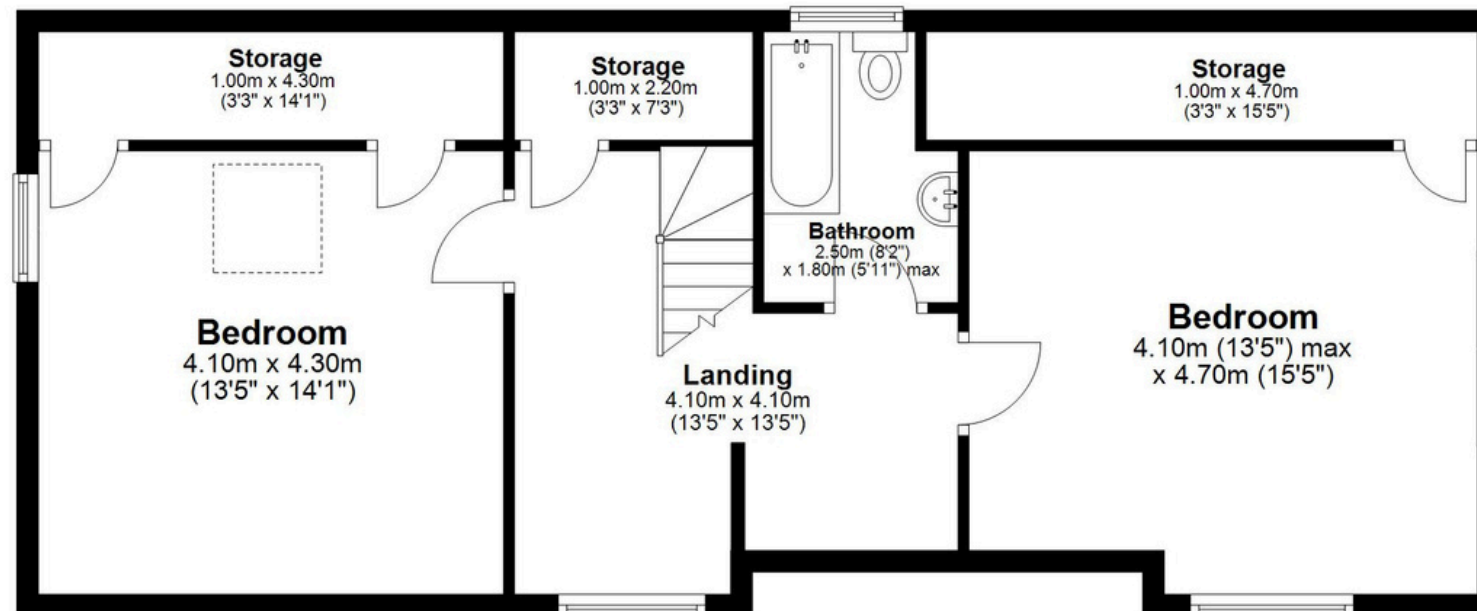
### Ground Floor

Approx. 75.9 sq. metres (817.5 sq. feet)



### First Floor

Approx. 67.1 sq. metres (722.3 sq. feet)



Total area: approx. 143.0 sq. metres (1539.8 sq. feet)

**Top Lock View, Kenilworth Road, Knowle**