

Need a Mortgage in principle to make offers? Call us now for quick assistance!
0121 775 0101



Do you need to sell? Start your journey now! Call us we can help.
01564 777 314



6 The Old School House

Offers Over £425,000

SCAN FOR MORE INFO

SIZE - 905 Sq Ft

TENURE - Leasehold

COUNCIL TAX - Solihull Metropolitan Council D

BROADBAND - Ultra Fast 1000 Mbps
Download Max 1000 Mbps

MOBILE - EE Three O2 Vodaphone

EPC - E

PARKING - Two Spaces

FLOODRISK - No Risk

SERVICES - Mains

COVENANTS - N/A

Are you an investor interested in expanding your portfolio?

Call 01564 777 314 to provide your investment criteria for alerts.

This immaculately presented two-bedroom converted Victorian schoolhouse is set in the heart of Bentley Heath. It features open-plan living, two double bedrooms, and its own private garden, all whilst retaining original Victorian features.

FEATURES

- Converted Victorian Schoolhouse
- Downstairs Shower Room
- Open Plan Living
- Fitted Kitchen
- Two Double Bedrooms
- Private Garden
- Walking Distance to Local Amenities
- NO UPWARD CHAIN

Sneak Peeks

Every week, we unveil "Sneak Peeks," a feature showcasing exclusive properties before they hit Rightmove and other platforms.

HTSPMD

Tune into 'How's The Solihull Property Market Dom' weekly for a quick, insightful snapshot of the market.

The Landlord Club

Join our Landlord Club for weekly updates on legislation, market trends, and our Letting Director's 'Investment Pick of the Week' for optimal ROI.

The Mortgage Update

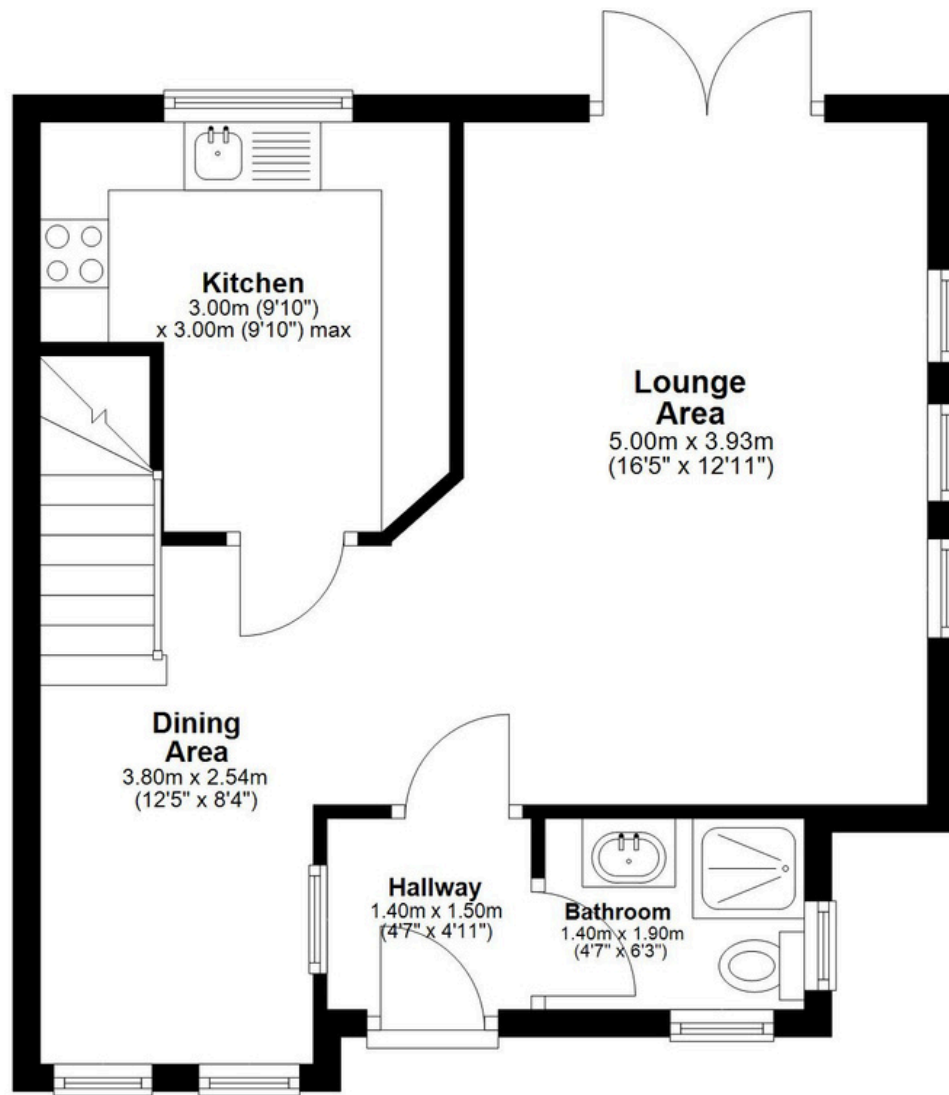
Get weekly insights and the best deals with our Mortgage Update, your shortcut to navigating the complex mortgage landscape confidently.



SCAN TO VIEW OUR WEEKLY FILMS & SUBSCRIBE

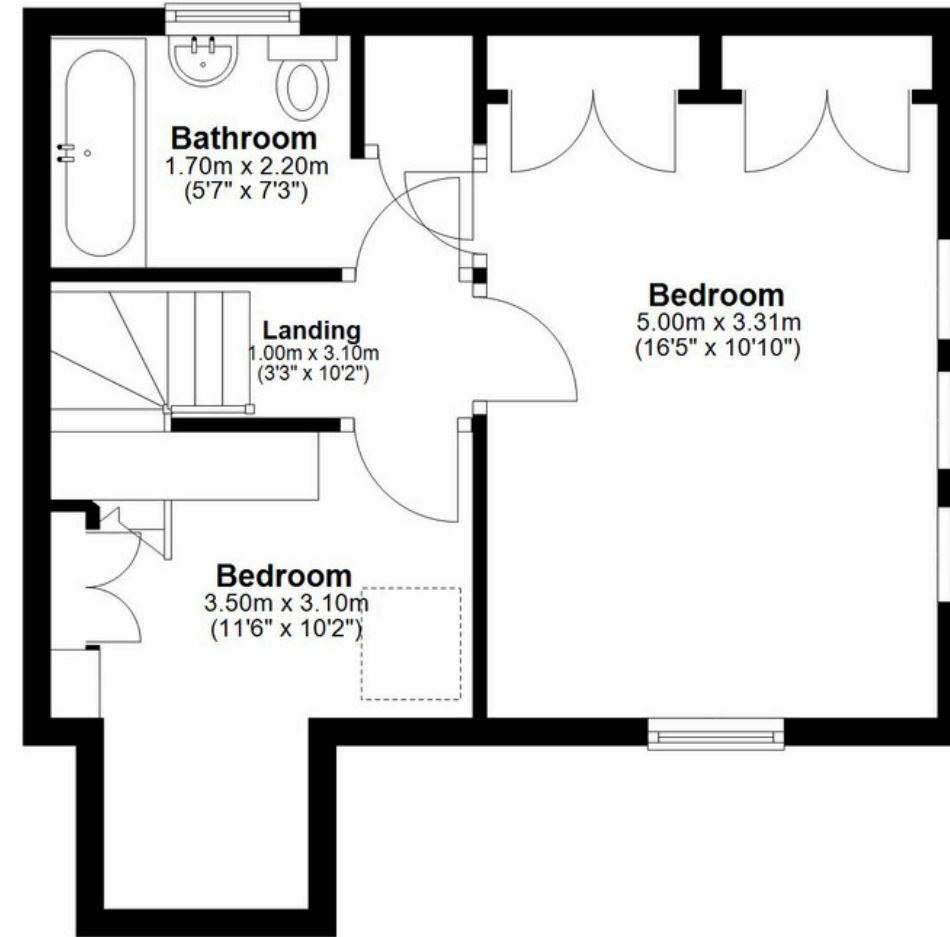
Ground Floor

Approx. 41.8 sq. metres (450.1 sq. feet)



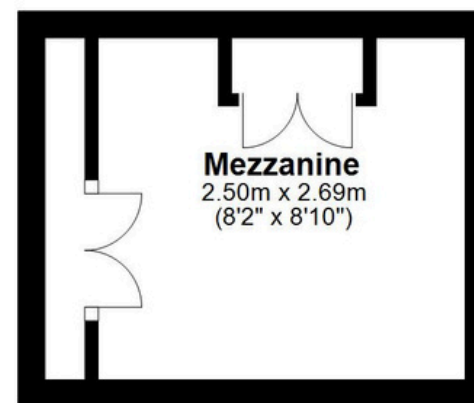
First Floor

Approx. 34.6 sq. metres (372.5 sq. feet)



Mezzanine

Approx. 7.7 sq. metres (82.6 sq. feet)



Total area: approx. 84.1 sq. metres (905.2 sq. feet)

6 The Old School House, Bentley Heath