

Need a Mortgage in principle to make offers? Call us now for quick assistance!
0121 775 0101



Do you need to sell? Start your journey now! Call us we can help.
01564 777 314



SCAN FOR MORE INFO
SIZE - 727 Sq Ft
TENURE - Leasehold
COUNCIL TAX - Solihull MBC - B
BROADBAND - Upload Max 1000 Mbps
 Download Max 220 Mbps
MOBILE - EE O2 Vodaphone
EPC - B
PARKING - One Allocated Parking Space & Visitor Parking Space
FLOODRISK - Very Low
SERVICES - Mains
COVENANTS - N/A

Are you an investor interested in expanding your portfolio?

Call 01564 777 314 to provide your investment criteria for alerts.

Hertford Way, Knowle

Purchase Price £280,000

A beautifully presented two double bedroom first floor apartment within the popular Middlefield Springs development. With the balance of the NHBC guarantee remaining, and being within walking distance to Dorridge train station and both Knowle and Dorridge village centres, early viewing is advised

FEATURES

- Beautifully Presented Two Bedroom First Floor Apartment
- Middlefield Spring Development
- Large Lounge/Diner
- Fitted Kitchen with Integrated Appliances
- Two Double Bedrooms
- Balance of Ten Year NHBC Guarantee
- Lift Access
- One Allocated Parking Space and Visitor Parking
- Walking Distance to Knowle and Dorridge
- NO UPWARD CHAIN

Sneak Peeks

Every week, we unveil "Sneak Peeks," a feature showcasing exclusive properties before they hit Rightmove and other platforms.

The Landlord Club

Join our Landlord Club for weekly updates on legislation, market trends, and our Letting Director's 'Investment Pick of the Week' for optimal ROI.

HTSPMD

Tune into 'How's The Solihull Property Market Dom' weekly for a quick, insightful snapshot of the market.

The Mortgage Update

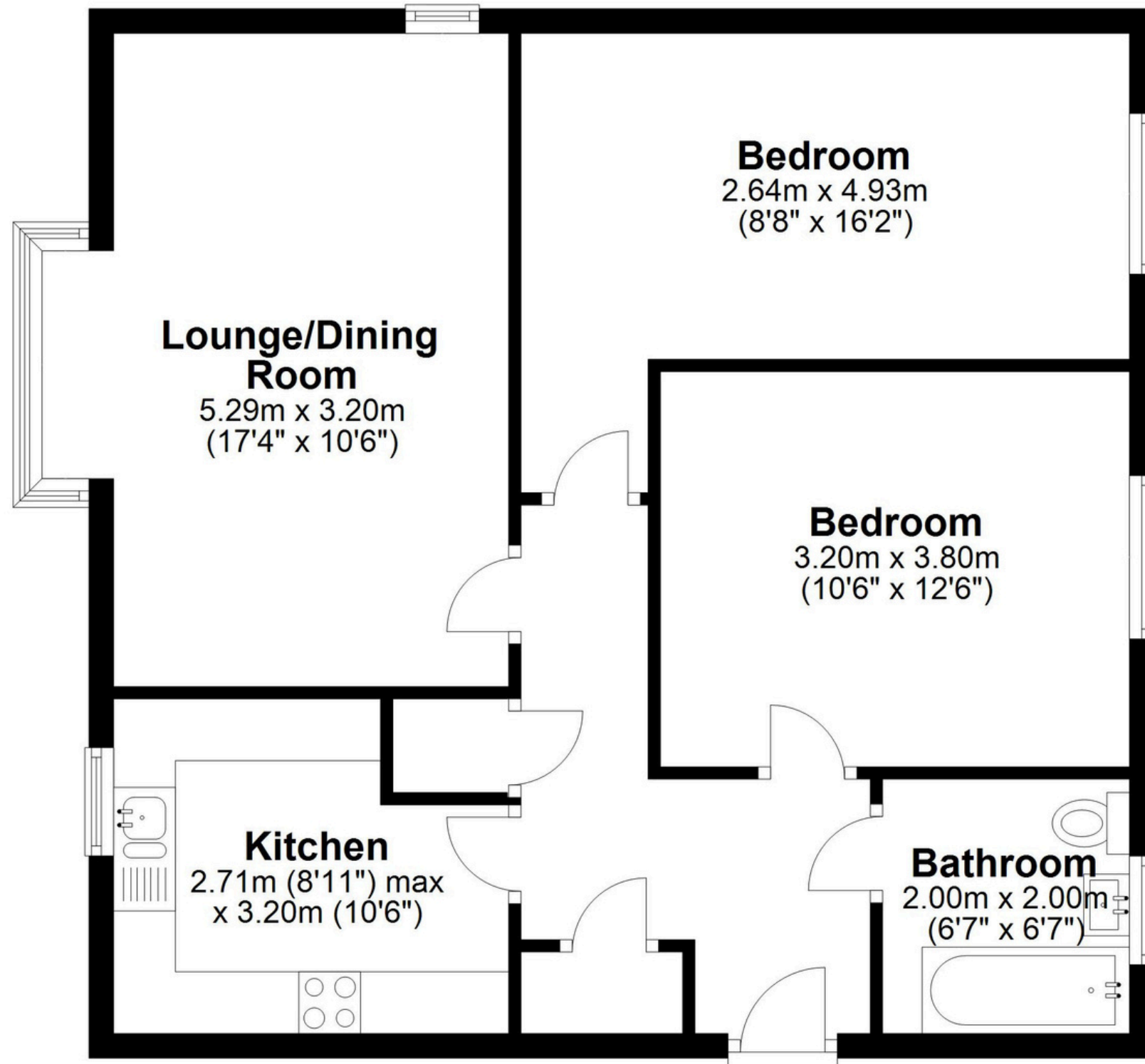
Get weekly insights and the best deals with our Mortgage Update, your shortcut to navigating the complex mortgage landscape confidently.



SCAN TO VIEW OUR WEEKLY FILMS & SUBSCRIBE

Floor Plan

Approx. 67.6 sq. metres (727.3 sq. feet)



Total area: approx. 67.6 sq. metres (727.3 sq. feet)

This floor plan is for illustration purposes only, this is not intended to be a measured/scaled survey or comply with RICS guidelines. All measurements (including total floor area) openings, orientation and floor area are approximate. No details are guaranteed, they cannot be relied upon for any purpose and do not form part of any agreement. A party must rely upon its own inspection(s). No responsibility is taken for any error, omission, or mis-statement.

Plan produced using PlanUp.