

Need a Mortgage in principle  
to make offers? Call us now  
for quick assistance!  
**0121 775 0101**



Do you need to sell?  
Start your journey now!  
Call us we can help.  
**01564 777 314**



**SCAN FOR MORE INFO**  
**SIZE** - 1,700 Sq Ft  
**TENURE** - Freehold  
**COUNCIL TAX** - Solihull MBC - G  
**BROADBAND** - Upload Max 1000 Mbps  
Download Max 1000 Mbps  
**MOBILE** - EE Three O2 Vodafone  
**EPC** - Double Garage and Driveway Parking  
**PARKING** -  
**FLOODRISK** - Very Low  
**SERVICES** - Mains  
**COVENANTS** - N/A

## QUEEN ELEANORS DRIVE

Knowle, B93

This well-presented four-bedroom detached bungalow in the peaceful cul-de-sac of Queen Eleanors Drive, Knowle. Featuring spacious single-storey living with a double garage, ample parking, and a beautiful south-facing garden. Ideal for downsizers. Offered with no upward chain.

### FEATURES

- Well Presented Four Bedroom Detached Bungalow
- Large Dual Aspect Living Room
- Separate Dining Room
- Breakfast Kitchen with Utility
- Principal Bedroom with En Suite
- Three Additional Good Sized Bedrooms
- Large Easily Maintained South Facing Garden
- Detached Double Garage
- Ample Driveway Parking
- Sought After Location in Knowle
- NO UPWARD CHAIN

Are you an investor  
interested in expanding your  
portfolio?

**Call 01564 777 314 to provide your investment criteria for alerts.**



SCAN TO **VIEW OUR**  
**WEEKLY FILMS &**  
**SUBSCRIBE**

### Sneak Peeks

Every week, we unveil "Sneak Peeks," a feature showcasing exclusive properties before they hit Rightmove and other platforms.

### The Landlord Club

Join our Landlord Club for weekly updates on legislation, market trends, and our Letting Director's 'Investment Pick of the Week' for optimal ROI.

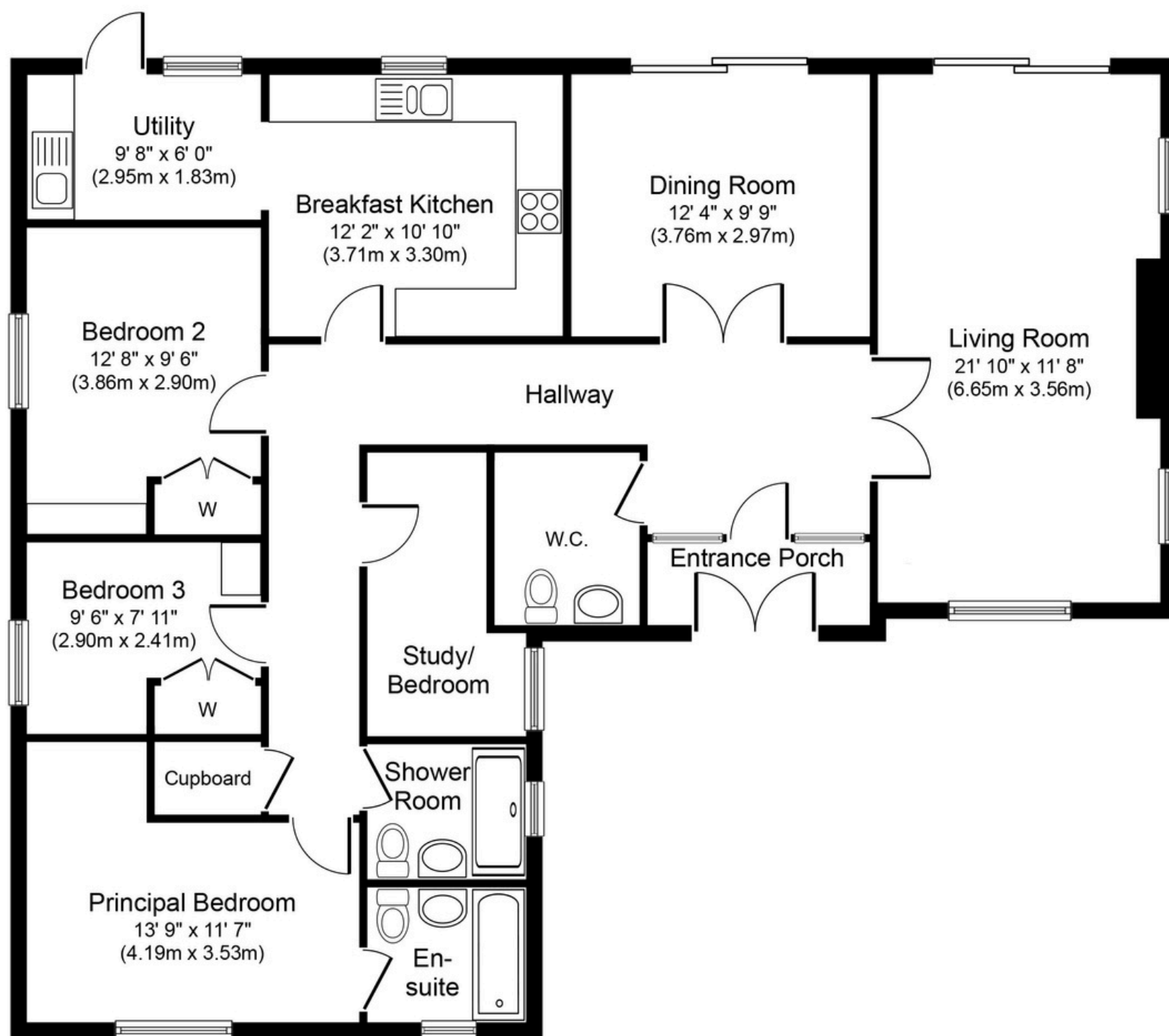
### HTSPMD

Tune into 'How's The Solihull Property Market Dom' weekly for a quick, insightful snapshot of the market.

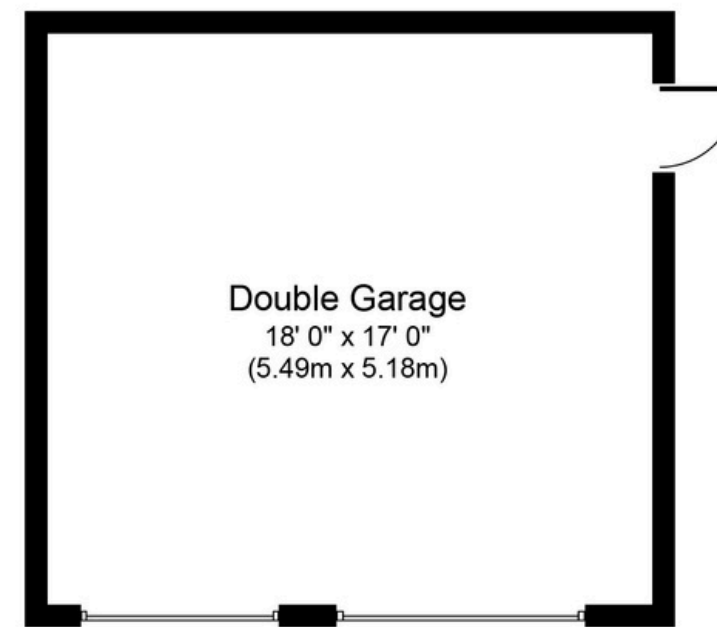
### The Mortgage Update

Get weekly insights and the best deals with our Mortgage Update, your shortcut to navigating the complex mortgage landscape confidently.





**Ground Floor**  
**Approximate Floor Area**  
**1,394 sq. ft.**  
**(129.5 sq. m.)**



**Garage**  
**Approximate Floor Area**  
**306 sq. ft.**  
**(28.4 sq. m.)**

Whilst every attempt has been made to ensure the accuracy of the floor plan contained here, measurements of doors, windows, rooms and any other items are approximate and no responsibility is taken for any error, omission, or mis-statement. The measurements should not be relied upon for valuation, transaction and/or funding purposes. This plan is for illustrative purposes only and should be used as such by any prospective purchaser or tenant. The services, systems and appliances shown have not been tested and no guarantee as to their operability or efficiency can be given.

Copyright V360 Ltd 2024 | [www.houseviz.com](http://www.houseviz.com)