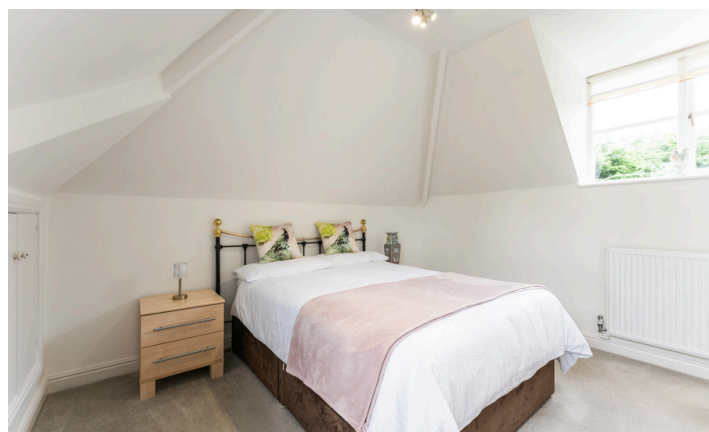


Need a Mortgage in principle to make offers? Call us now for quick assistance!  
0121 775 0101



Do you need to sell? Start your journey now! Call us we can help.  
01564 777 314



## Six Elms, The Avenue

Guide Price of £865,000

Well presented four bedroom dormer bungalow set in just over 1/4 acre private plot, in a semi rural location. Features private gardens, a detached garage, and an office space. Set back from the road with a large front drive.

### FEATURES

- Four Bedroom Dormer Bungalow
- Spacious Lounge
- Good Size Bedrooms
- Family Bathroom and En Suite
- Modern Breakfast Kitchen
- Private Gardens
- Large Front Drive
- Detached Garage and Office Space



### SCAN FOR MORE INFO

**SIZE** - 1878 Sq Ft  
**TENURE** - Freehold  
**COUNCIL TAX** - Warwick District Council G  
**BROADBAND** - Upload Max 1000 Mbps  
Download Max 1000 Mbps  
**MOBILE** - EE Three O2 Vodafone  
**EPC** - F  
**PARKING** - Driveway Parking  
**FLOODRISK** - Very Low  
**SERVICES** - Mains  
**COVENANTS** - N/A

Are you an investor interested in expanding your portfolio?

Call 01564 777 314 to provide your investment criteria for alerts.



SCAN TO VIEW OUR WEEKLY FILMS & SUBSCRIBE

### Sneak Peeks

Every week, we unveil "Sneak Peeks," a feature showcasing exclusive properties before they hit Rightmove and other platforms.

### The Landlord Club

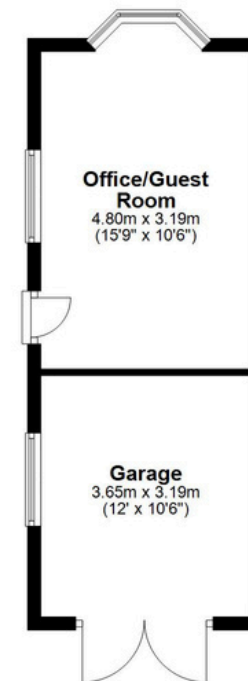
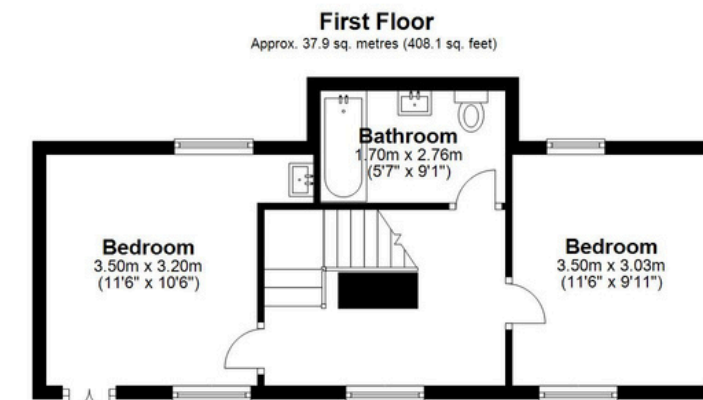
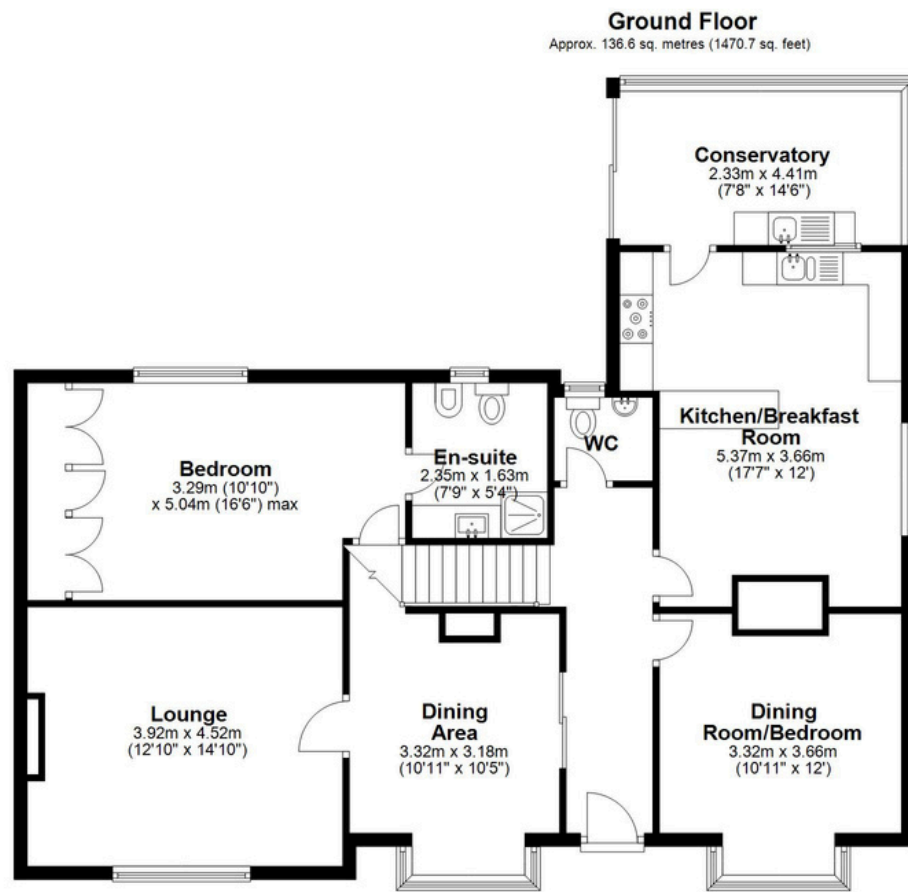
Join our Landlord Club for weekly updates on legislation, market trends, and our Letting Director's 'Investment Pick of the Week' for optimal ROI.

### HTSPMD

Tune into 'How's The Solihull Property Market Dom' weekly for a quick, insightful snapshot of the market.

### The Mortgage Update

Get weekly insights and the best deals with our Mortgage Update, your shortcut to navigating the complex mortgage landscape confidently.



Total area: approx. 174.5 sq. metres (1878.8 sq. feet)

This floor plan is for illustration purposes only, this is not intended to be a measured/scaled survey or comply with RICS guidelines. All measurements (including total floor area) openings, orientation and floor area are approximate. No details are guaranteed, they cannot be relied upon for any purpose and do not form part of any agreement. A party must rely upon its own inspection(s). No responsibility is taken for any error, omission, or mis-statement.  
Plan produced using PlanUp.