

Need a Mortgage in principle to make offers? Call us now for quick assistance!
0121 775 0101



Do you need to sell? Start your journey now! Call us we can help.
01564 777 314



132 Earlswood Common

Purchase Price of £850,000

Experience serene countryside living in this five-bedroom detached dormer bungalow in Earlswood. Featuring a kitchen/diner, a sunroom, and two single garages, this home offers stunning views and ample outdoor space. Perfect for families looking for tranquillity and comfort.

SCAN FOR MORE INFO

SIZE - 2148 Sq Ft
TENURE - Freehold
COUNCIL TAX - Stratford Upon Avon District Council - E
BROADBAND - Upload Max 1GBps
Download Max 1GBps
MOBILE - EE Three O2 Vodafone
EPC - B - 83
PARKING - For at least 4 Cars
FLOODRISK - Very Low
SERVICES - Mains
COVENANTS - N/A

Are you an investor interested in expanding your portfolio?

Call 01564 777 314 to provide your investment criteria for alerts.

FEATURES

- Five Bedroom Dormer Bungalow
- Lounge Wth French Doors To Garden
- Open Plan Kitchen/Diner
- Sun Room With Stunning Views
- Four Bedrooms Downstairs
- Separate Shower Room With WC
- Principal Bedroom With En suite
- Large Private Garden With Vegetable Patch
- Two Sngle Garages
- Breath Taking Countryside Views



SCAN TO VIEW OUR WEEKLY FILMS & SUBSCRIBE

Sneak Peeks

Every week, we unveil "Sneak Peeks," a feature showcasing exclusive properties before they hit Rightmove and other platforms.

The Landlord Club

Join our Landlord Club for weekly updates on legislation, market trends, and our Letting Director's 'Investment Pick of the Week' for optimal ROI.

HTSPMD

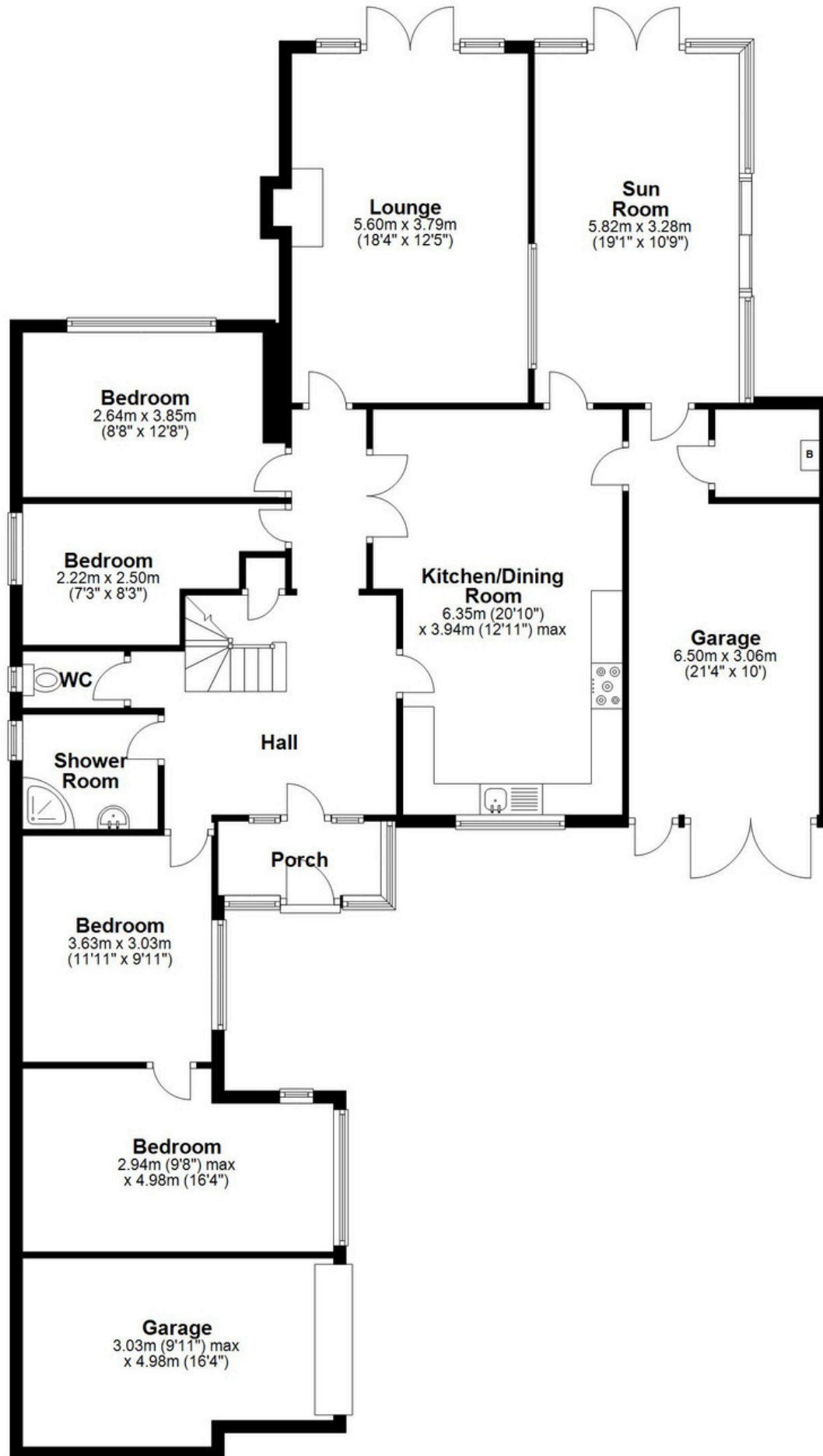
Tune into 'How's The Solihull Property Market Dom' weekly for a quick, insightful snapshot of the market.

The Mortgage Update

Get weekly insights and the best deals with our Mortgage Update, your shortcut to navigating the complex mortgage landscape confidently.

Ground Floor

Approx. 172.6 sq. metres (1858.0 sq. feet)



First Floor

Approx. 27.0 sq. metres (290.3 sq. feet)



Total area: approx. 199.6 sq. metres (2148.3 sq. feet)

This floor plan is for illustration purposes only, this is not intended to be a measured/scaled survey or comply with RICS guidelines. All measurements (including total floor area) openings, orientation and floor area are approximate. No details are guaranteed, they cannot be relied upon for any purpose and do not form part of any agreement. A party must rely upon its own inspection(s). No responsibility is taken for any error, omission, or mis-statement.
Plan produced using PlanUp.