

Need a Mortgage in principle to make offers? Call us now for quick assistance!  
0121 775 0101



Do you need to sell? Start your journey now! Call us we can help.  
01564 777 314



**SCAN FOR MORE INFO**

**SIZE** - 665 Sq Ft  
**TENURE** - Freehold  
**COUNCIL TAX** - Solihull MBC - D  
**BROADBAND** - Upload Max 1000 Mbps  
 Download Max 100 Mbps  
**MOBILE** - EE Three O2 Vodafone  
**EPC** - E  
**PARKING** - Driveway Parking  
**FLOODRISK** - Very Low  
**SERVICES** - Mains  
**COVENANTS** - N/A

**85 Lodge Road**

**Offers Over £325,000**

Discover this traditional two-bedroom end terrace house in Knowle Village, featuring a through lounge, potential for extension STPP, and a good size garden. Ideally located within walking distance to Knowle High Street and falling within the Arden Academy catchment area. Offered with no upward chain.

**FEATURES**

- Two Bedroom end terrace house
- Through Lounge with Dining area
- Rear Kitchen with Garden access
- Good size private Garden
- Potential to extend (STP)
- Driveway parking
- Walking distance to Knowle Village
- Arden Academy catchment
- NO UPWARD CHAIN

Are you an investor interested in expanding your portfolio?

**Call 01564 777 314 to provide your investment criteria for alerts.**



SCAN TO VIEW OUR WEEKLY FILMS & SUBSCRIBE



**Sneak Peeks**

Every week, we unveil "Sneak Peeks," a feature showcasing exclusive properties before they hit Rightmove and other platforms.



**The Landlord Club**

Join our Landlord Club for weekly updates on legislation, market trends, and our Letting Director's 'Investment Pick of the Week' for optimal ROI.



**HTSPMD**

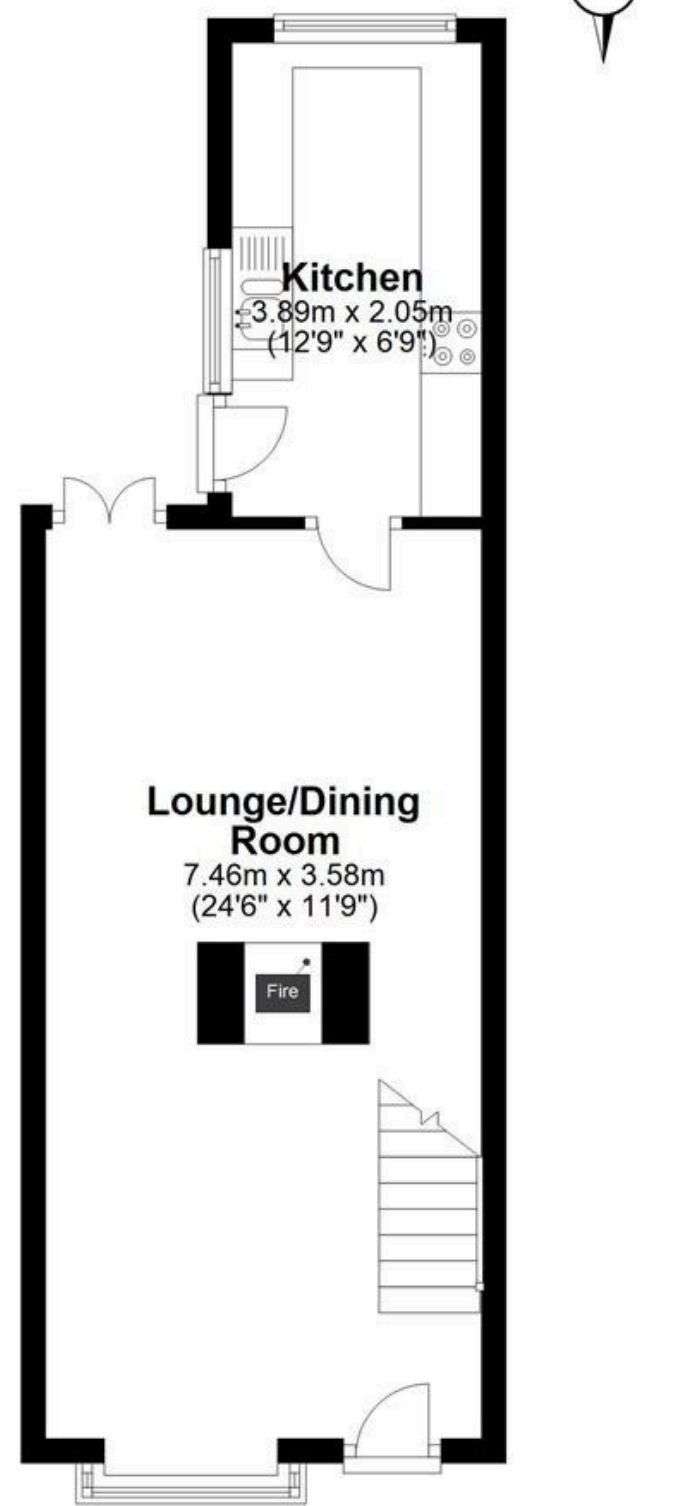
Tune into 'How's The Solihull Property Market Dom' weekly for a quick, insightful snapshot of the market.



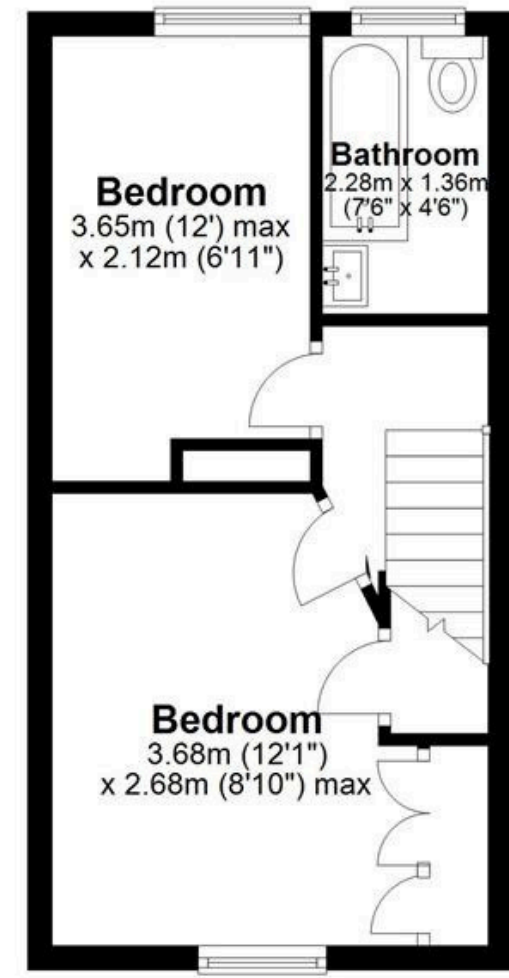
**The Mortgage Update**

Get weekly insights and the best deals with our Mortgage Update, your shortcut to navigating the complex mortgage landscape confidently.

**Ground Floor**  
Approx. 35.1 sq. metres (377.8 sq. feet)



**First Floor**  
Approx. 26.7 sq. metres (287.5 sq. feet)



Total area: approx. 61.8 sq. metres (665.3 sq. feet)

Please note this plan is for illustration purposes only, this is not intended to be a measured survey or comply with RICS guidelines. All measurements are for the actual floor area and are approximate so should be checked by prospective buyers/tenants. No responsibility is taken for any error, omission, or mis-statement. Plan produced using PlanUp.