

Need a Mortgage in principle to make offers? Call us now for quick assistance!  
0121 775 0101



Do you need to sell? Start your journey now! Call us we can help.  
01564 777 314



## 48 Woodchester Road

Purchase Price of offers over £850,000

### SCAN FOR MORE INFO

**SIZE** - 1832 Sq Ft  
**TENURE** - Freehold  
**COUNCIL TAX** - Solihull MBC - F  
**BROADBAND** - Upload 1000 Mbps  
 Download 1000 Mbps  
**MOBILE** - EE, O2, Vodafone  
**EPC** - D  
**PARKING** - Driveway Parking and Garage  
**FLOODRISK** - Very Low  
**SERVICES** - Mains  
**COVENANTS** - No

Are you an investor interested in expanding your portfolio?

Call 01564 777 314 to provide your investment criteria for alerts.

Welcome to Woodchester Road, this detached four bedroom house is located on one of the most sought after roads in Dorridge and is perfect for those looking to be within walking distance from all the local amenities and highly regarded local schools whilst still having easy walking access to the picturesque local countryside. An easy walk to Dorridge station provides access to the national train network with regular services to London, Birmingham and beyond.

### FEATURES

- Detached four bedroom house
- Recently Modernised and upgraded
- Large Lounge/Dining room
- Living room/Day room
- Refitted Breakfast Kitchen with Snug area
- Easily maintained large rear Garden with patio area
- Garage and off road driveway parking for several vehicles
- New external windows and doors
- Sought after location
- Short walk to Dorridge Village centre



SCAN TO VIEW OUR WEEKLY FILMS & SUBSCRIBE

### Sneak Peeks

Every week, we unveil "Sneak Peeks," a feature showcasing exclusive properties before they hit Rightmove and other platforms.

### The Landlord Club

Join our Landlord Club for weekly updates on legislation, market trends, and our Letting Director's 'Investment Pick of the Week' for optimal ROI.

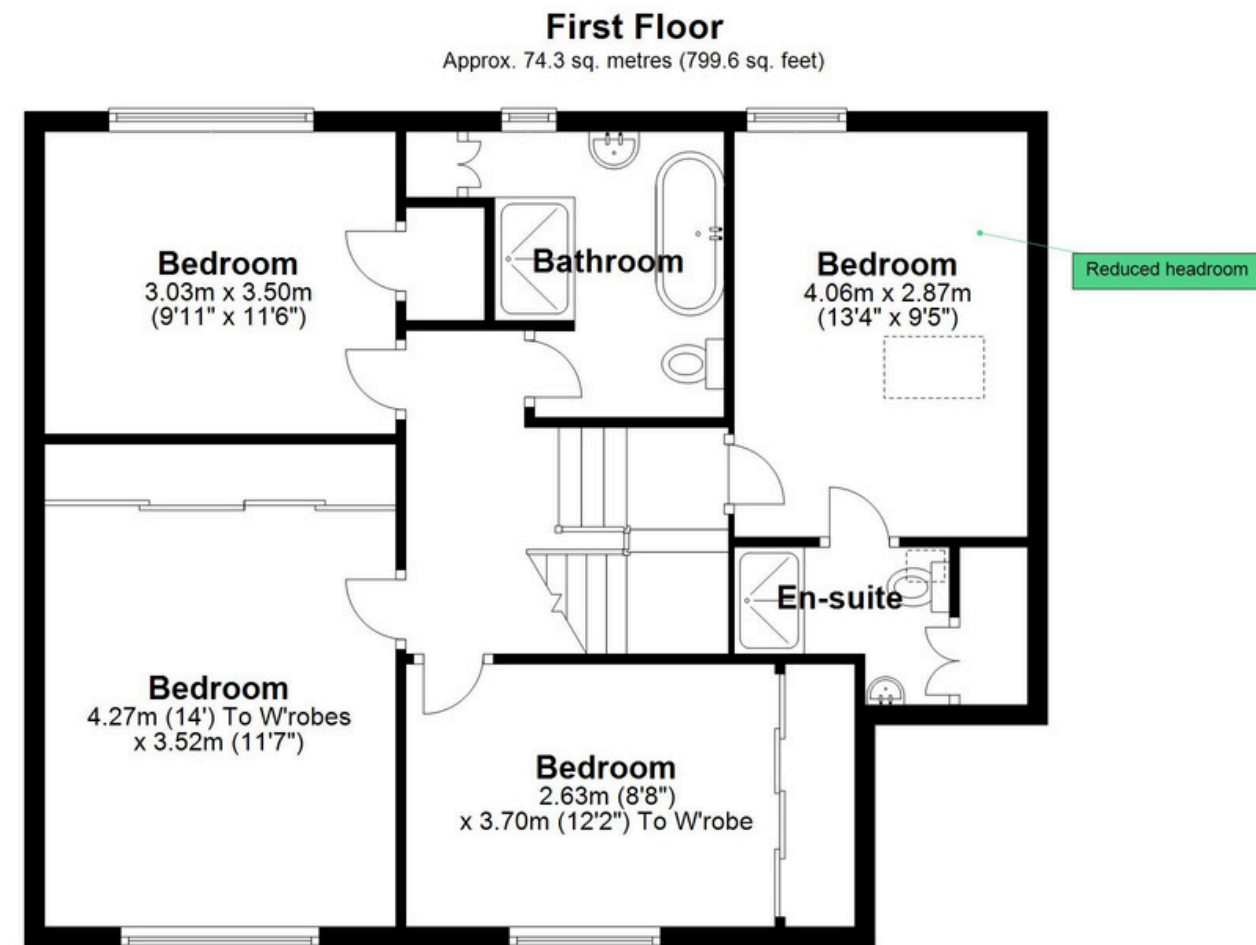
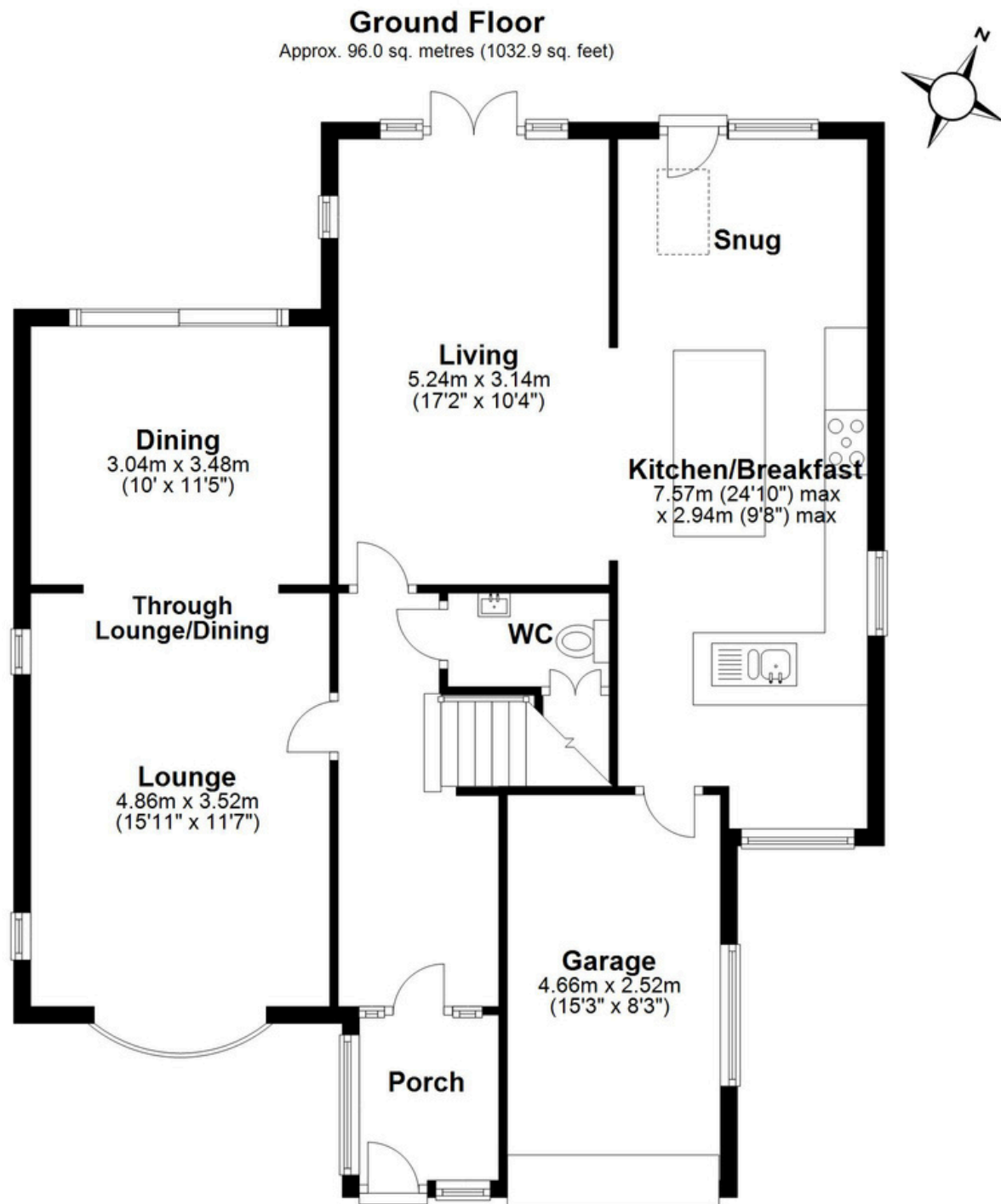
### HTSPMD

Tune into 'How's The Solihull Property Market Dom' weekly for a quick, insightful snapshot of the market.

### The Mortgage Update

Get weekly insights and the best deals with our Mortgage Update, your shortcut to navigating the complex mortgage landscape confidently.





**Total area: approx. 170.3 sq. metres (1832.6 sq. feet)**

This floor plan is for illustration purposes only, this is not intended to be a measured/scaled survey or comply with RICS guidelines. All measurements (including total floor area) openings, orientation and floor area are approximate. No details are guaranteed, they cannot be relied upon for any purpose and do not form part of any agreement. A party must rely upon its own inspection(s). No responsibility is taken for any error, omission, or mis-statement.  
Plan produced using PlanUp.