

Need a Mortgage in principle to make offers? Call us now for quick assistance!
0121 775 0101



Do you need to sell? Start your journey now! Call us we can help.
01564 777 314



21 Aspley Heath Lane

Offers Over £550,000

SCAN FOR MORE INFO
SIZE - 1712 Sq Ft
TENURE - Freehold
COUNCIL TAX - Stratford Upon District Council - D
BROADBAND - Upload Max 13 Mbps
 Download Max 66 Mbps
MOBILE - EE, Three, O2
EPC - D
PARKING - Driveway Parking
FLOODRISK - Very Low
SERVICES - Mains
COVENANTS - N/A

A beautifully modernized four-bedroom semi-detached house nestled in a serene semi-rural location. This property features a spacious lounge with an open fire, a large kitchen/living/dining area with underfloor heating, and a picturesque private garden. Offered with no upward chain, it boasts a large driveway and is perfect for families seeking a peaceful lifestyle.

FEATURES

- Four Bedroom Semi Detached house
- Spacious Lounge with feature open fire
- Large Kitchen Living Dining Room
- Snug Room
- Good Size Private Garden
- Semi-Rural Location
- En Suite and Family Bathroom
- Large Driveway and Sumer House
- No Upward Chain

Are you an investor interested in expanding your portfolio?

Call 01564 777 314 to provide your investment criteria for alerts.



SCAN TO VIEW OUR WEEKLY FILMS & SUBSCRIBE

Sneak Peeks

Every week, we unveil "Sneak Peeks," a feature showcasing exclusive properties before they hit Rightmove and other platforms.

The Landlord Club

Join our Landlord Club for weekly updates on legislation, market trends, and our Letting Director's 'Investment Pick of the Week' for optimal ROI.

HTSPMD

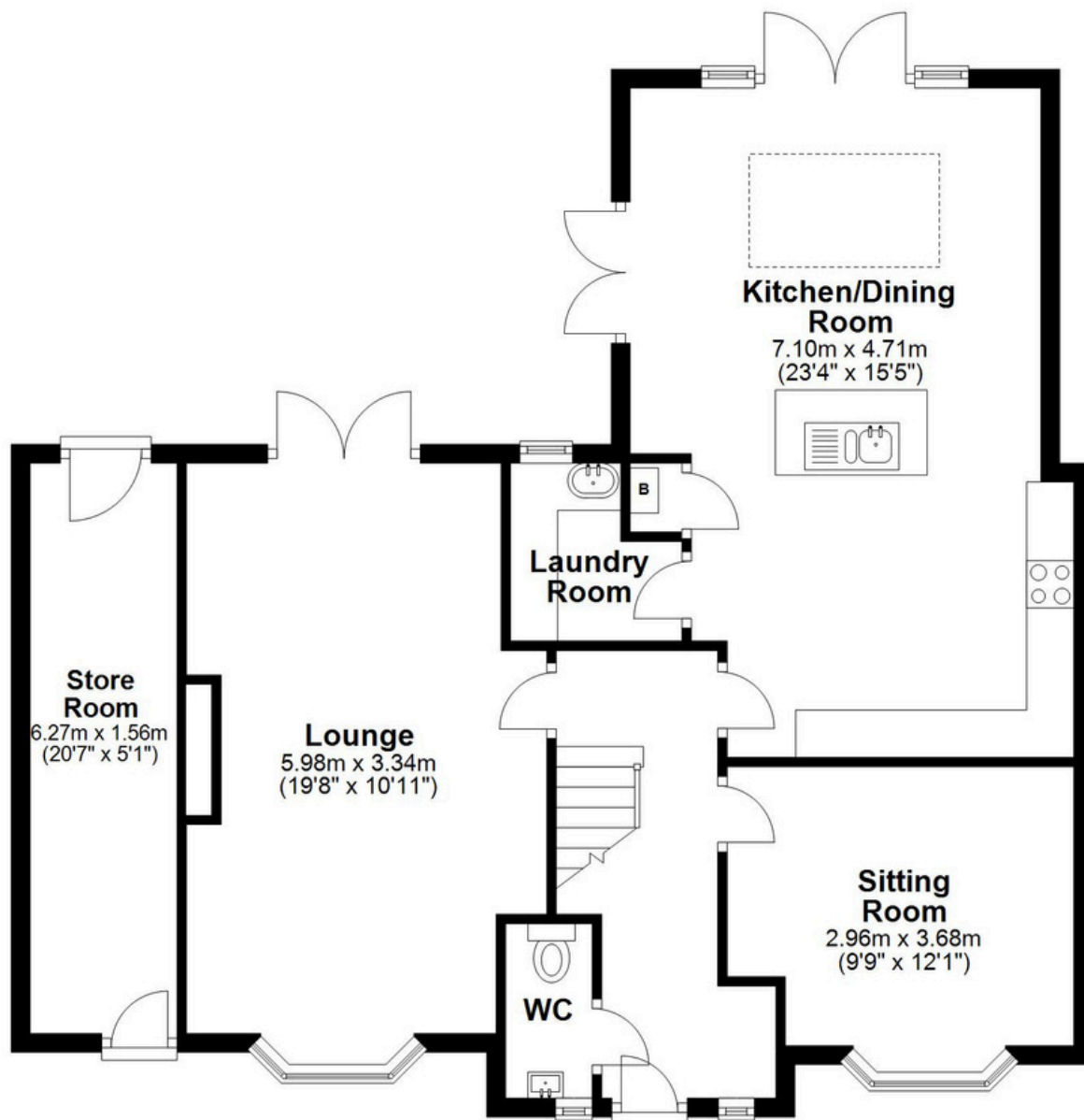
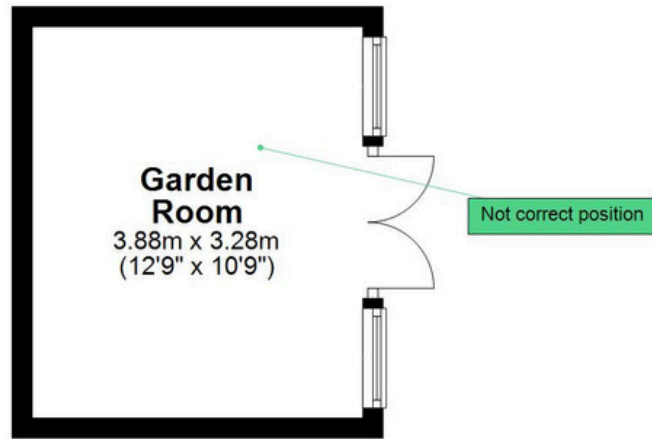
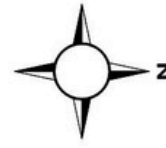
Tune into 'How's The Solihull Property Market Dom' weekly for a quick, insightful snapshot of the market.

The Mortgage Update

Get weekly insights and the best deals with our Mortgage Update, your shortcut to navigating the complex mortgage landscape confidently.

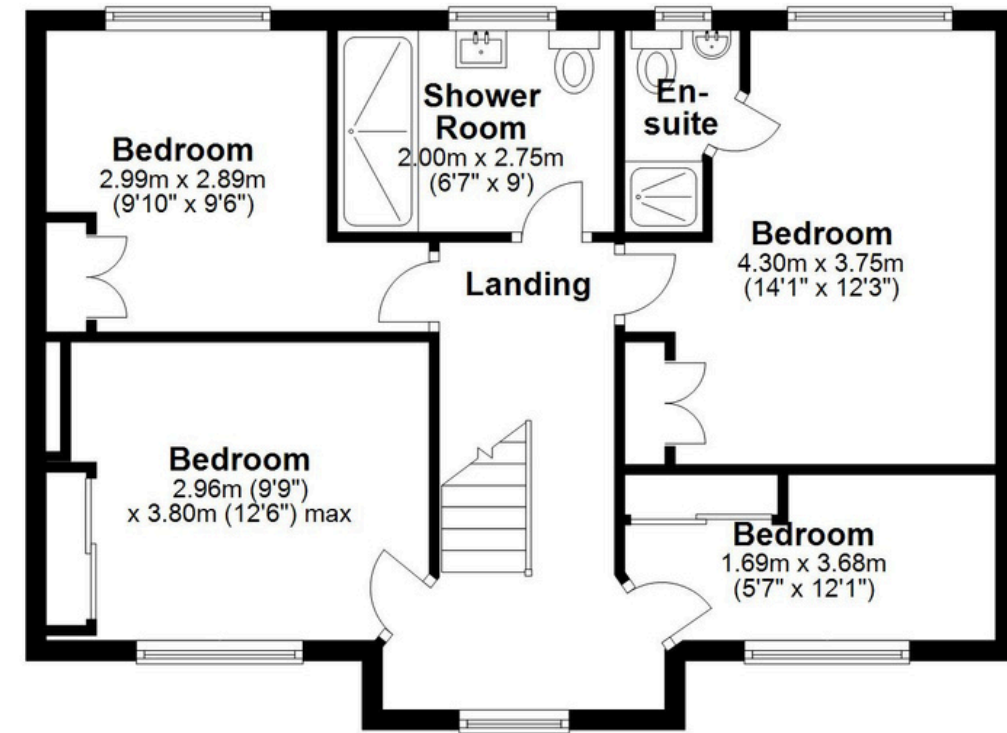
Ground Floor

Approx. 100.0 sq. metres (1076.1 sq. feet)



First Floor

Approx. 59.1 sq. metres (636.4 sq. feet)



Total area: approx. 159.1 sq. metres (1712.5 sq. feet)

This floor plan is for illustration purposes only, this is not intended to be a measured/scaled survey or comply with RICS guidelines. All measurements (including total floor area) openings, orientation and floor area are approximate. No details are guaranteed, they cannot be relied upon for any purpose and do not form part of any agreement. A party must rely upon its own inspection(s). No responsibility is taken for any error, omission, or mis-statement.
Plan produced using PlanUp.