

Need a Mortgage in principle to make offers? Call us now for quick assistance!
0121 775 0101



Do you need to sell? Start your journey now! Call us we can help.
01564 777 314



SCAN FOR MORE INFO
SIZE - 2444 Sq Ft
TENURE - Freehold
COUNCIL TAX - Solihull MBC - G
BROADBAND - Upload Max 1000 Mbps
 Download Max 220 Mbps
MOBILE - EE O2 Vodaphone
EPC - C
PARKING - Double Garage and driveway parking
FLOODRISK - Very Low
SERVICES - Mains
COVENANTS - N/A

2671 Stratford Road

Offers in the region of £875,000

A modern four-bedroom detached house nestled within a private gated development. This stunning home boasts three reception rooms, a modern breakfast kitchen, and an elegant living dining area with a unique curved glass staircase. Located within walking distance of Hockley Heath Village and in the Tudor Grange Academy catchment, this property combines luxury, security, and convenience, making it an ideal choice for discerning families.

FEATURES

- Modern Four Double Bedroom Detached House
- Private Gated Development
- Three Reception Rooms
- Modern Breakfast Kitchen
- Large Living Room
- Underfloor Heating Throughout The Ground Floor with a Conventional Central Heating System
- Family Bathroom and Two En Suites
- Landscaped Garden with Summer House
- Detached Double Garage
- Tudor Grange Academy Catchment

Are you an investor interested in expanding your portfolio?

Call 01564 777 314 to provide your investment criteria for alerts.



SCAN TO VIEW OUR WEEKLY FILMS & SUBSCRIBE

Sneak Peeks

Every week, we unveil "Sneak Peeks," a feature showcasing exclusive properties before they hit Rightmove and other platforms.

The Landlord Club

Join our Landlord Club for weekly updates on legislation, market trends, and our Letting Director's 'Investment Pick of the Week' for optimal ROI.

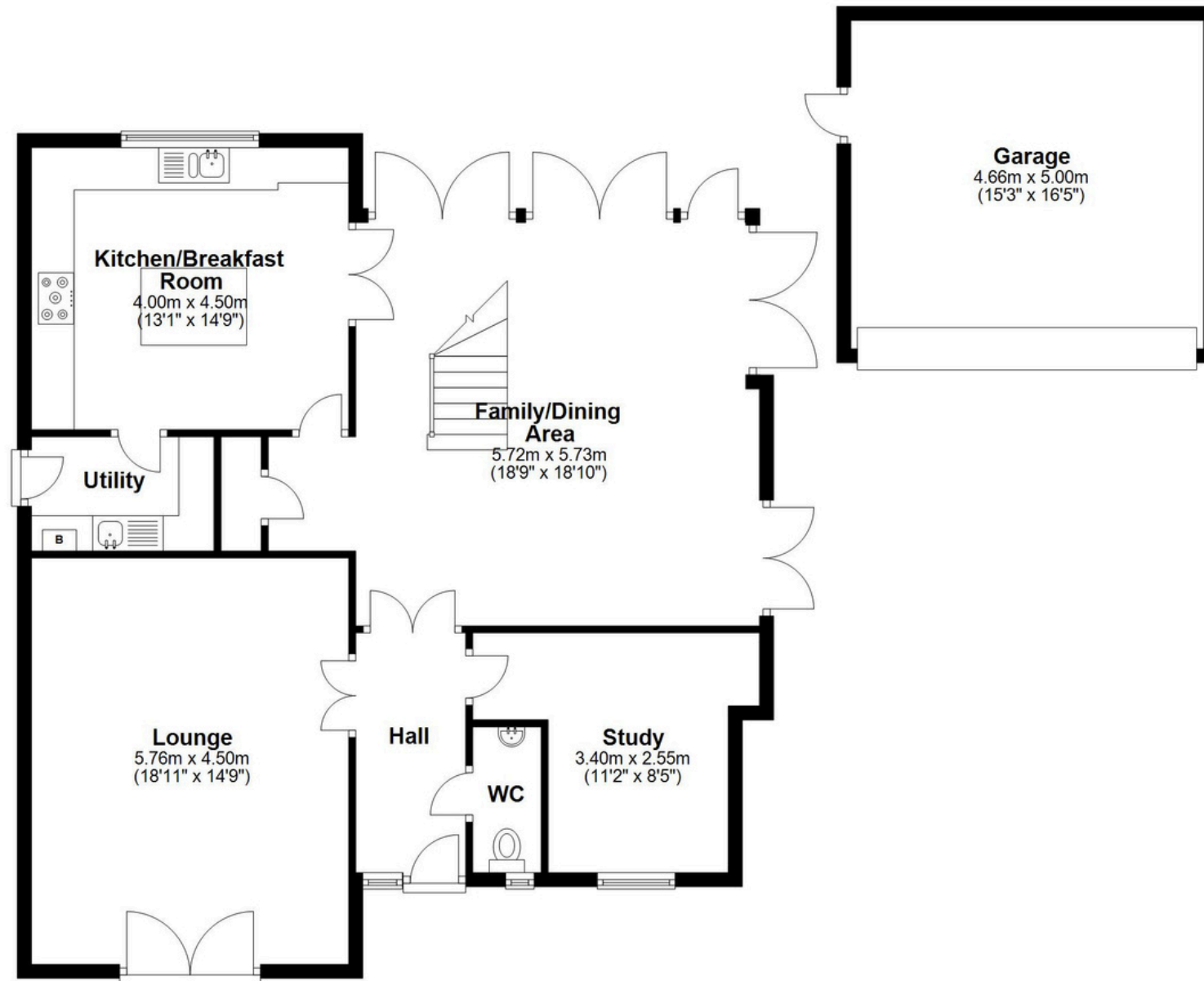
HTSPMD

Tune into 'How's The Solihull Property Market Dom' weekly for a quick, insightful snapshot of the market.

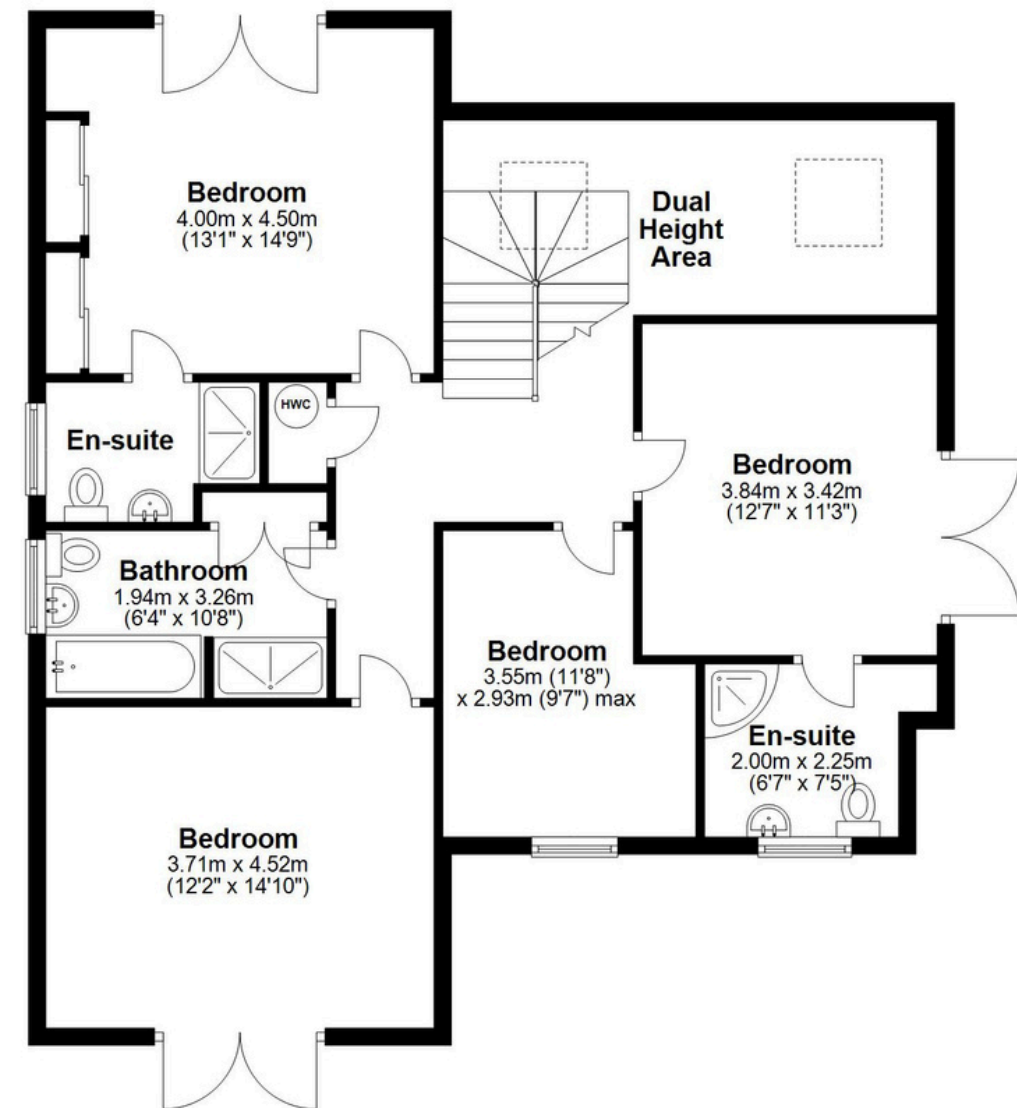
The Mortgage Update

Get weekly insights and the best deals with our Mortgage Update, your shortcut to navigating the complex mortgage landscape confidently.

Ground Floor
Approx. 127.4 sq. metres (1370.9 sq. feet)



First Floor
Approx. 99.8 sq. metres (1073.9 sq. feet)



Total area: approx. 227.1 sq. metres (2444.8 sq. feet)

This floor plan is for illustration purposes only, this is not intended to be a measured/scaled survey or comply with RICS guidelines. All measurements (including total floor area) openings, orientation and floor area are approximate. No details are guaranteed, they cannot be relied upon for any purpose and do not form part of any agreement. A party must rely upon its own inspection(s). No responsibility is taken for any error, omission, or mis-statement.
Plan produced using PlanUp.