

Need a Mortgage in principle to make offers? Call us now for quick assistance!
0121 775 0101



Do you need to sell? Start your journey now! Call us we can help.
01564 777 314



SCAN FOR MORE INFO
SIZE - 1095 Sq Ft
TENURE - Freehold
COUNCIL TAX - Solihull MBC - C
BROADBAND - Upload Max 1000 Mbps
Download Max 1000 Mbps
MOBILE - EE Three O2 Vodafone
EPC - C
PARKING - For several vehicles
FLOODRISK - Very Low
SERVICES - Mains
COVENANTS - N/A

Mill Lane, Bentley Heath

Purchase Price £415,000

An immaculately presented three bedroom semi-detached home in Bentley Heath, offering spacious living areas, a low maintenance garden, and a convenient location within the Arden Academy catchment.

FEATURES

- Three Bedroom Semi Detached Property
- Two Reception Rooms
- Kitchen with Utility
- Guest Cloakroom
- Low Maintenance Private Garden
- Driveway with Ample Parking
- Modern Décor Throughout
- Arden Academy Catchment
- Walking Distance to Dorridge Train Station

Are you an investor interested in expanding your portfolio?

Call 01564 777 314 to provide your investment criteria for alerts.



SCAN TO VIEW OUR WEEKLY FILMS & SUBSCRIBE

Sneak Peeks

Every week, we unveil "Sneak Peeks," a feature showcasing exclusive properties before they hit Rightmove and other platforms.

The Landlord Club

Join our Landlord Club for weekly updates on legislation, market trends, and our Letting Director's 'Investment Pick of the Week' for optimal ROI.

HTSPMD

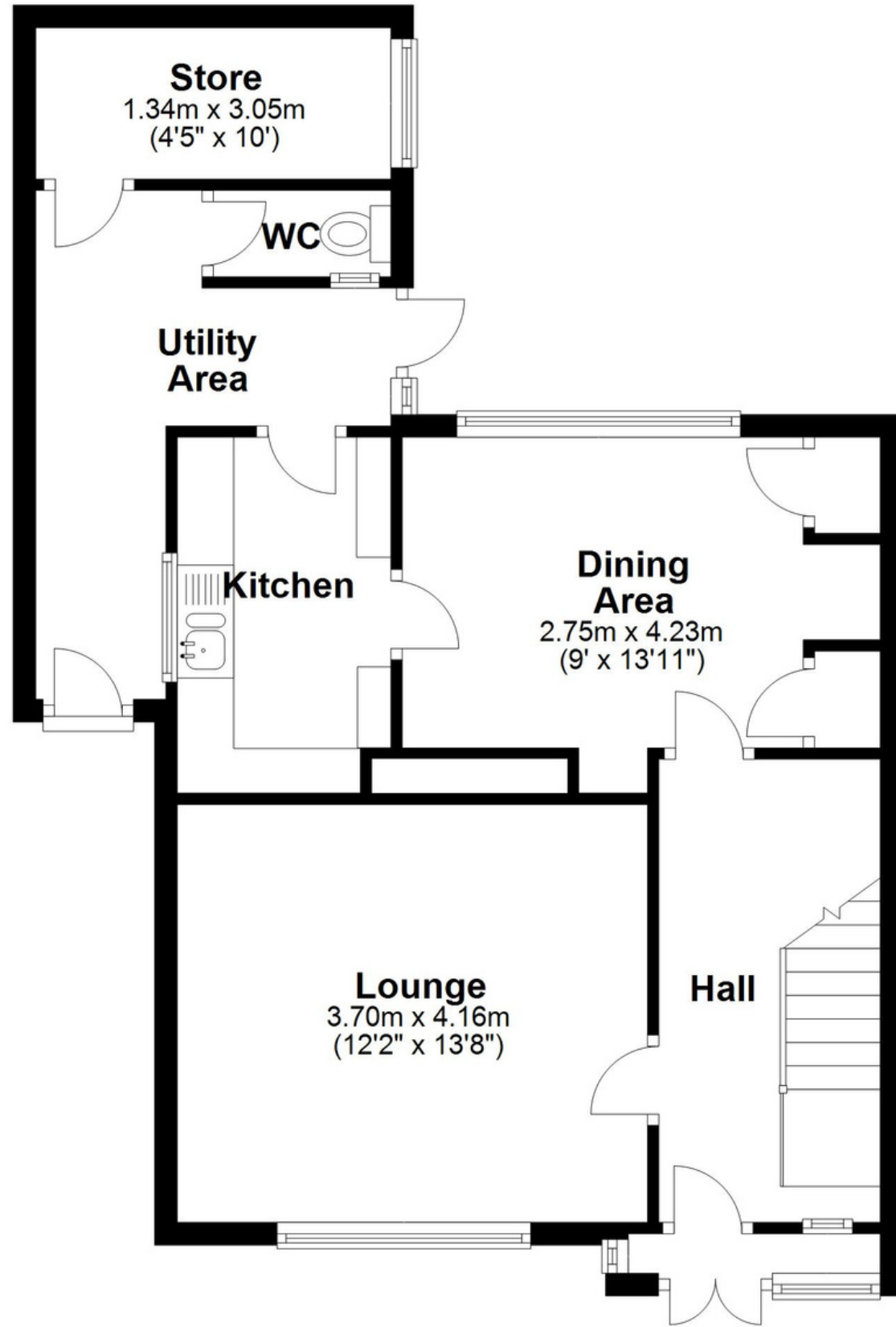
Tune into 'How's The Solihull Property Market Dom' weekly for a quick, insightful snapshot of the market.

The Mortgage Update

Get weekly insights and the best deals with our Mortgage Update, your shortcut to navigating the complex mortgage landscape confidently.

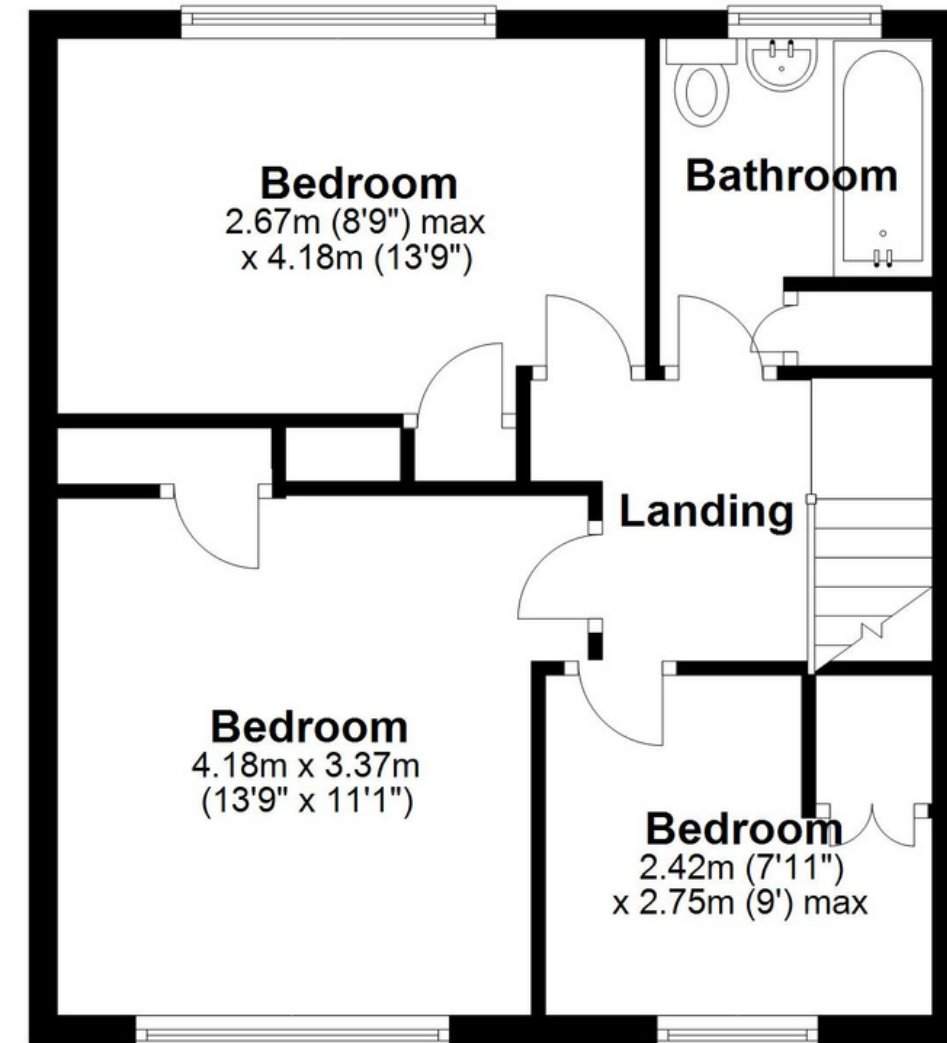
Ground Floor

Approx. 58.4 sq. metres (628.8 sq. feet)



First Floor

Approx. 43.3 sq. metres (466.2 sq. feet)



Total area: approx. 101.7 sq. metres (1095.0 sq. feet)

This floor plan is for illustration purposes only, this is not intended to be a measured/scaled survey or comply with RICS guidelines. All measurements (including total floor area) openings, orientation and floor area are approximate. No details are guaranteed, they cannot be relied upon for any purpose and do not form part of any agreement. A party must rely upon its own inspection(s). No responsibility is taken for any error, omission, or mis-statement.

Plan produced using PlanUp.