

Need a Mortgage in principle to make offers? Call us now for quick assistance!
0121 775 0101



Do you need to sell? Start your journey now! Call us we can help.
01564 777 314



The Rosery, Stratford Road

Purchase Price of £625,000

SCAN FOR MORE INFO

SIZE - 1237 Sq Ft

TENURE - Freehold

COUNCIL TAX - Stratford Upon Avon Council - E

BROADBAND - Upload Max 1000 Mbps
Download Max 220 Mbps

MOBILE - EE/O2/Vodafone

EPC - D

PARKING - Parking for several vehicles

FLOODRISK - Very Low

SERVICES - Mains gas and drainage is by septic tank

COVENANTS - N/A

This charming three bedroom Victorian cottage, is beautifully maintained, and brimming with delightful features with room for extension (STPP). This detached property is conveniently located close to Hockley Heath village centre, a generously sized private garden, and ample driveway.

FEATURES

- Detached Victorian Cottage
- Separate Dining Room
- Cosy Lounge With Log Burner
- Modern Kitchen & Utility Room
- PVC Double Glazing Throughout
- Summerhouse & Shed With Power
- Entertaining Bar Room
- Downstairs Shower Room
- Three Spacious Double Bedrooms
- Ample Parking On Spacious Driveway & Large Private Garden

Are you an investor interested in expanding your portfolio?

Call 01564 777 314 to provide your investment criteria for alerts.

Sneak Peeks

Every week, we unveil "Sneak Peeks," a feature showcasing exclusive properties before they hit Rightmove and other platforms.

The Landlord Club

Join our Landlord Club for weekly updates on legislation, market trends, and our Letting Director's 'Investment Pick of the Week' for optimal ROI.

HTSPMD

Tune into 'How's The Solihull Property Market Dom' weekly for a quick, insightful snapshot of the market.

The Mortgage Update

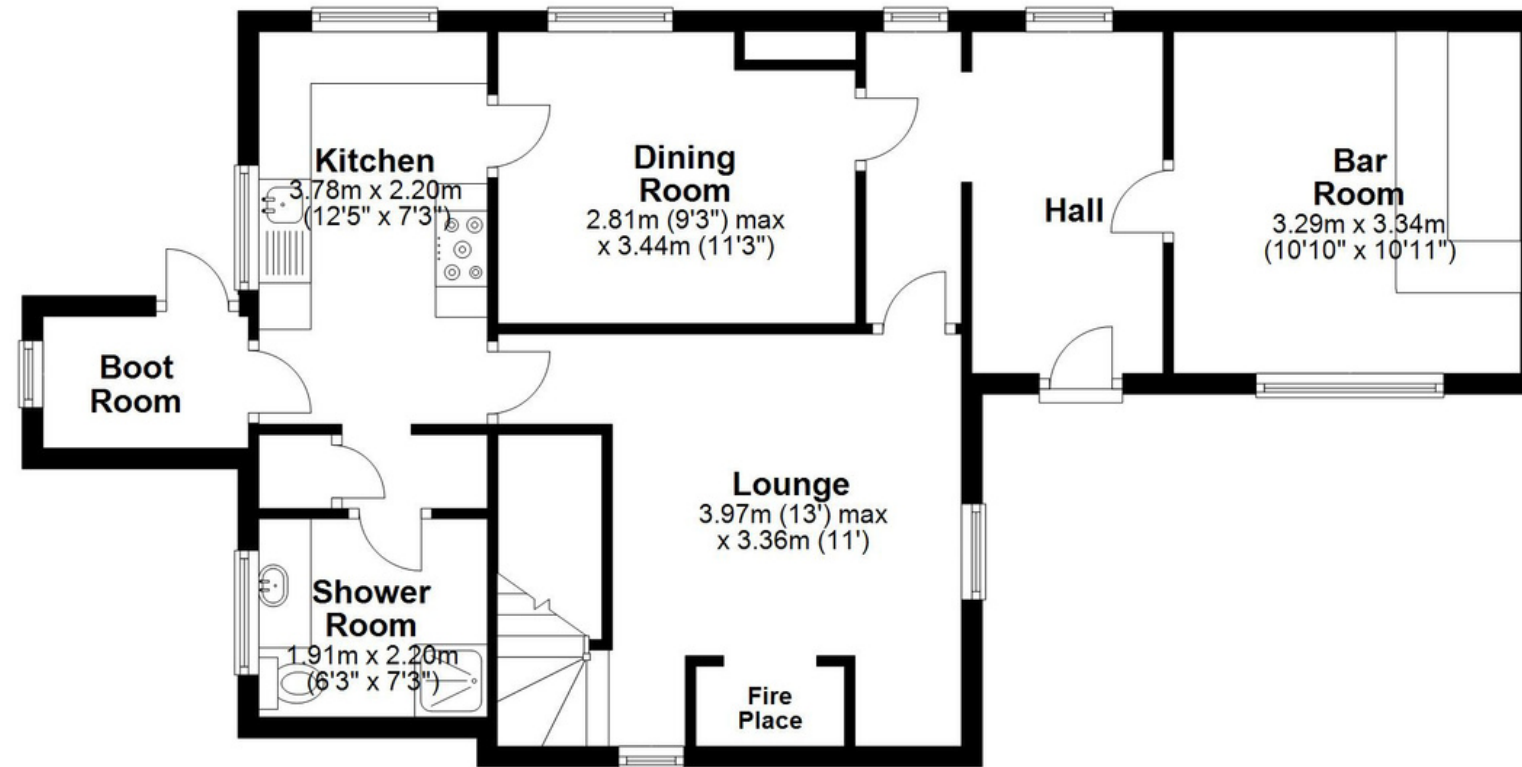
Get weekly insights and the best deals with our Mortgage Update, your shortcut to navigating the complex mortgage landscape confidently.



SCAN TO VIEW OUR WEEKLY FILMS & SUBSCRIBE

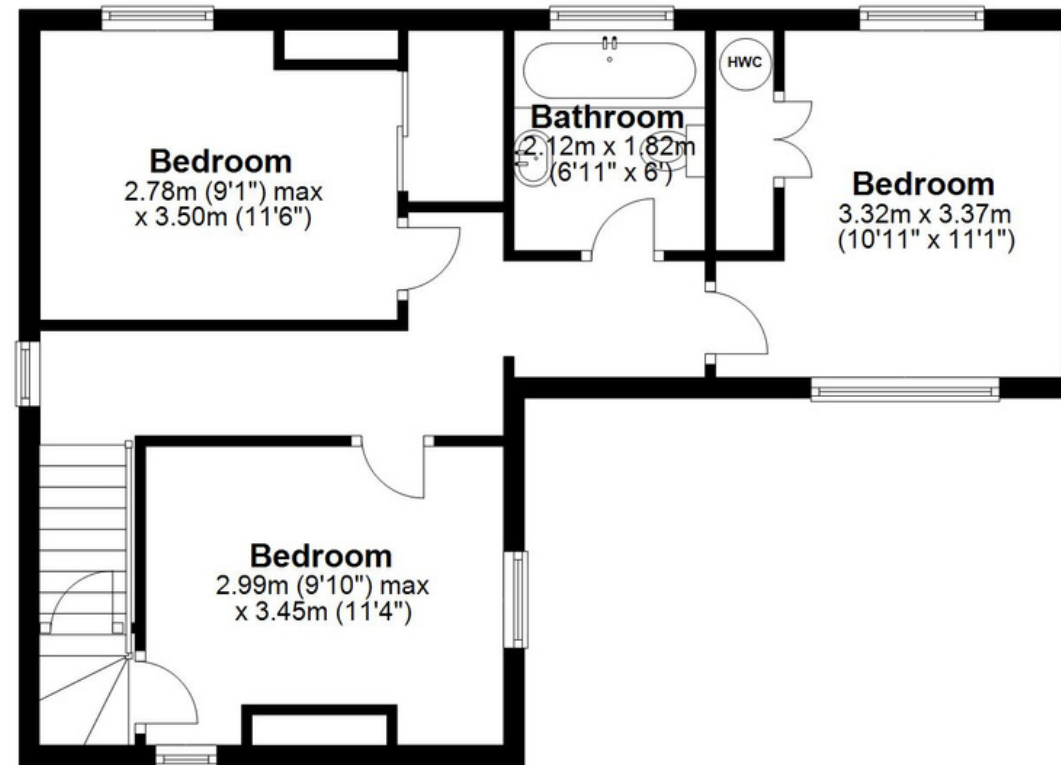
Ground Floor

Approx. 66.2 sq. metres (712.2 sq. feet)



First Floor

Approx. 48.8 sq. metres (525.3 sq. feet)



Total area: approx. 115.0 sq. metres (1237.5 sq. feet)

This floor plan is for illustration purposes only, this is not intended to be a measured/scaled survey or comply with RICS guidelines. All measurements (including total floor area) openings, orientation and floor area are approximate. No details are guaranteed, they cannot be relied upon for any purpose and do not form part of any agreement. A party must rely upon its own inspection(s). No responsibility is taken for any error, omission, or mis-statement.
Plan produced using PlanUp.