

Need a Mortgage in principle to make offers? Call us now for quick assistance!
0121 775 0101



Do you need to sell? Start your journey now! Call us we can help.
0121 775 0101



SCAN FOR MORE INFO
SIZE - 815 Sq Ft
TENURE - Freehold
COUNCIL TAX - Solihull MBC - C
BROADBAND - Upload Max 1000Mbps
 Download Max 1000Mbps
EPC - D - 67
PARKING - For at least 2 Cars
FLOODRISK - Very Low
SERVICES - Mains
COVENANTS - N/A

BRONTE CLOSE
 Offers in the region of **£300,000**

Offered with no upward chain, this property is ready to be moved into, allowing for a smooth transition for its new owners. Ideal for downsizers looking to simplify their lifestyle, this bungalow presents a fantastic opportunity to create a comfortable and welcoming living space. The property's vintage charm is evident in its 1958 construction, offering a unique character that can be enhanced with a touch of modernisation.

FEATURES

- Offered With No Upward Chain
- Requiring Updating Within
- Lounge/Dining Room
- Kitchen
- Conservatory
- Spacious Principal Bedroom & Good Sized Second Bedroom
- Shower Room
- Lovely Rear Garden
- Driveway Parking & Single Garge
- Conveniently Located

Are you an investor interested in expanding your portfolio?

Call 0121 775 0101 to provide your investment criteria for alerts.



SCAN TO VIEW OUR WEEKLY FILMS & SUBSCRIBE

Sneak Peeks

Every week, we unveil "Sneak Peeks," a feature showcasing exclusive properties before they hit Rightmove and other platforms.

The Landlord Club

Join our Landlord Club for weekly updates on legislation, market trends, and our Letting Director's 'Investment Pick of the Week' for optimal ROI.

HTSPMD

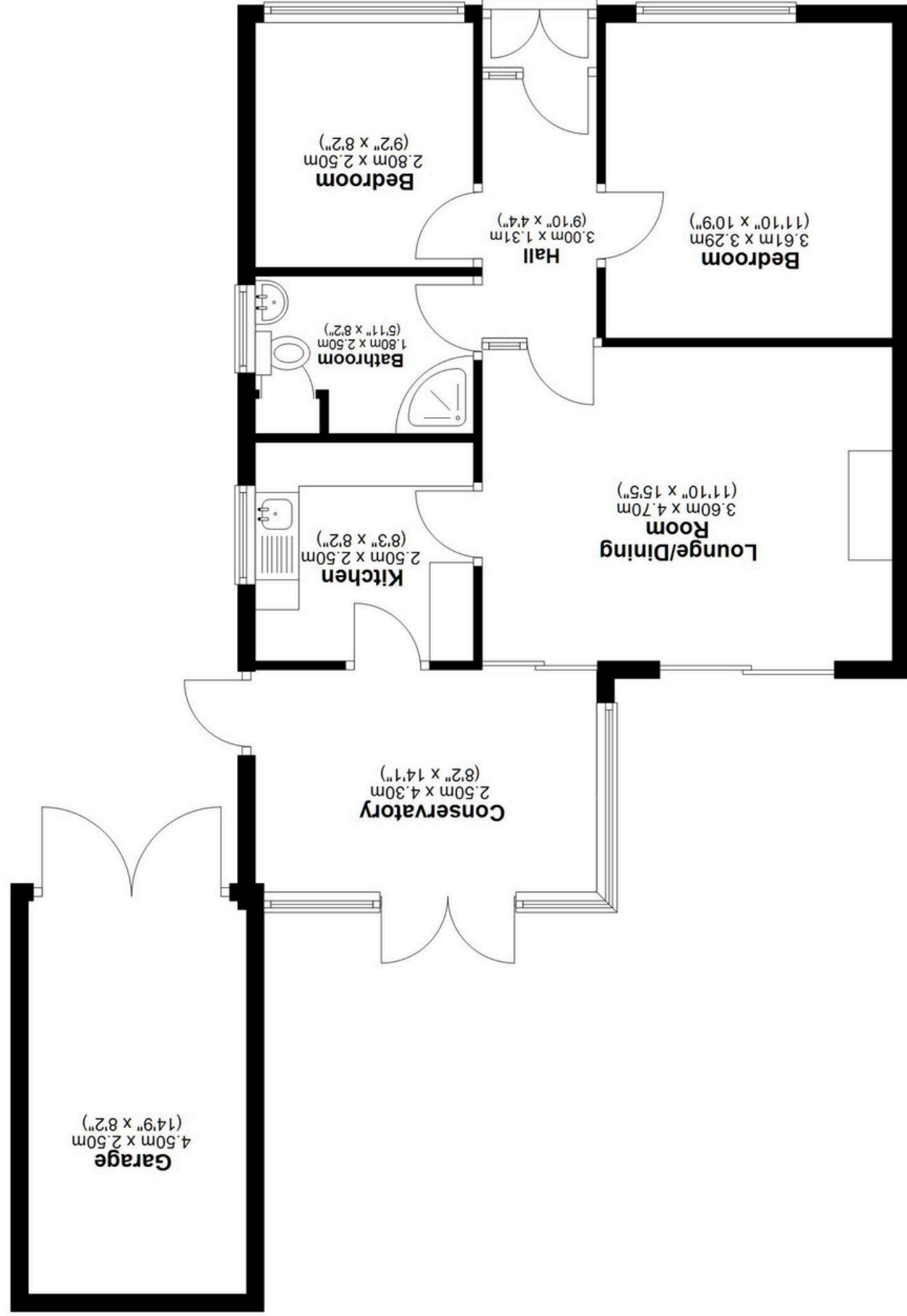
Tune into 'How's The Solihull Property Market Dom' weekly for a quick, insightful snapshot of the market.

The Mortgage Update

Get weekly insights and the best deals with our Mortgage Update, your shortcut to navigating the complex mortgage landscape confidently.

Ground Floor

Approx. 75.7 sq. metres (815.0 sq. feet)



34 Bronte Close, Shirley

Total area: approx. 75.7 sq. metres (815.0 sq. feet)