

Need a Mortgage in principle to make offers? Call us now for quick assistance!
0121 775 0101



Do you need to sell? Start your journey now! Call us we can help.
0121 775 0101



51 BUTLER ROAD

Offers in the region of £360,000



SCAN FOR MORE INFO
SIZE - 1195 Sq Ft
TENURE - Freehold
COUNCIL TAX - Solihull MBC - D
BROADBAND - Upload Max 220 MBps
Download Max 1000 Bps
MOBILE - EE Three O2 Vodafone
EPC - B - 83
PARKING - For 1 Car plus Single Garage
FLOODRISK - Very Low
SERVICES - Mains
COVENANTS - N/A

Nestled on the charming Butler Road in Solihull, this semi-detached house built in the 1930s exudes character and warmth. Boasting 2 reception rooms, 4 bedrooms, and 1 bathroom across 1,195 sq ft, this property is ideal for families looking to upsize to a spacious and inviting home.

FEATURES

- Extended Semi-Detached Property
- Tastefully Presented Throughout
- Dining Room
- Lounge Leading to Conservatory
- Modern Kitchen with Large Utility
- Three Double Bedrooms and Fourth Single
- Family Bathroom with Separate W.C.
- Private Garden with Garage to Rear
- Driveway Parking
- Convenient Location

Are you an investor interested in expanding your portfolio?

Call 0121 775 0101 to provide your investment criteria for alerts.

Sneak Peeks

Every week, we unveil "Sneak Peeks," a feature showcasing exclusive properties before they hit Rightmove and other platforms.

HTSPMD

Tune into 'How's The Solihull Property Market Dom' weekly for a quick, insightful snapshot of the market.

The Landlord Club

Join our Landlord Club for weekly updates on legislation, market trends, and our Letting Director's 'Investment Pick of the Week' for optimal ROI.

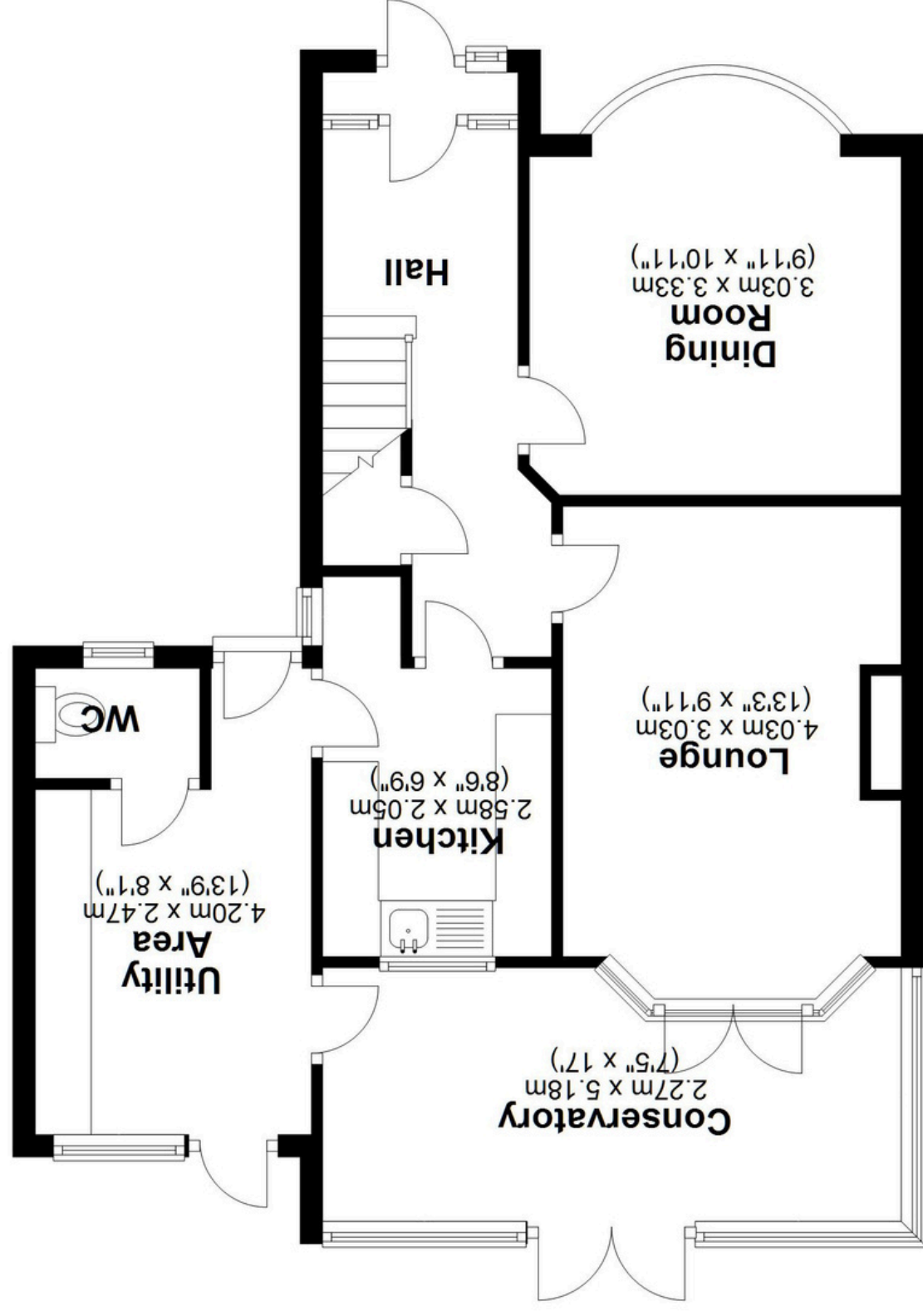
The Mortgage Update

Get weekly insights and the best deals with our Mortgage Update, your shortcut to navigating the complex mortgage landscape confidently.

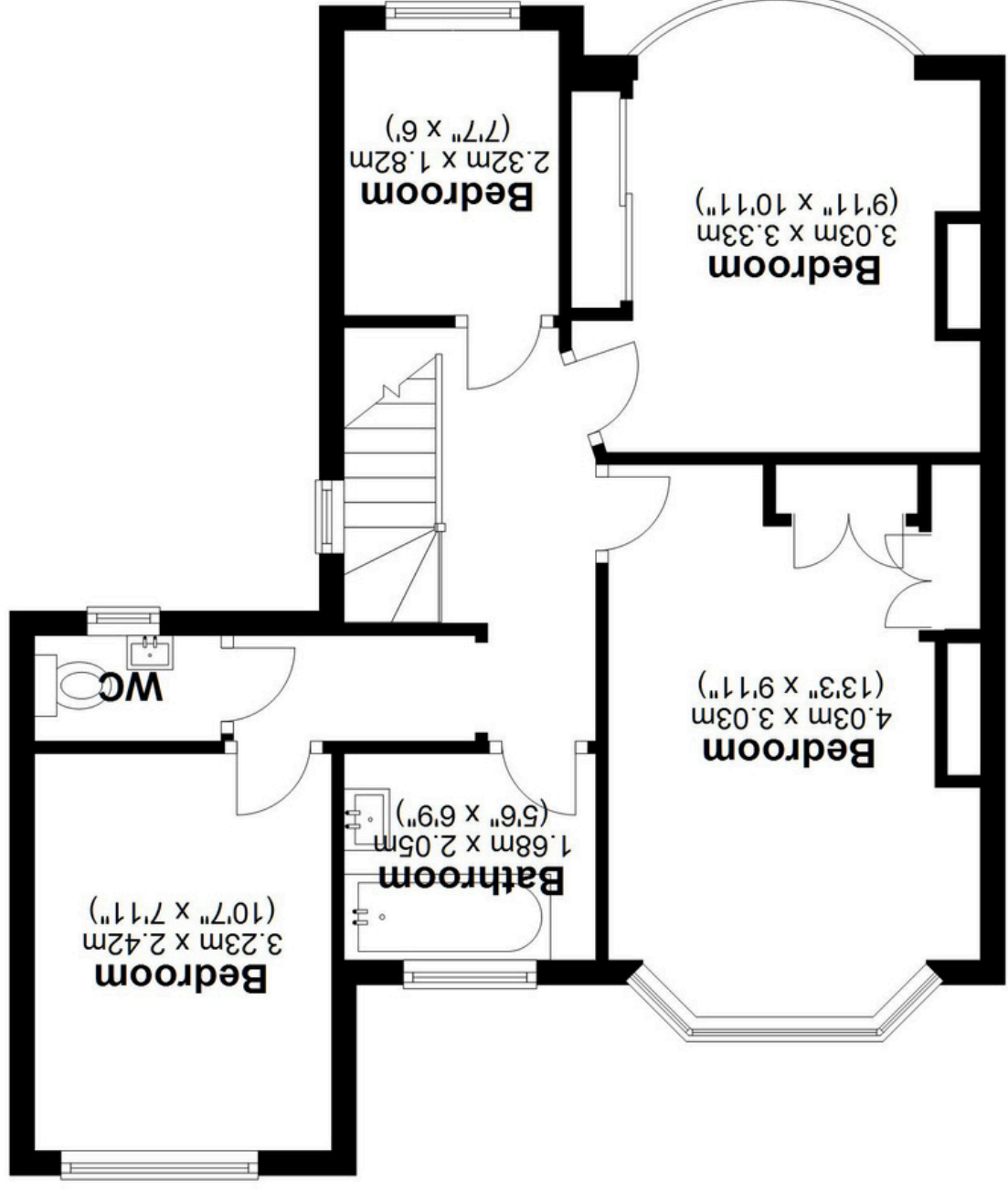


SCAN TO VIEW OUR WEEKLY FILMS & SUBSCRIBE

Ground Floor
Approx. 62.1 sq. metres (668.8 sq. feet)



First Floor
Approx. 48.9 sq. metres (526.2 sq. feet)



Total area: approx. 111.0 sq. metres (1195.0 sq. feet)

This floor plan is for illustration purposes only, this is not intended to be a measured/scaled survey or comply with RICS guidelines. All measurements (including total floor area) openings, orientation and floor area are approximate. No details are guaranteed, they cannot be relied upon for any purpose and do not form part of any agreement. A party must rely upon its own inspection(s). No responsibility is taken for any error, omission, or mis-statement.
Plan produced using PlanUp.

