

Need a Mortgage in principle to make offers? Call us now for quick assistance!  
0121 775 0101



Do you need to sell? Start your journey now! Call us we can help.  
0121 775 0101



**SCAN FOR MORE INFO**  
**SIZE** - 1098 Sq Ft  
**TENURE** - Leasehold with 994 years remaining  
**SERVICE CHARGE** - £4,208 per annum  
**COUNCIL TAX** - Solihull MBC - E  
**BROADBAND** - Upload Max 100 Mbps  
Download Max 1000 Mbps  
**MOBILE** - EE Three O2 Vodafone  
**EPC** - C - 77  
**PARKING** - Double Garage & Communal Parking Spaces  
**FLOODRISK** - Very Low  
**SERVICES** - Mains  
**COVENANTS** - N/A

Are you an investor interested in expanding your portfolio?

Call 0121 775 0101 to provide your investment criteria for alerts.

## RIVERSIDE DRIVE

Offers in the region of £350,000

Welcome to Riverside Drive - a stunning location for this spacious second-floor apartment! This property boasts two reception rooms, perfect for entertaining guests or simply relaxing with your loved ones. With three bedrooms, including one with a walk-in wardrobe, there is plenty of space for a growing family or for those who enjoy having a home office or guest room. With no upward chain, you can move in hassle-free and start enjoying all that this apartment has to offer.

### FEATURES

- Second Floor Apartment with Lift Access
- Well Equipped Modern Kitchen
- Large Lounge/Dining Room
- Re-Fitted Bathroom
- Accessible Spacious Balcony
- Secure Double Garage
- Maintained Communal Gardens
- Close to Solihull Town Centre
- No Upward Chain

### Sneak Peeks

Every week, we unveil "Sneak Peeks," a feature showcasing exclusive properties before they hit Rightmove and other platforms.

### The Landlord Club

Join our Landlord Club for weekly updates on legislation, market trends, and our Letting Director's 'Investment Pick of the Week' for optimal ROI.

### HTSPMD

Tune into 'How's The Solihull Property Market Dom' weekly for a quick, insightful snapshot of the market.

### The Mortgage Update

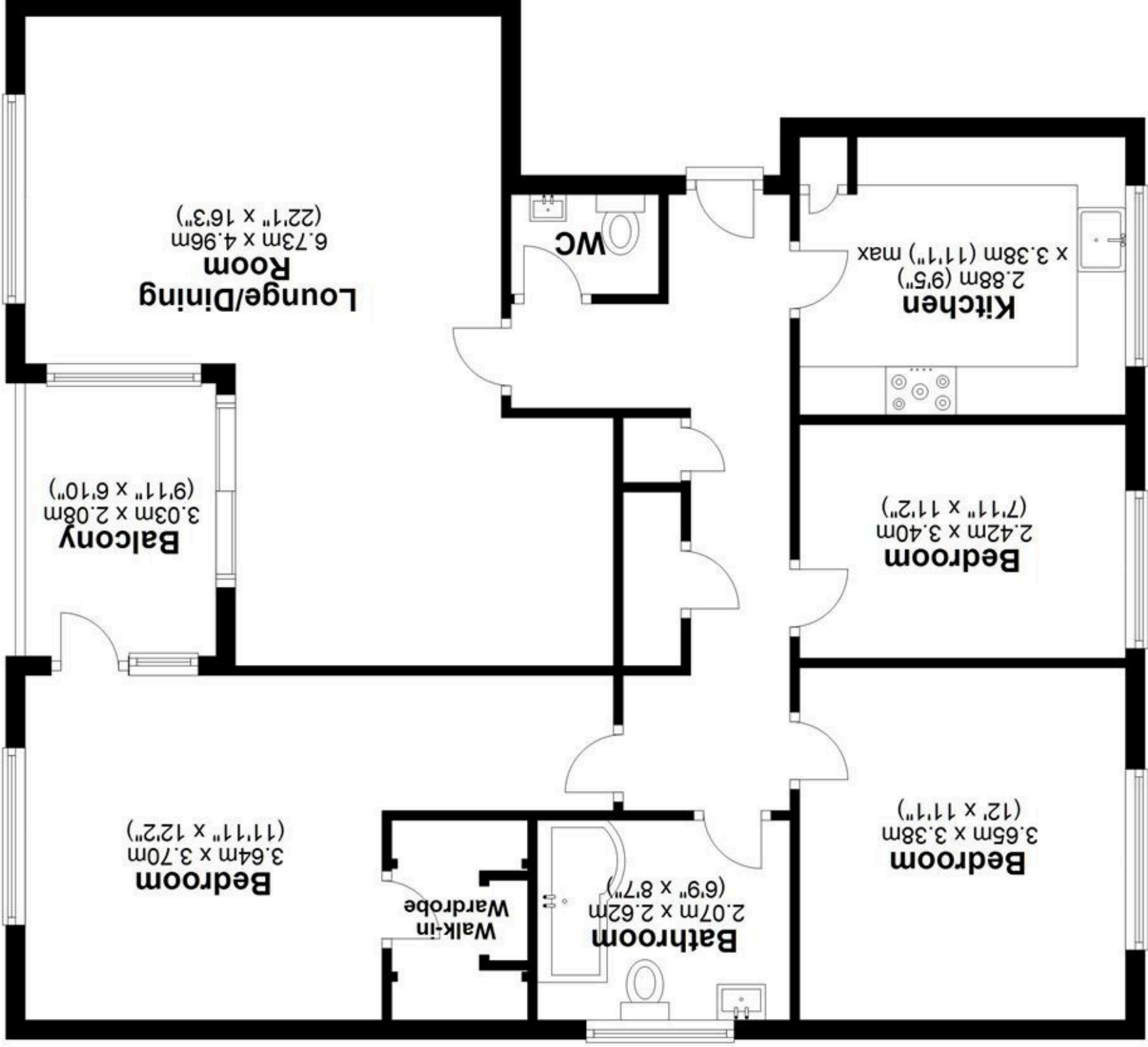
Get weekly insights and the best deals with our Mortgage Update, your shortcut to navigating the complex mortgage landscape confidently.



SCAN TO VIEW OUR WEEKLY FILMS & SUBSCRIBE



**Floor Plan**  
Approx. 102.0 sq. metres (1098.3 sq. feet)



Total area: approx. 102.0 sq. metres (1098.3 sq. feet)

This floor plan is for illustration purposes only, this is not intended to be a measured/scaled survey or comply with RICS guidelines. All measurements (including total floor area) openings, orientation and floor area are approximate. No details are guaranteed, they cannot be relied upon for any purpose and do not form part of any agreement. A party must rely upon its own inspection(s). No responsibility is taken for any error, omission, or mis-statement.  
Plan produced using PlanUp.