

Need a Mortgage in principle to make offers? Call us now for quick assistance!  
0121 775 0101



Do you need to sell? Start your journey now! Call us we can help.  
0121 775 0101



**SCAN FOR MORE INFO**  
**SIZE** - 2526 Sq Ft  
**TENURE** - Freehold  
**COUNCIL TAX** - Solihull MBC - G  
**BROADBAND** - Upload Max 1000 Mbps  
 Download Max 1000 Mbps  
**MOBILE** - O2 Vodaphone  
**EPC** - D - 65  
**PARKING** - For at least 4 Cars  
**FLOODRISK** - Very Low  
**SERVICES** - Mains  
**COVENANTS** - N/A

## SILHILL HALL ROAD

Offers in the region of £850,000

Nestled on the prestigious Silhill Hall Road in Solihull, this stunning detached house offers a perfect blend of traditional charm and modern comfort. Boasting 3 reception rooms, including a delightful conservatory, this property provides ample space for entertaining guests or simply relaxing with your loved ones.

### FEATURES

- Popular Road in Solihull
- Traditional Detached Property set Behind Gates
- 3 Reception Rooms & Conservatory
- Fitted Kitchen
- Four First Floor Bedrooms
- Family Bathroom & Separate W.C.
- Second Floor Bedroom/TV/Teenage Room
- Stunning Private Mature Rear Garden
- Driveway Parking and 2 Single Garages
- Convenient Location

Are you an investor interested in expanding your portfolio?

Call 0121 775 0101 to provide your investment criteria for alerts.



SCAN TO VIEW OUR WEEKLY FILMS & SUBSCRIBE

### Sneak Peeks

Every week, we unveil "Sneak Peeks," a feature showcasing exclusive properties before they hit Rightmove and other platforms.

### The Landlord Club

Join our Landlord Club for weekly updates on legislation, market trends, and our Letting Director's 'Investment Pick of the Week' for optimal ROI.

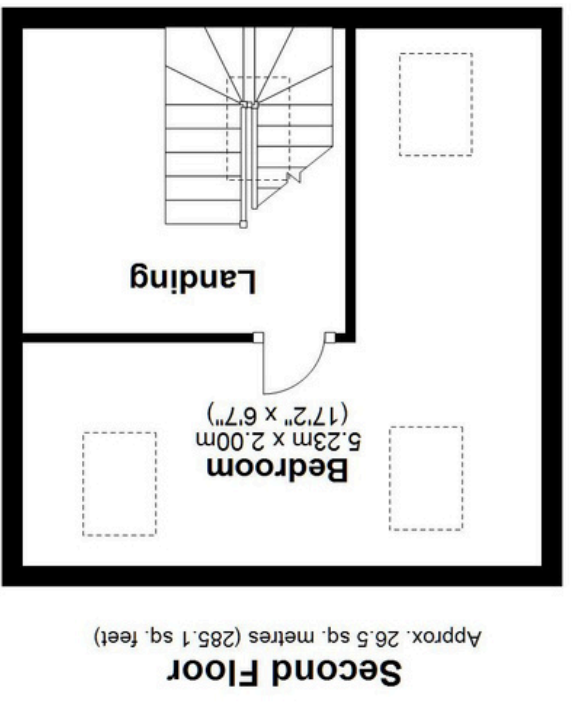
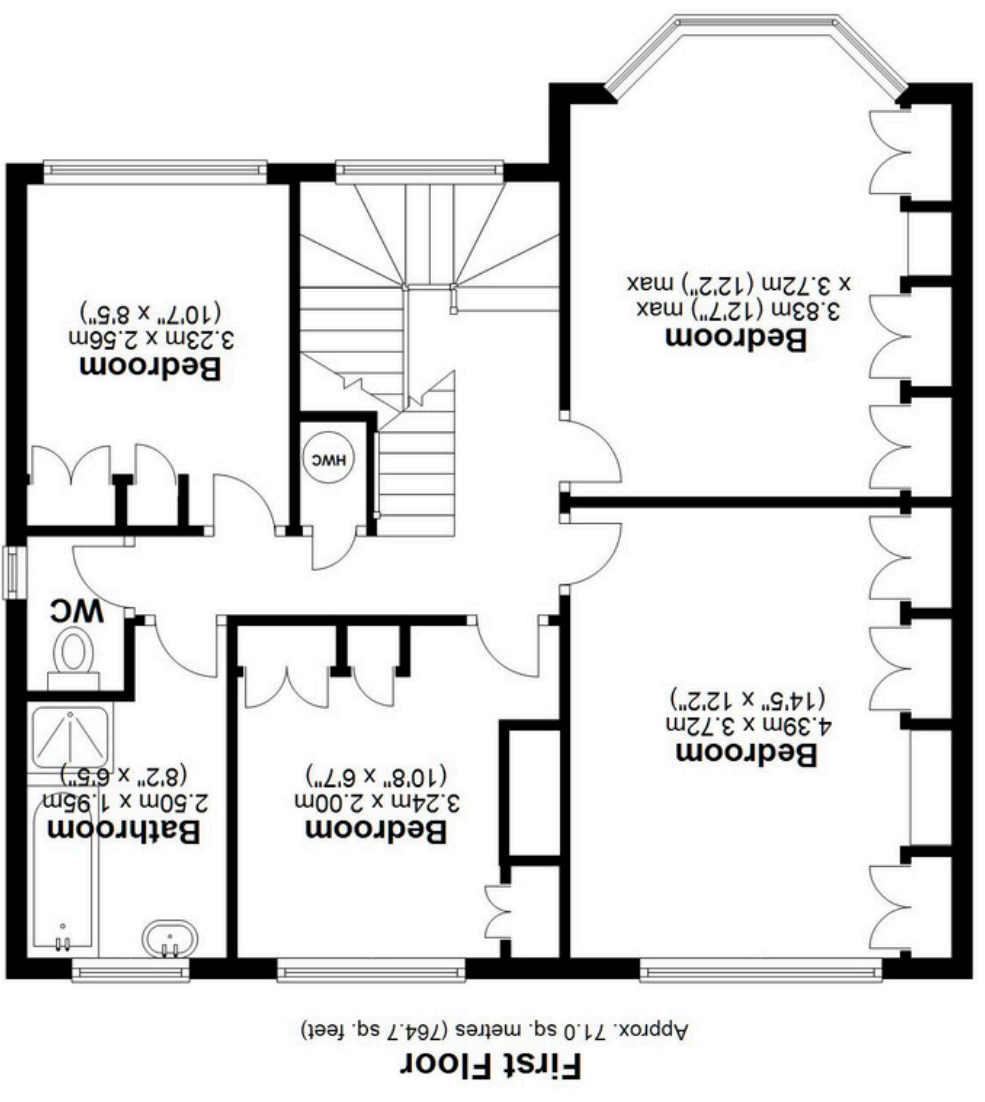
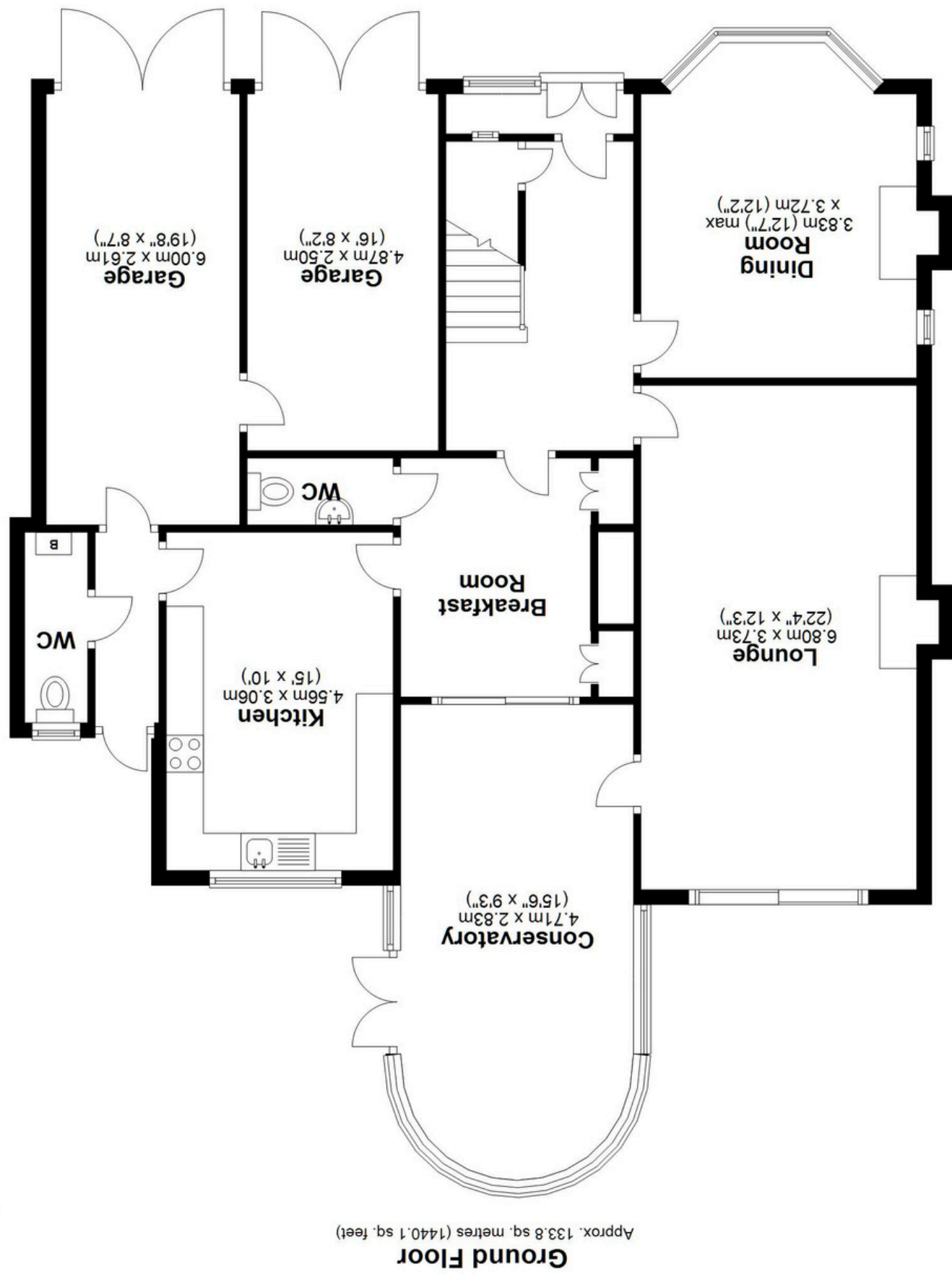
### HTSPMD

Tune into 'How's The Solihull Property Market Dom' weekly for a quick, insightful snapshot of the market.

### The Mortgage Update

Get weekly insights and the best deals with our Mortgage Update, your shortcut to navigating the complex mortgage landscape confidently.





Total area: approx. 231.3 sq. metres (2489.9 sq. feet)

This floor plan is for illustration purposes only, this is not intended to be a measured/scaled survey or comply with RICS guidelines. All measurements (including total floor area) openings, orientation and floor area are approximate. No details are guaranteed, they cannot be relied upon for any purpose and do not form part of any agreement. A party must rely upon its own inspection(s). No responsibility is taken for any error, omission, or mis-statement.  
Plan produced using PlanUp.

