

Need a Mortgage in principle to make offers? Call us now for quick assistance!
0121 775 0101



Do you need to sell? Start your journey now! Call us we can help.
0121 775 0101



SCAN FOR MORE INFO
SIZE - 1523 Sq Ft
TENURE - Freehold
COUNCIL TAX - Solihull MBC - E
BROADBAND - Upload Max 1000 Mbps
 Download Max 1000 Mbps
MOBILE - O2 Vodaphone
EPC - D - 61
PARKING - For at least 2 Cars
FLOODRISK - Very Low
SERVICES - Mains
COVENANTS - N/A

LADBROOK ROAD

Asking Price £625,000

Nestled in the charming Ladbrook Road of Solihull, this semi-detached house from the 1930s is a true gem waiting to be discovered. Boasting two reception rooms, four bedrooms and two bathrooms this property offers ample space for a growing family. In conclusion, this fabulous family home offers a perfect blend of character, space and comfort.

FEATURES

- Extended Semi-Detached Property
- Lounge with Bay Window
- Large Kitchen/Dining Room with Additional Room Off
- Utility, Guest Cloakroom & Extra Storage (Converted from Garage)
- Two Spacious Double Bedrooms & Third Single
- Family Bathroom
- Principal Bedroom with En-Suite Shower Room to Second Floor
- Private Rear Garden with Summerhouse
- Driveway Parking
- Walking Distanceto Solihull Town Centre
- EV Charging Point

Are you an investor interested in expanding your portfolio?

Call 0121 775 0101 to provide your investment criteria for alerts.



Sneak Peeks

Every week, we unveil "Sneak Peeks," a feature showcasing exclusive properties before they hit Rightmove and other platforms.

The Landlord Club

Join our Landlord Club for weekly updates on legislation, market trends, and our Letting Director's 'Investment Pick of the Week' for optimal ROI.

HTSPMD

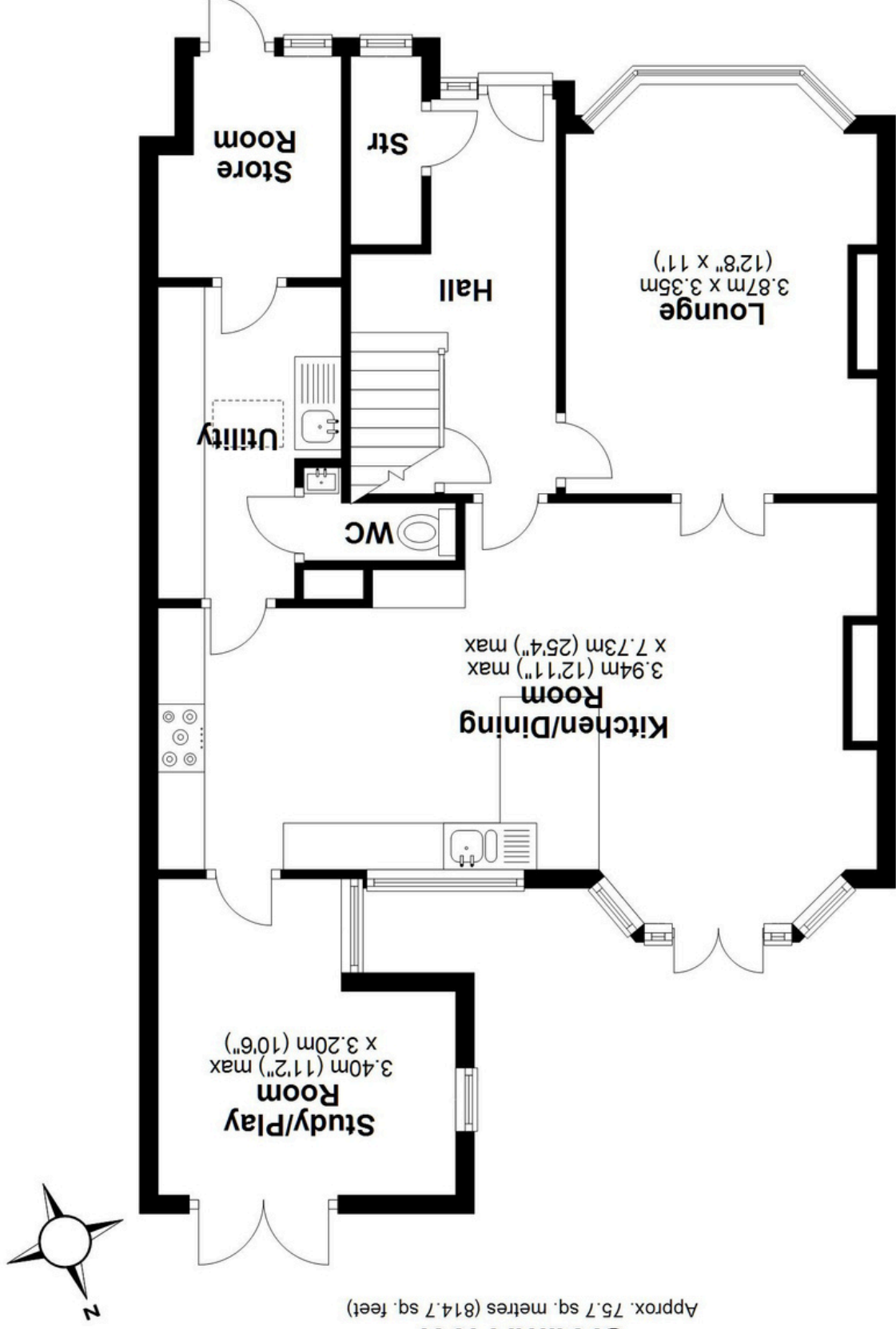
Tune into 'How's The Solihull Property Market Dom' weekly for a quick, insightful snapshot of the market.

The Mortgage Update

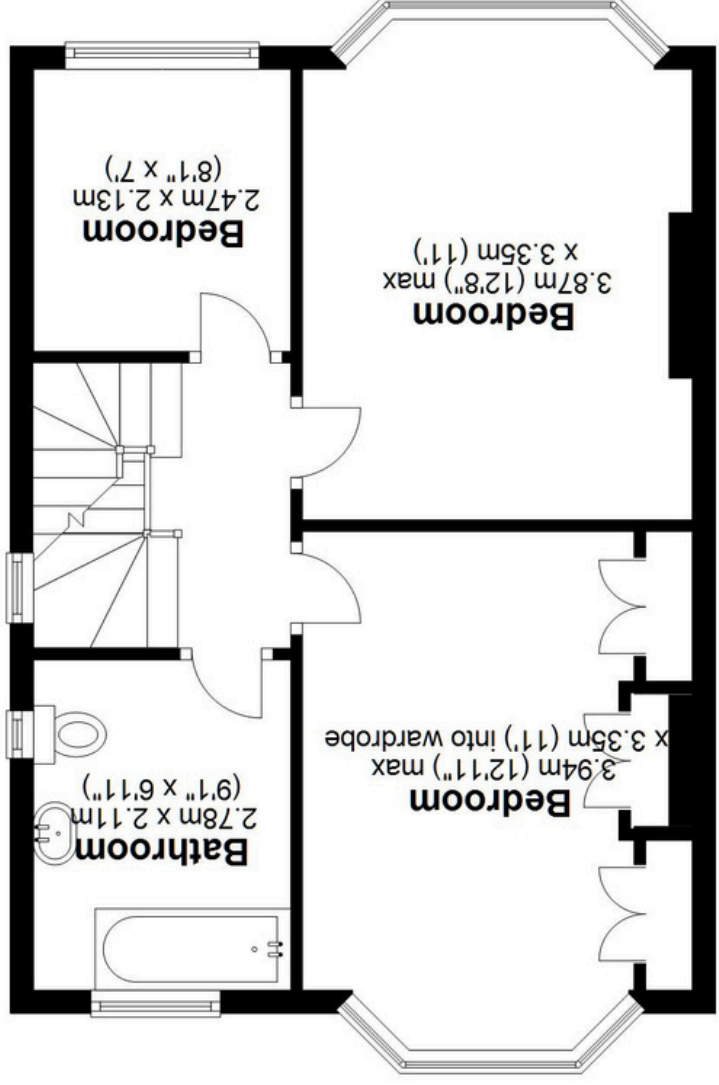
Get weekly insights and the best deals with our Mortgage Update, your shortcut to navigating the complex mortgage landscape confidently.

SCAN TO VIEW OUR WEEKLY FILMS & SUBSCRIBE

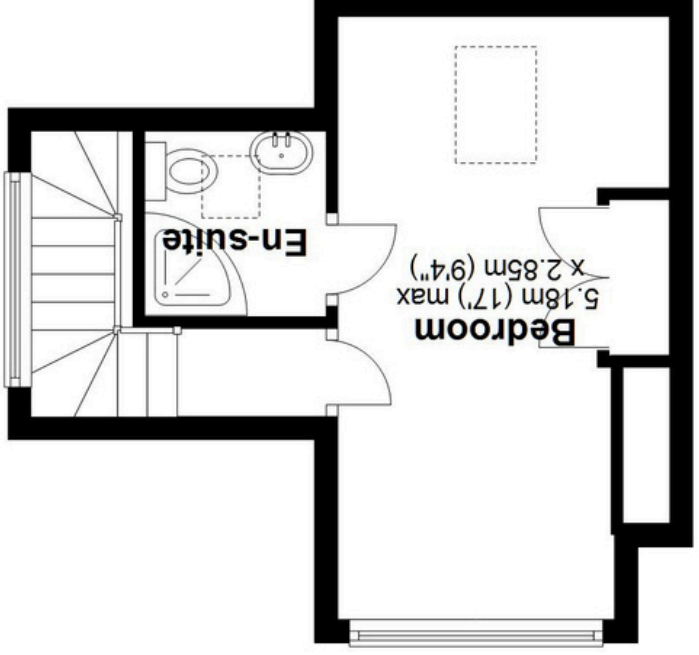
Ground Floor
Approx. 75.7 sq. metres (814.7 sq. feet)



First Floor
Approx. 45.2 sq. metres (486.1 sq. feet)



Second Floor
Approx. 20.7 sq. metres (222.5 sq. feet)



Total area: approx. 141.5 sq. metres (1523.3 sq. feet)

This floor plan is for illustration purposes only, this is not intended to be a measured/scaled survey or comply with RICS guidelines. All measurements (including total floor area) openings, orientation and floor area are approximate. No details are guaranteed, they cannot be relied upon for any purpose and do not form part of any agreement. A party must rely upon its own inspection(s). No responsibility is taken for any error, omission, or mis-statement.

Plan produced using PlanUp.