

Need a Mortgage in principle to make offers? Call us now for quick assistance!  
0121 775 0101



Do you need to sell? Start your journey now! Call us we can help.  
0121 775 0101



**SCAN FOR MORE INFO**  
**SIZE** - 1793 Sq Ft  
**TENURE** - Freehold  
**COUNCIL TAX** - Solihull MBC - F  
**BROADBAND** - Upload Max 1000 Mbps  
 Download Max 1000 Mbps  
**EPC** - D - 63  
**PARKING** - For at least 4 Cars  
**FLOODRISK** - Very Low  
**SERVICES** - Mains  
**COVENANTS** - N/A

## MARSH LANE

Offers in the region of £750,000

Nestled in the charming Marsh Lane in Solihull, this traditional detached house is a true gem waiting to be discovered. Boasting 2 reception rooms and 4 bedrooms spread, this property offers ample space for comfortable living. With the property's age dating back to the 1930s, you'll appreciate the character and charm that comes with a home of this era. Additionally, the planning permission for a loft extension opens up exciting possibilities for customising the space to suit your needs and preferences.

### FEATURES

- Traditional Detached with a Contemporary Feel
- Popular Residential Road in Solihull
- Stunning Kitchen/Dining Room with Utility
- Spacious Lounge
- Dining Room
- Three Good Sized Bedrooms
- Fourth Single Bedroom
- Family Bathroom & W.C.
- Private Rear Garden
- Driveway Parking and Single Garage
- Excellent Location

Are you an investor interested in expanding your portfolio?

Call 0121 775 0101 to provide your investment criteria for alerts.



SCAN TO VIEW OUR WEEKLY FILMS & SUBSCRIBE

### Sneak Peeks

Every week, we unveil "Sneak Peeks," a feature showcasing exclusive properties before they hit Rightmove and other platforms.

### The Landlord Club

Join our Landlord Club for weekly updates on legislation, market trends, and our Letting Director's 'Investment Pick of the Week' for optimal ROI.

### HTSPMD

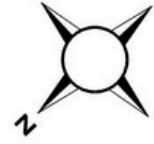
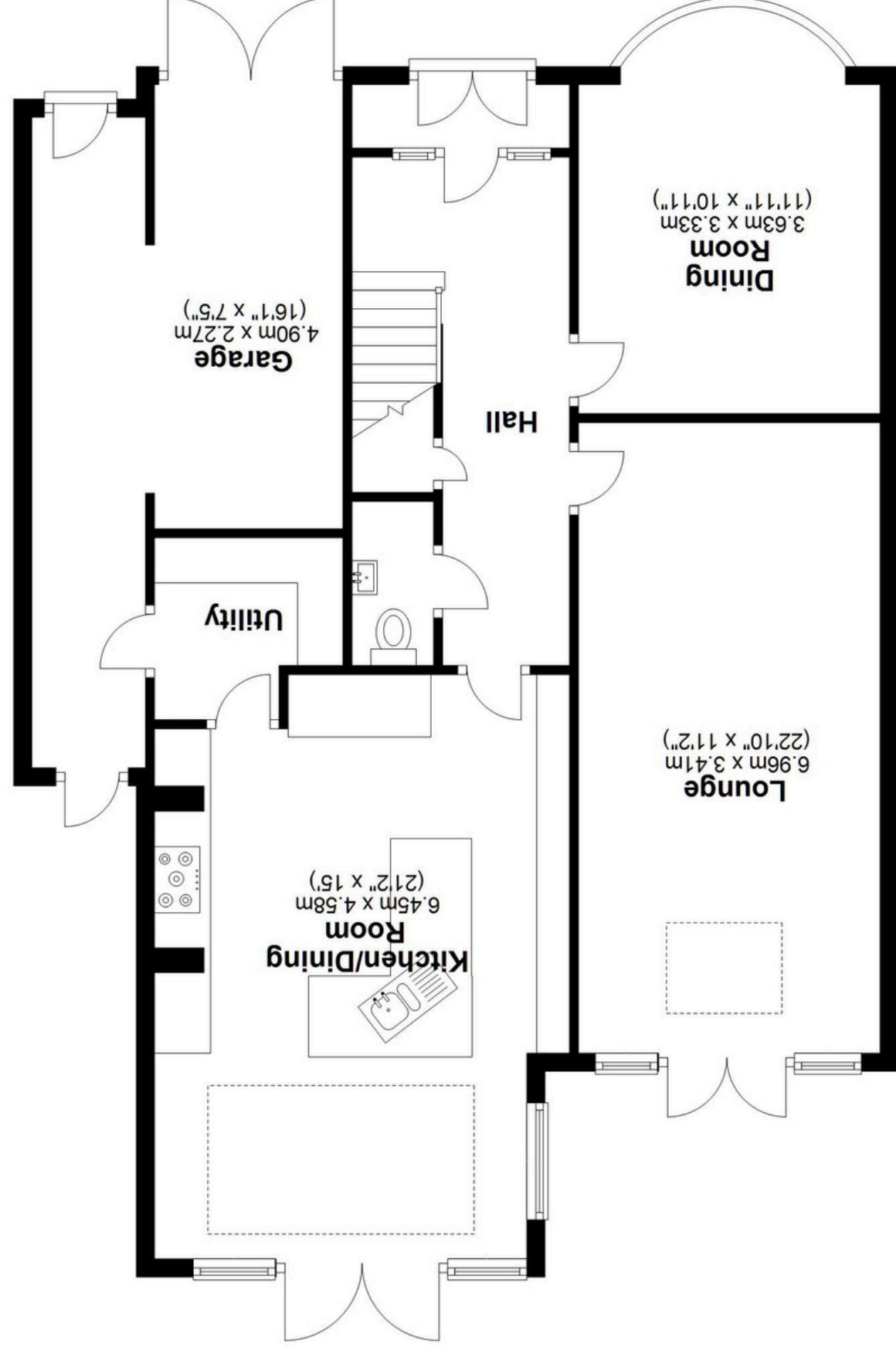
Tune into 'How's The Solihull Property Market Dom' weekly for a quick, insightful snapshot of the market.

### The Mortgage Update

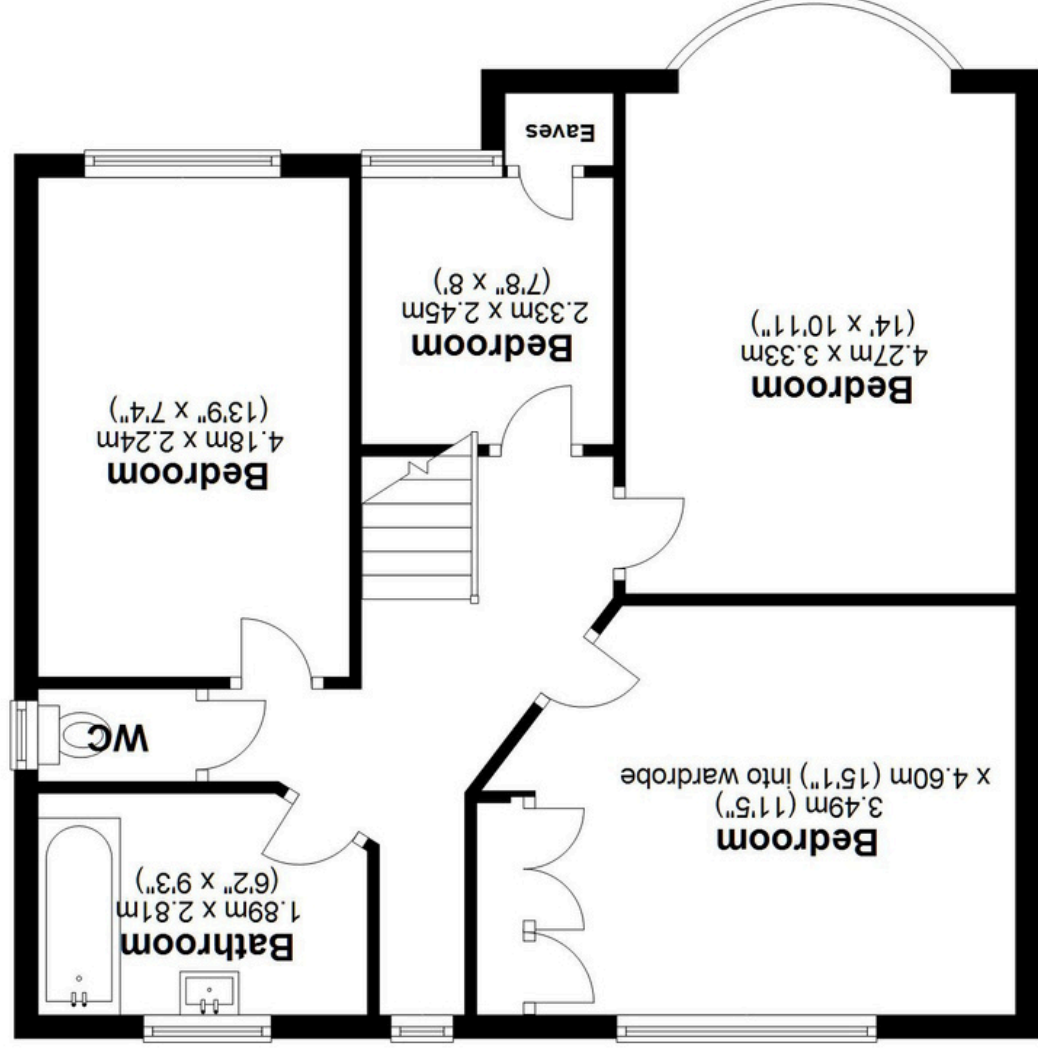
Get weekly insights and the best deals with our Mortgage Update, your shortcut to navigating the complex mortgage landscape confidently.



**Ground Floor**  
Approx. 104.6 sq. metres (1126.4 sq. feet)



**First Floor**  
Approx. 61.9 sq. metres (666.6 sq. feet)



Total area: approx. 166.6 sq. metres (1793.0 sq. feet)

This floor plan is for illustration purposes only, this is not intended to be a measured/scaled survey or comply with RICS guidelines. All measurements (including total floor area) openings, orientation and floor area are approximate. No details are guaranteed, they cannot be relied upon for any purpose and do not form part of any agreement. A party must rely upon its own inspection(s). No responsibility is taken for any error, omission, or mis-statement.

Plan produced using PlanUp.