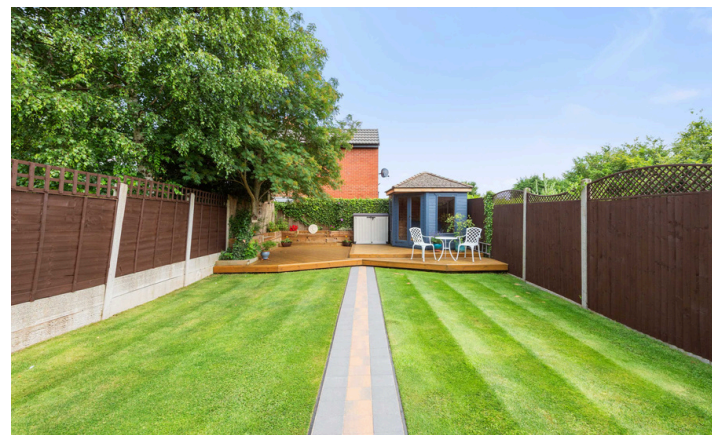


Need a Mortgage in principle to make offers? Call us now for quick assistance!
0121 775 0101



Do you need to sell? Start your journey now! Call us we can help.
0121 775 0101



SCAN FOR MORE INFO
SIZE - 1318 Sq Ft
TENURE - Freehold
COUNCIL TAX - Solihull MBC - C
BROADBAND - Upload Max 1000 Mbps
 Download Max 1000 Mbps
MOBILE - EE O2 Vodafone
EPC - D - 82
PARKING - For at least 2 Cars
FLOODRISK - Very Low
SERVICES - Mains
COVENANTS - N/A

ARDEN OAK ROAD

Offers Over £360,000

Nestled on the charming Arden Oak Road in Sheldon, this semi-detached house is a true gem waiting to be discovered. With an excellent specification throughout, this property is sure to impress even the most discerning buyer. Don't miss the opportunity to make this stunning house your home. 'Attention to detail' is the key phrase when describing this property.

FEATURES

- Renovated & Extended Family Home
- Excellent Specification Throughout
- Dual Aspect Lounge/Dining Room
- Stunning Breakfast Kitchen with Utility
- Guest Cloakroom
- Two Double Bedrooms
- Third Single Bedroom
- Modern Family Four Piece Bathroom
- Landscaped Rear Garden
- Driveway Parking with Garage Store
- Must be Viewed!

Are you an investor interested in expanding your portfolio?

Call 0121 775 0101 to provide your investment criteria for alerts.



SCAN TO VIEW OUR WEEKLY FILMS & SUBSCRIBE

Sneak Peeks

Every week, we unveil "Sneak Peeks," a feature showcasing exclusive properties before they hit Rightmove and other platforms.

The Landlord Club

Join our Landlord Club for weekly updates on legislation, market trends, and our Letting Director's 'Investment Pick of the Week' for optimal ROI.

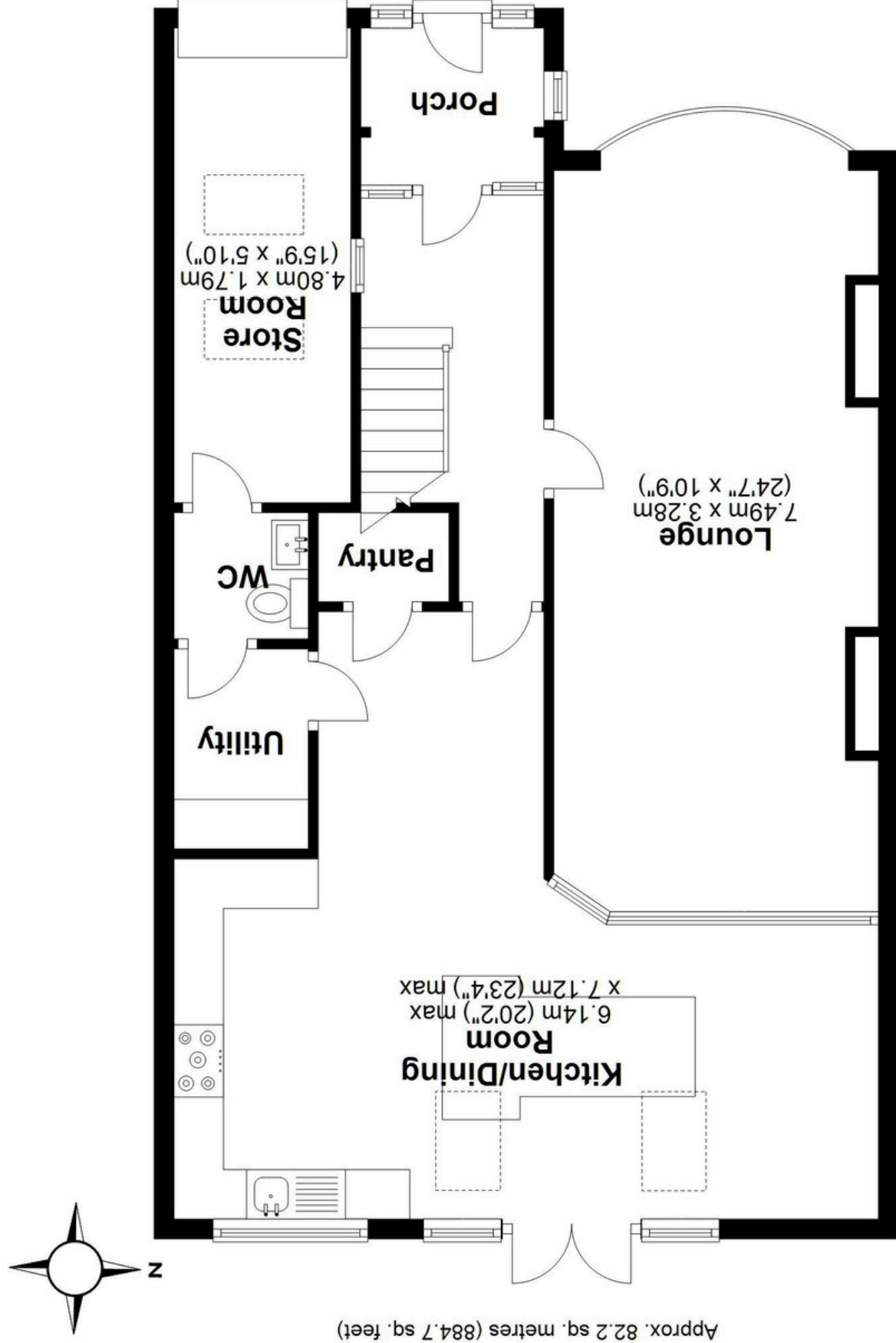
HTSPMD

Tune into 'How's The Solihull Property Market Dom' weekly for a quick, insightful snapshot of the market.

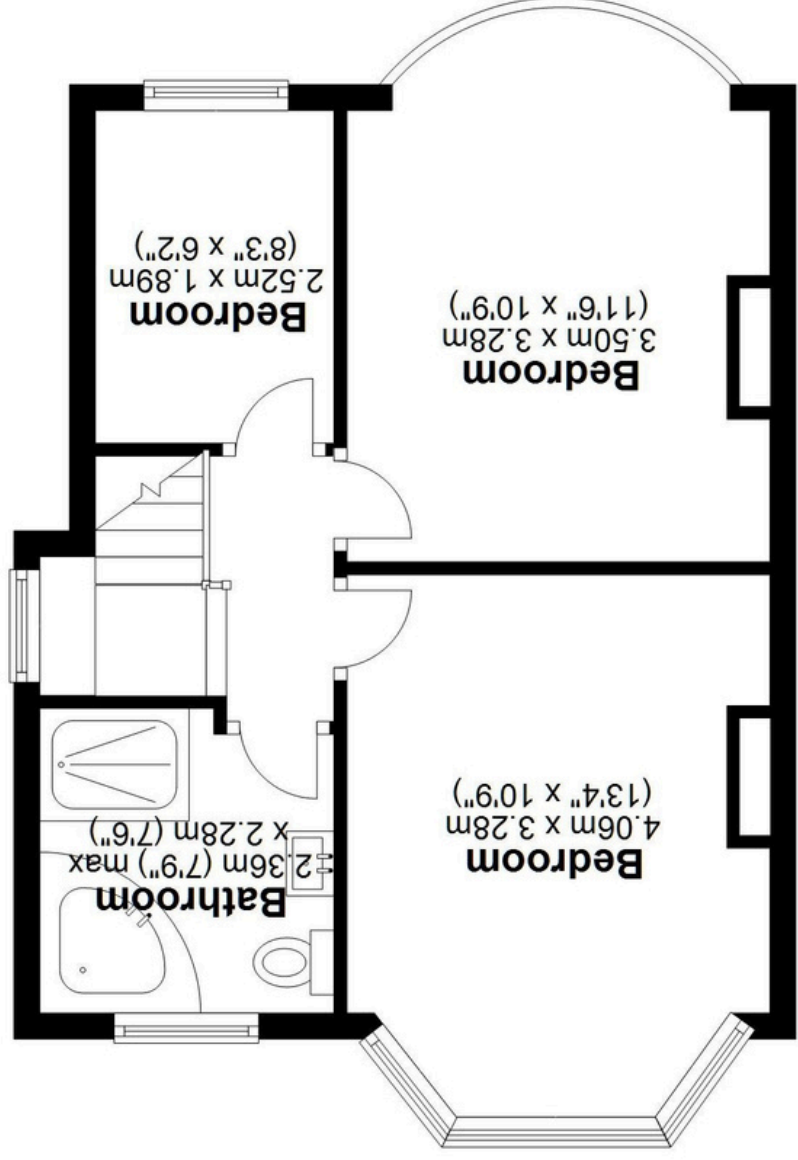
The Mortgage Update

Get weekly insights and the best deals with our Mortgage Update, your shortcut to navigating the complex mortgage landscape confidently.

Ground Floor
Approx. 82.2 sq. metres (884.7 sq. feet)



First Floor
Approx. 40.3 sq. metres (433.8 sq. feet)



Total area: approx. 122.5 sq. metres (1318.5 sq. feet)

This floor plan is for illustration purposes only, this is not intended to be a measured/scaled survey or comply with RICS guidelines. All measurements (including total floor area) openings, orientation and floor area are approximate. No details are guaranteed, they cannot be relied upon for any purpose and do not form part of any agreement. A party must rely upon its own inspection(s). No responsibility is taken for any error, omission, or mis-statement.

Plan produced using PlanUp.