

Need a Mortgage in principle to make offers? Call us now for quick assistance!  
0121 775 0101



Do you need to sell? Start your journey now! Call us we can help.  
0121 775 0101



**SCAN FOR MORE INFO**  
**SIZE** - 1242 Sq Ft  
**TENURE** - Freehold  
**COUNCIL TAX** - Solihull MBC - C  
**BROADBAND** - Upload Max 1000 Mbps  
 Download Max 1000 Mbps  
**MOBILE** - EE Three Vodafone  
**EPC** - D - 62  
**PARKING** - Single Garage & Parking for 2 Cars  
**FLOODRISK** - Very Low  
**SERVICES** - Mains  
**COVENANTS** - N/A

Are you an investor interested in expanding your portfolio?

Call 0121 775 0101 to provide your investment criteria for alerts.

## BROOMFIELDS AVENUE

Offers in the region of £425,000

Situated in the heart of Solihull town centre, convenience is at your doorstep with shops, restaurants and amenities just a stone's throw away. The property's beautifully presented interior is sure to captivate you from the moment you step inside, offering a warm and inviting atmosphere that is ready to move into.

### FEATURES

- Beautiful Character Home with a Contemporary Feel
- Spacious Lounge/Dining Room
- Stunning Breakfast Kitchen
- Guest Cloakroom
- Three Double Bedrooms
- Two Fitted Wardrobes to Principal Bedroom
- Four Piece Family Bathroom
- Low Maintenance Rear Garden with Outbuilding
- Parking to Rear with Single Garage
- Central Solihull Location

### Sneak Peeks

Every week, we unveil "Sneak Peeks," a feature showcasing exclusive properties before they hit Rightmove and other platforms.

### The Landlord Club

Join our Landlord Club for weekly updates on legislation, market trends, and our Letting Director's 'Investment Pick of the Week' for optimal ROI.

### HTSPMD

Tune into 'How's The Solihull Property Market Dom' weekly for a quick, insightful snapshot of the market.

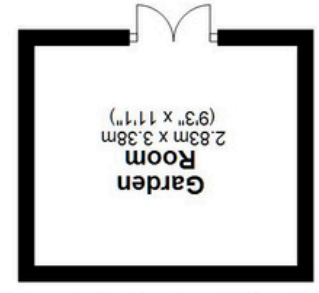
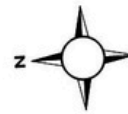
### The Mortgage Update

Get weekly insights and the best deals with our Mortgage Update, your shortcut to navigating the complex mortgage landscape confidently.

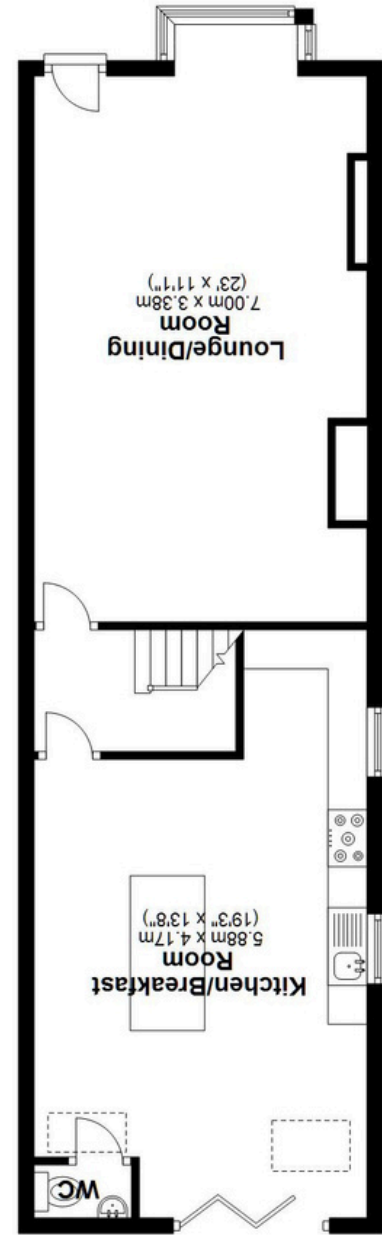


SCAN TO VIEW OUR WEEKLY FILMS & SUBSCRIBE



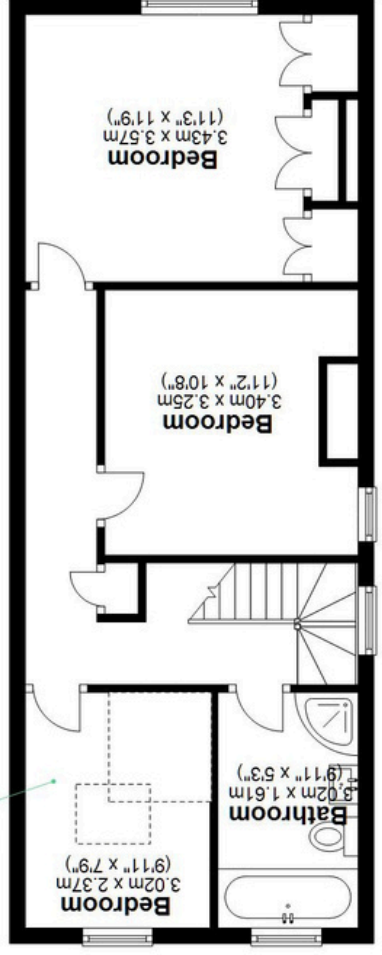


**Ground Floor**  
Main area: approx. 66.0 sq. metres (710.1 sq. feet)  
Plus garden room, approx. 8.6 sq. metres (103.0 sq. feet)



**Main area: Approx. 115.4 sq. metres (1242.3 sq. feet)**  
Plus garden room, approx. 9.6 sq. metres (103.0 sq. feet)

This floor plan is for illustration purposes only, this is not intended to be a measured/scaled survey or comply with RICS guidelines. All measurements (including total floor area) openings, orientation and floor area are approximate. No details are guaranteed, they cannot be relied upon for any purpose and do not form part of any agreement. A party must rely upon its own inspection(s). No responsibility is taken for any error, omission, or mis-statement.  
Plan produced using PlanlP.



**First Floor**  
Approx. 49.4 sq. metres (532.1 sq. feet)