

Need a Mortgage in principle to make offers? Call us now for quick assistance!
0121 775 0101



Do you need to sell? Start your journey now! Call us we can help.
0121 775 0101



SCAN FOR MORE INFO
SIZE - 839 Sq Ft
TENURE - Freehold
COUNCIL TAX - Solihull MBC - D
BROADBAND - Upload Max 1000 Mbps
 Download Max 1000 Mbps
MOBILE - EE Vodafone
EPC - D - 63
PARKING - Single Garage & 2 Spaces
FLOODRISK - Very Low
SERVICES - Mains
COVENANTS - N/A

GILMORTON CLOSE

Offers Over £385,000

Welcome to Gilmorton Close - a charming property nestled in the popular Hillfield location. This end terrace house, built in 1991, boasts a tasteful interior and is located in the Tudor Grange School catchment area. This property is perfect for families looking to secure a spot in a reputable school for their children.

FEATURES

- End Terrace Property
- Tudor Grange Academy Catchment
- Bright Lounge
- Kitchen/Diner
- Two Double Bedrooms
- Third Single Bedroom
- Modern Bathroom
- Wrap Around Garden
- Single Garage and 2 Allocated Parking Spaces
- Popular Hillfield Location

Are you an investor interested in expanding your portfolio?

Call 0121 775 0101 to provide your investment criteria for alerts.



SCAN TO VIEW OUR WEEKLY FILMS & SUBSCRIBE

Sneak Peeks

Every week, we unveil "Sneak Peeks," a feature showcasing exclusive properties before they hit Rightmove and other platforms.

The Landlord Club

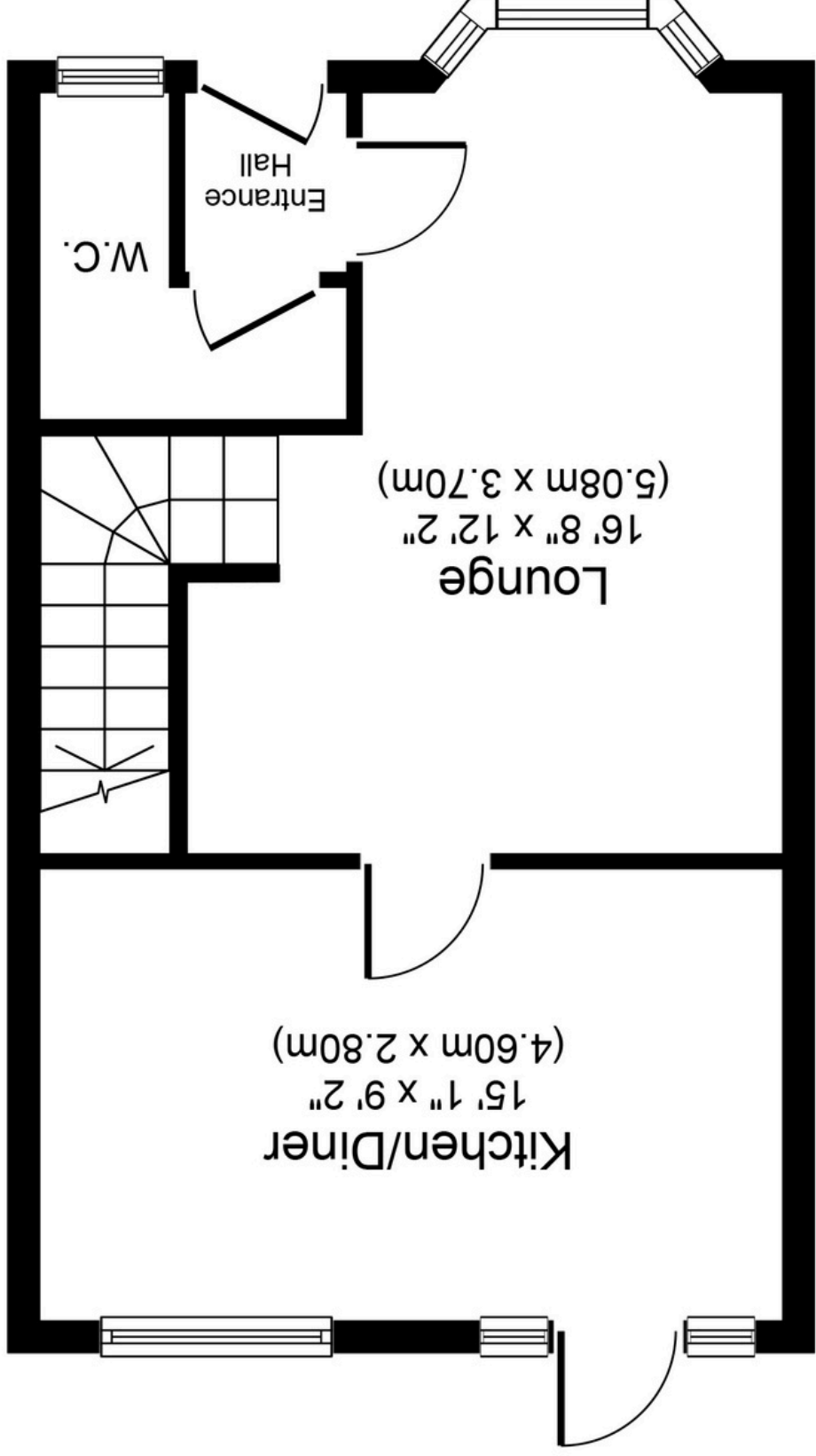
Join our Landlord Club for weekly updates on legislation, market trends, and our Letting Director's 'Investment Pick of the Week' for optimal ROI.

HTSPMD

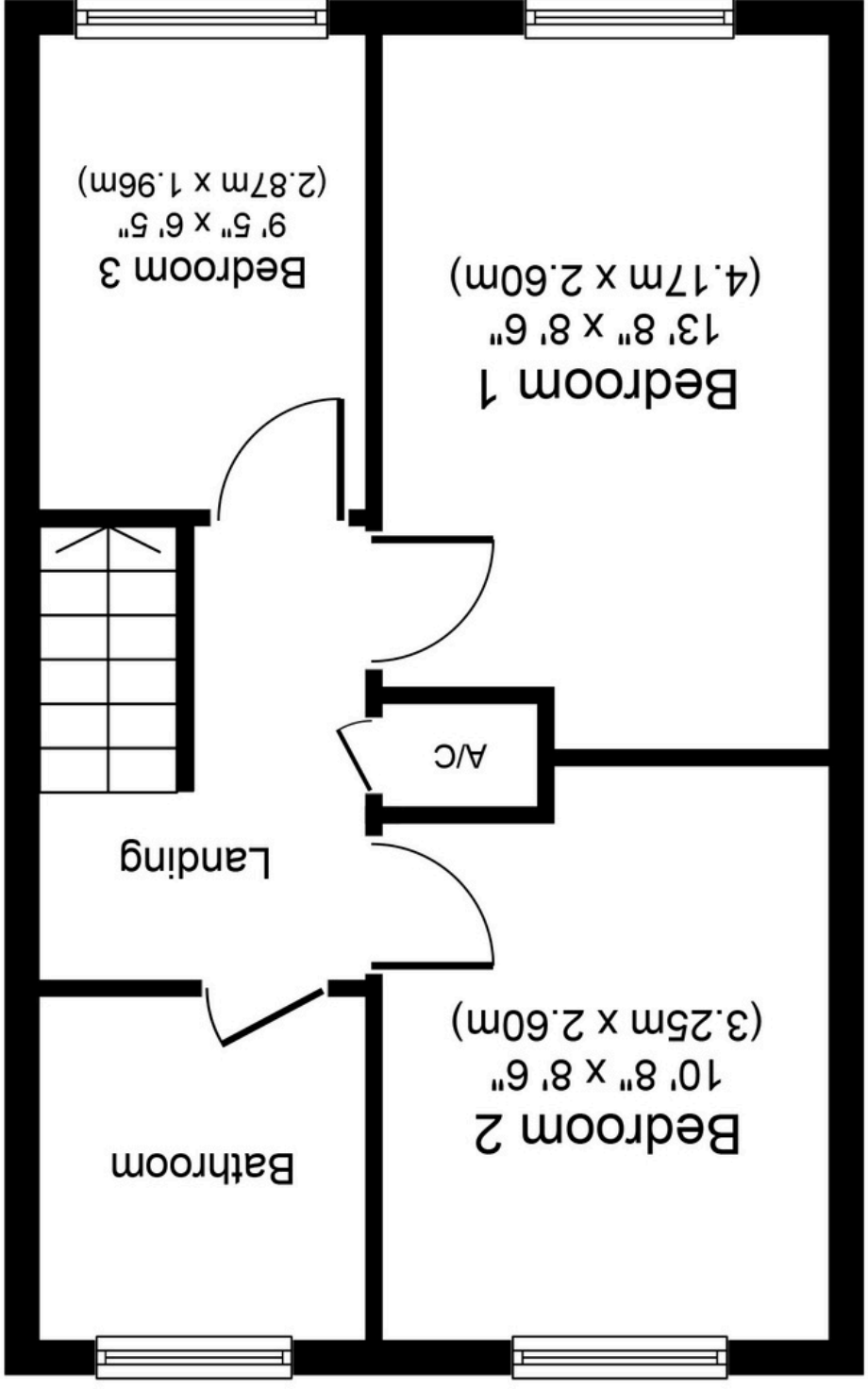
Tune into 'How's The Solihull Property Market Dom' weekly for a quick, insightful snapshot of the market.

The Mortgage Update

Get weekly insights and the best deals with our Mortgage Update, your shortcut to navigating the complex mortgage landscape confidently.



Ground Floor
383 sq. ft.
Approximate Floor Area
(36.6 sq. m.)



First Floor
377 sq. ft.
Approximate Floor Area
(35.1 sq. m.)

Whilst every attempt has been made to ensure the accuracy of the floor plan contained here, measurements of doors, windows, rooms and any other items are approximate and no responsibility is taken for any error, omission, or mis-statement. The measurements should not be relied upon for valuation, transaction and/or funding purposes. This plan is for illustrative purposes only and should be used as such by any prospective purchaser or tenant. The services, systems and appliances shown have not been tested and no guarantee as to their operability or efficiency can be given.