

Need a Mortgage in principle to make offers? Call us now for quick assistance!
0121 775 0101



Do you need to sell? Start your journey now! Call us we can help.
0121 775 0101



SCAN FOR MORE INFO
SIZE - 2057 Sq Ft
TENURE - Freehold
COUNCIL TAX - Solihull MBC - G
BROADBAND - Upload Max 1000 Mbps
Download Max 1000 Mbps
MOBILE - EE Three O2 Vodafone
EPC - E - 54
PARKING - For several vehicles
FLOODRISK - Very Low
SERVICES - Mains
COVENANTS - N/A

SILHILL HALL ROAD

Asking Price £845,000

Welcome to this charming detached house on Silhill Hall Road in Solihull. Stepping back in time, this house was built in the 1930s, exuding character and history. Spanning over 2,000 sq.ft, there is plenty of room for the whole family to spread out and make memories.

FEATURES

- Beautiful Character Property
- Two Reception Rooms
- Stunning Breakfast Kitchen
- Study/TV/Play Room
- Utility Area
- Four First Floor Double Bedrooms with Bathroom
- Second Floor Fifth Bedroom with Bathroom
- Ample Driveway Parking with Single Garage
- Private Rear Garden
- Excellent Location

Are you an investor interested in expanding your portfolio?

Call 0121 775 0101 to provide your investment criteria for alerts.



SCAN TO VIEW OUR WEEKLY FILMS & SUBSCRIBE

Sneak Peeks

Every week, we unveil "Sneak Peeks," a feature showcasing exclusive properties before they hit Rightmove and other platforms.

The Landlord Club

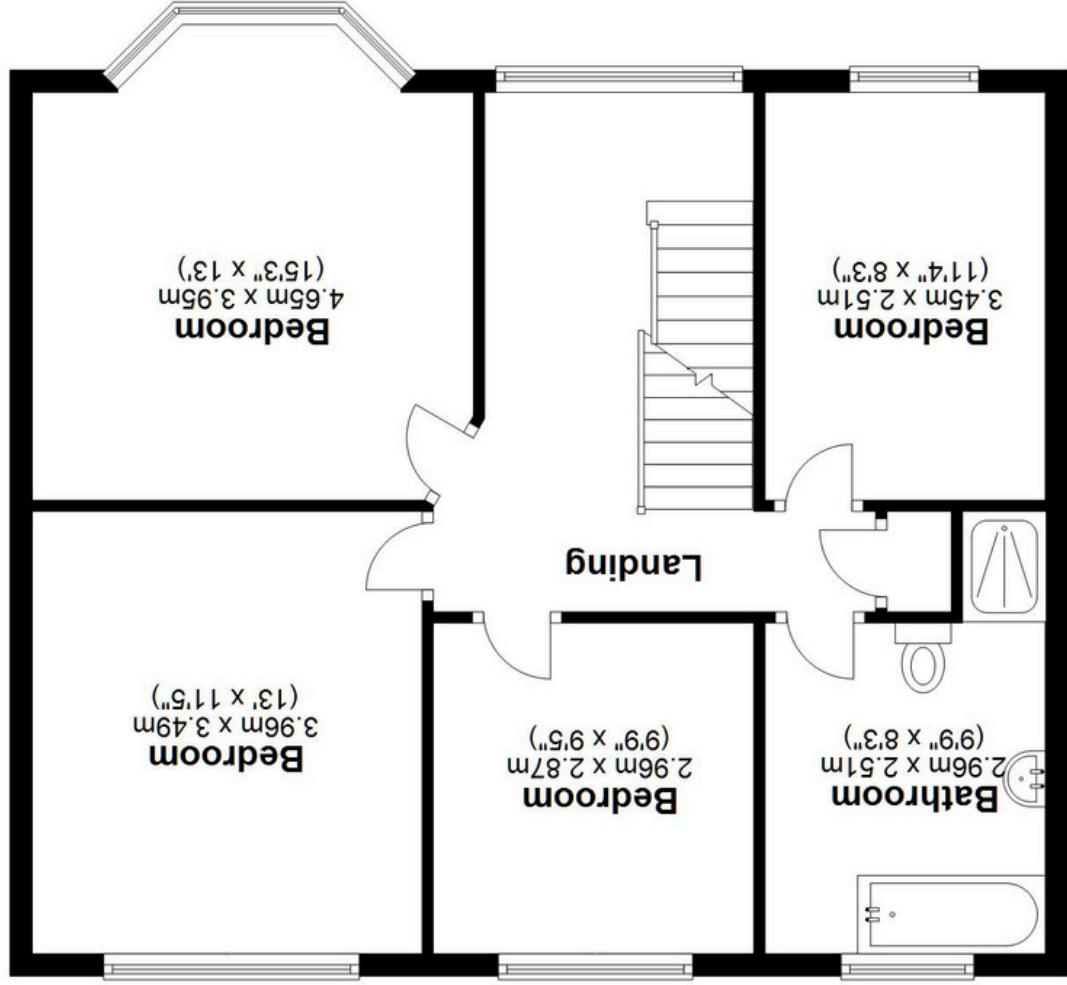
Join our Landlord Club for weekly updates on legislation, market trends, and our Letting Director's 'Investment Pick of the Week' for optimal ROI.

HTSPMD

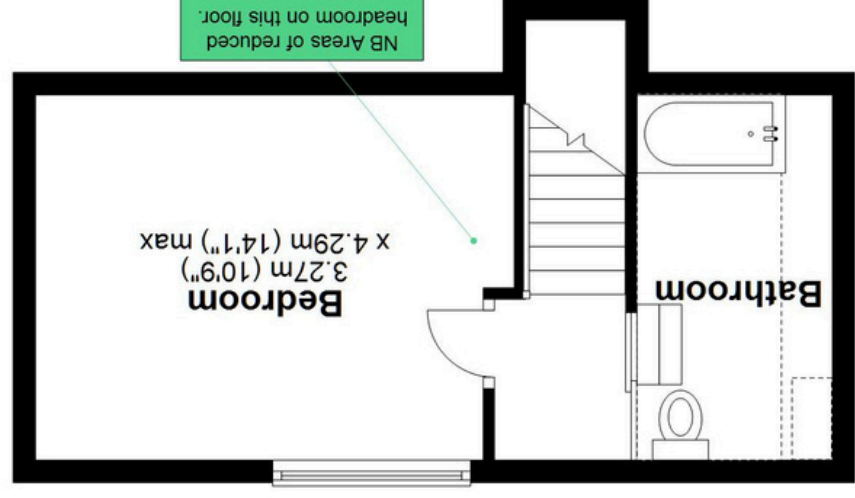
Tune into 'How's The Solihull Property Market Dom' weekly for a quick, insightful snapshot of the market.

The Mortgage Update

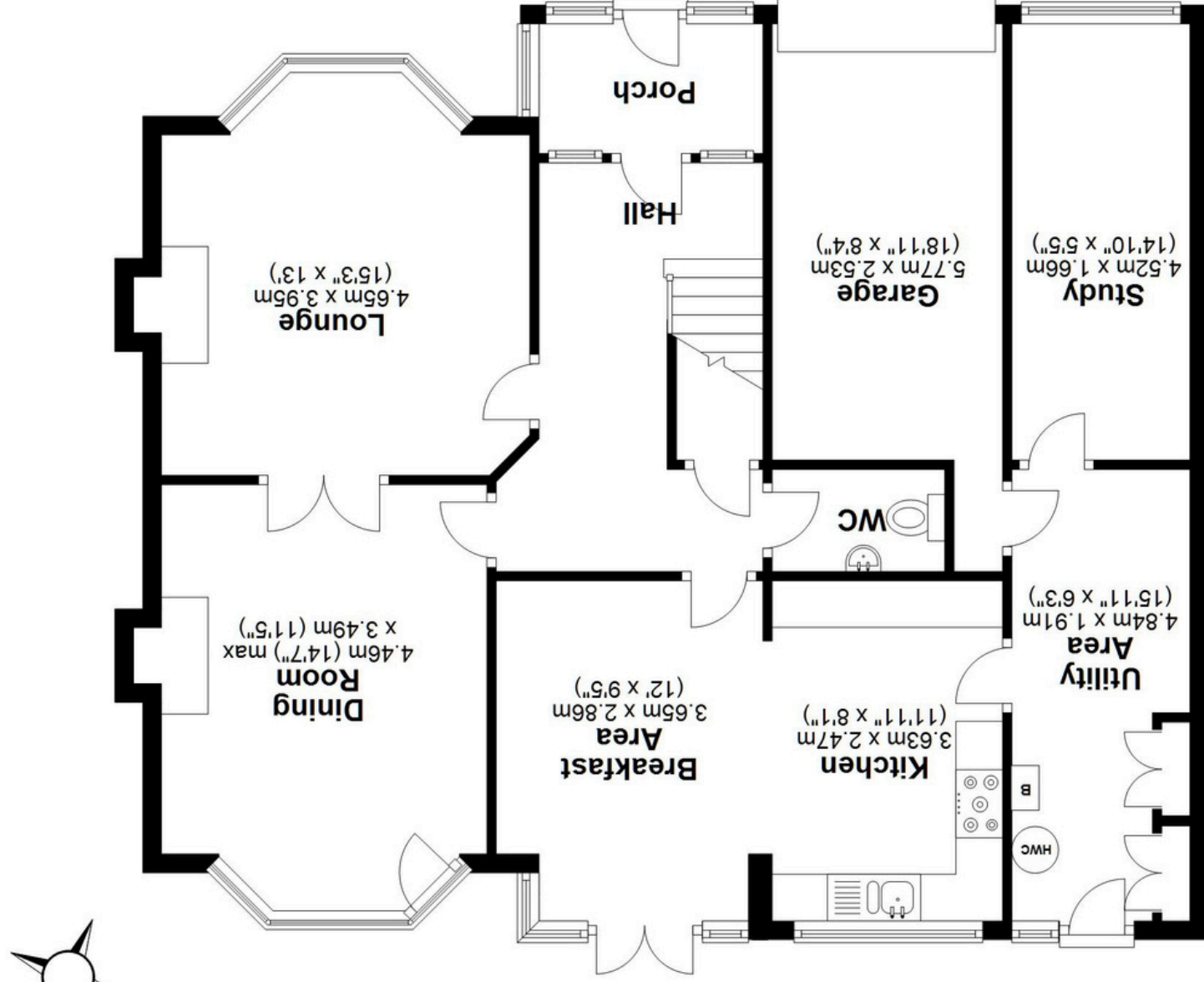
Get weekly insights and the best deals with our Mortgage Update, your shortcut to navigating the complex mortgage landscape confidently.



Approx. 69.8 sq. metres (751.8 sq. feet)



Approx. 24.0 sq. metres (257.8 sq. feet)



Approx. 97.4 sq. metres (1048.4 sq. feet)



Total area: approx. 191.2 sq. metres (2058.0 sq. feet)

This floor plan is for illustration purposes only, this is not intended to be a measured/scaled survey or comply with RICS guidelines. All measurements (including total floor area) openings orientation and floor area are approximate. No details are guaranteed, they cannot be relied upon for any purpose and do not form part of any agreement. A party must rely upon its own inspection (s). No responsibility is taken for any error, omission, or mis-statement.
Plan produced using PlanUp.