

Need a Mortgage in principle to make offers? Call us now for quick assistance!  
0121 775 0101



Do you need to sell? Start your journey now! Call us we can help.  
0121 775 0101



**SCAN FOR MORE INFO**  
**SIZE** - 2846 Sq Ft  
**TENURE** - Freehold  
**COUNCIL TAX** - Solihull MBC - F  
**BROADBAND** - Upload Max 1000 Mbps  
Download Max 1000 Mbps  
**MOBILE** - EE Three O2 Vodafone  
**EPC** - C - 71  
**PARKING** - For at least 4 Cars  
**FLOODRISK** - Very Low  
**SERVICES** - Mains  
**COVENANTS** - N/A

## YEWHRUST ROAD

Offers in excess of £900,000

Welcome to this stunning detached house located on Yewhurst Road. The property boasts 2 reception rooms, perfect for entertaining guests or simply relaxing with your loved ones. With 5 spacious bedrooms, there is plenty of room for the whole family to spread out and make themselves at home. Spanning an impressive 2,846 sq ft, this home offers ample space for comfortable living.

### FEATURES

- Beautifully Presented and Extended Detached Property
- Spacious Accommodation
- Two Reception Rooms
- Large Kitchen/Diner/Family Room
- Utility Room
- Five Double Bedrooms
- Three Bathrooms
- Ample Driveway Parking with Single Garage
- Stunning Rear Garden
- Excellent Location

Are you an investor interested in expanding your portfolio?

Call 0121 775 0101 to provide your investment criteria for alerts.



SCAN TO VIEW OUR WEEKLY FILMS & SUBSCRIBE

### Sneak Peeks

Every week, we unveil "Sneak Peeks," a feature showcasing exclusive properties before they hit Rightmove and other platforms.

### The Landlord Club

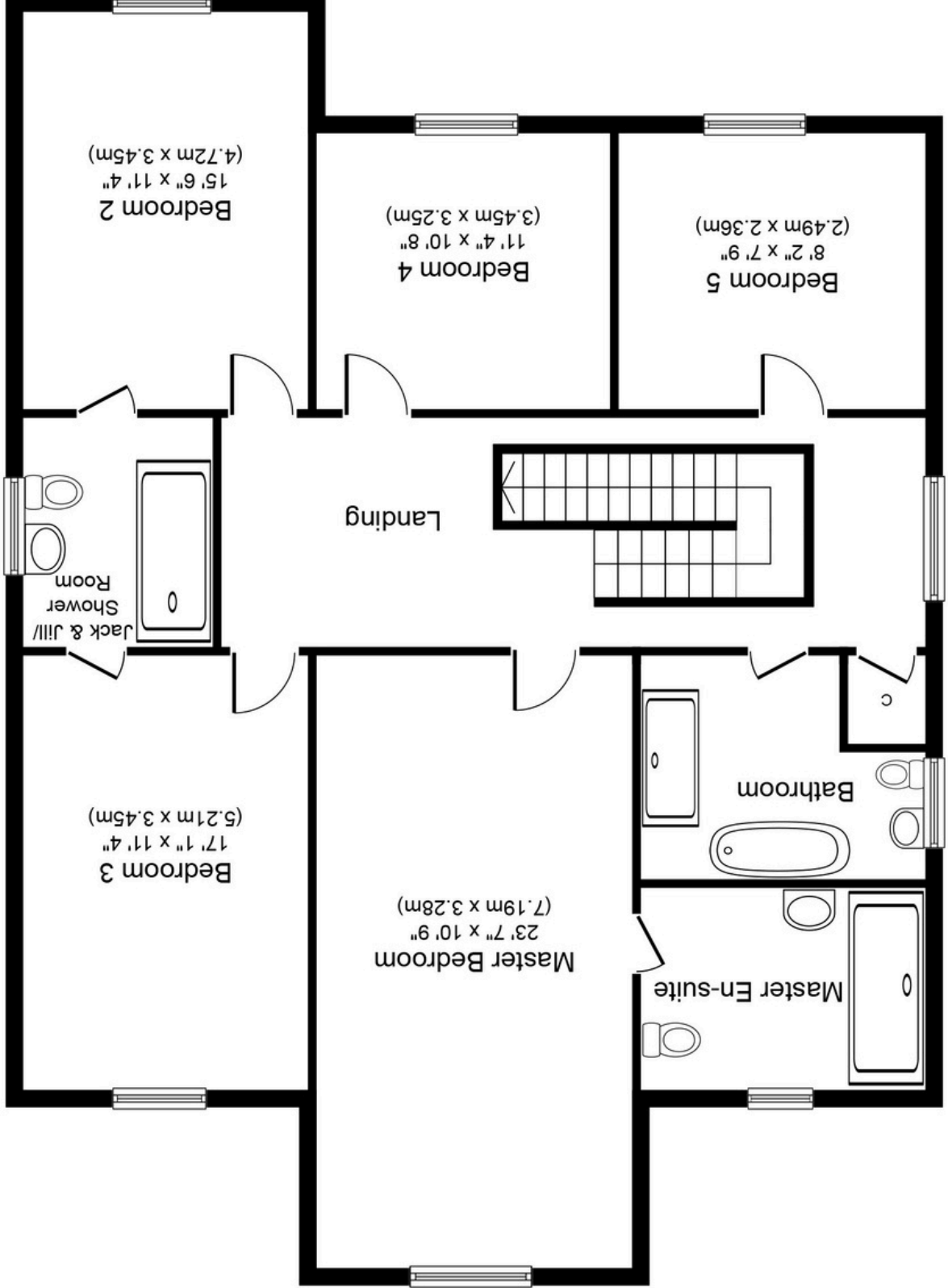
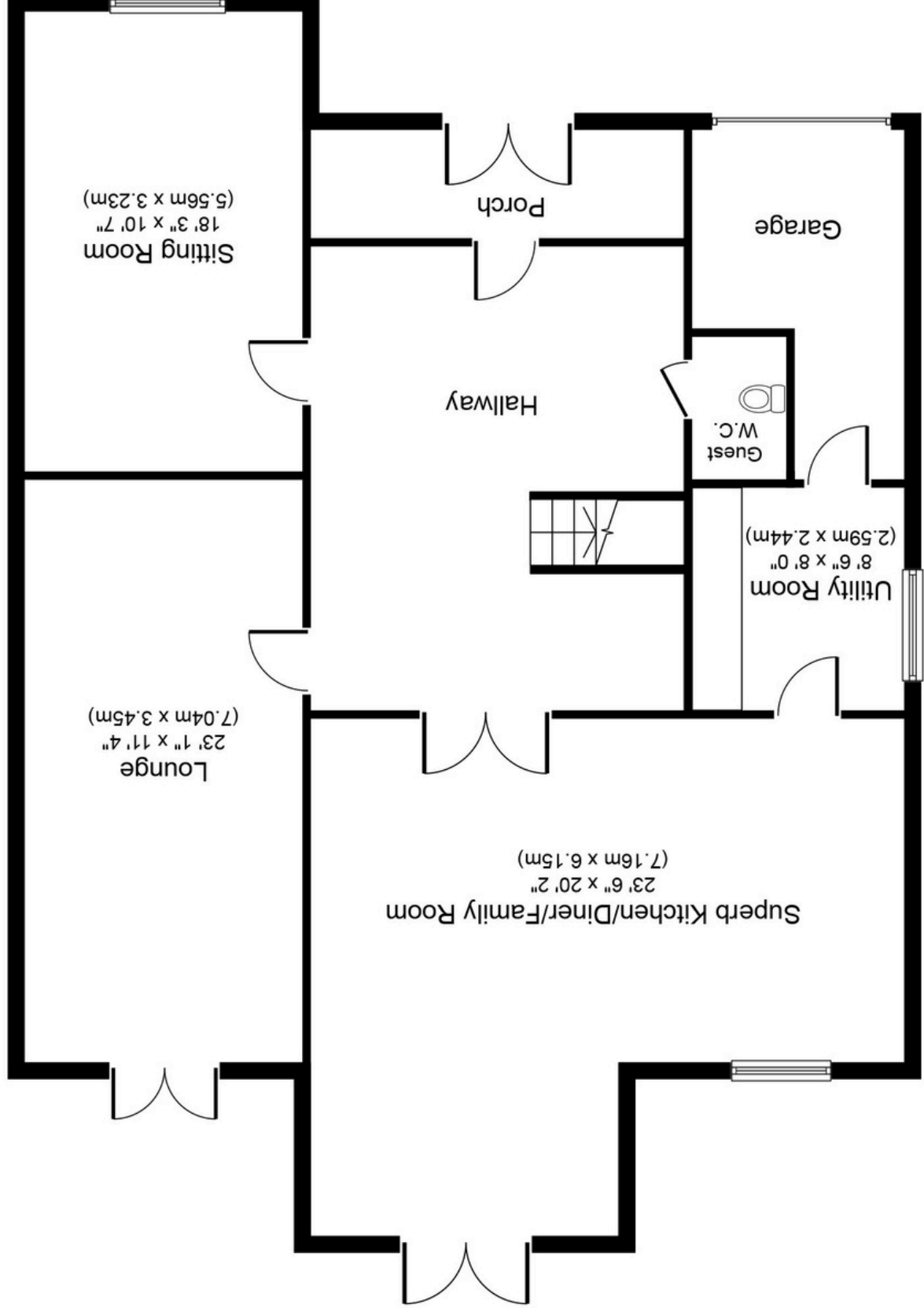
Join our Landlord Club for weekly updates on legislation, market trends, and our Letting Director's 'Investment Pick of the Week' for optimal ROI.

### HTSPMD

Tune into 'How's The Solihull Property Market Dom' weekly for a quick, insightful snapshot of the market.

### The Mortgage Update

Get weekly insights and the best deals with our Mortgage Update, your shortcut to navigating the complex mortgage landscape confidently.



Whilst every attempt has been made to ensure the accuracy of the floor plan contained here, measurements of doors, windows, rooms and any other items are approximate and no responsibility is taken for any error, omission, or mis-statement. The measurements should not be relied upon for valuation, transaction and/or funding purposes. This plan is for illustrative purposes only and should be used as such by any prospective purchaser or tenant. The services, systems and appliances shown have not been tested and no guarantee as to their operability or efficiency can be given.