

Need a Mortgage in principle to make offers? Call us now for quick assistance!
0121 775 0101



Do you need to sell? Start your journey now! Call us we can help.
0121 775 0101



MIDDLEWOOD CLOSE

Asking Price £375,000

Welcome to this charming terraced house located in the desirable Middlewood Close, Solihull. Located over three floors, it offers ample space for a growing family wishing to upsize. Offered with no upward chain.

FEATURES

- Beautifully Presented Terraced Property
- Refurbished Throughout
- Lounge with Bay Window
- Modern Kitchen/Dining Room
- Three First Floor Bedrooms
- Family Bathroom
- Principal Bedroom on the Second Floor with En-Suite
- Useful Eaves Storage Space
- Low Maintenance Rear Garden
- Two Parking Spaces



SCAN FOR MORE INFO

SIZE - 1176 Sq Ft
TENURE - Freehold
COUNCIL TAX - Solihull MBC - D
BROADBAND - Upload Max 1000 Mbps
Download Max 1000 Mbps
MOBILE - O2 Vodafone
EPC - C - 76
PARKING - 2 Parking Spaces
FLOODRISK - Very Low
SERVICES - Mains
COVENANTS - N/A

Are you an investor interested in expanding your portfolio?

Call 0121 775 0101 to provide your investment criteria for alerts.



SCAN TO VIEW OUR WEEKLY FILMS & SUBSCRIBE

Sneak Peeks

Every week, we unveil "Sneak Peeks," a feature showcasing exclusive properties before they hit Rightmove and other platforms.

The Landlord Club

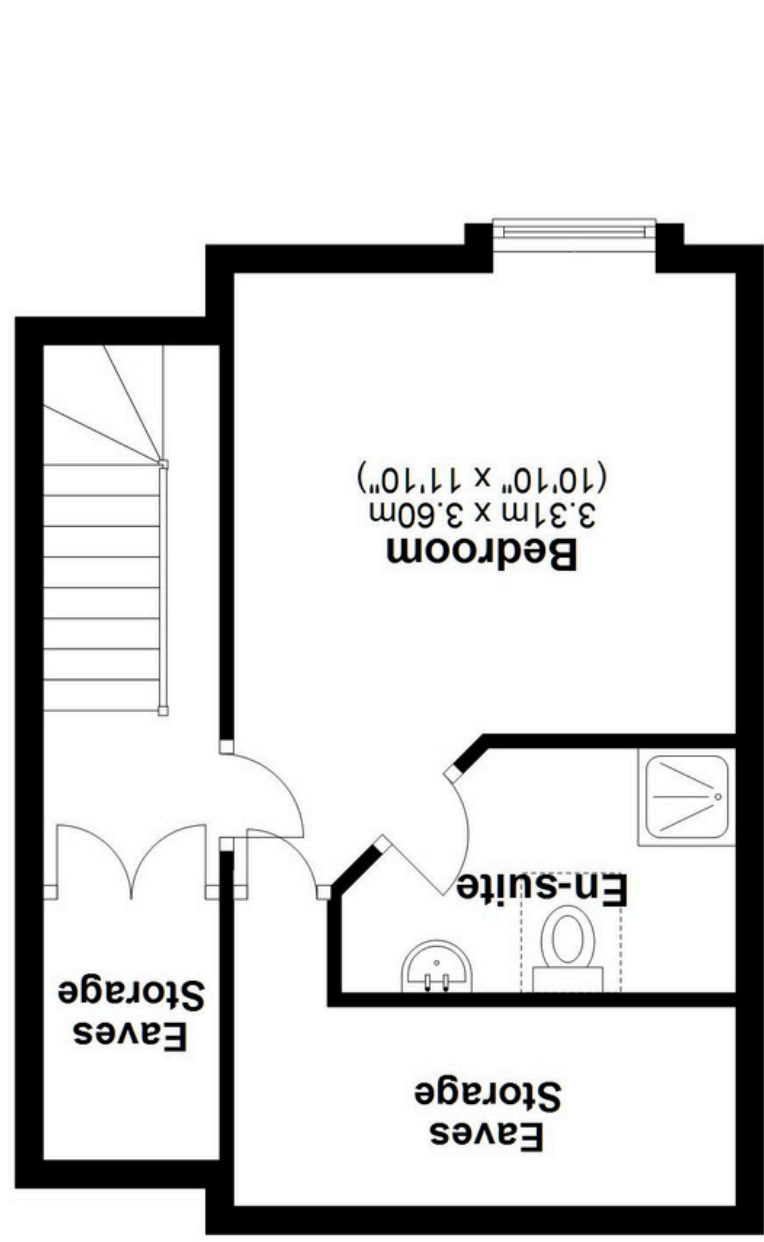
Join our Landlord Club for weekly updates on legislation, market trends, and our Letting Director's 'Investment Pick of the Week' for optimal ROI.

HTSPMD

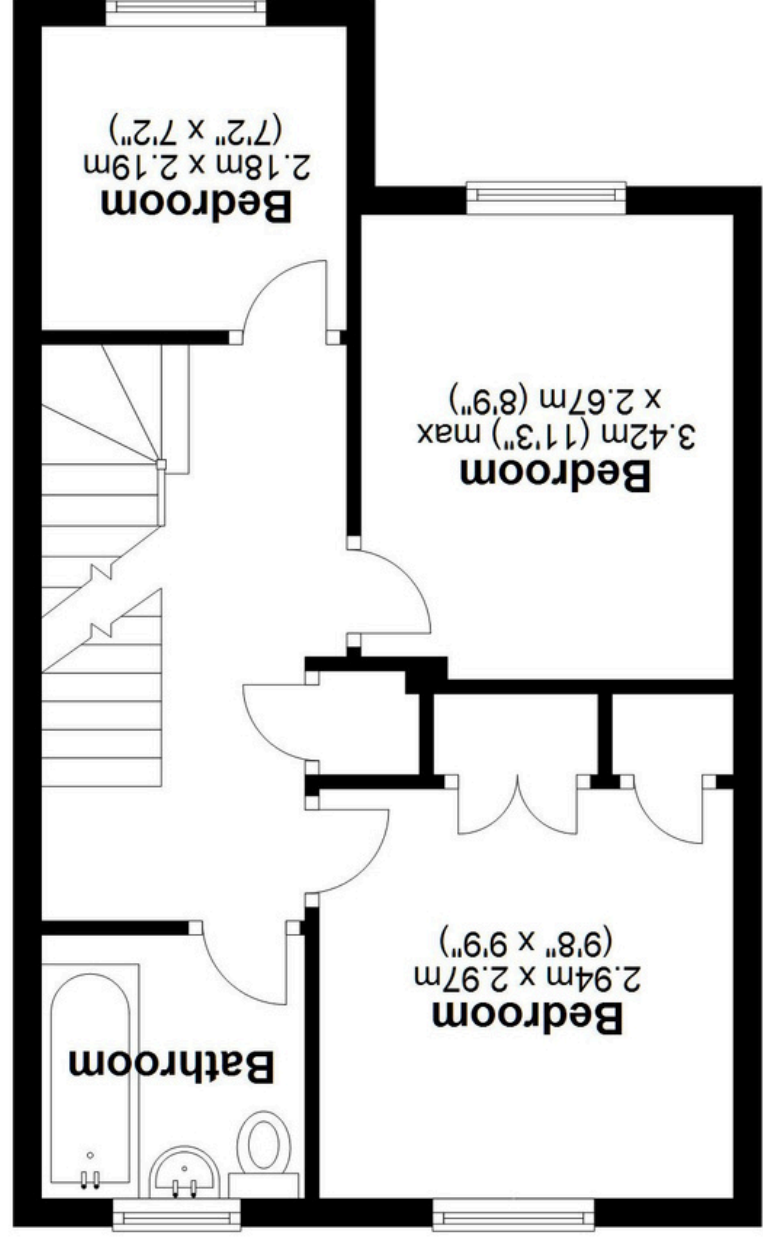
Tune into 'How's The Solihull Property Market Dom' weekly for a quick, insightful snapshot of the market.

The Mortgage Update

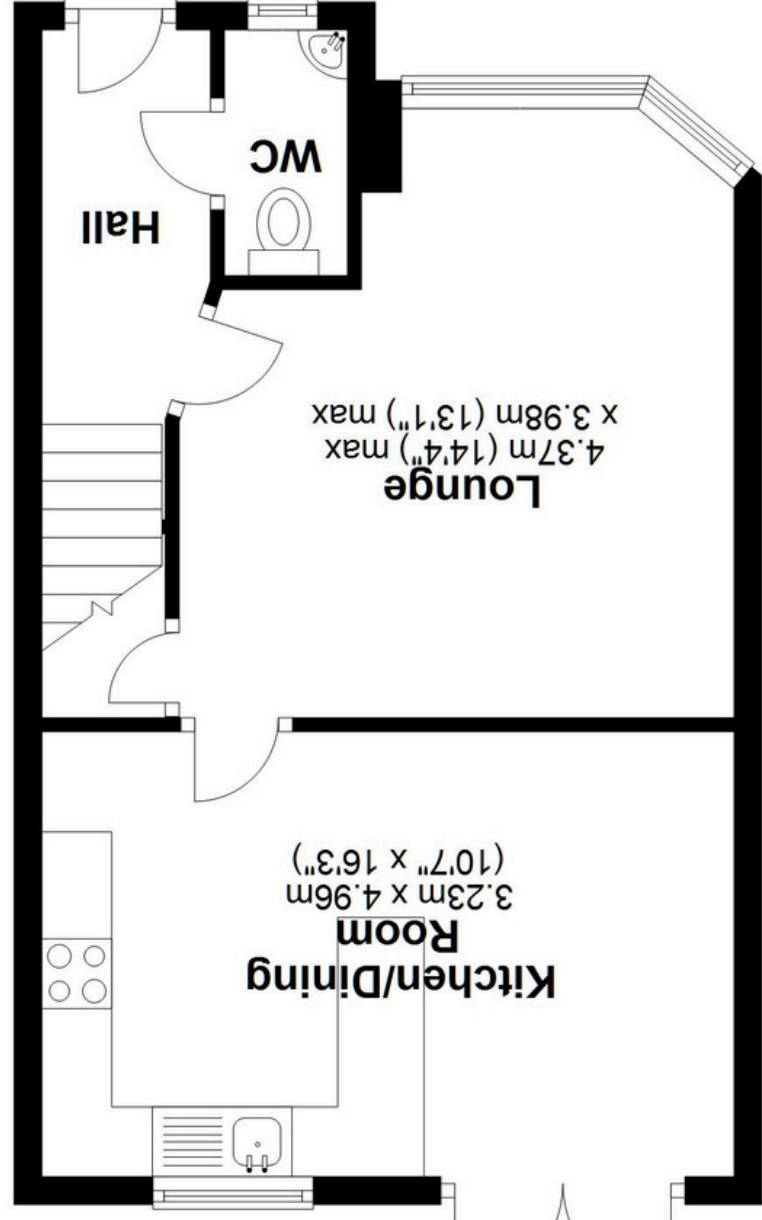
Get weekly insights and the best deals with our Mortgage Update, your shortcut to navigating the complex mortgage landscape confidently.



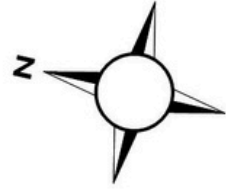
Second Floor
 Approx. 32.2 sq. metres (346.9 sq. feet)



First Floor
 Approx. 38.1 sq. metres (410.0 sq. feet)



Ground Floor
 Approx. 39.0 sq. metres (419.5 sq. feet)



Total area: approx. 109.3 sq. metres (1176.4 sq. feet)

This floor plan is for illustration purposes only, this is not intended to be a measured/scaled survey or comply with RICS guidelines. All measurements (including total floor area) openings, orientation and floor area are approximate. No details are guaranteed, they cannot be relied upon for any purpose and do not form part of any agreement. A party must rely upon its own inspection(s). No responsibility is taken for any error, omission, or mis-statement.
 Plan produced using PlanUp.