

Need a Mortgage in principle to make offers? Call us now for quick assistance!
0121 775 0101



Do you need to sell? Start your journey now! Call us we can help.
0121 775 0101



SHEPHERD ROAD

Guide Price £400,000



SCAN FOR MORE INFO

SIZE - 1726 Sq Ft
TENURE - Freehold
COUNCIL TAX - B'ham City Council - C
BROADBAND - Upload Max 1000 Mbps
Download Max 1000 Mbps
MOBILE - EE Three O2 Vodafone
EPC - C - 75
PARKING - For 1 Car
FLOODRISK - Very Low
SERVICES - Mains
COVENANTS - N/A

This charming semi-detached house could be your next dream home! The property has been lovingly extended and presented to a high standard and specification and offers plenty of space for the whole family.

FEATURES

- Beautifully Presented Semi-Detached House
- Spacious, Extended Accommodation
- Bright Lounge with Bay Window
- Stunning Kitchen/Family/Dining Room
- Three Good Sized Bedrooms
- Four Piece Family Bathroom
- Private Landscaped Rear Garden
- Driveway Parking
- Convenient Location

Are you an investor interested in expanding your portfolio?

Call 0121 775 0101 to provide your investment criteria for alerts.



SCAN TO VIEW OUR WEEKLY FILMS & SUBSCRIBE

Sneak Peeks

Every week, we unveil "Sneak Peeks," a feature showcasing exclusive properties before they hit Rightmove and other platforms.

The Landlord Club

Join our Landlord Club for weekly updates on legislation, market trends, and our Letting Director's 'Investment Pick of the Week' for optimal ROI.

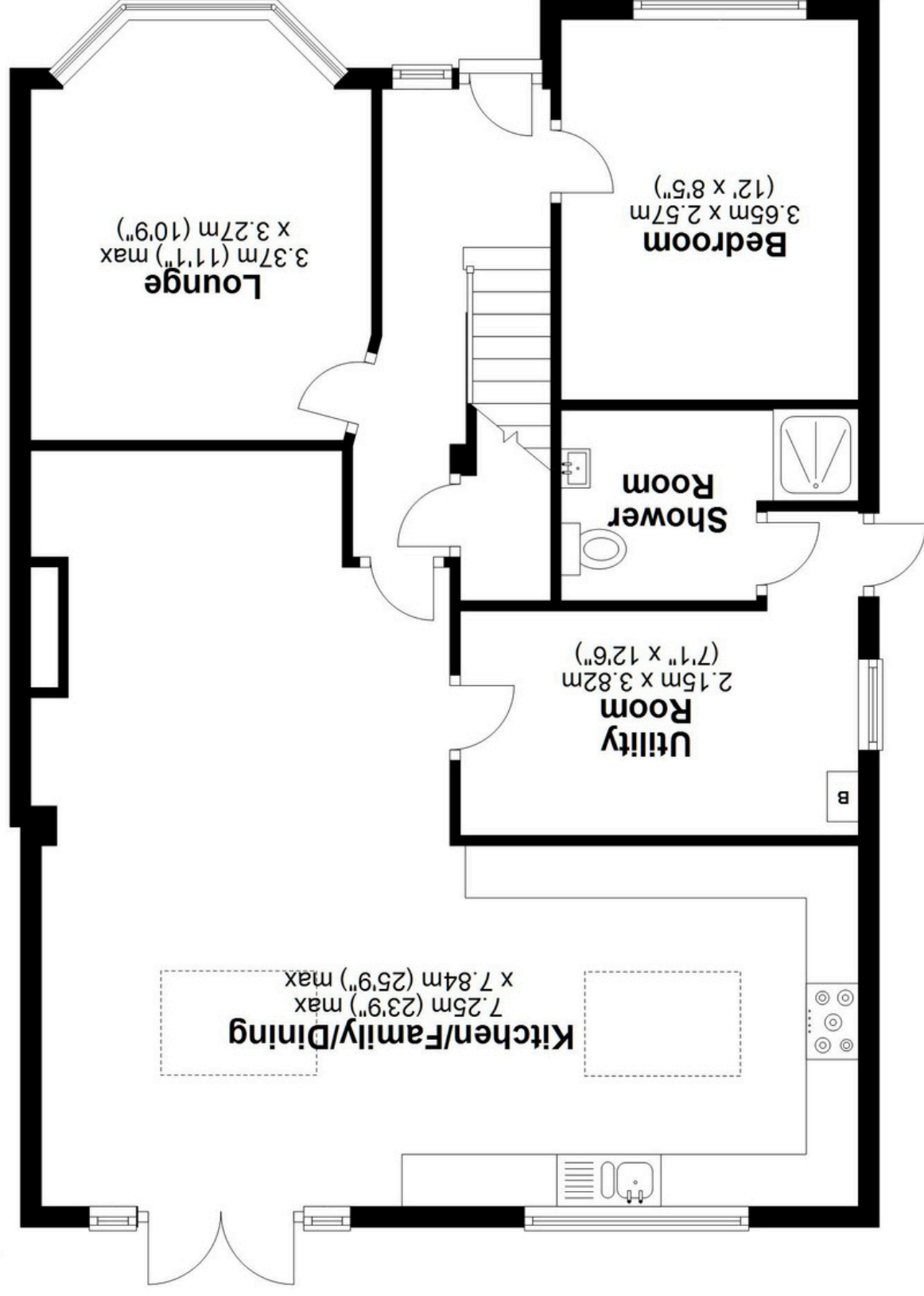
HTSPMD

Tune into 'How's The Solihull Property Market Dom' weekly for a quick, insightful snapshot of the market.

The Mortgage Update

Get weekly insights and the best deals with our Mortgage Update, your shortcut to navigating the complex mortgage landscape confidently.

Ground Floor
Approx. 86.0 sq. metres (926.1 sq. feet)



Total area: approx. 140.2 sq. metres (1509.0 sq. feet)

This floor plan is for illustration purposes only, this is not intended to be a measured/scaled survey or comply with RICS guidelines. All measurements (including total floor area) openings, orientation and floor area are approximate. No details are guaranteed, they cannot be relied upon for any purpose and do not form part of any agreement. A party must rely upon its own inspection(s). No responsibility is taken for any error, omission, or mis-statement.

Plan produced using PlanUp.

First Floor
Approx. 54.2 sq. metres (583.0 sq. feet)

