

Need a Mortgage in principle  
to make offers? Call us now  
for quick assistance!  
**0121 775 0101**



Do you need to sell?  
Start your journey now!  
Call us we can help.  
**0121 775 0101**



## CHATTOCK AVENUE

Offers in Excess of £700,000



### SCAN FOR MORE INFO

**SIZE** - 1364 Sq Ft  
**TENURE** - Freehold  
**COUNCIL TAX** - Solihull MBC - G  
**BROADBAND** - Upload Max 1GBps  
Download Max 1GBps  
**MOBILE** - O2 Vodaphone  
**EPC** - C - 73  
**PARKING** - For at least 2 Cars  
**FLOODRISK** - Very Low  
**SERVICES** - Mains  
**COVENANTS** - N/A

Are you an investor  
interested in expanding your  
portfolio?

Call **0121 775 0101** to provide your  
investment criteria for alerts.

Welcome to Chattock Avenue, Solihull - a stunning property that offers the perfect blend of space, comfort, and style. This detached house boasts 2 reception rooms, providing ample space for entertaining guests or simply relaxing with your loved ones. With 4 bedrooms and 2 bathrooms, there is plenty of room for the whole family to enjoy.

### FEATURES

- Beautifully Presented Detached Property
- Dual Aspect Lounge with Feature Log Burner
- Stunning Kitchen/Diner with Separate Utility Room
- Study
- Principal Bedroom with En-Suite Bathroom
- Three Further Bedrooms
- Family Shower Room
- Private Landscaped Rear Garden
- Driveway Parking and Detached Double Garage

### Sneak Peeks

Every week, we unveil "Sneak Peeks," a feature showcasing exclusive properties before they hit Rightmove and other platforms.

### The Landlord Club

Join our Landlord Club for weekly updates on legislation, market trends, and our Letting Director's 'Investment Pick of the Week' for optimal ROI.

### HTSPMD

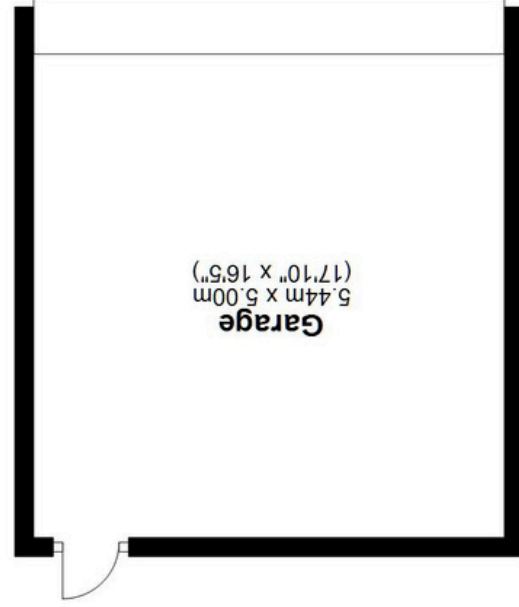
Tune into 'How's The Solihull Property Market Dom' weekly for a quick, insightful snapshot of the market.

### The Mortgage Update

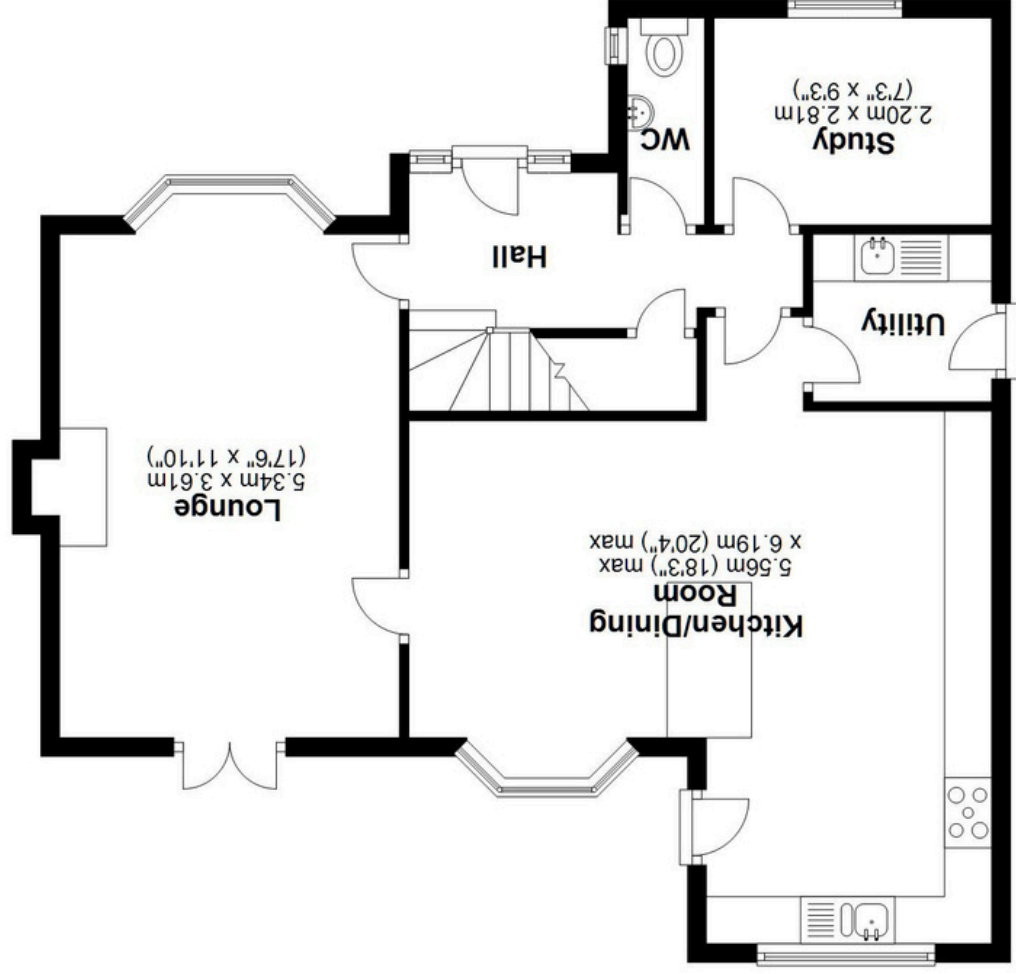
Get weekly insights and the best deals with our Mortgage Update, your shortcut to navigating the complex mortgage landscape confidently.



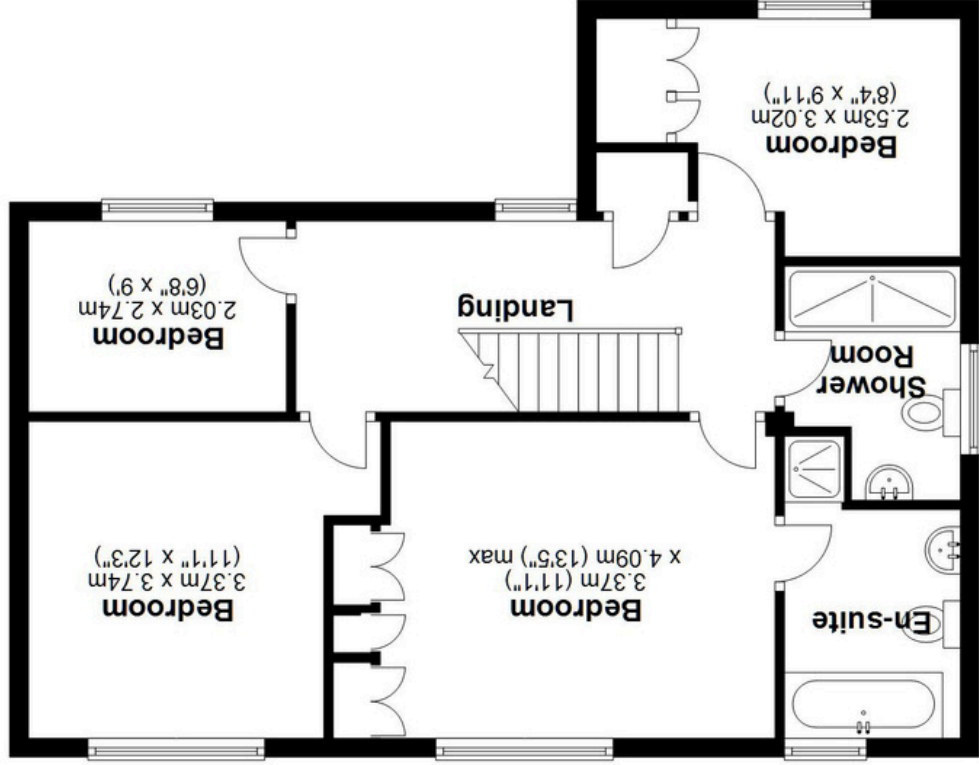
SCAN TO VIEW OUR  
WEEKLY FILMS &  
SUBSCRIBE



**Ground Floor**  
Main area: approx. 63.8 sq. metres (686.6 sq. feet)  
Plus garages, approx. 27.2 sq. metres (292.6 sq. feet)



**First Floor**  
Approx. 63.0 sq. metres (677.6 sq. feet)



**Main area: Approx. 126.7 sq. metres (1364.2 sq. feet)**  
Plus garages, approx. 27.2 sq. metres (292.8 sq. feet)

This floor plan is for illustration purposes only, this is not intended to be a measured/scaled survey or comply with RICS guidelines. All measurements (including total floor area) openings, orientation and floor area are approximate. No details are guaranteed, they cannot be relied upon for any purpose and do not form part of any agreement. A party must rely upon its own inspection(s). No responsibility is taken for any error, omission, or mis-statement. Plan produced using PlanUp.