

Need a Mortgage in principle to make offers? Call us now for quick assistance!
0121 775 0101



Do you need to sell? Start your journey now! Call us we can help.
0121 775 0101



SCAN FOR MORE INFO
SIZE - 3445sq Ft
TENURE - Freehold
COUNCIL TAX - Solihull MBC - G
BROADBAND - Upload Max 1000 Mbps
Download Max 1000 Mbps
MOBILE - Vodaphone
EPC - D - 60
PARKING - For Multiple Vehicles
FLOODRISK - Very Low
SERVICES - Mains
COVENANTS - N/A

BEAUMONT GROVE

Offers in the EXCESS of £900,000

Nestled in a sought-after Solihull cul-de-sac, this delightful five-bedroom detached dormer bungalow promises a wonderful family haven. Featuring generously proportioned rooms and a private garden, it's a blend of comfort and convenience, just moments from Solihull Train Station and central amenities. This property is offered with no upward chain.

FEATURES

- Spacious Detached Bungalow
- 2 Reception Rooms
- Well Appointed Kitchen with Utility Area
- Ground Floor Principal Bedroom with En-Suite Wet Room
- Two Further Ground Floor Bedrooms
- Ground Floor En-Suite & Family Bathroom
- Two Large First Floor Bedrooms
- Re-Fitted Family Bathroom to the First Floor
- Private Rear Garden & In/Out Driveway
- Situated Close to Solihull Town Centre & Train Station
- 3445 Sq.Ft Accommodation
- No Upward Chain

Are you an investor interested in expanding your portfolio?

Call 0121 775 0101 to provide your investment criteria for alerts.



SCAN TO VIEW OUR WEEKLY FILMS & SUBSCRIBE

Sneak Peeks

Every week, we unveil "Sneak Peeks," a feature showcasing exclusive properties before they hit Rightmove and other platforms.

The Landlord Club

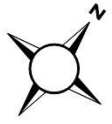
Join our Landlord Club for weekly updates on legislation, market trends, and our Letting Director's 'Investment Pick of the Week' for optimal ROI.

HTSPMD

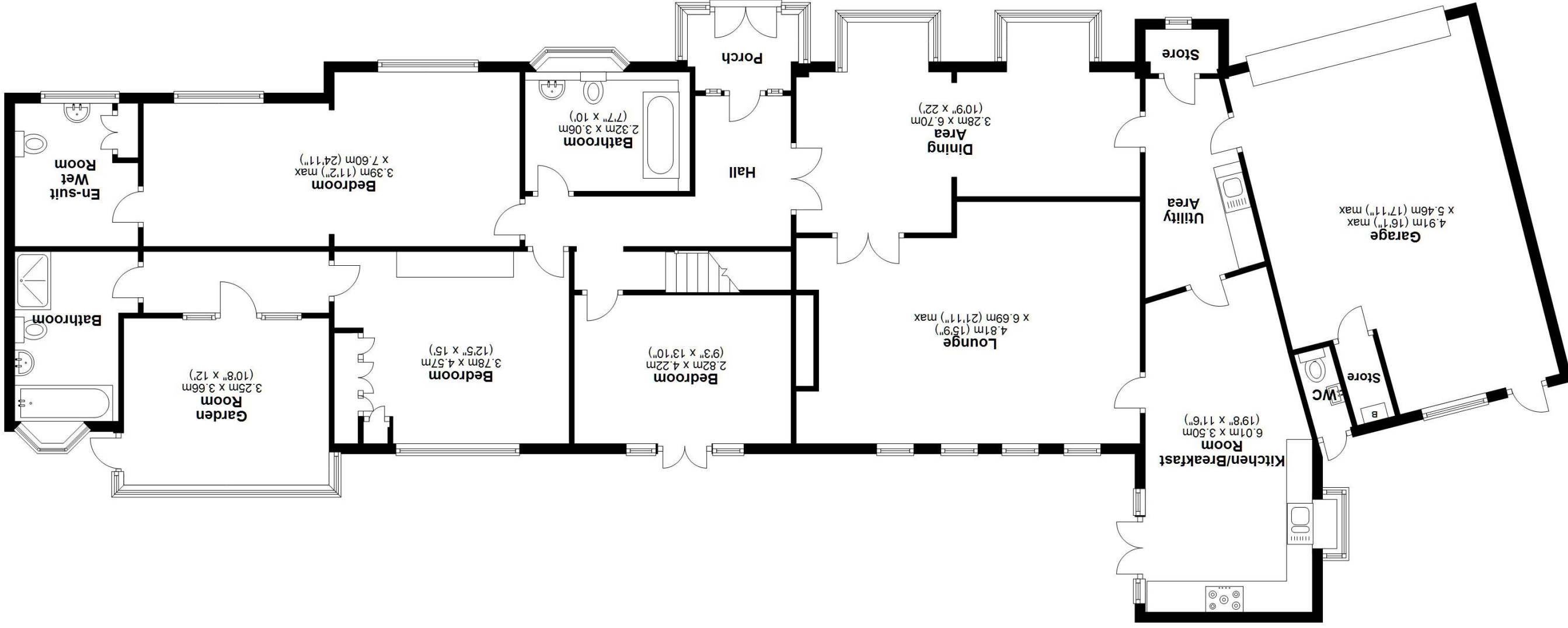
Tune into 'How's The Solihull Property Market Dom' weekly for a quick, insightful snapshot of the market.

The Mortgage Update

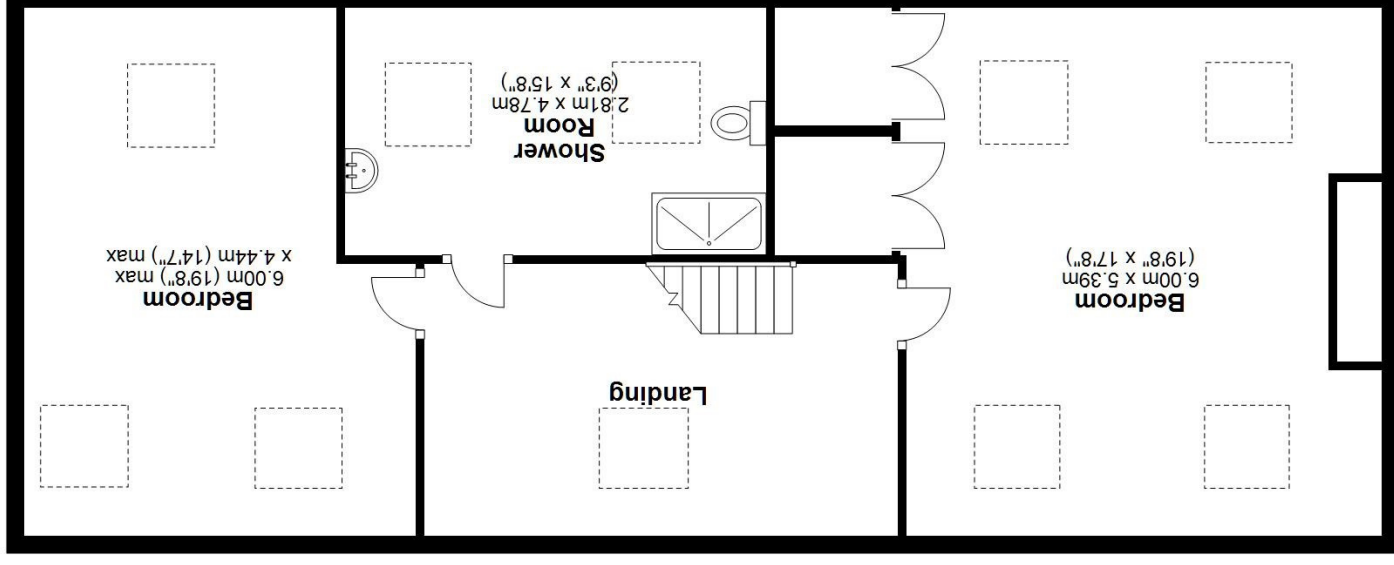
Get weekly insights and the best deals with our Mortgage Update, your shortcut to navigating the complex mortgage landscape confidently.



Ground Floor
Approx. 227.6 sq. metres (2450.4 sq. feet)



First Floor
Approx. 92.4 sq. metres (994.9 sq. feet)



Total area: approx. 320.1 sq. metres (3445.3 sq. feet)

This floor plan is for illustration purposes only, this is not intended to be a measured/scaled survey or comply with RICS guidelines. All measurements (including total floor area) openings, orientation and floor area are approximate. No details are guaranteed, they cannot be relied upon for any purpose and do not form part of any agreement. A party must rely upon its own inspection(s). No responsibility is taken for any error, omission, or mis-statement.
Plan produced using Planlup.