

Need a Mortgage in principle to make offers? Call us now for quick assistance!
0121 775 0101



Do you need to sell? Start your journey now! Call us we can help.
0121 775 0101



SCAN FOR MORE INFO
SIZE - 1360 Sq Ft
TENURE - Freehold
COUNCIL TAX - Solihull MBC - D
BROADBAND - Upload Max 1000 Mbps
Download Max 1000 Mbps
MOBILE - O2 Vodaphone
EPC - D - 61
PARKING - For at least 4 Cars
FLOODRISK - Very Low
SERVICES - Mains
COVENANTS - N/A

WAGON LANE

Offers over of £400,000

A beautifully presented four bedroom semi-detached home which is ready to move into. The extended property offers versatile accommodation for a family looking to upsize and take advantage of good local schools. It is ideally placed for commuter links on the Coventry Road, Olton and Solihull town centres, Lyndon playing fields and Birmingham International Airport. Viewings are highly recommended.

FEATURES

- Extended Property Set on a Corner Plot
- Tastefully Presented Throughout
- Lounge with Bay Window
- Extended Kitchen/Dining Room
- Utility Room
- Three Good Sized Double Bedrooms and Fourth Single
- Modern Four Piece Family Bathroom
- Blocked Paved Driveway for Up to Four Vehicles
- Landscaped Rear Garden
- Conveniently Located for Local Amenities

Are you an investor interested in expanding your portfolio?

Call 0121 775 0101 to provide your investment criteria for alerts.



SCAN TO VIEW OUR WEEKLY FILMS & SUBSCRIBE

Sneak Peeks

Every week, we unveil "Sneak Peeks," a feature showcasing exclusive properties before they hit Rightmove and other platforms.

The Landlord Club

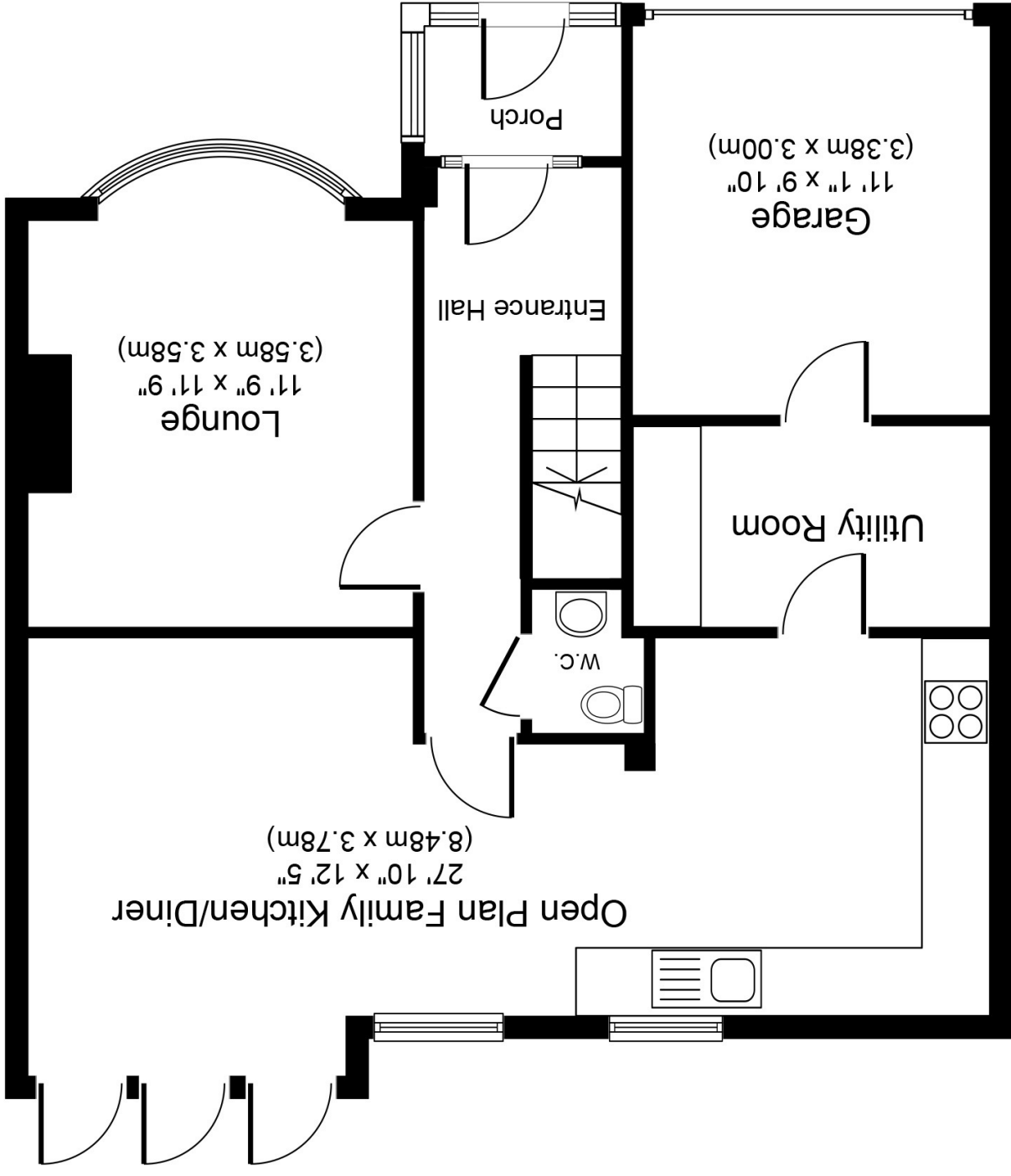
Join our Landlord Club for weekly updates on legislation, market trends, and our Letting Director's 'Investment Pick of the Week' for optimal ROI.

HTSPMD

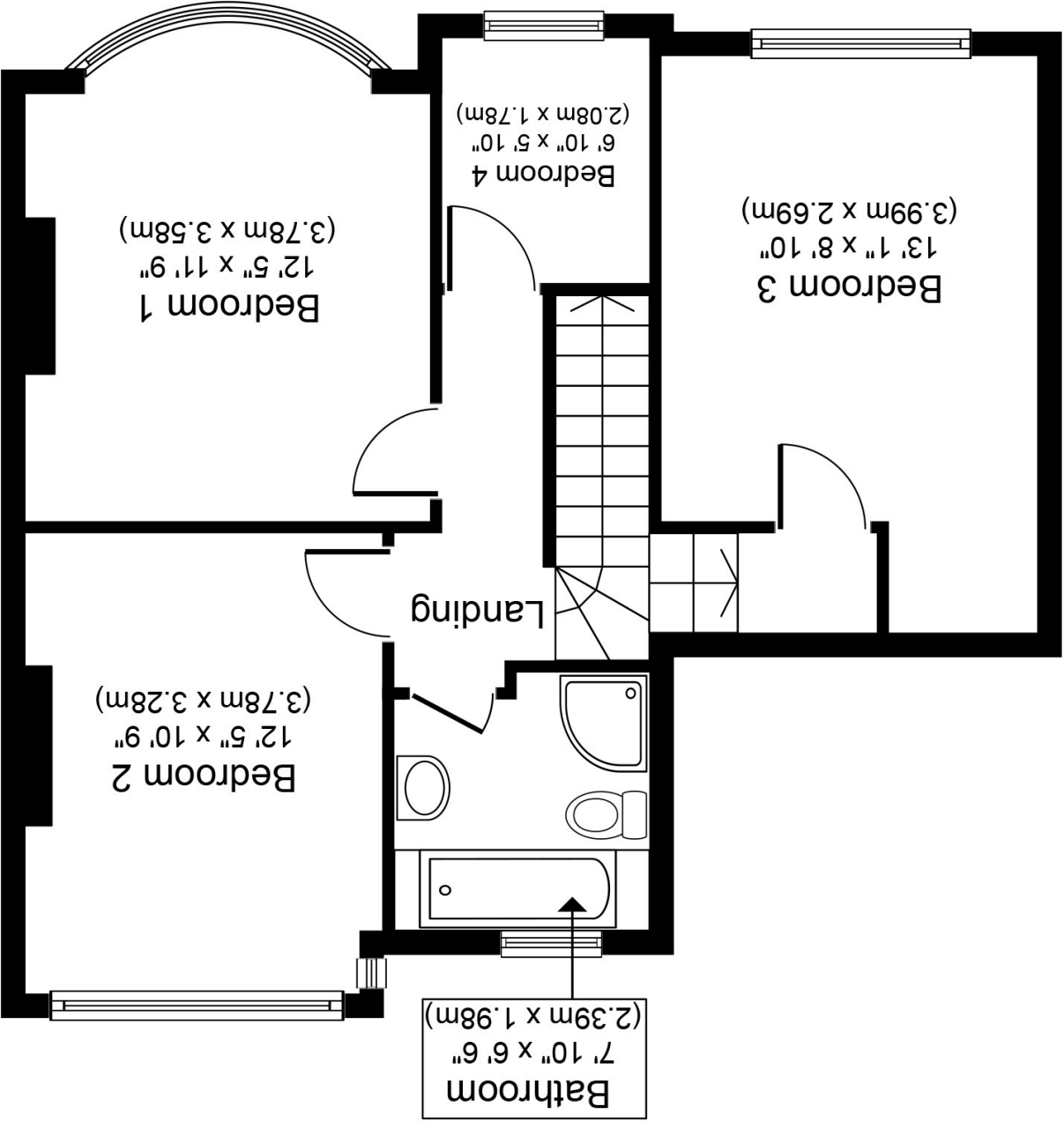
Tune into 'How's The Solihull Property Market Dom' weekly for a quick, insightful snapshot of the market.

The Mortgage Update

Get weekly insights and the best deals with our Mortgage Update, your shortcut to navigating the complex mortgage landscape confidently.



Ground Floor
Approximate Floor Area
759 sq. ft.
(70.5 sq. m.)



First Floor
Approximate Floor Area
601 sq. ft.
(55.8 sq. m.)

Whilst every attempt has been made to ensure the accuracy of the floor plan contained here, measurements of doors, windows, rooms and any other items are approximate and no responsibility is taken for any error, omission, or mis-statement. The measurements should not be relied upon for valuation, transaction and/or funding purposes. This plan is for illustrative purposes only and should be used as such by any prospective purchaser or tenant. The services, systems and appliances shown have not been tested and no guarantee as to their operability or efficiency can be given.