

Need a Mortgage in principle to make offers? Call us now for quick assistance!  
0121 775 0101



Do you need to sell? Start your journey now! Call us we can help.  
0121 775 0101



## ARDEN OAK ROAD

Offers in the region of £325,000



### SCAN FOR MORE INFO

**SIZE** - 1325 Sq Ft  
**TENURE** - Freehold  
**COUNCIL TAX** - Solihull MBC - C  
**BROADBAND** - Upload Max 1000 Mbps  
 Download Max 1000 Mbps  
**MOBILE** - EE O2 Vodaphone  
**EPC** - D - 64  
**PARKING** - For 2 Cars  
**FLOODRISK** - Very Low  
**SERVICES** - Mains  
**COVENANTS** - N/A

This gorgeous family home is well maintained throughout and is conveniently located close to local amenities such as schools, shops and travel links. This property is perfect for growing families.

### FEATURES

- Beautifully Presented Throughout
- Lounge with Feature Log Burner
- Extended Dining Room
- Modern Fitted Kitchen with Useful Utility Area
- Guest Cloakroom
- Two Good Sized Double Bedrooms both with Fitted Wardrobes
- Third Single Bedroom
- Four Piece Family Bathroom
- Rear Garden with Decked Area
- Single Garage
- Two Car Driveway

Are you an investor interested in expanding your portfolio?

Call 0121 775 0101 to provide your investment criteria for alerts.



SCAN TO VIEW OUR WEEKLY FILMS & SUBSCRIBE

### Sneak Peeks

Every week, we unveil "Sneak Peeks," a feature showcasing exclusive properties before they hit Rightmove and other platforms.

### The Landlord Club

Join our Landlord Club for weekly updates on legislation, market trends, and our Letting Director's 'Investment Pick of the Week' for optimal ROI.

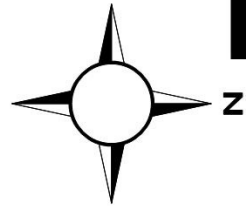
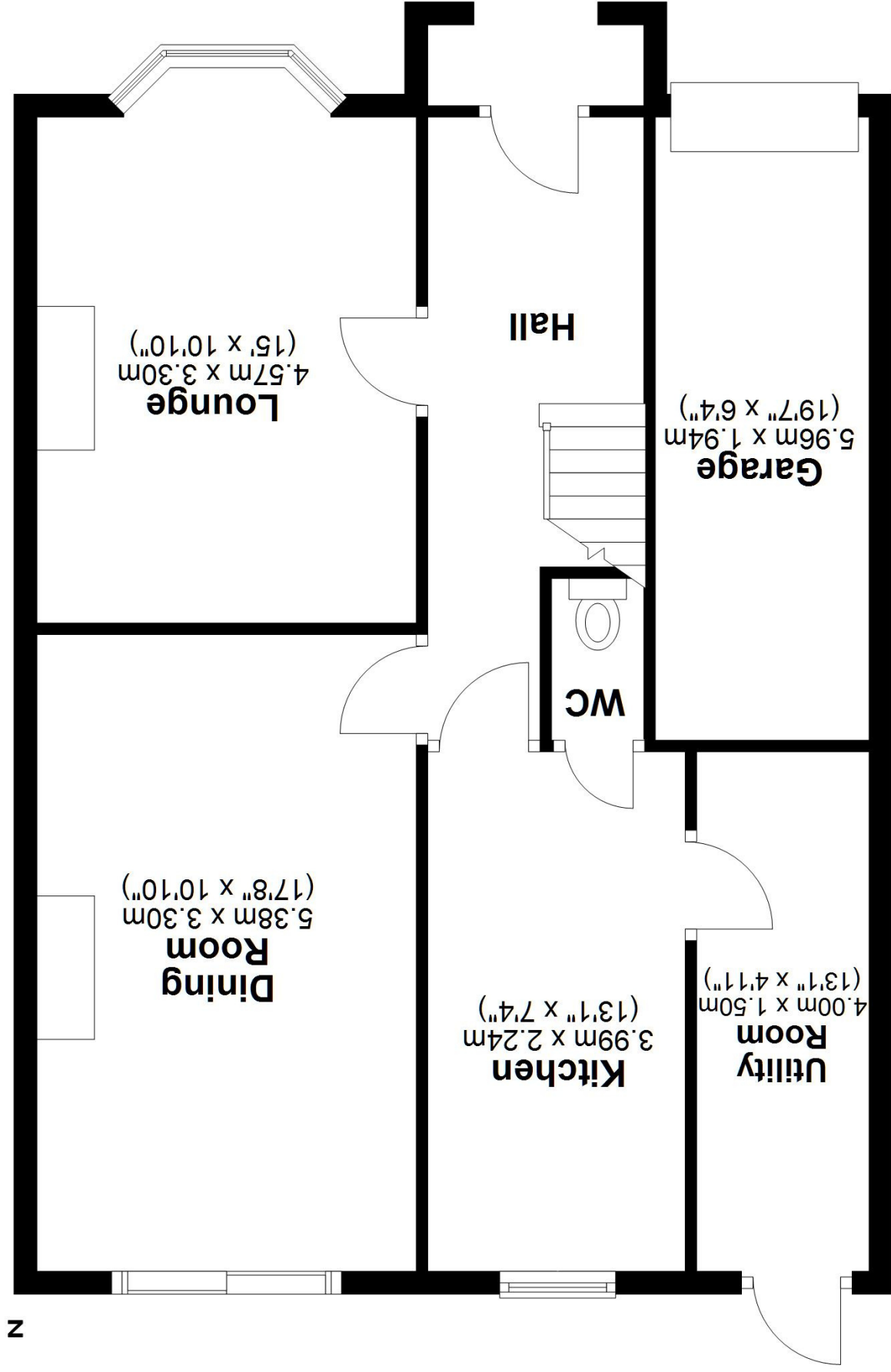
### HTSPMD

Tune into 'How's The Solihull Property Market Dom' weekly for a quick, insightful snapshot of the market.

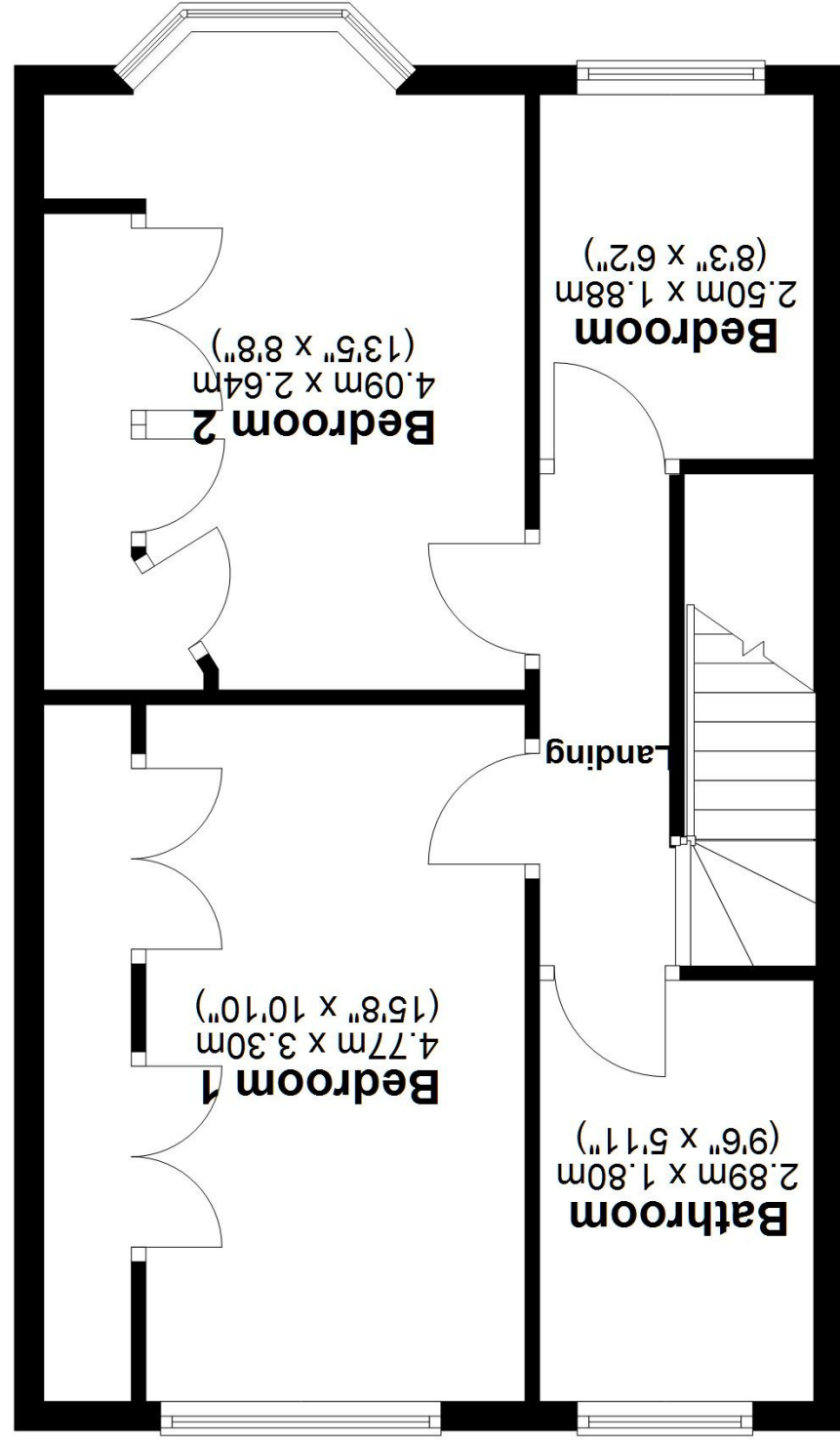
### The Mortgage Update

Get weekly insights and the best deals with our Mortgage Update, your shortcut to navigating the complex mortgage landscape confidently.

**Ground Floor**  
Approx. 73.0 sq. metres (785.8 sq. feet)



**First Floor**  
Approx. 50.1 sq. metres (539.7 sq. feet)



Total area: approx. 123.1 sq. metres (1325.5 sq. feet)